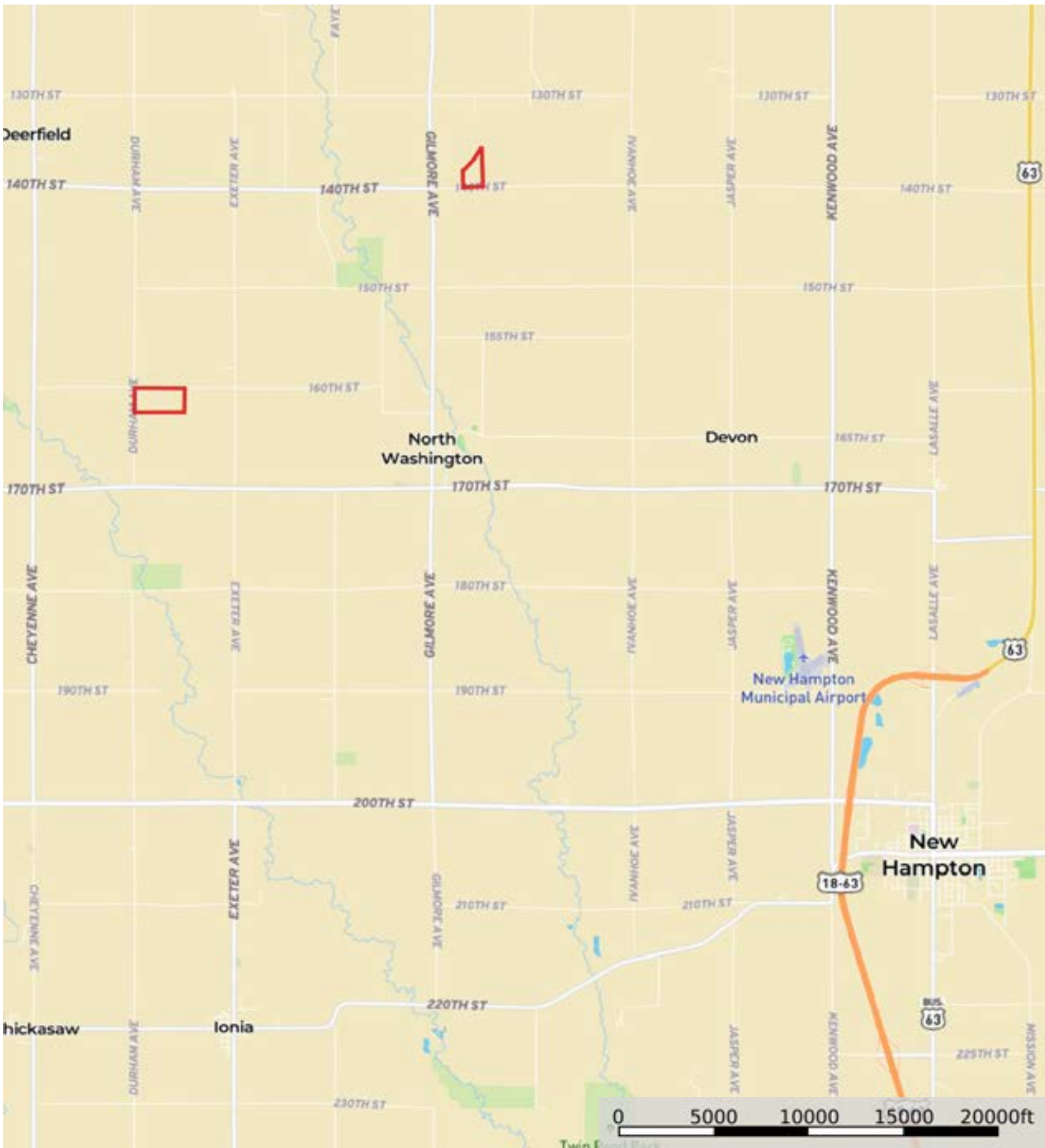



L-2300397

Chickasaw County, Iowa, 111 AC +/-



 Boundary

L-2300397

Chickasaw County, Iowa, 111 AC +/-



Boundary

L-2300397

Chickasaw County, Iowa, 111 AC +/-



 Boundary

L-2300397

Chickasaw County, Iowa, 111 AC +/-



Boundary

Boundary 33.54 ac

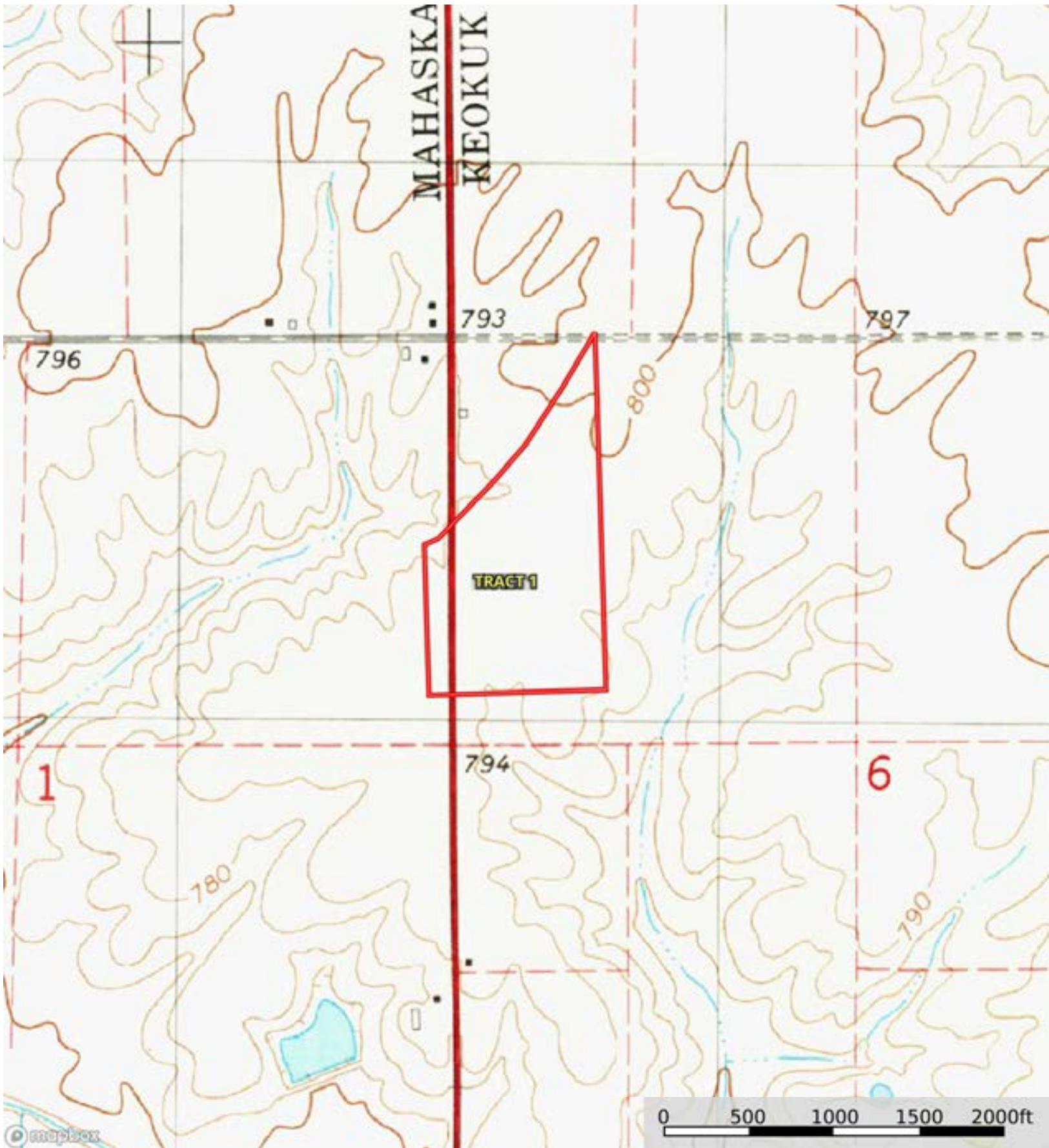
SOIL CODE	SOIL DESCRIPTION	ACRES	%	CSR2	CPI	NCCPI	CAP
198B	Floyd loam, 1 to 4 percent slopes	15.76	46.99	89.0	0	88	2w
84	Clyde clay loam, 0 to 3 percent slopes	11.73	34.97	88.0	0	91	2w
171C2	Bassett loam, 5 to 9 percent slopes, eroded	2.62	7.81	77.0	0	80	3e
171B	Bassett loam, 2 to 5 percent slopes	2.21	6.59	85.0	0	86	2e
482B	Racine loam, 2 to 5 percent slopes	0.54	1.61	76.0	0	63	2e
391B	Clyde-Floyd complex, 1 to 4 percent slopes	0.38	1.13	87.0	0	89	2w
471B	Oran loam, 2 to 5 percent slopes	0.3	0.89	74.0	0	77	1
TOTALS		33.54(*)	100%	87.08	-	87.8	2.07

(*) Total acres may differ in the second decimal compared to the sum of each acreage soil. This is due to a round error because we only show the acres of each soil with two decimal.



L-2300397

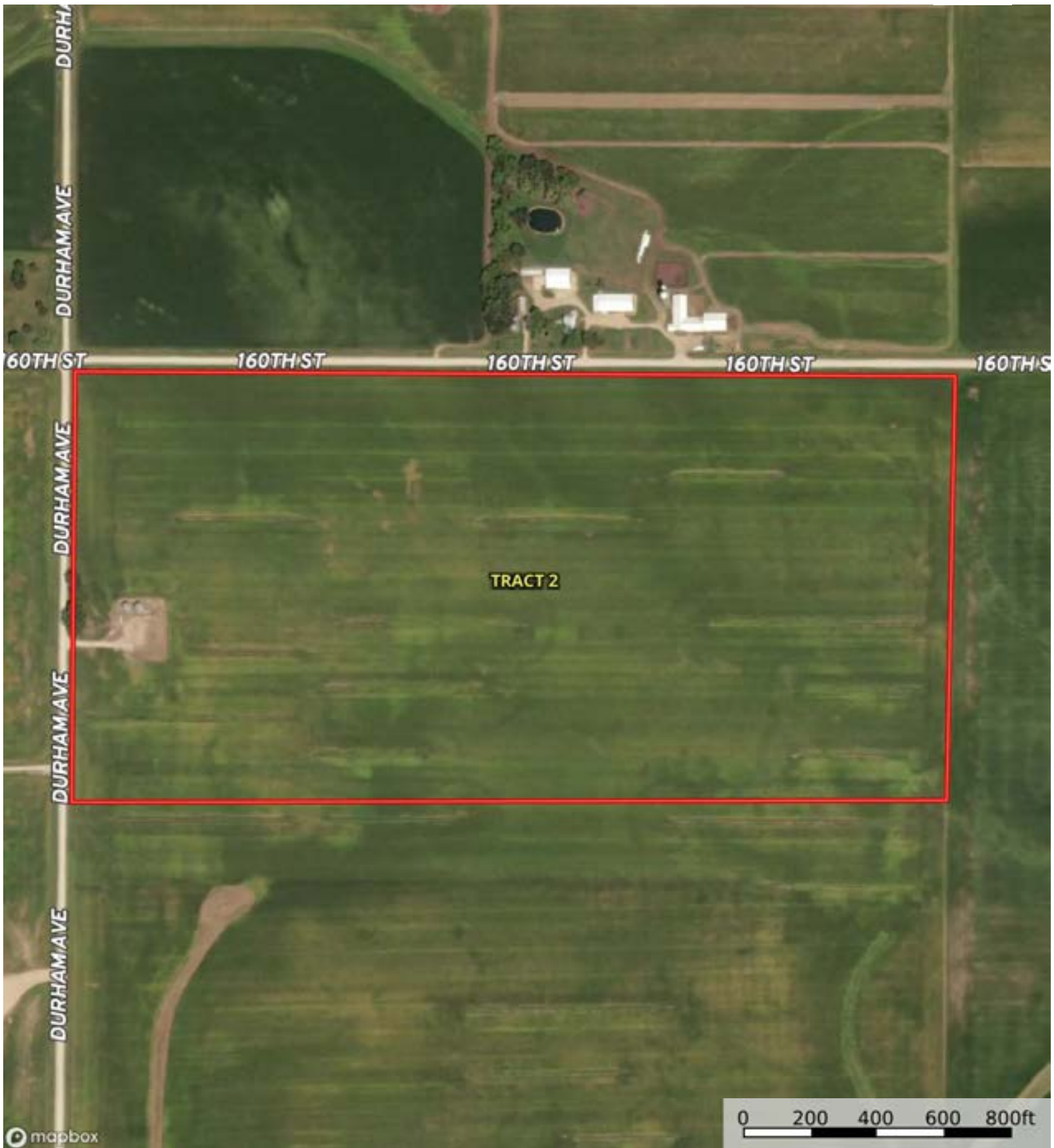
Chickasaw County, Iowa, 111 AC +/-



Boundary

L-2300397

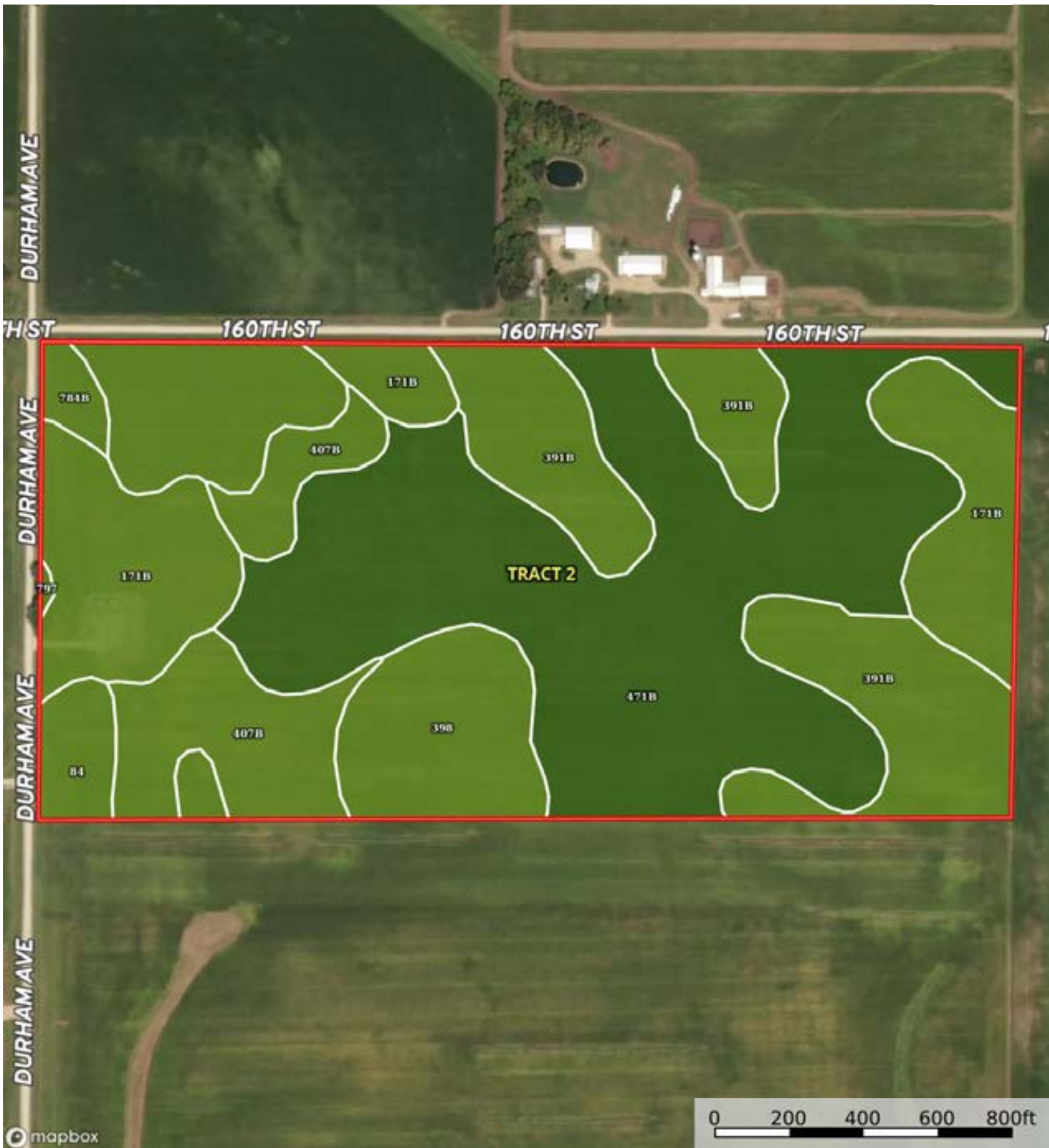
Chickasaw County, Iowa, 111 AC +/-




Boundary



The information contained herein was obtained from sources deemed to be reliable. Land ID™ Services makes no warranties or guarantees as to the completeness or accuracy thereof.



 Boundary

Boundary 77.48 ac

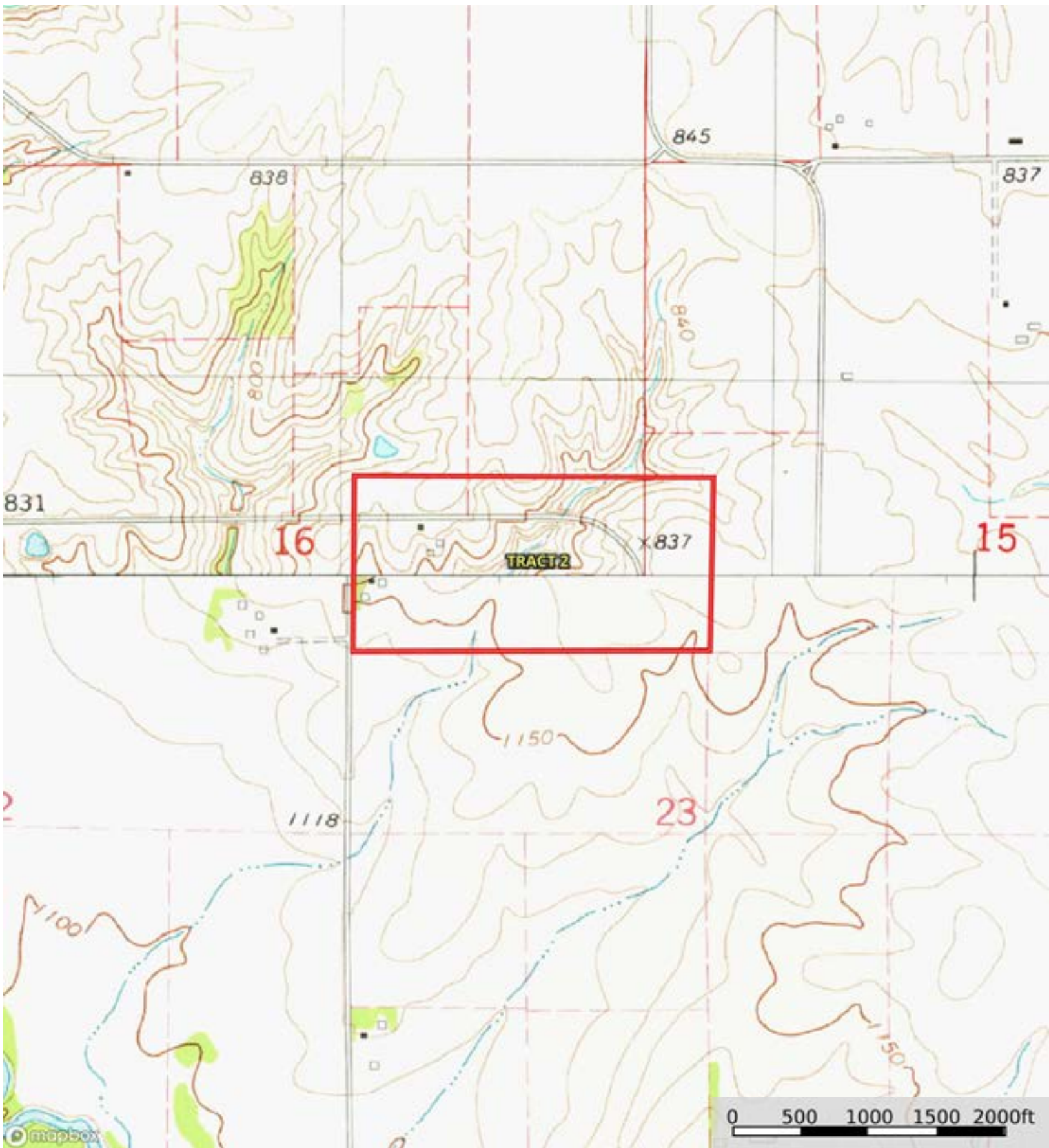
SOIL CODE	SOIL DESCRIPTION	ACRES	%	CSR2	CPI	NCCPI	CAP
471B	Oran loam, 2 to 5 percent slopes	31.15	40.21	74.0	0	77	1
391B	Clyde-Floyd complex, 1 to 4 percent slopes	12.95	16.72	87.0	0	89	2w
171B	Bassett loam, 2 to 5 percent slopes	12.44	16.06	85.0	0	86	2e
407B	Schley loam, 1 to 4 percent slopes	7.22	9.32	81.0	0	95	2w
84	Clyde clay loam, 0 to 3 percent slopes	7.11	9.18	88.0	0	91	2w
398	Tripoli clay loam, 0 to 2 percent slopes	5.66	7.31	82.0	0	66	2w
784B	Riceville loam, 1 to 4 percent slopes	0.86	1.11	68.0	0	75	2e
797	Jameston silty clay loam, 0 to 2 percent slopes	0.09	0.12	73.0	0	89	2w
TOTALS		77.48(*)	100%	80.41	-	82.62	1.6

(*) Total acres may differ in the second decimal compared to the sum of each acreage soil. This is due to a round error because we only show the acres of each soil with two decimal.



L-2300397

Chickasaw County, Iowa, 111 AC +/-



Boundary