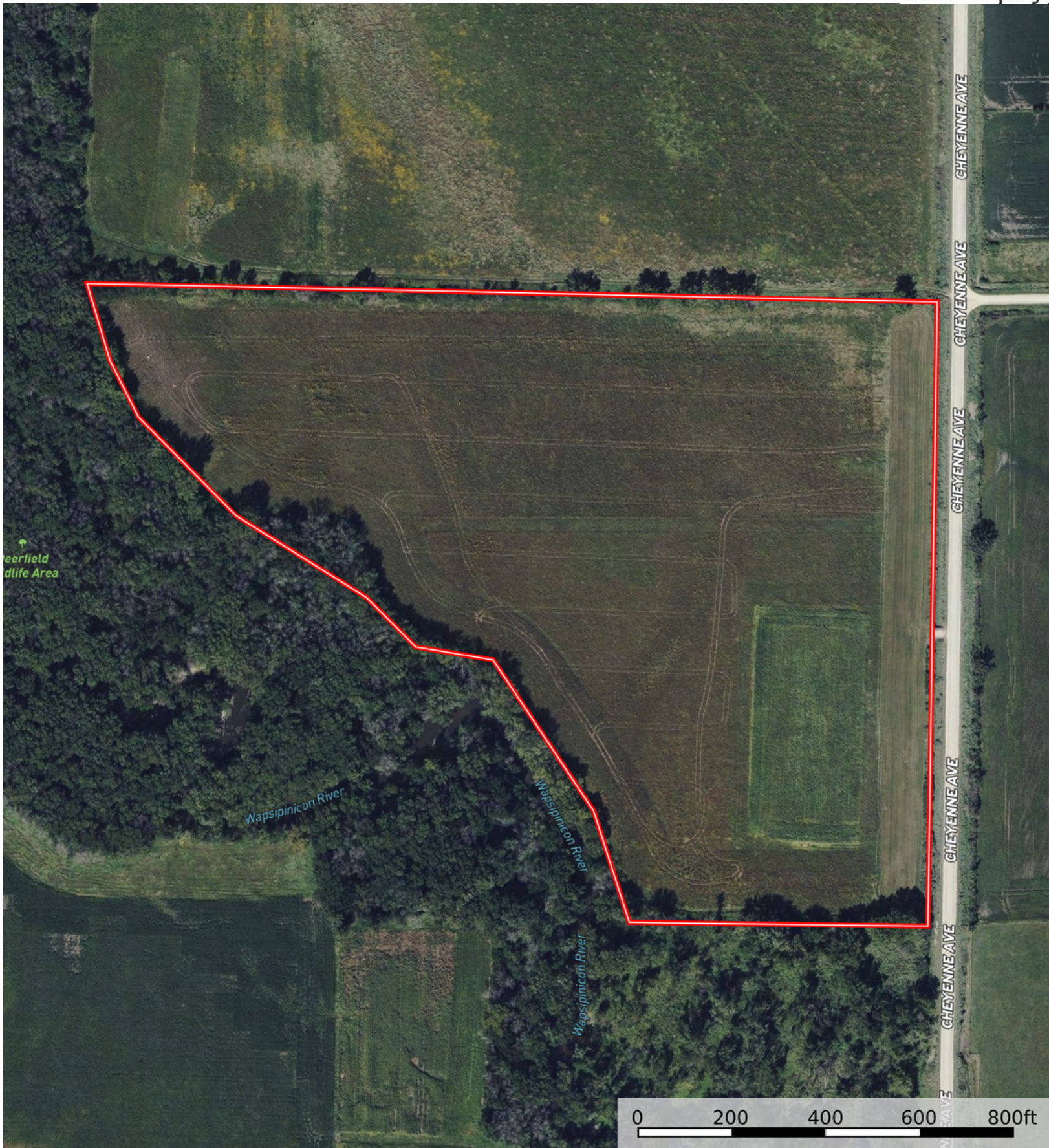
 Boundary





 Boundary



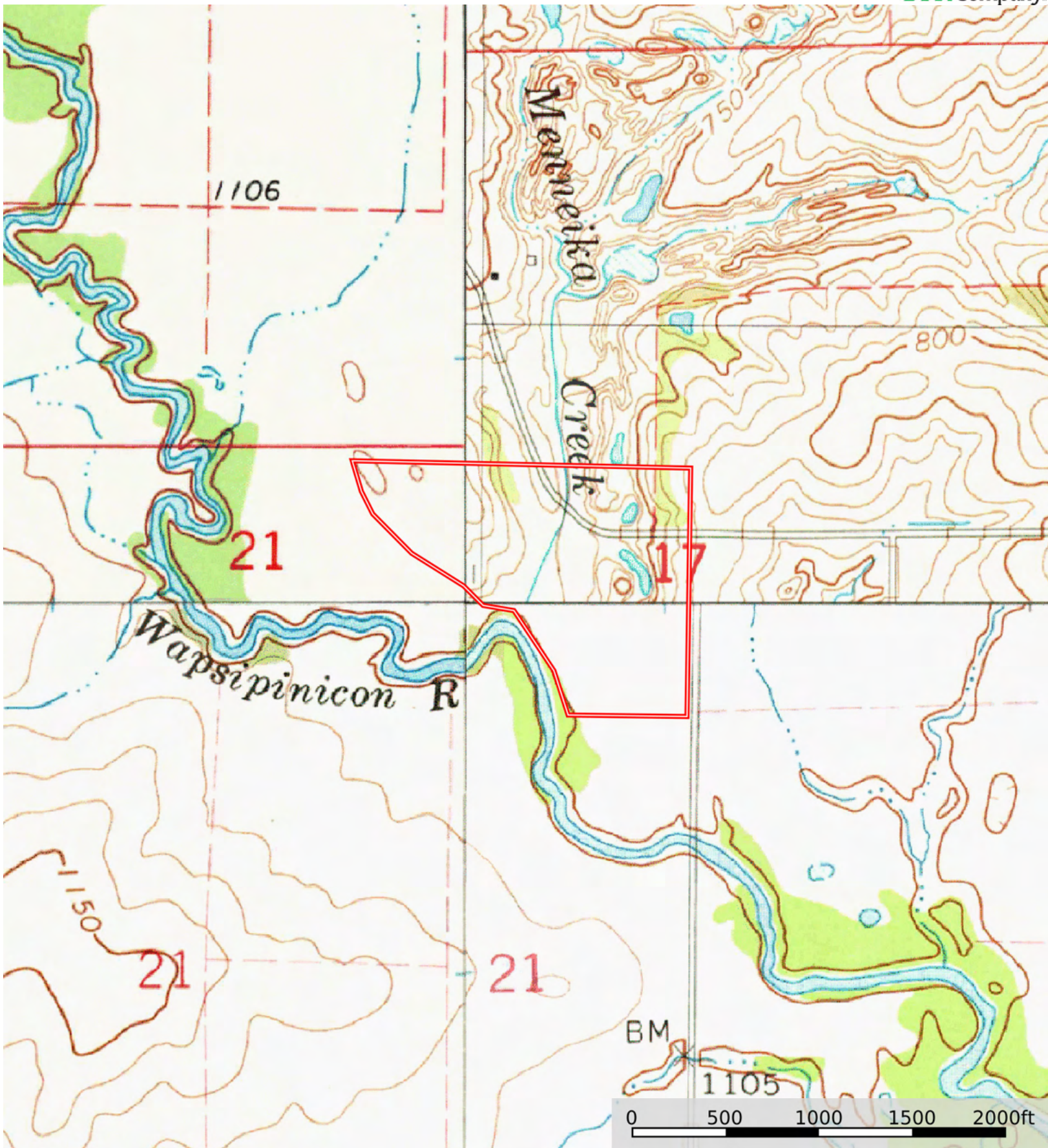
 Boundary

Boundary 37.21 ac

SOIL CODE	SOIL DESCRIPTION	ACRES	%	CSR2	CPI	NCCPI	CAP
1727	Udolpho loam, 0 to 2 percent slopes, rarely flooded	26.89	72.23	48.0	0	78	2w
1152	Marshan clay loam, 0 to 2 percent slopes, rarely flooded	7.3	19.61	54.0	0	82	2w
84	Clyde clay loam, 0 to 3 percent slopes	1.44	3.87	88.0	0	91	2w
153	Shandep clay loam, 0 to 1 percent slopes	1.01	2.71	50.0	0	83	3w
1585	Spillville-Coland complex, 0 to 2 percent slopes, frequently flooded	0.31	0.83	22.0	0	65	5w
626	Hayfield loam, 0 to 2 percent slopes, rarely flooded	0.26	0.7	53.0	0	81	2s
TOTALS		37.21(*)	100%	50.57	-	79.29	2.05

(*) Total acres may differ in the second decimal compared to the sum of each acreage soil. This is due to a round error because we only show the acres of each soil with two decimal.





 Boundary