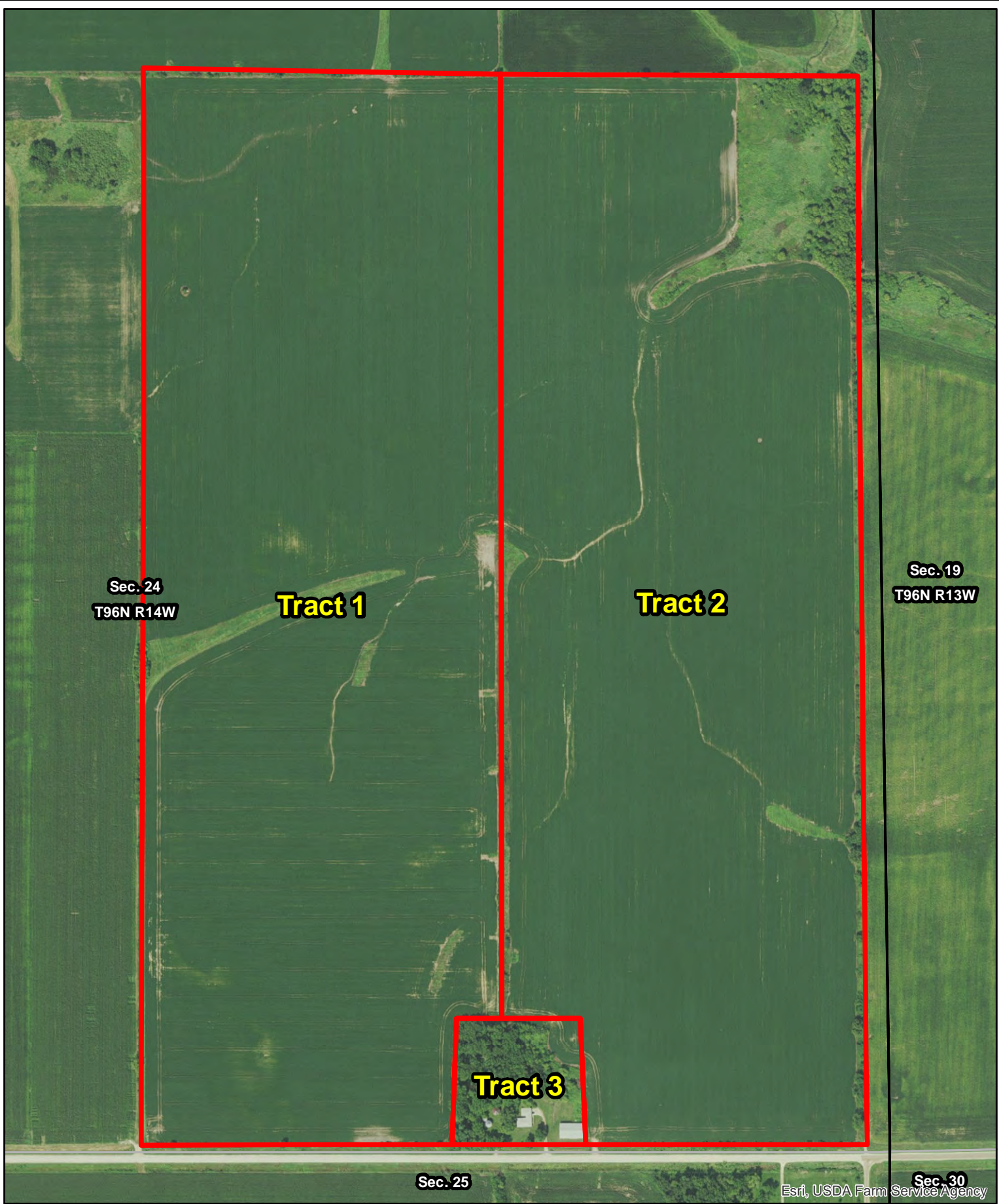


**Carpenter
Chickasaw County, Iowa**

Latitude: 43.0919°N
 Longitude: -92.3810°W
 Imagery Source: USDA NAIP
 Soil Data Source: USDA NRCS
 Boundaries Are Approximate

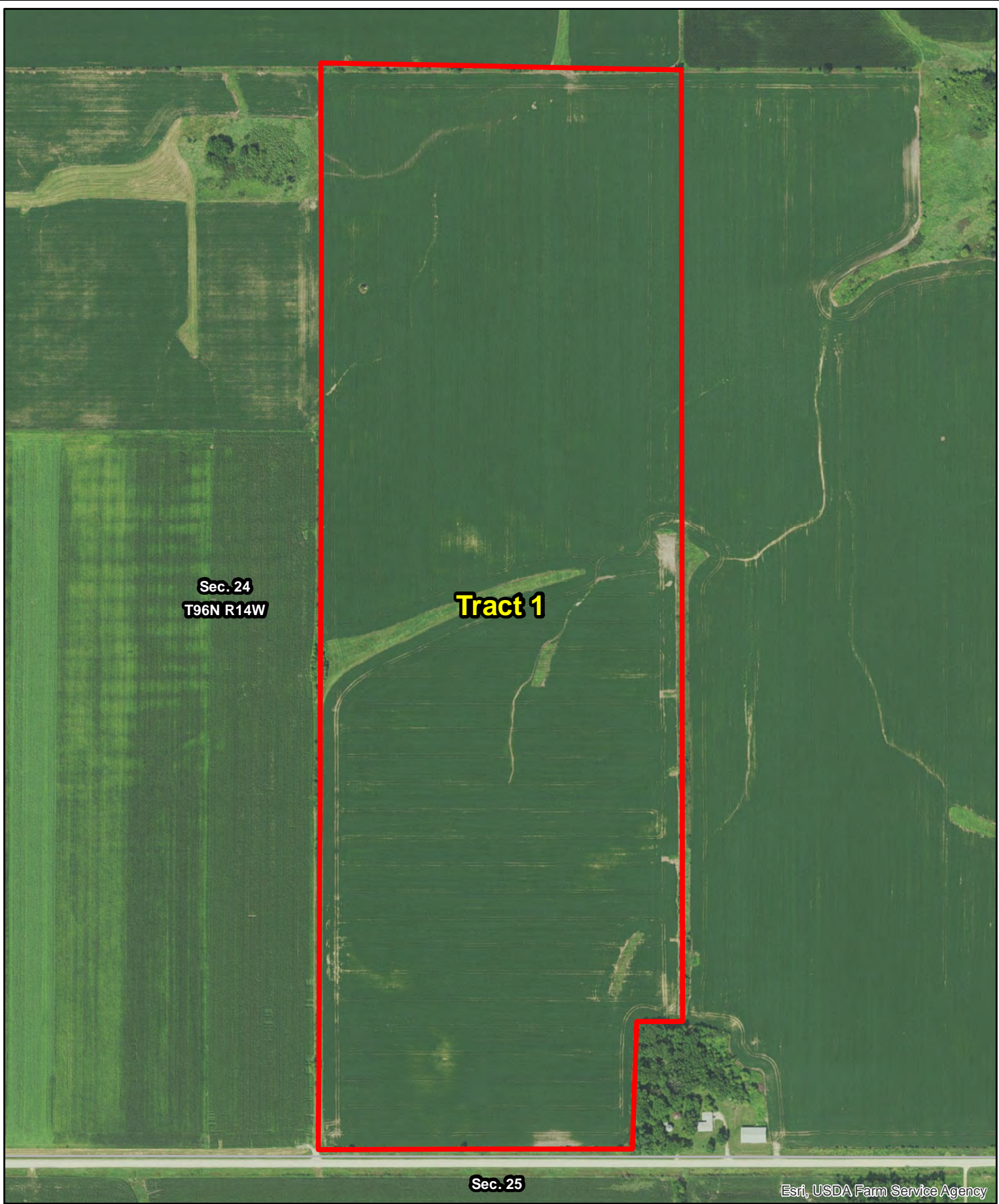


Esri, USDA Farm Service Agency



**Carpenter
Chickasaw County, Iowa**

Latitude: 43.1179°N
Longitude: -92.4410°W
Imagery Source: USDA NAIP
Soil Data Source: USDA NRCS
Boundaries Are Approximate



Sec. 24
T96N R14W

Tract 1

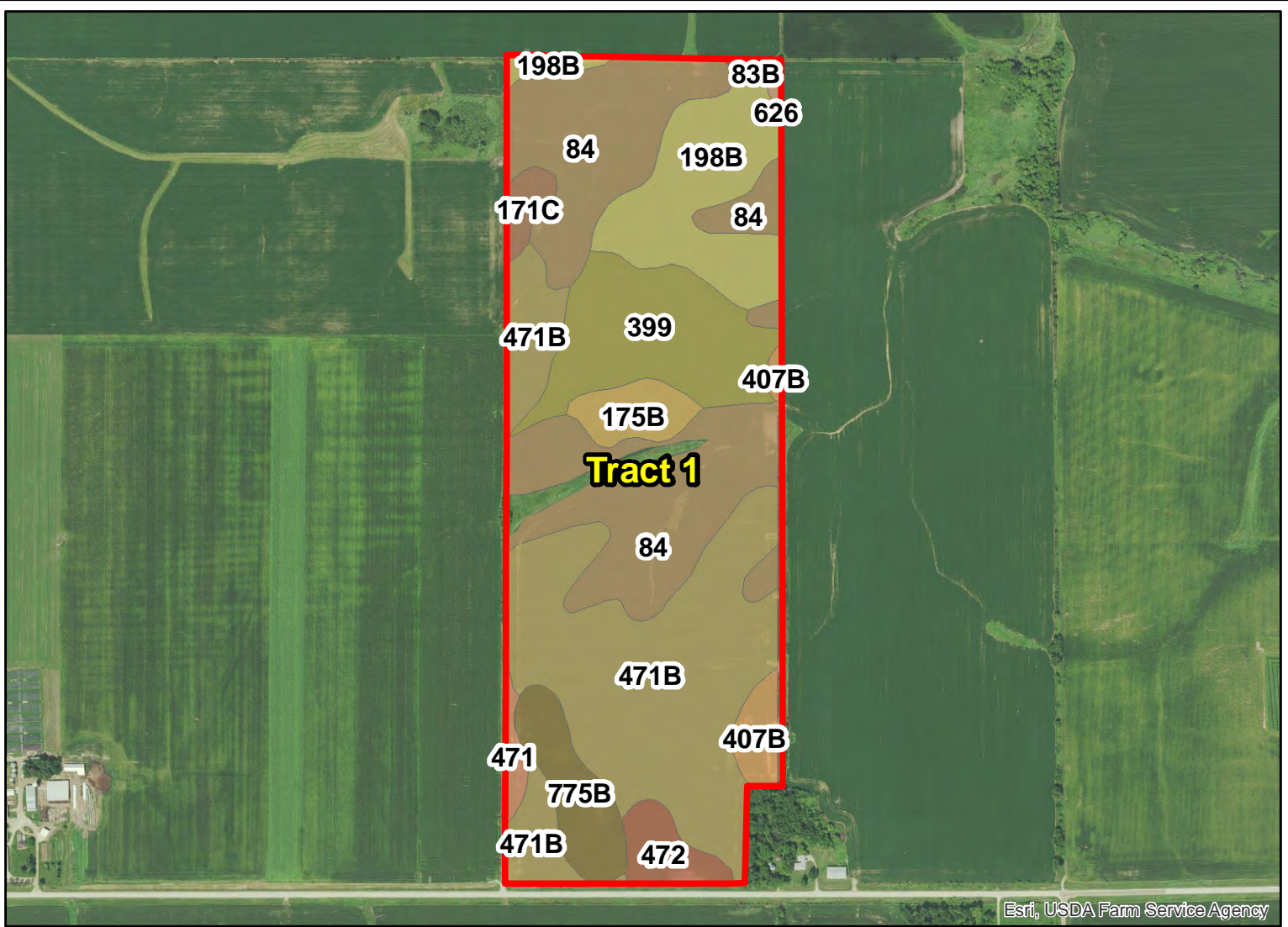
Sec. 25

Esri, USDA Farm Service Agency



Carpenter
Chickasaw County, Iowa

Latitude: 43.1179°N
Longitude: -92.4434°W
Imagery Source: USDA NAIP
Soil Data Source: USDA NRCS
Boundaries Are Approximate



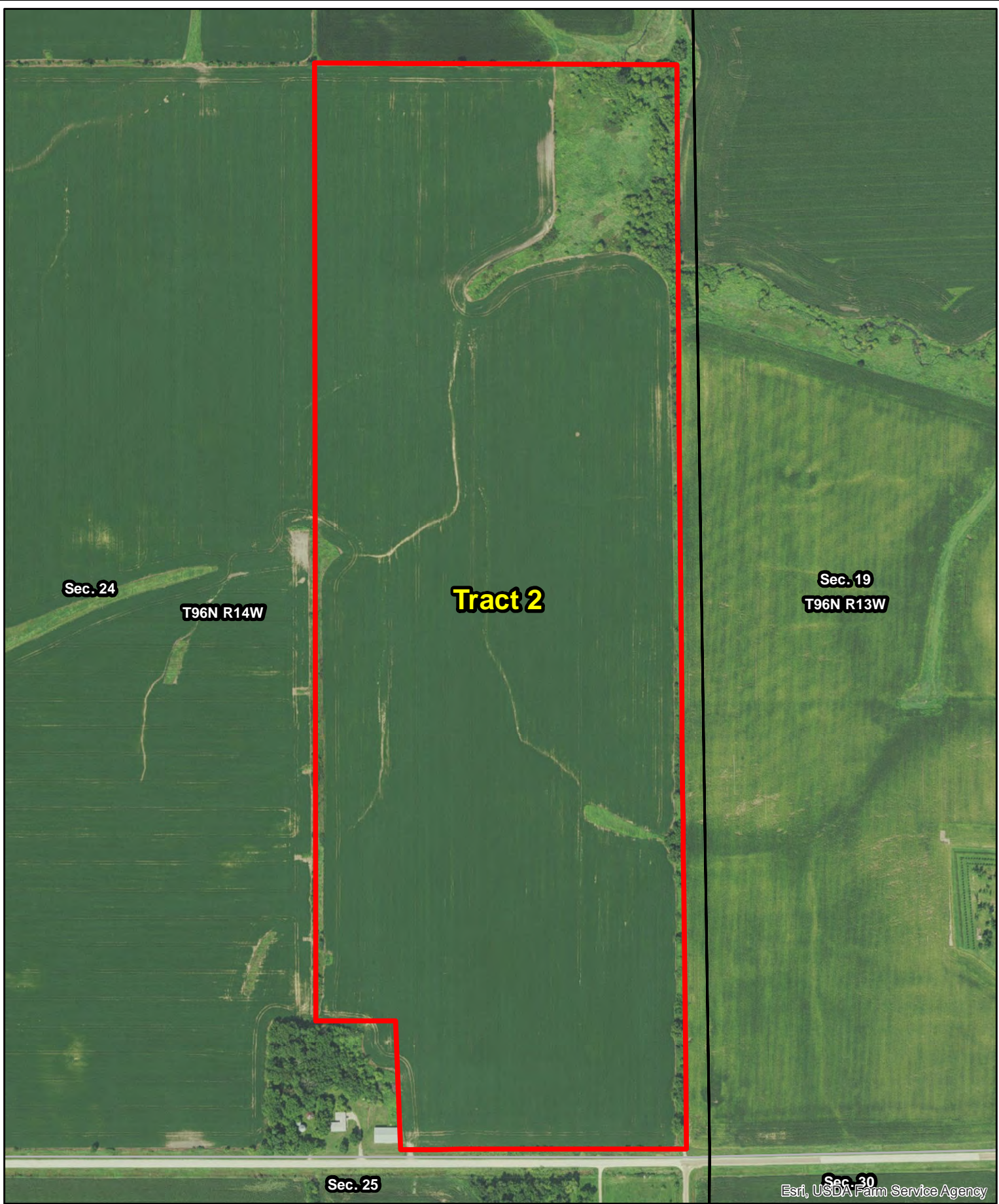
Esri, USDA Farm Service Agency

| MAP SYMBOL | NAME | NON IRR | | |
|--------------|--|---------|-------------|--------------|
| | | LCC | CSR2 | ACRES |
| 471B | Oran loam, 2 to 5 percent slopes | Iw | 74 | 37.1 |
| 84 | Clyde clay loam, 0 to 3 percent slopes | IIw | 88 | 33.7 |
| 198B | Floyd loam, 1 to 4 percent slopes | IIw | 89 | 13.6 |
| 399 | Readlyn silt loam, 1 to 3 percent slopes | Iw | 91 | 13.5 |
| 775B | Billett sandy loam, 2 to 5 percent slopes | III s | 67 | 5.5 |
| 175B | Dickinson fine sandy loam, 2 to 5 percent slopes | III e | 50 | 3.3 |
| 472 | Havana loam, 0 to 2 percent slopes | IIw | 76 | 3.0 |
| 407B | Schley loam, 1 to 4 percent slopes | IIw | 81 | 2.5 |
| 171C | Bassett loam, 5 to 9 percent slopes | III e | 80 | 1.5 |
| 471 | Oran loam, 0 to 2 percent slopes | Iw | 79 | 1.1 |
| 83B | Kenyon loam, 2 to 5 percent slopes | II e | 90 | 0.5 |
| 626 | Hayfield loam, 0 to 2 percent slopes, rarely flooded | II s | 53 | 0.2 |
| TOTAL | | | 81.2 | 115.4 |



Carpenter
Chickasaw County, Iowa

Latitude: 43.1179°N
Longitude: -92.4434°W
Imagery Source: USDA NAIP
Soil Data Source: USDA NRCS
Boundaries Are Approximate



Sec. 24

T96N R14W

Tract 2

Sec. 19

T96N R13W

Sec. 25

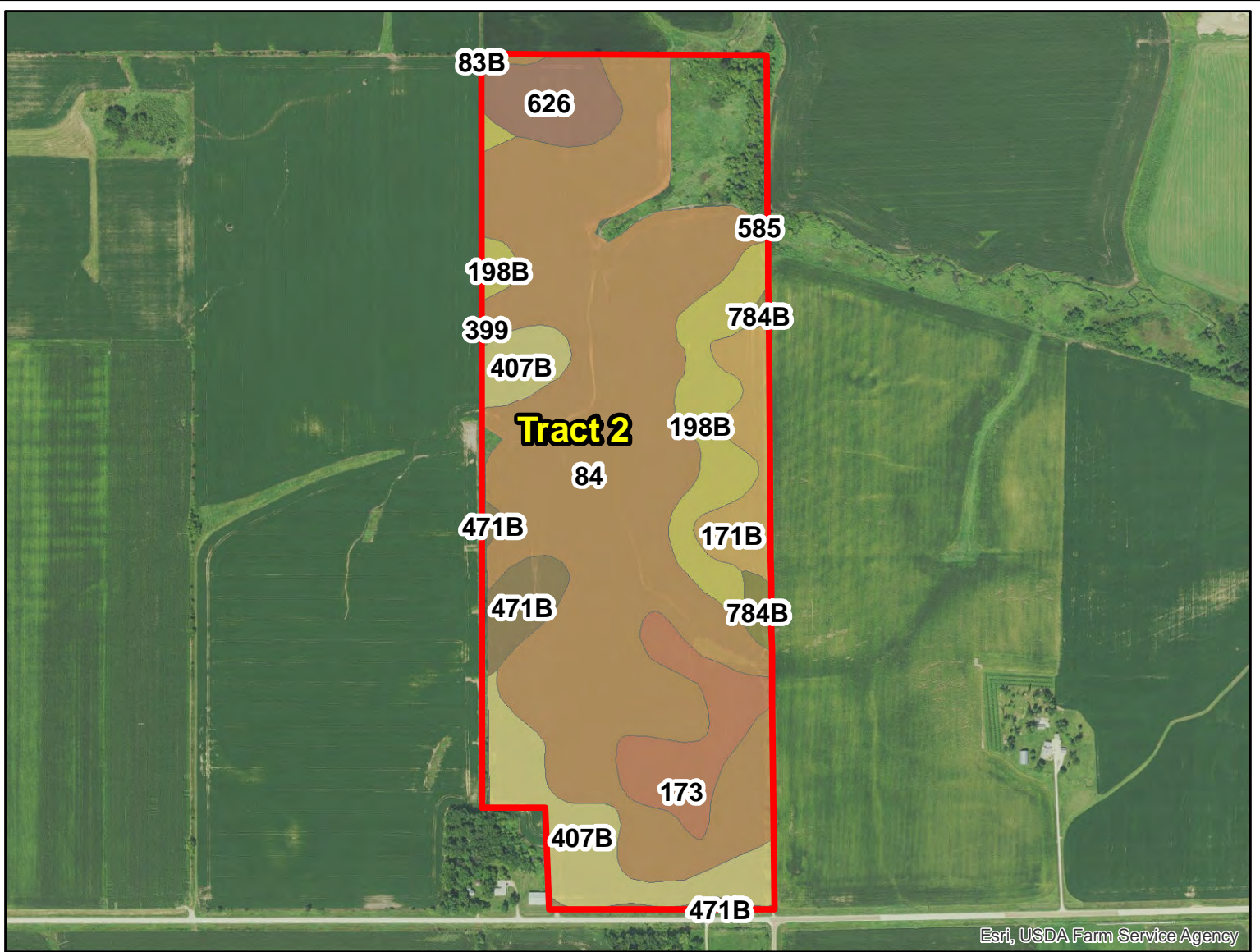
Sec. 30

Esri, USDA Farm Service Agency



**Carpenter
Chickasaw County, Iowa**

Latitude: 43.1179°N
Longitude: -92.4384°W
Imagery Source: USDA NAIP
Soil Data Source: USDA NRCS
Boundaries Are Approximate

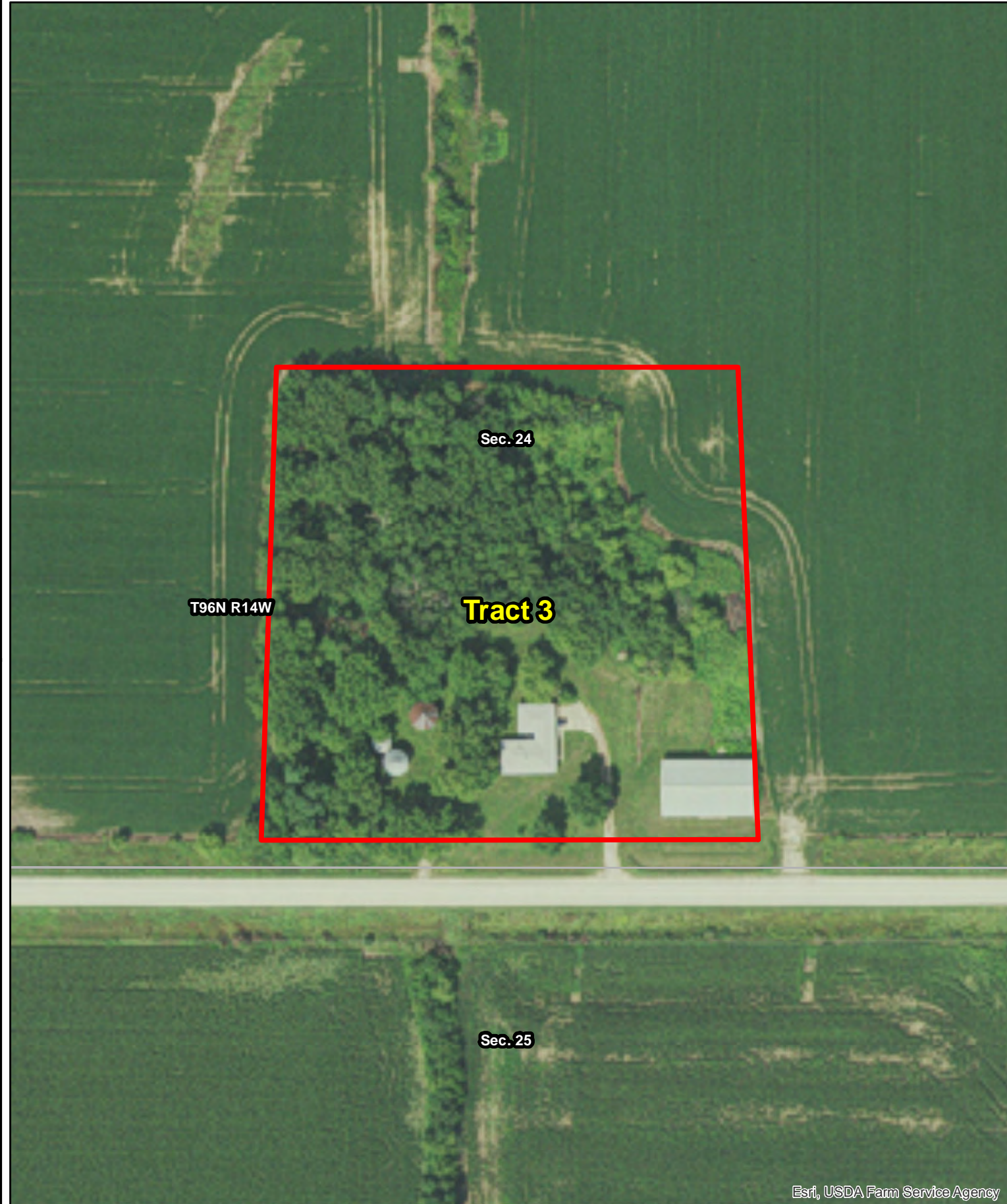


| MAP SYMBOL | NAME | NON IRR | | |
|--------------|--|---------|-------------|--------------|
| | | LCC | CSR2 | ACRES |
| 84 | Clyde clay loam, 0 to 3 percent slopes | llw | 88 | 65.0 |
| 407B | Schley loam, 1 to 4 percent slopes | llw | 81 | 11.6 |
| 198B | Floyd loam, 1 to 4 percent slopes | llw | 89 | 9.4 |
| 173 | Hoopeston sandy loam, 0 to 3 percent slopes | lls | 55 | 7.0 |
| 171B | Bassett loam, 2 to 5 percent slopes | lle | 85 | 5.2 |
| 626 | Hayfield loam, 0 to 2 percent slopes, rarely flooded | lls | 53 | 5.1 |
| 471B | Oran loam, 2 to 5 percent slopes | lw | 74 | 3.6 |
| 784B | Riceville loam, 1 to 4 percent slopes | lle | 68 | 1.1 |
| 399 | Readlyn silt loam, 1 to 3 percent slopes | lw | 91 | 0.1 |
| 83B | Kenyon loam, 2 to 5 percent slopes | lle | 90 | 0.0 |
| 585 | Coland-Spillville complex, 0 to 2 percent slopes | llw | 78 | 0.0 |
| TOTAL | | | 82.7 | 108.1 |



**Carpenter
Chickasaw County, Iowa**

Latitude: 43.1179°N
 Longitude: -92.4384°W
 Imagery Source: USDA NAIP
 Soil Data Source: USDA NRCS
 Boundaries Are Approximate

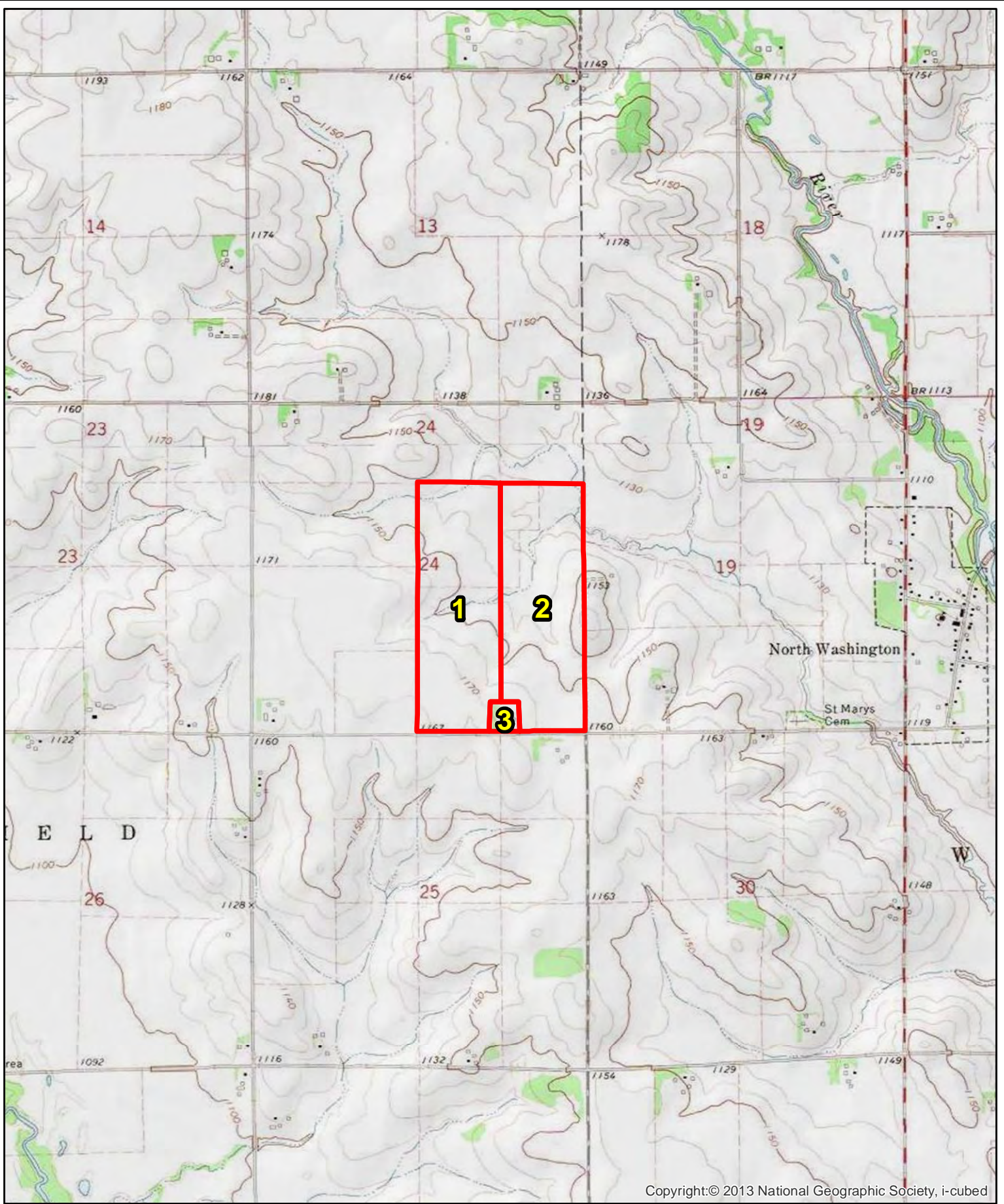


Esri, USDA Farm Service Agency



**Carpenter
Chickasaw County, Iowa**

Latitude: 43.1131°N
Longitude: -92.4408°W
Imagery Source: USDA NAIP
Soil Data Source: USDA NRCS
Boundaries Are Approximate



Copyright:© 2013 National Geographic Society, i-cubed



Carpenter
Chickasaw County, Iowa

Latitude: 43.1179°N
Longitude: -92.4410°W
Imagery Source: USDA NAIP
Soil Data Source: USDA NRCS
Boundaries Are Approximate