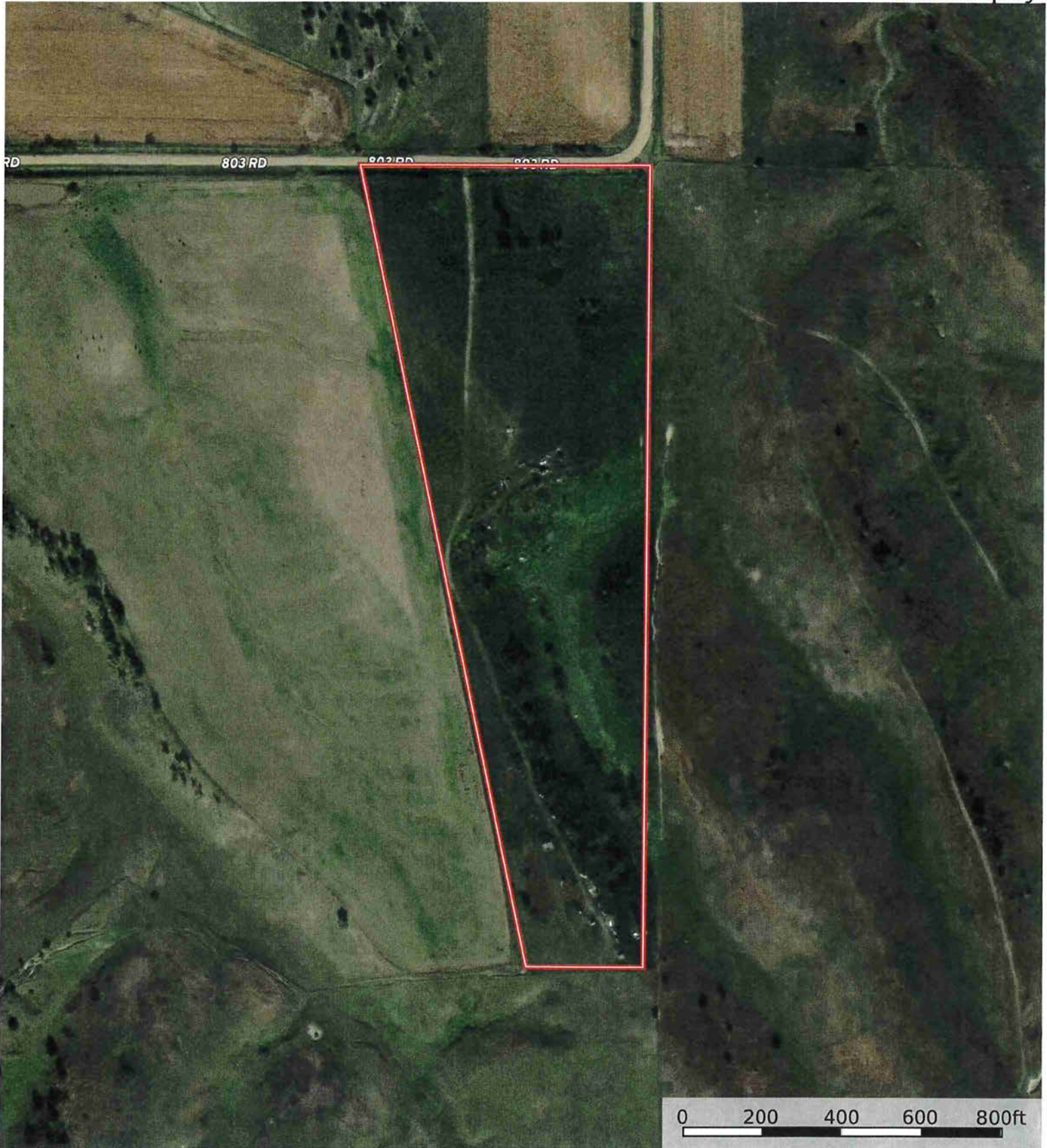


L-2400540

Custer County, Nebraska, 24.54 AC +/-



Boundary

L-2400540

Custer County, Nebraska, 24.54 AC +/-



Boundary



The information contained herein was obtained from sources deemed to be reliable. Land id™ Services makes no warranties or guarantees as to the completeness or accuracy thereof.

Boundary 23.61 ac

| SOIL CODE | SOIL DESCRIPTION                                      | ACRES    | %     | CPI | NCCPI | CAP  |
|-----------|-------------------------------------------------------|----------|-------|-----|-------|------|
| 2831      | Uly-Coly silt loams, 17 to 30 percent slopes, eroded  | 14.87    | 62.98 | 0   | 49    | 6e   |
| 4138      | Holdrege silt loam, 7 to 11 percent slopes            | 5.24     | 22.19 | 0   | 72    | 4e   |
| 2538      | Coly silt loam, 6 to 11 percent slopes, eroded        | 2.15     | 9.11  | 0   | 58    | 4e   |
| 3562      | Hobbs silt loam, occasionally flooded, cool           | 0.88     | 3.73  | 0   | 74    | 2w   |
| 2543      | Coly silt loam, 11 to 17 percent slopes, eroded, cool | 0.41     | 1.74  | 0   | 53    | 6e   |
| 2823      | Uly silt loam, 11 to 17 percent slopes, eroded        | 0.06     | 0.25  | 0   | 61    | 6e   |
| TOTALS    |                                                       | 23.61(*) | 100%  | -   | 55.96 | 5.22 |

(\*) Total acres may differ in the second decimal compared to the sum of each acreage soil. This is due to a round error because we only show the acres of each soil with two decimal.

### Capability Legend

Increased Limitations and Hazards

Decreased Adaptability and Freedom of Choice Users

Land, Capability

|              | 1 | 2 | 3 | 4 | 5 | 6 | 7 | 8 |
|--------------|---|---|---|---|---|---|---|---|
| 'Wild Life'  | • | • | • | • | • | • | • | • |
| Forestry     | • | • | • | • | • | • | • |   |
| Limited      | • | • | • | • | • | • | • |   |
| Moderate     | • | • | • | • | • | • |   |   |
| Intense      | • | • | • | • | • |   |   |   |
| Limited      | • | • | • | • |   |   |   |   |
| Moderate     | • | • | • |   |   |   |   |   |
| Intense      | • | • |   |   |   |   |   |   |
| Very Intense | • |   |   |   |   |   |   |   |

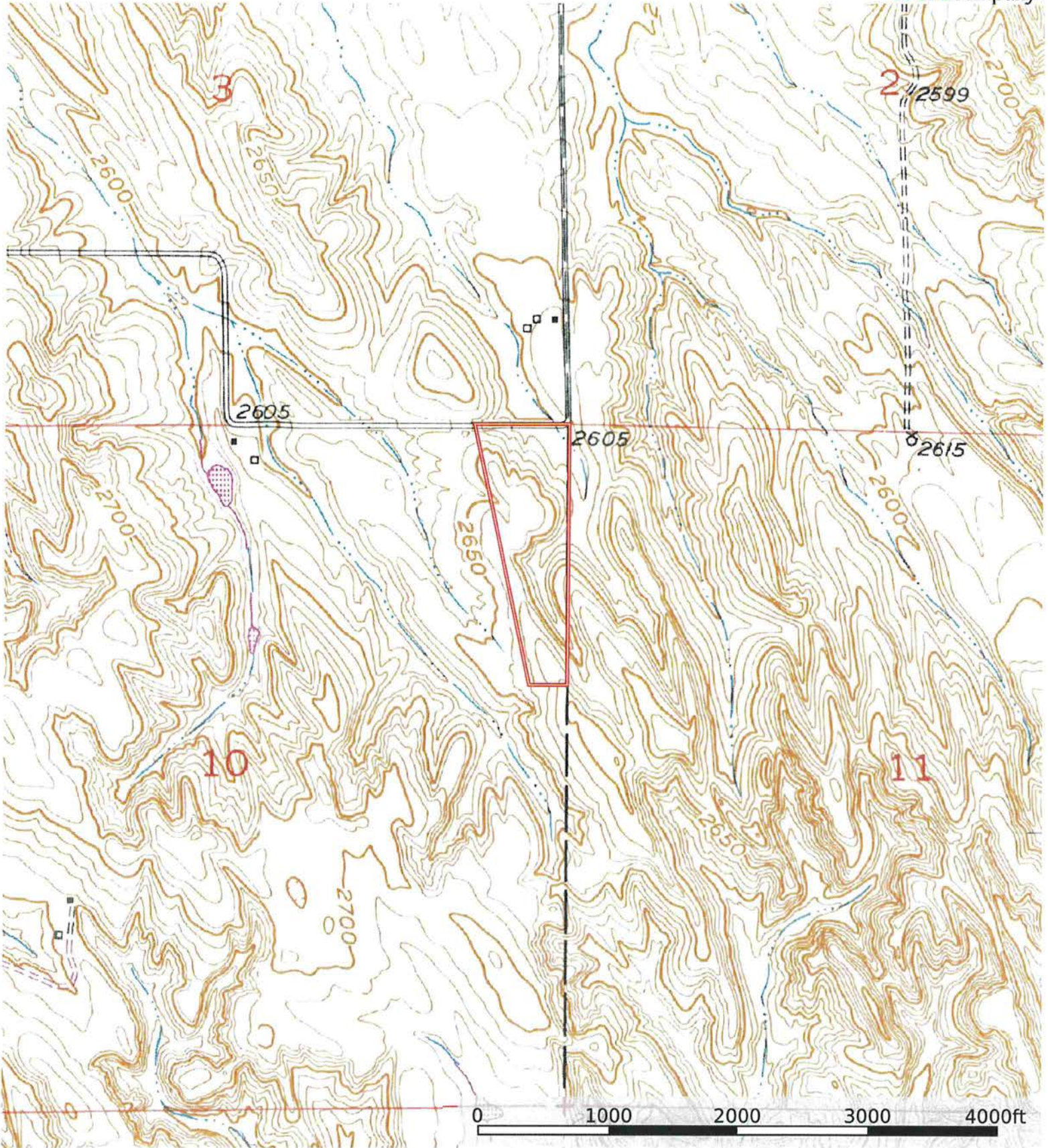
### Grazing Cultivation

(c) climatic limitations (e) susceptibility to erosion

(s) soil limitations within the rooting zone (w) excess of water

L-2400540

Custer County, Nebraska, 24.54 AC +/-



Boundary