

Boundary





Boundary



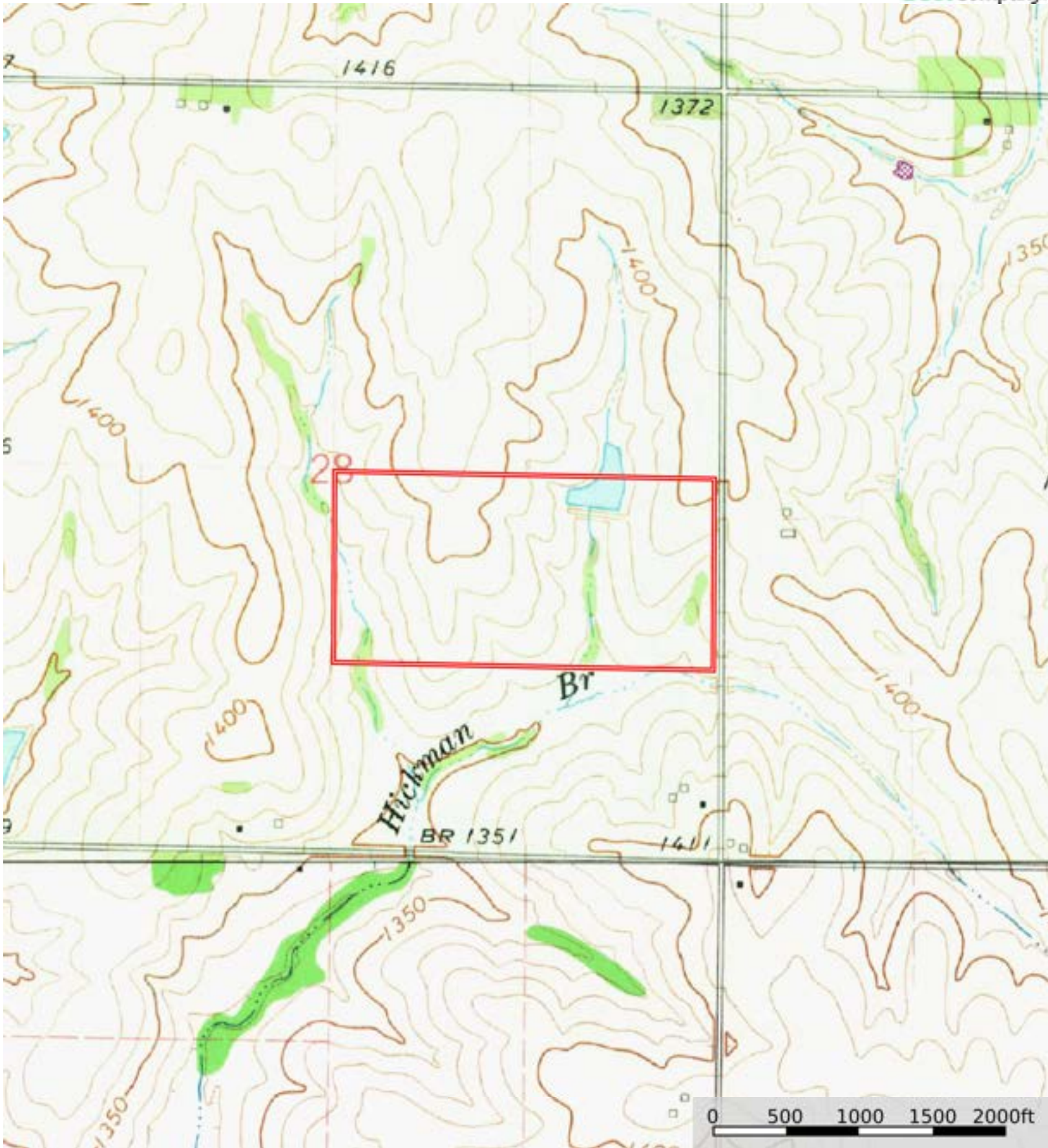
Boundary

| Boundary 78.53 ac

SOIL CODE	SOIL DESCRIPTION	ACRES	%	CPI	NCCPI	CAP
7684	Wymore silty clay loam, 3 to 6 percent slopes, eroded	26.47	33.71	0	61	3e
7466	Otoe silty clay, 6 to 11 percent slopes, eroded	12.56	16.0	0	54	4e
7231	Judson silt loam, 2 to 6 percent slopes	10.79	13.74	0	78	2e
7680	Wymore silty clay loam, 0 to 1 percent slopes	9.54	12.15	0	67	2s
7666	Mayberry silty clay loam, 3 to 6 percent slopes, eroded	8.42	10.72	0	53	3e
7507	Pawnee clay loam, 6 to 11 percent slopes, eroded	6.83	8.7	0	42	4e
7774	Colo-Nodaway silty clay loams, frequently flooded	2.18	2.78	0	61	3w
7750	Nodaway silt loam, occasionally flooded	1.74	2.22	0	94	2w
TOTALS		78.53(*)	100%	-	61.17	2.97

(*) Total acres may differ in the second decimal compared to the sum of each acreage soil. This is due to a round error because we only show the acres of each soil with two decimal.





Boundary