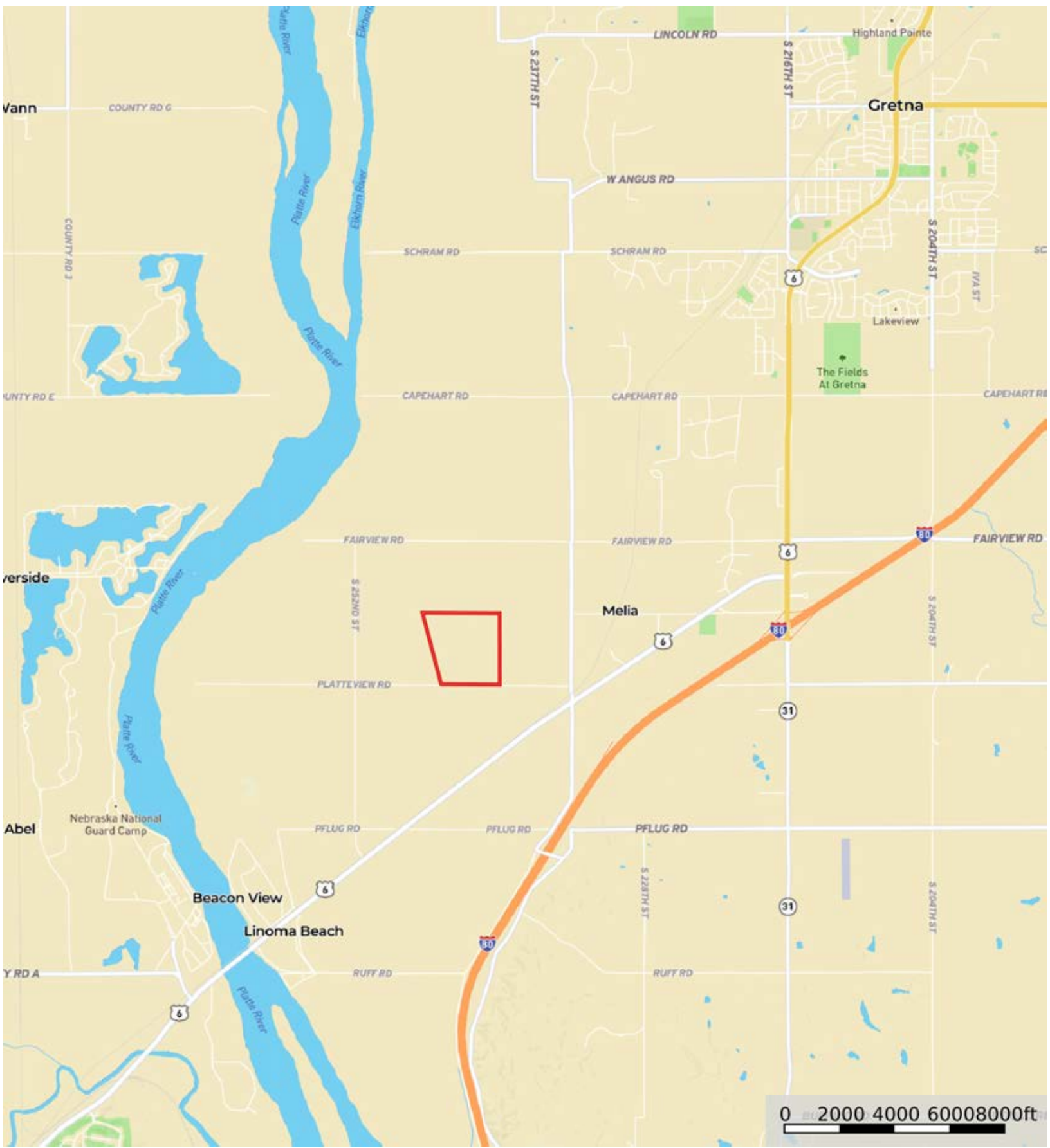
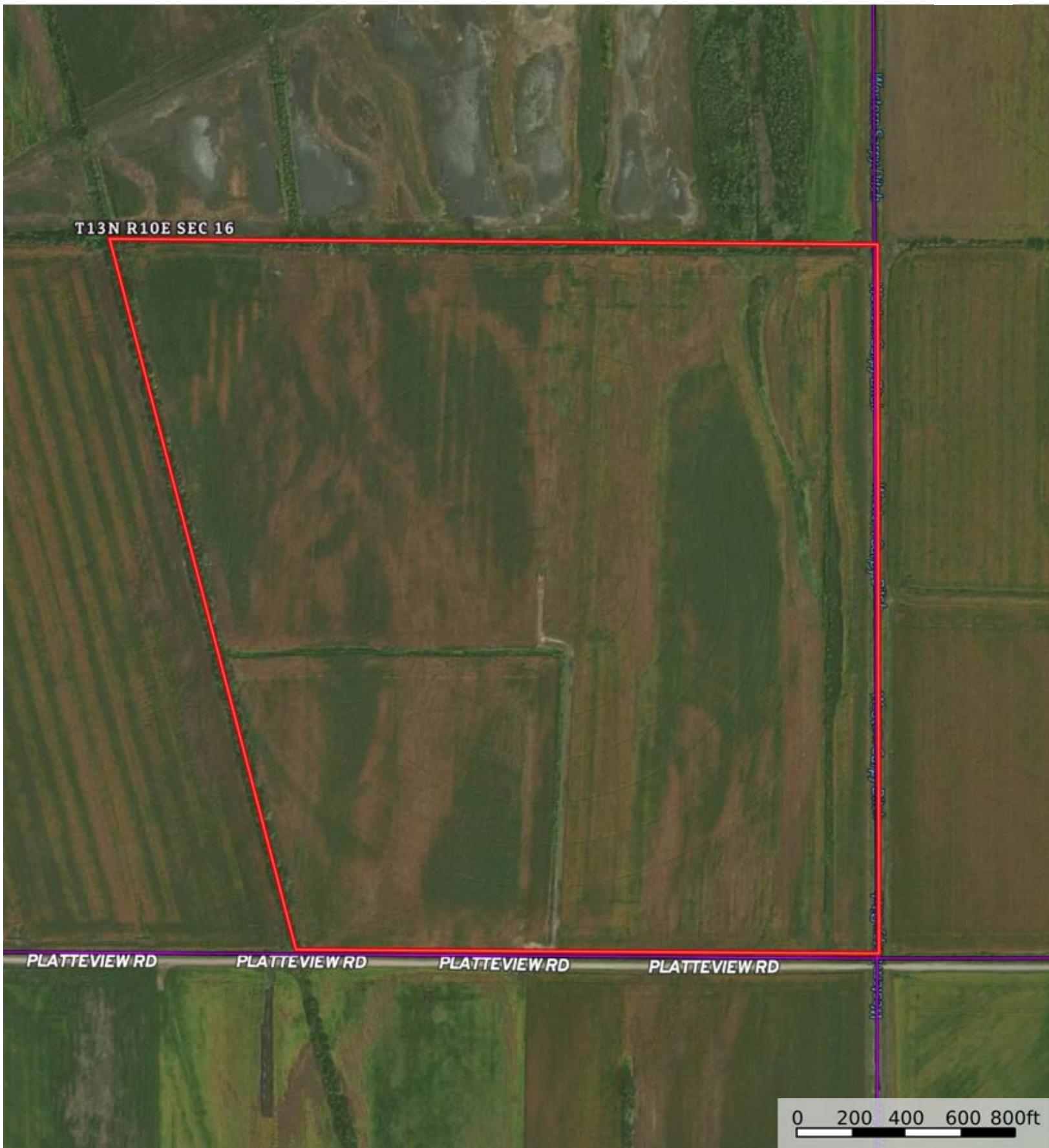



Cockerill Trust

Sarpy County, Nebraska, 148.44 AC +/-




 Boundary



 Boundary



 Boundary

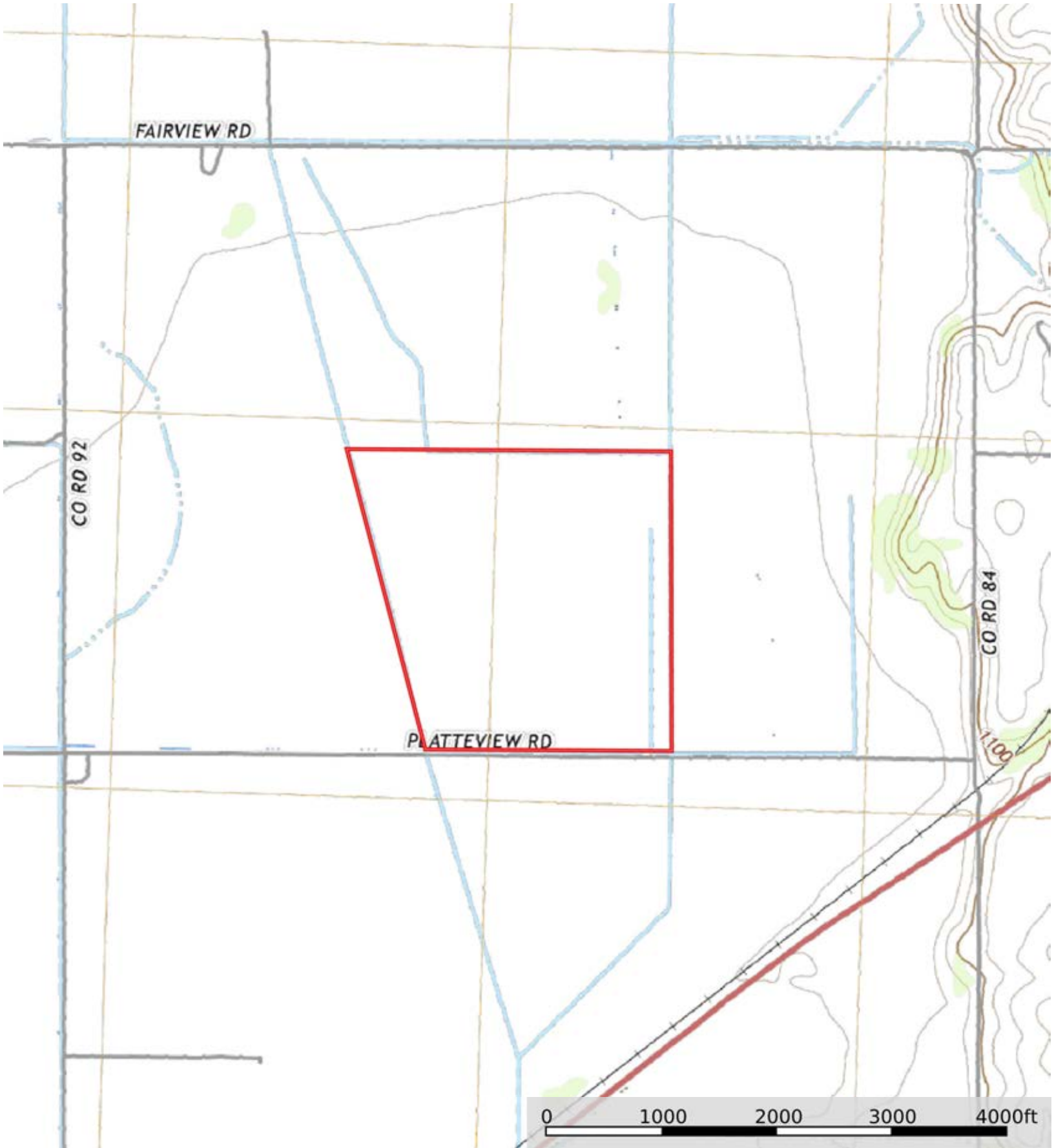
|  Boundary 148.35 ac


SOIL CODE	SOIL DESCRIPTION	ACRES	%	CPI	NCCPI	CAP
8468	Gibbon loamy sand, overwash, 0 to 2 percent slopes, occasionally flooded	145.97	98.4	0	44	2w
3537	Gibbon silty clay loam, occasionally flooded	2.38	1.6	0	80	2w
TOTALS		148.35(*)	100%	-	44.58	2.0

(*) Total acres may differ in the second decimal compared to the sum of each acreage soil. This is due to a round error because we only show the acres of each soil with two decimal.



Cockerill Trust
Sarpy County, Nebraska, 148.44 AC +/-



 Boundary