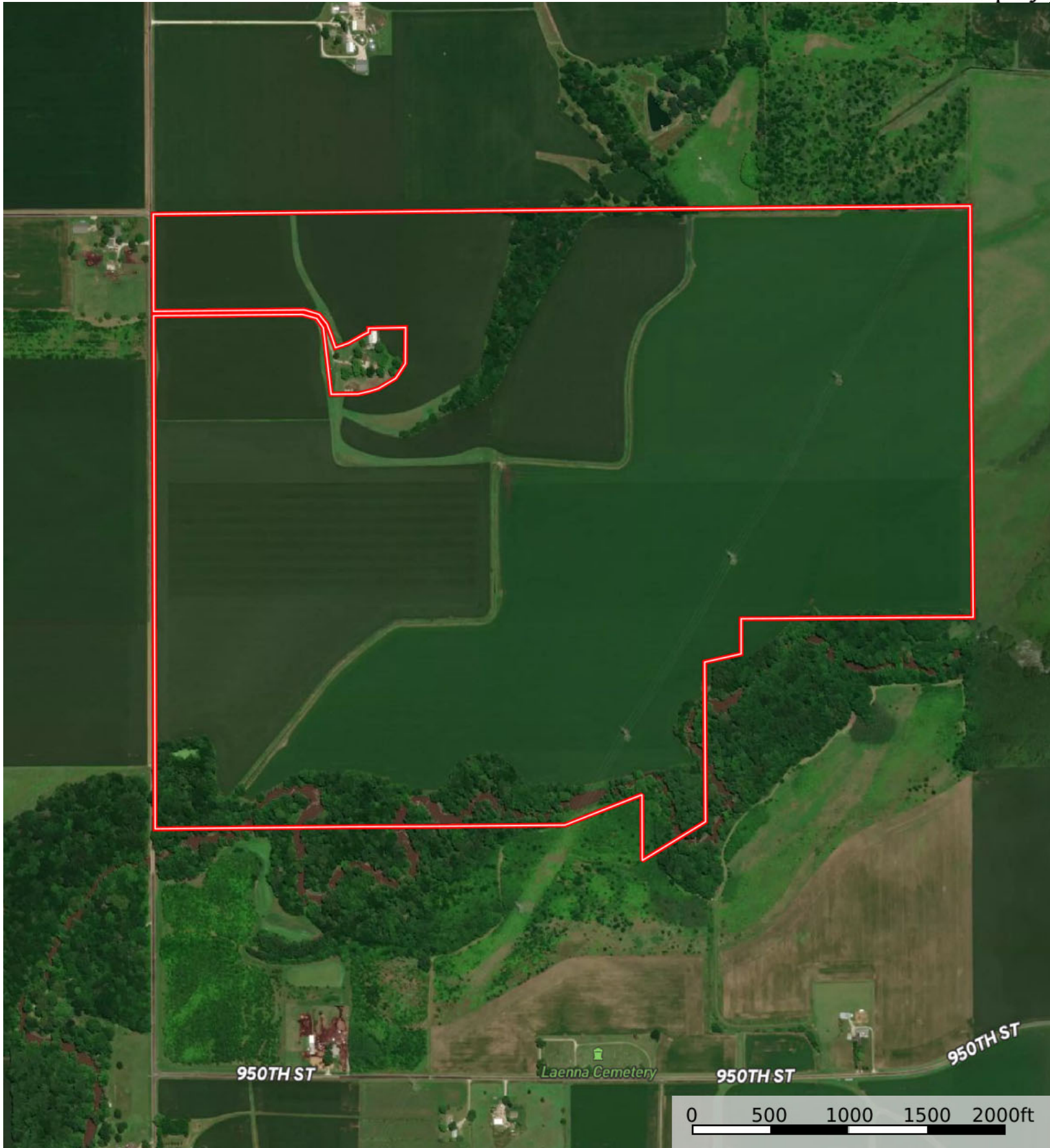

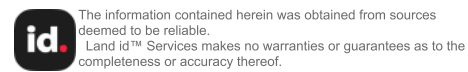
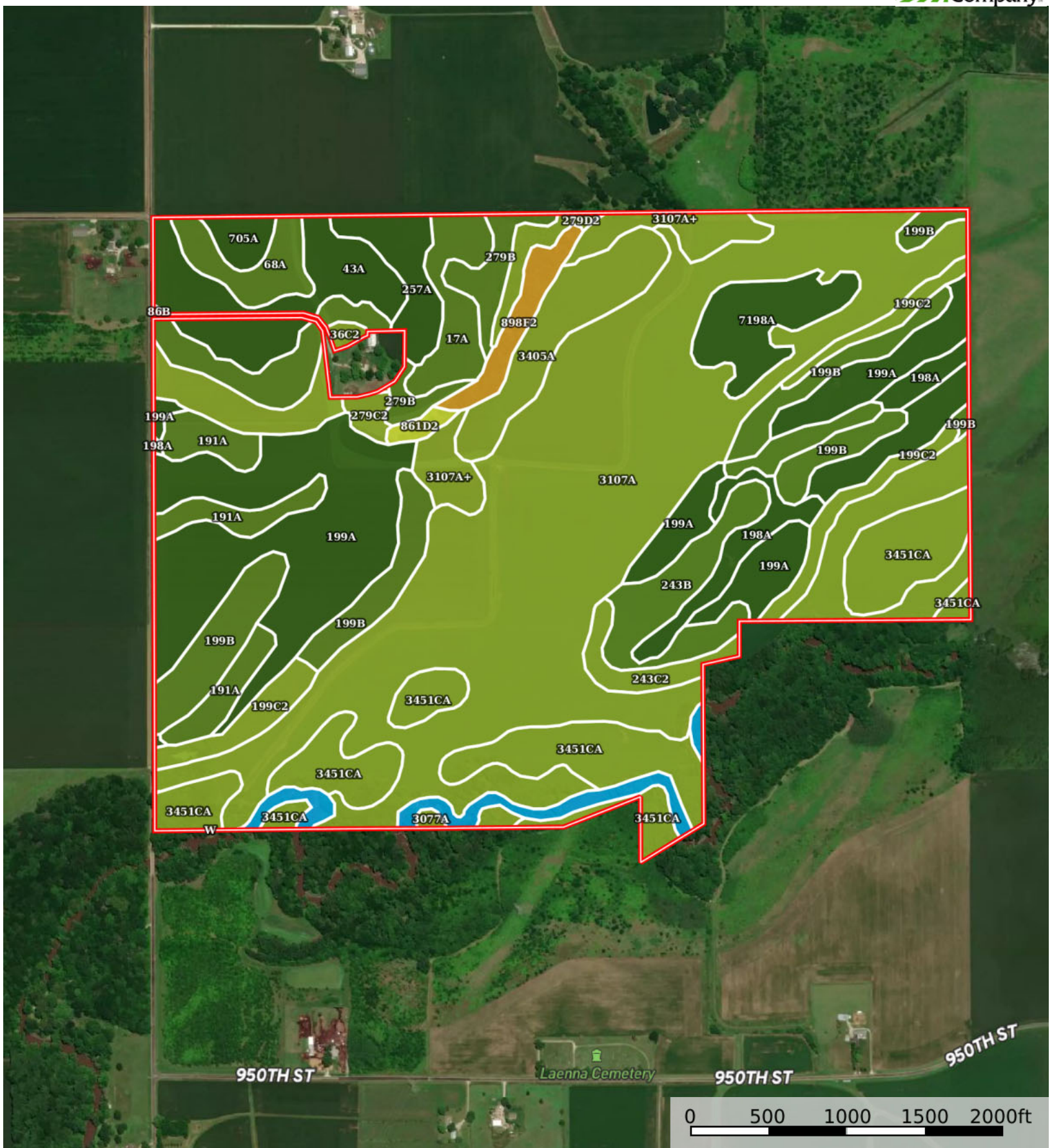
 Boundary



 Boundary

Logan County, Illinois, 424.62 AC +/-



 Boundary 419.55 ac

SOIL CODE	SOIL DESCRIPTION	ACRES	%	PI	NCCPI	CAP
3107A	Sawmill silty clay loam, 0 to 2 percent slopes, frequently flooded	136.15	32.45	139	63	3w
199A	Plano silt loam, 0 to 2 percent slopes	60.18	14.34	142	91	1
3451cA	Lawson silt loam, cool mesic, 0 to 2 percent slopes, frequently flooded	38.53	9.18	140	87	3w
199B	Plano silt loam, 2 to 5 percent slopes	24.97	5.95	141	93	2e
43A	Ipava silt loam, 0 to 2 percent slopes	15.86	3.78	142	91	1
191A	Knight silt loam, 0 to 2 percent slopes	14.16	3.38	121	85	2w
3405A	Zook silty clay loam, 0 to 2 percent slopes, frequently flooded	12.57	3.0	116	50	3w
199C2	Plano silt loam, 5 to 10 percent slopes, eroded	11.34	2.7	132	82	3e
243B	St. Charles silt loam, 2 to 5 percent slopes	10.82	2.58	121	89	2e
7198A	Elburn silt loam, 0 to 2 percent slopes, rarely flooded	10.21	2.43	143	92	1
3107A+	Sawmill silt loam, 0 to 2 percent slopes, frequently flooded, overwash	9.33	2.22	139	67	3w
198A	Elburn silt loam, 0 to 2 percent slopes	8.22	1.96	143	91	1
86B	Oско silt loam, 2 to 5 percent slopes	7.71	1.84	138	92	2e
17A	Keomah silt loam, 0 to 2 percent slopes	7.66	1.83	119	90	2w
36C2	Tama silt loam, 5 to 10 percent slopes, eroded	7.54	1.8	129	86	3e
W	Water	6.89	1.64	0	-	8w
257A	Clarksdale silt loam, 0 to 2 percent slopes	6.68	1.59	128	92	1
68A	Sable silty clay loam, 0 to 2 percent slopes	6.11	1.46	143	83	2w
279B	Rozetta silt loam, 2 to 5 percent slopes	6.1	1.45	118	87	2e
898F2	Hickory-Sylvan complex, 18 to 35 percent slopes, eroded	4.99	1.19	69	17	6e
279C2	Rozetta silt loam, 5 to 10 percent slopes, eroded	4.08	0.97	112	82	3e
243C2	St. Charles silt loam, 5 to 10 percent slopes, eroded	4.04	0.96	113	84	3e
705A	Buckhart silt loam, 0 to 2 percent slopes	2.69	0.64	142	96	1
861D2	Princeton-Bloomfield fine sands, 7 to 15 percent slopes, eroded	1.25	0.3	87	64	4e
3077A	Huntsville silt loam, 0 to 2 percent slopes, frequently flooded	1.16	0.28	143	92	3w
279D2	Rozetta silt loam, 10 to 18 percent slopes, eroded	0.31	0.07	104	77	3e
TOTALS		419.55(*)	100%	133.22	76.6	2.44









(*) Total acres may differ in the second decimal compared to the sum of each acreage soil. This is due to a round error because we only show the acres of each soil with two decimal.

Capability Legend

Increased Limitations and Hazards

Decreased Adaptability and Freedom of Choice Users

Land, Capability

								
	1	2	3	4	5	6	7	8
'Wild Life'	•	•	•	•	•	•	•	•
Forestry	•	•	•	•	•	•	•	
Limited	•	•	•	•	•	•	•	
Moderate	•	•	•	•	•	•		
Intense	•	•	•	•	•			
Limited	•	•	•	•				
Moderate	•	•	•					
Intense	•	•						
Very Intense	•							

Grazing Cultivation

(c) climatic limitations (e) susceptibility to erosion

(s) soil limitations within the rooting zone (w) excess of water

