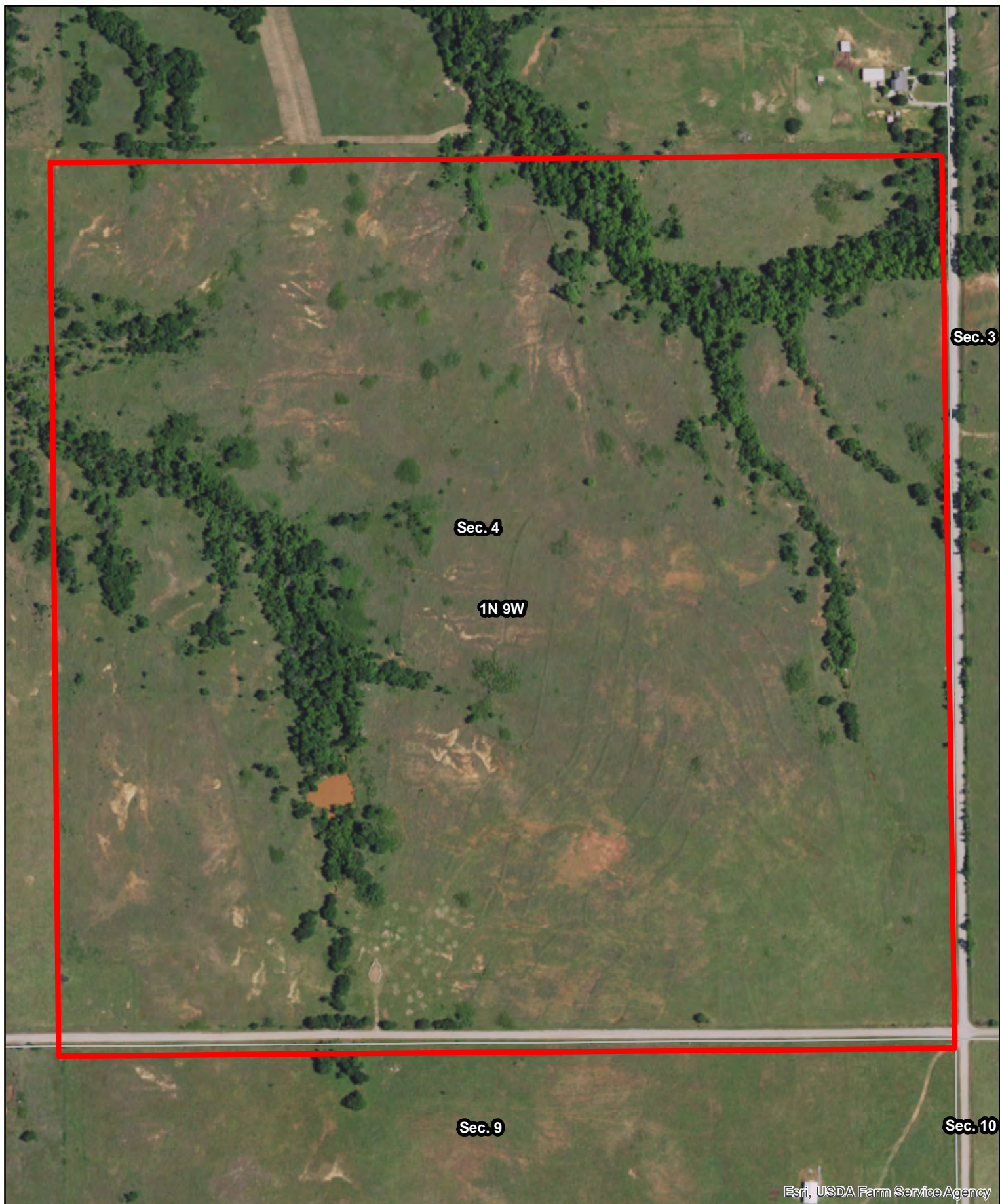


**Comanche County, Oklahoma**

Latitude: 34.5372°N  
 Longitude: -98.0425°W  
 Imagery Source: USDA NAIP  
 Soil Data Source: USDA NRCS  
 Boundaries Are Approximate





Sec. 3

Sec. 4

1N 9W

Sec. 9

Sec. 10

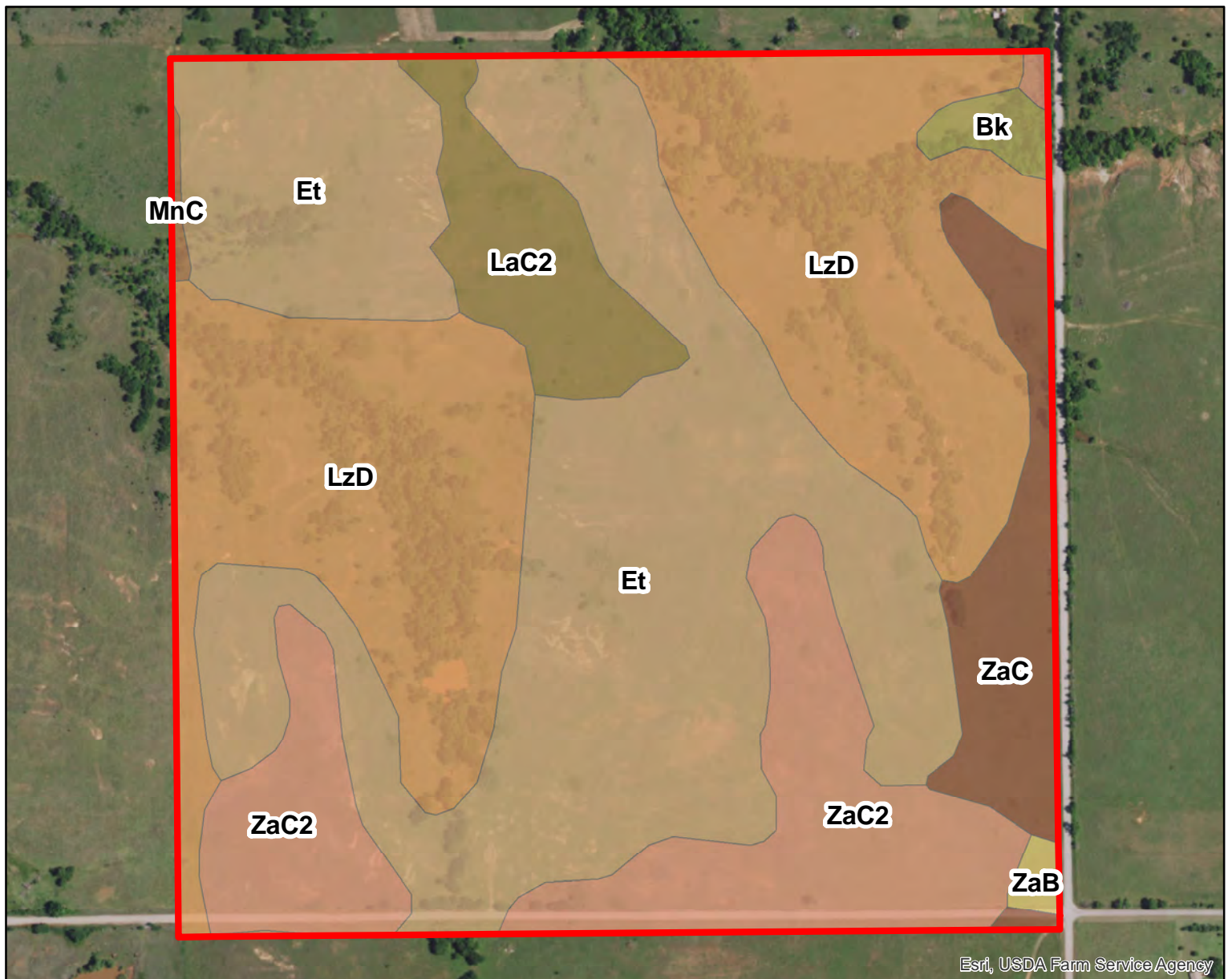
Esri, USDA Farm Service Agency



Comanche County, Oklahoma

Latitude: 34.5831°N  
Longitude: -98.1465°W  
Imagery Source: USDA NAIP  
Soil Data Source: USDA NRCS  
Boundaries Are Approximate





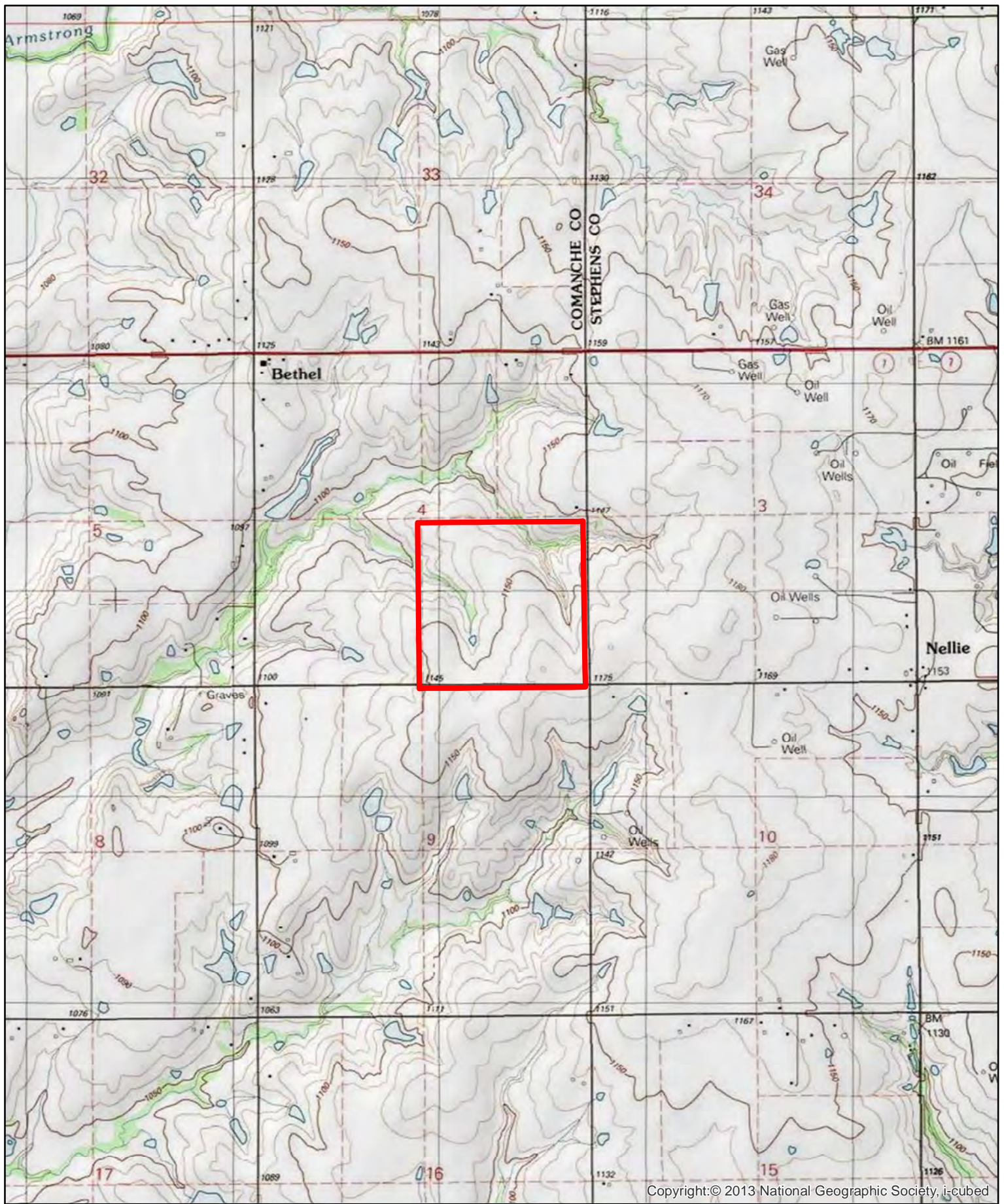
MAP SYMBOL	NAME	NON IRR LCC	ACRES
Et	Zaneis and Stephenville soils, 2 to 8 percent slopes, severely eroded	Vle	63.0
LzD	Lucien-Grainola-Zaneis complex, 5 to 12 percent slopes	Vle	53.0
ZaC2	Zaneis loam, 3 to 5 percent slopes, eroded	Ille	23.7
ZaC	Zaneis loam, 3 to 5 percent slopes	Ile	9.4
LaC2	Lawton loam, 3 to 5 percent slopes, eroded	Ille	8.2
Bk	Vernon-Clairemont complex, 0 to 12 percent slopes	Vle	1.6
ZaB	Zaneis loam, 1 to 3 percent slopes	Ile	0.7
MnC	Minco loam, 3 to 8 percent slopes	Ive	0.4
<b>TOTAL</b>			<b>160.0</b>



**Comanche County, Oklahoma**

Latitude: 34.5831°N  
 Longitude: -98.1465°W  
 Imagery Source: USDA NAIP  
 Soil Data Source: USDA NRCS  
 Boundaries Are Approximate





Comanche County, Oklahoma

Latitude: 34.5831°N  
Longitude: -98.1465°W  
Imagery Source: USDA NAIP  
Soil Data Source: USDA NRCS  
Boundaries Are Approximate