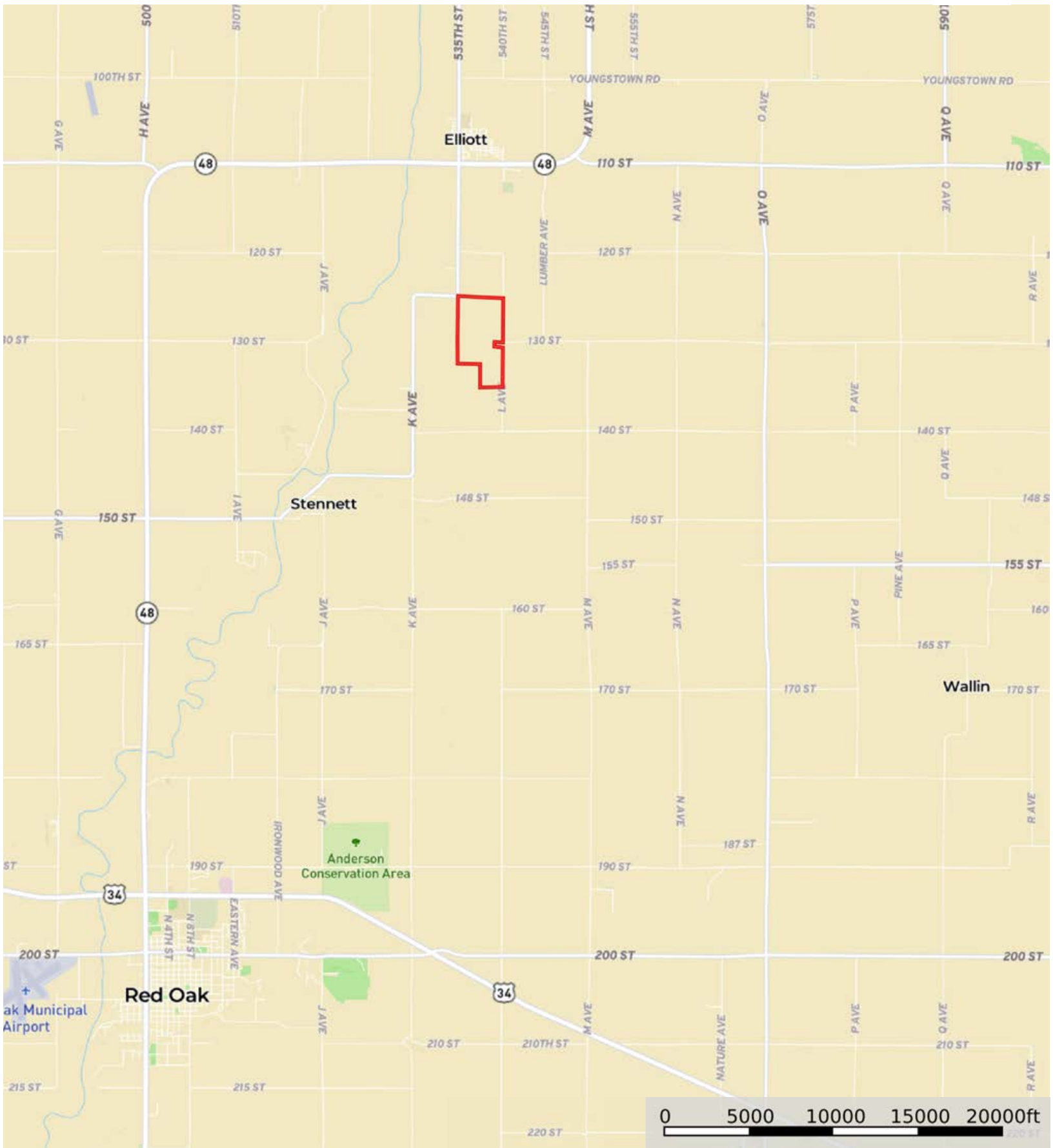


Cynthia Keiser & Pamela Merchanthouse

Montgomery County, Iowa, 274 AC +/-

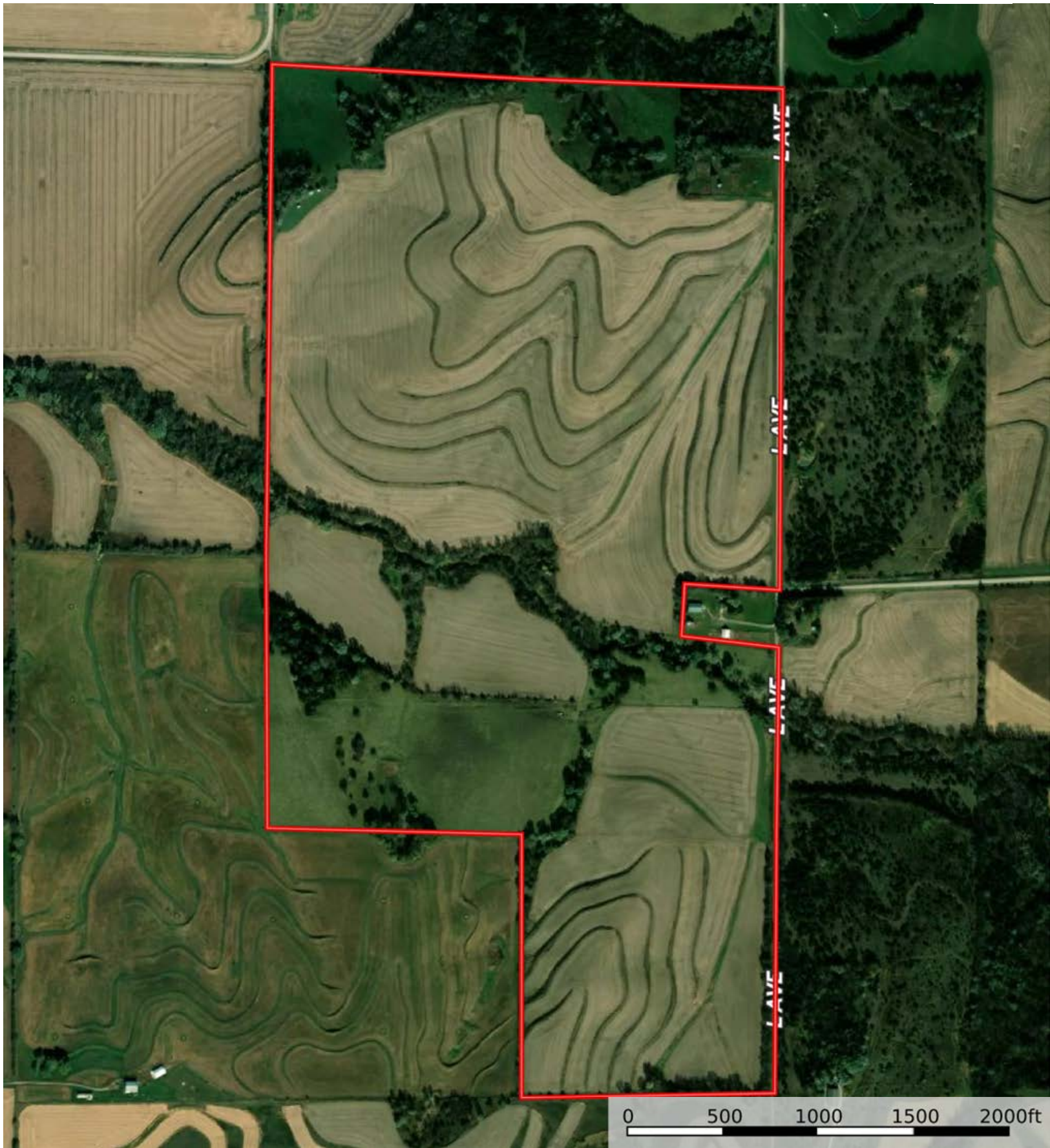


 Boundary



The information contained herein was obtained from sources deemed to be reliable. MapRight Services makes no warranties or guarantees as to the completeness or accuracy thereof.

Cynthia Keiser & Pamela Merchthouse
Montgomery County, Iowa, 274 AC +/-



 Boundary



 Boundary

|  Boundary 283.8 ac

SOIL CODE	SOIL DESCRIPTION	ACRES	%	CSR2	CPI	NCCPI	CAP
11B	Ackmore-Colo-Judson complex, 2 to 5 percent slopes	87.5	30.83	79.0	0	86	2w
99D2	Exira silty clay loam, 9 to 14 percent slopes, eroded	75.49	26.6	59.0	0	87	3e
Z24E2	Shelby clay loam, deep loess, 14 to 18 percent slopes, eroded	37.93	13.37	38.0	0	72	4e
9C2	Marshall silty clay loam, 5 to 9 percent slopes, eroded	31.46	11.09	87.0	0	92	3e
Z24D2	Shelby clay loam, deep loess, 9 to 14 percent slopes, eroded	18.39	6.48	52.0	0	76	3e
179F	Gara loam, 18 to 25 percent slopes	12.39	4.37	18.0	0	64	6e
Z24F	Shelby loam, deep loess, 18 to 25 percent slopes	10.29	3.63	24.0	0	60	6e
9C	Marshall silty clay loam, 5 to 9 percent slopes	7.8	2.75	89.0	0	96	3e
273C	Olmitz loam, 5 to 9 percent slopes	1.33	0.47	85.0	0	96	3e
Z8B	Judson silty clay loam, deep loess, 2 to 5 percent slopes	0.8	0.28	92.0	0	96	2e
273B	Olmitz loam, 2 to 5 percent slopes	0.39	0.14	89.0	0	97	2e
1299	Minden silty clay loam, benches, 0 to 2 percent slopes	0.03	0.01	96.0	0	99	1
TOTALS		283.8(*)	100%	63.04	-	82.88	3.06









(*) Total acres may differ in the second decimal compared to the sum of each acreage soil. This is due to a round error because we only show the acres of each soil with two decimal.

Capability Legend

Increased Limitations and Hazards

Decreased Adaptability and Freedom of Choice Users

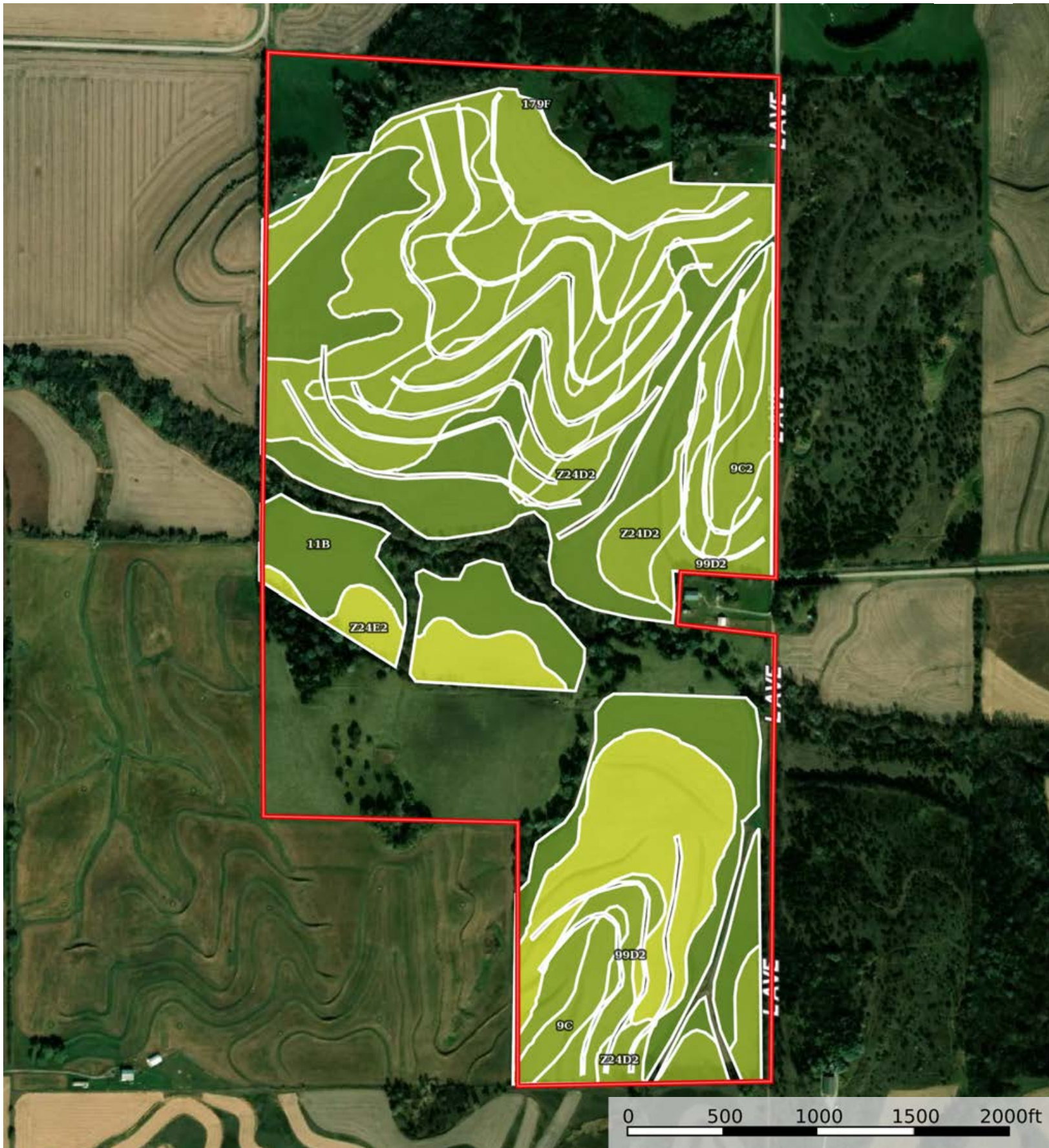
Land, Capability

								
	1	2	3	4	5	6	7	8
'Wild Life'	•	•	•	•	•	•	•	•
Forestry	•	•	•	•	•	•	•	
Limited	•	•	•	•	•	•	•	
Moderate	•	•	•	•	•	•		
Intense	•	•	•	•	•			
Limited	•	•	•	•				
Moderate	•	•	•					
Intense	•	•						
Very Intense	•							


Grazing Cultivation

(c) climatic limitations (e) susceptibility to erosion

(s) soil limitations within the rooting zone (w) excess of water



 Boundary

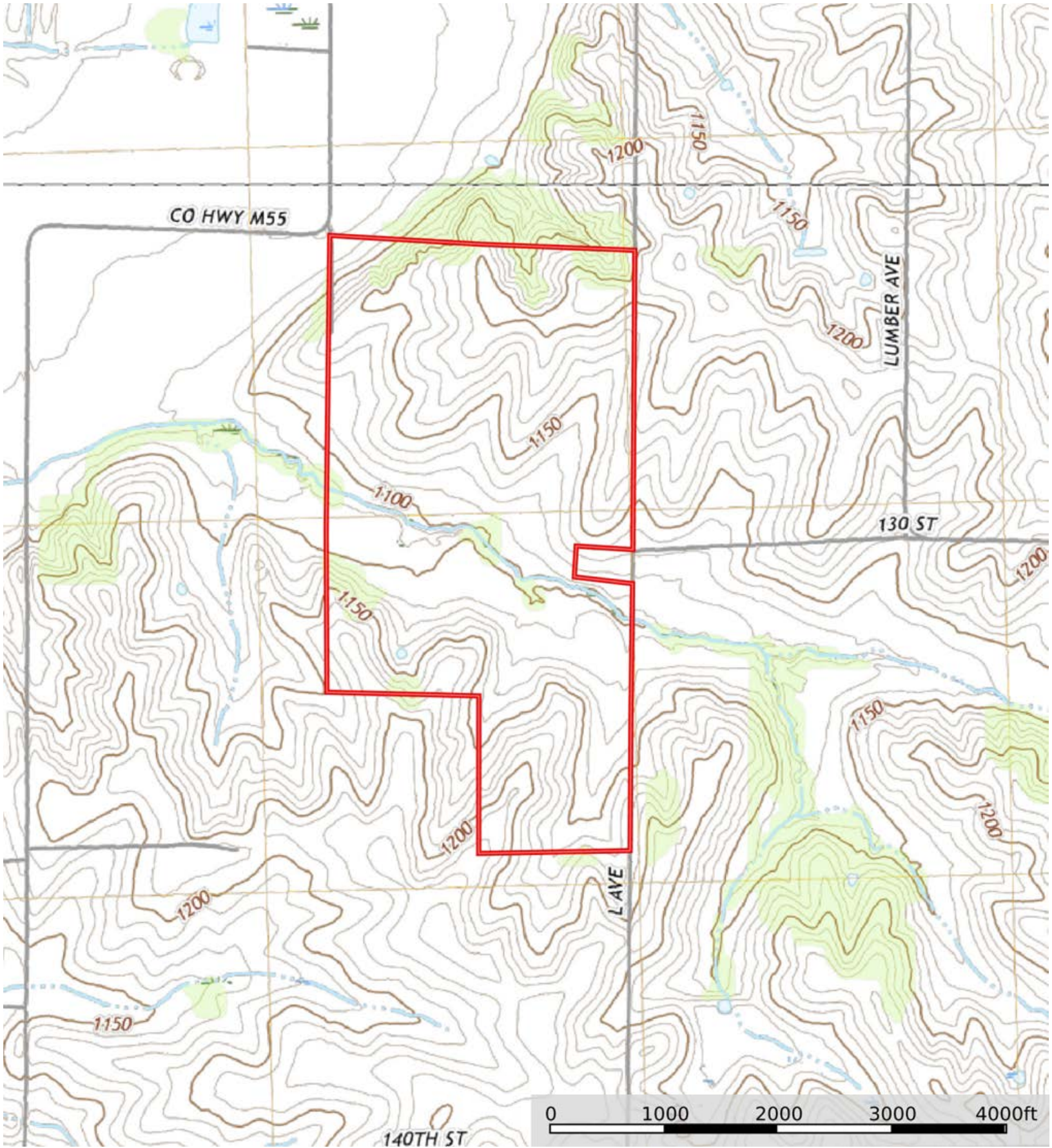
|  188.54 ac

SOIL CODE	SOIL DESCRIPTION	ACRES	%	CSR2	CPI	NCCPI	CAP
11B	Ackmore-Colo-Judson complex, 2 to 5 percent slopes	60.66	32.18	79.0	0	86	2w
99D2	Exira silty clay loam, 9 to 14 percent slopes, eroded	58.37	30.97	59.0	0	87	3e
Z24E2	Shelby clay loam, deep loess, 14 to 18 percent slopes, eroded	26.78	14.21	38.0	0	72	4e
9C2	Marshall silty clay loam, 5 to 9 percent slopes, eroded	23.45	12.44	87.0	0	92	3e
Z24D2	Shelby clay loam, deep loess, 9 to 14 percent slopes, eroded	15.71	8.34	52.0	0	76	3e
9C	Marshall silty clay loam, 5 to 9 percent slopes	3.53	1.87	89.0	0	96	3e
179F	Gara loam, 18 to 25 percent slopes	0.04	0.02	18.0	0	64	6e
TOTALS		188.48(*)	100%	65.93	-	84.44	2.82

(*) Total acres may differ in the second decimal compared to the sum of each acreage soil. This is due to a round error because we only show the acres of each soil with two decimal.



Cynthia Keiser & Pamela Merchanhouse
Montgomery County, Iowa, 274 AC +/-



 Boundary