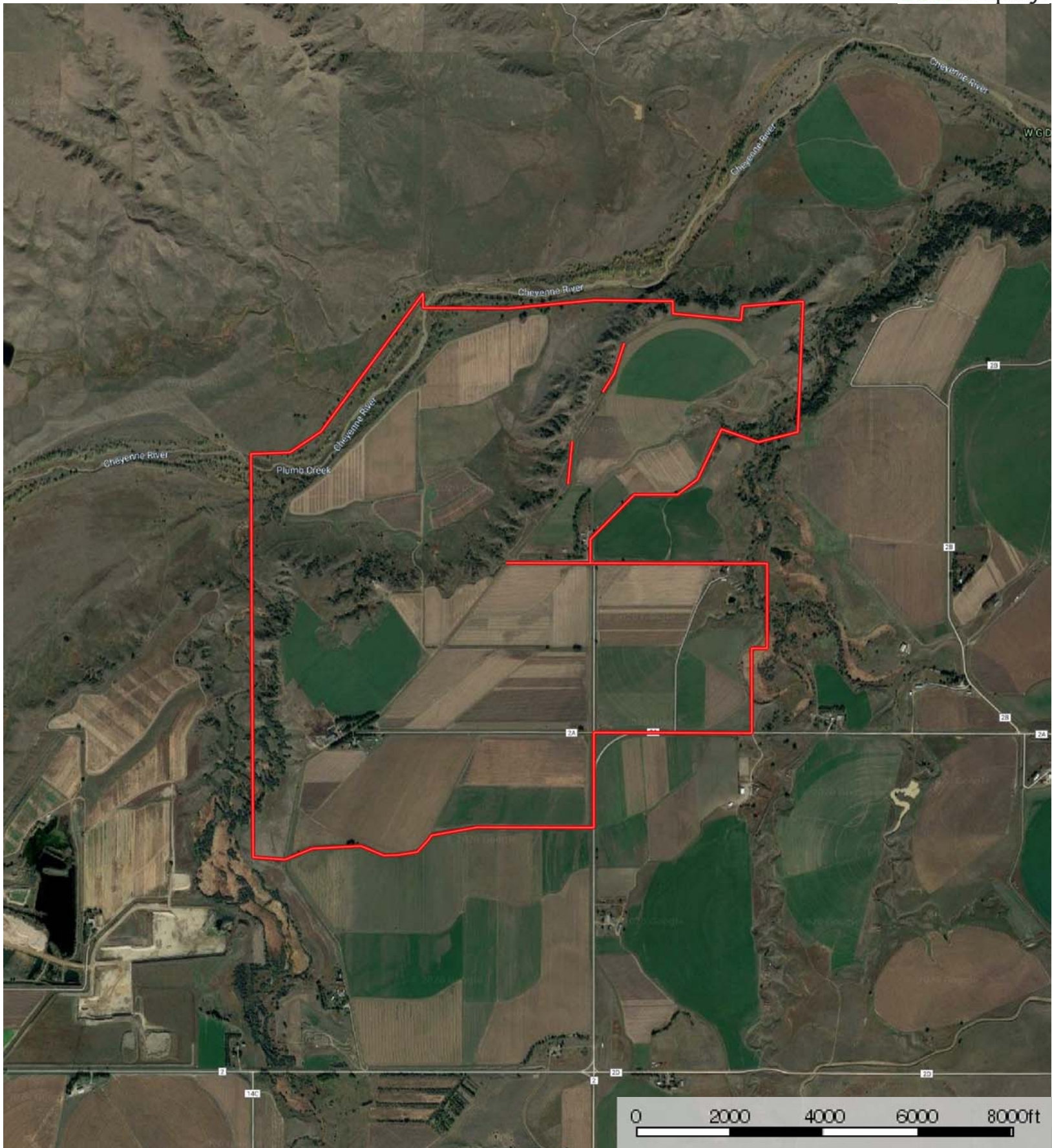
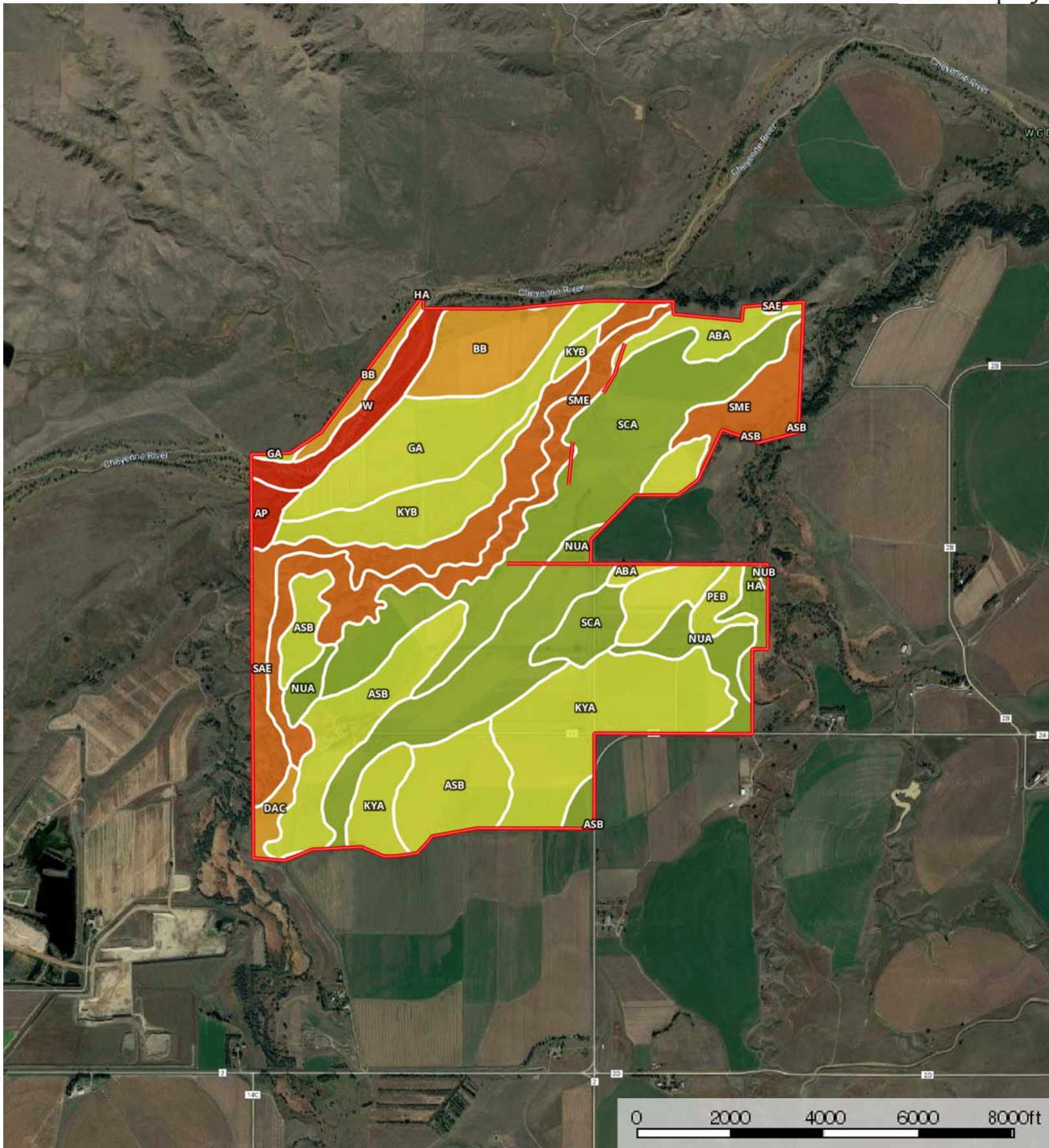
 Boundary



 Boundary



 Boundary

|  Boundary 1265.2 ac









SOIL CODE	SOIL DESCRIPTION	ACRES	%	CPI	CAP
SaE	Samsil clay, 15 to 40 percent slopes	94.2	7.44	4	7e
Bb	Bankard fine sandy loam	68.8	5.44	29	6e
AsB	Ascalon fine sandy loam, 0 to 6 percent slopes	185.8	14.68	75	4e
KyA	Kyle clay, 0 to 2 percent slopes	150.6	11.9	54	4e
AbA	Altvan loam, 0 to 2 percent slopes	28.7	2.27	55	4s
ScA	Satanta loam, 0 to 2 percent slopes	211.7	16.73	83	3c
NuA	Nunn clay loam, 0 to 2 percent slopes	147.2	11.64	87	3s
SmE	Schamber-Eckley complex, 9 to 40 percent slopes	126.9	10.03	5	7s
Ap	Aquolls, nearly level	11.1	0.88	5	8w
NuB	Nunn clay loam, 2 to 6 percent slopes	0.9	0.07	81	3e
Ha	Haverson loam, 0 to 2 percent slopes, rarely flooded	13.4	1.06	81	3c
PeB	Pierre clay, 2 to 6 percent slopes	13.0	1.03	29	4e
KyB	Kyle clay, 2 to 6 percent slopes	62.9	4.97	51	4e
Ga	Glenberg fine sandy loam	100.9	7.98	40	4e
DaC	Dailey fine sand, 6 to 12 percent slopes	10.7	0.85	11	6e
W	Water	38.2	3.02	0	8
TOTALS		1265.2	100%	52.16	4.51

Capability Legend

Increased Limitations and Hazards

Decreased Adaptability and Freedom of Choice Users

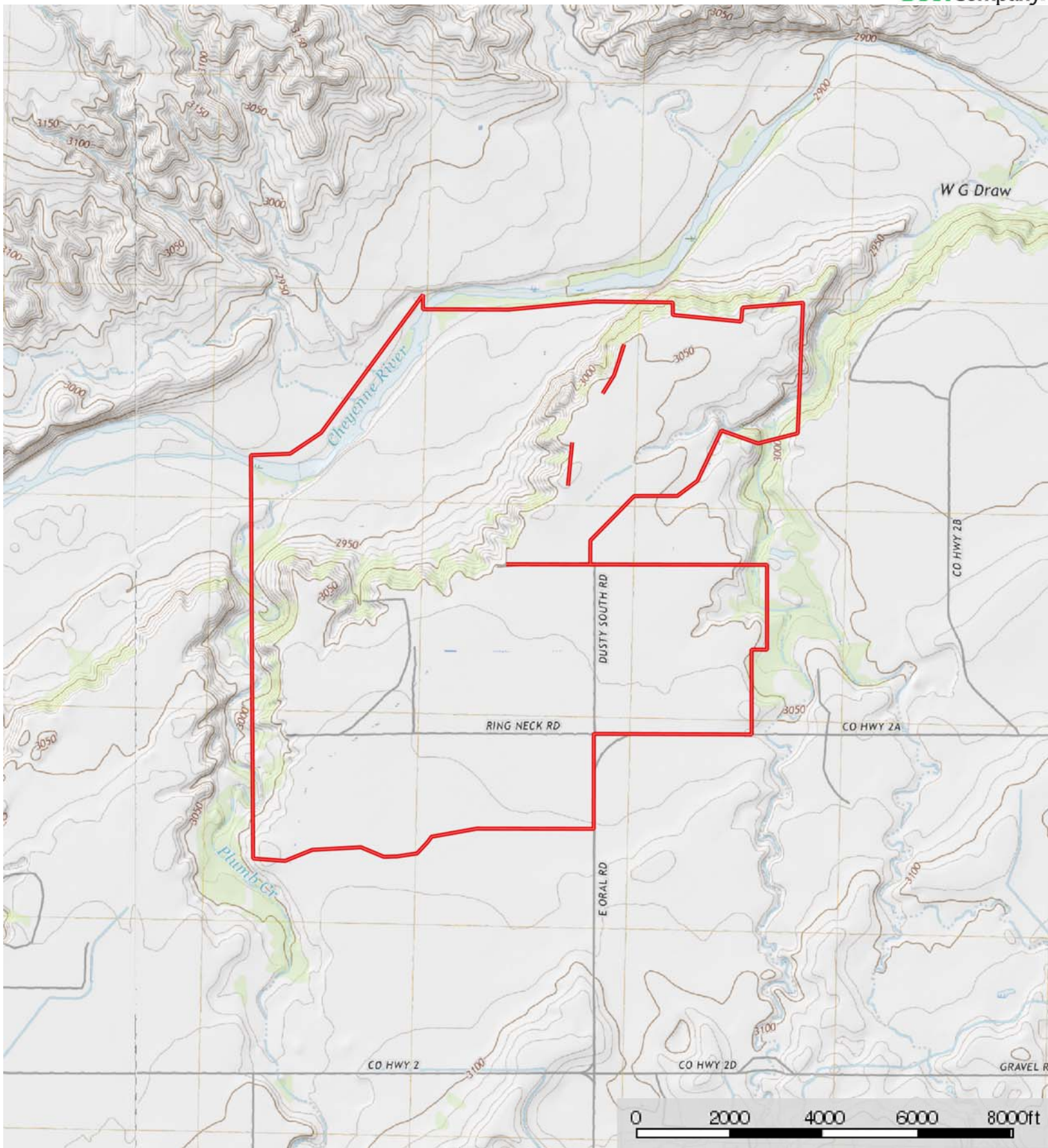
Land, Capability

								
	1	2	3	4	5	6	7	8
'Wild Life'	•	•	•	•	•	•	•	•
Forestry	•	•	•	•	•	•	•	
Limited	•	•	•	•	•	•	•	
Moderate	•	•	•	•	•	•		
Intense	•	•	•	•	•			
Limited	•	•	•	•				
Moderate	•	•	•					
Intense	•	•						
Very Intense	•							

Grazing Cultivation

(c) climatic limitations (e) susceptibility to erosion

(s) soil limitations within the rooting zone (w) excess of water



 Boundary