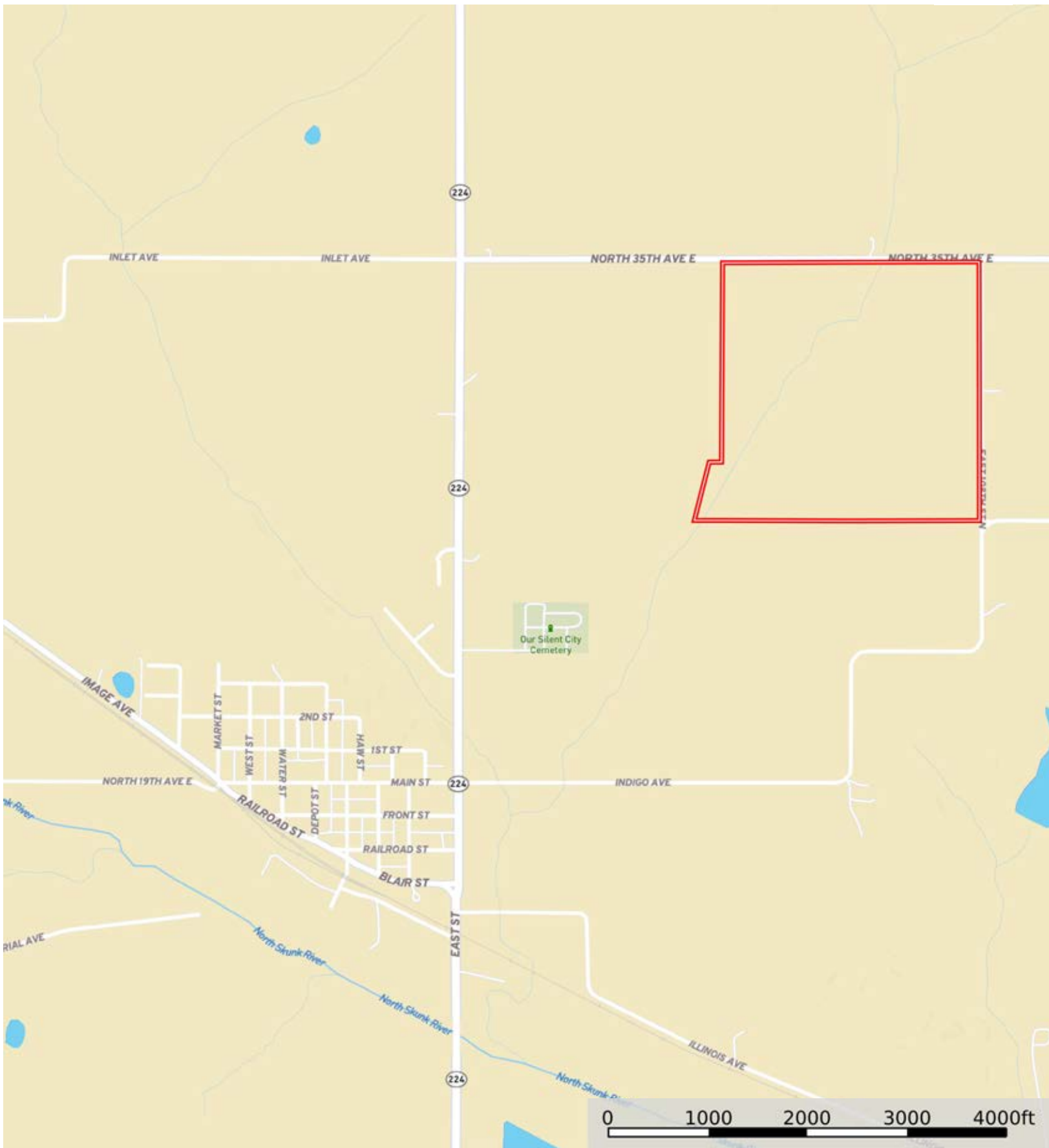



Daniel & Kristine Jensen Living Trust


Jasper County, Iowa, 158.64 AC +/-




 Boundary

Daniel & Kristine Jensen Living Trust
Jasper County, Iowa, 158.64 AC +/-



 Boundary



 Boundary

0 200 400 600 800ft

|  Boundary 158.07 ac

SOIL CODE	SOIL DESCRIPTION	ACRES	%	CSR2	CPI	NCCPI	CAP
179F2	Gara loam, 18 to 25 percent slopes, moderately eroded	31.07	19.65	16.0	0	57	7e
430	Ackmore silt loam, 0 to 2 percent slopes, occasionally flooded	30.06	19.02	70.0	0	91	2w
M162C2	Downs silt loam, till plain, 5 to 9 percent slopes, eroded	20.4	12.9	82.0	0	85	3e
5B	Ackmore-Colo complex, 2 to 5 percent slopes	18.09	11.44	77.0	0	88	2w
792D2	Armstrong loam, 9 to 14 percent slopes, moderately eroded	15.38	9.73	5.0	0	60	4e
M162D2	Downs silt loam, till plain, 9 to 14 percent slopes, eroded	10.98	6.95	57.0	0	81	4e
273B	Olmitz loam, 2 to 5 percent slopes	8.52	5.39	89.0	0	94	2e
94D2	Caleb and mystic soils, 9 to 14 percent slopes, moderately eroded	8.04	5.09	31.0	0	71	4e
M163D3	Fayette silty clay loam, till plain, 9 to 14 percent slopes, severely eroded	5.63	3.56	41.0	0	74	4e
M162B	Downs silt loam, till plain, 2 to 5 percent slopes	4.44	2.81	90.0	0	91	2e
993E3	Gara-Armstrong complex, 14 to 18 percent slopes, severely eroded	3.12	1.97	24.0	0	62	6e
993E2	Gara-Armstrong loams, 14 to 18 percent slopes, moderately eroded	1.36	0.86	22.0	0	65	6e
M162E2	Downs silt loam, till plain, 14 to 18 percent slopes, eroded	0.95	0.6	45.0	0	77	4e
179E2	Gara loam, 14 to 18 percent slopes, moderately eroded	0.03	0.02	32.0	0	72	6e
TOTALS		158.07(*)	100%	51.6	-	77.14	3.74









(*) Total acres may differ in the second decimal compared to the sum of each acreage soil. This is due to a round error because we only show the acres of each soil with two decimal.

Capability Legend

Increased Limitations and Hazards

Decreased Adaptability and Freedom of Choice Users

Land, Capability

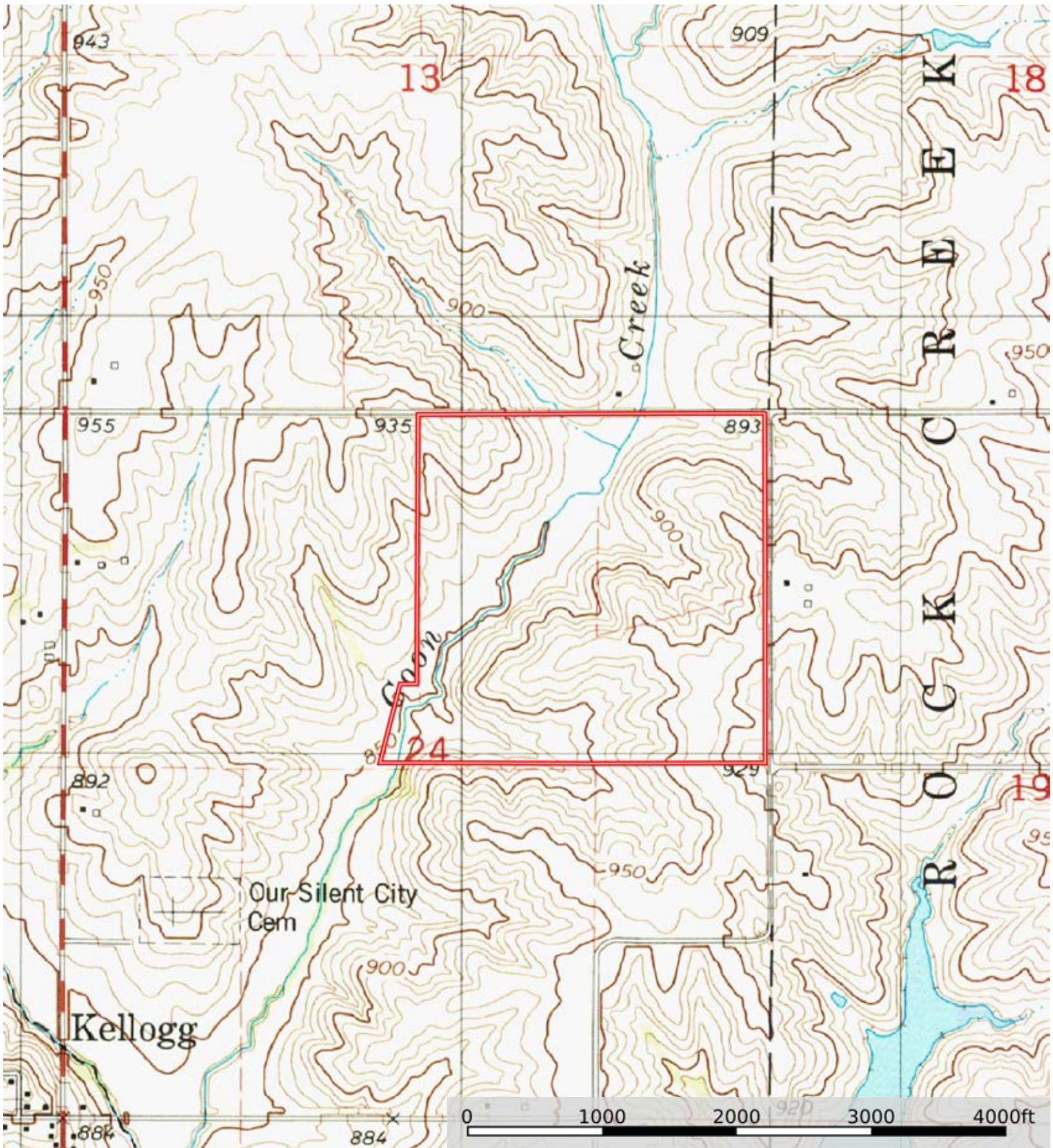
								
	1	2	3	4	5	6	7	8
'Wild Life'	•	•	•	•	•	•	•	•
Forestry	•	•	•	•	•	•	•	
Limited	•	•	•	•	•	•	•	
Moderate	•	•	•	•	•	•		
Intense	•	•	•	•	•			
Limited	•	•	•	•				
Moderate	•	•	•					
Intense	•	•						
Very Intense	•							


Grazing Cultivation

(c) climatic limitations (e) susceptibility to erosion

(s) soil limitations within the rooting zone (w) excess of water

Daniel & Kristine Jensen Living Trust
Jasper County, Iowa, 158.64 AC +/-



 Boundary