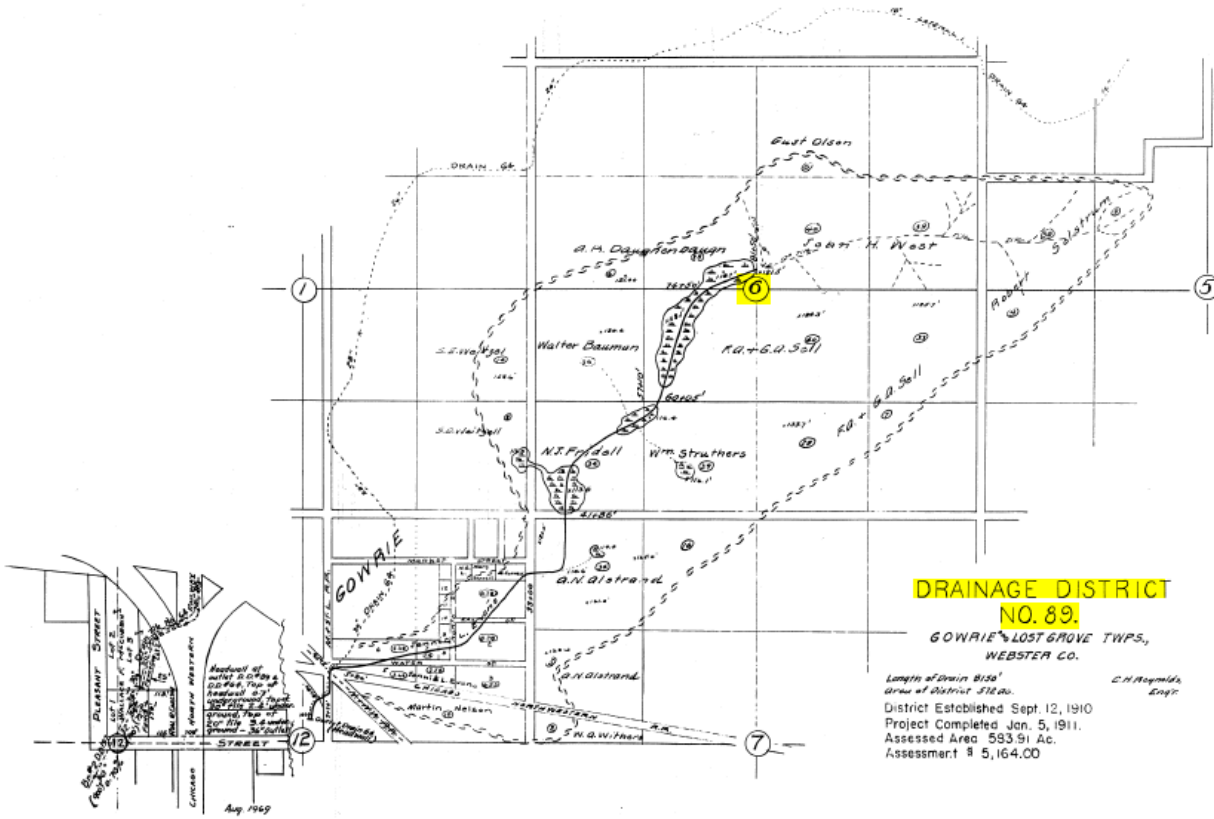


Blue = County Lines  
Pink = Known Private Lines w/ Direction of Flow  
Red = District Boundary Lines

All but the very Southeast portion of this property is in DD 89.  
 What is South of the red line is in DD 106.



I have compiled this data from available drainage records, and intended to show "as built" conditions, are correct to the best of my knowledge.

May 18, 1950 *Edwin J. Miller*  
 Engr.

District Established July 5, 1910  
 Project Completed Sept 13, 1912  
 Total Assessment \$ 24,525.34  
 Assessable Acres 1810

**DRAIN NO. 106**

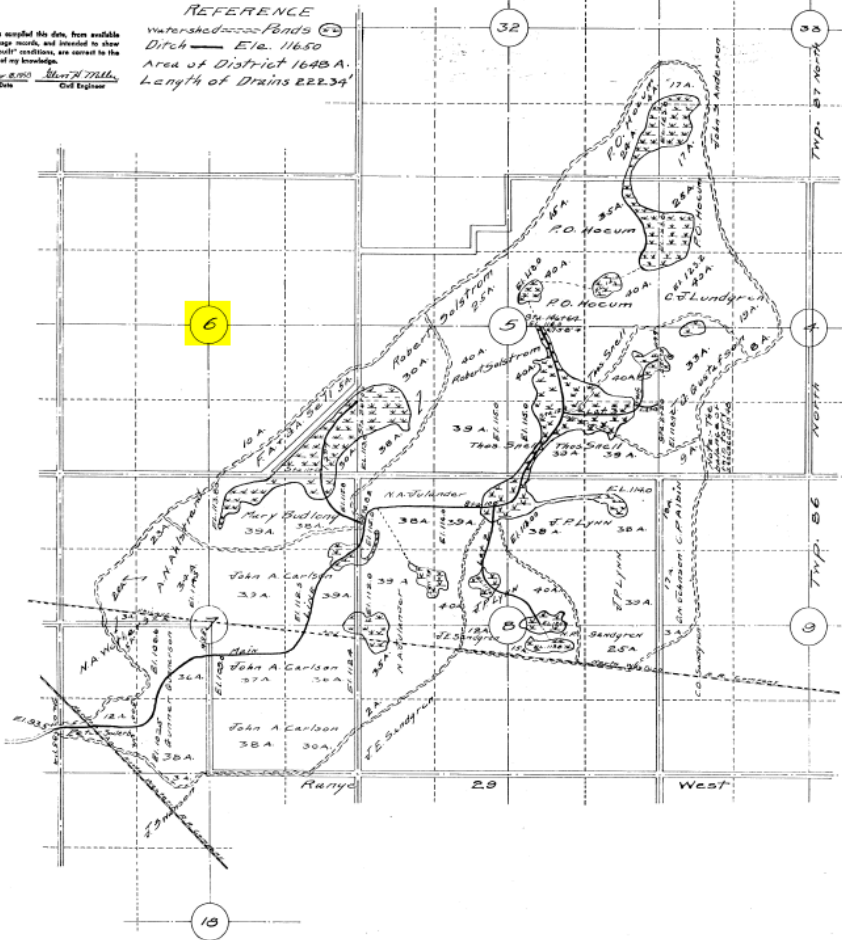
**WEBSTER COUNTY IA.**

J.B. Fossler Engr.

I have compiled this data from available drainage records, and intended to show "as built" conditions, are correct to the best of my knowledge.

May 8, 1950 *Edwin J. Miller*  
 Engr.

REFERENCE  
 Watershed - Buds  
 Ditch - Elev. 116.50  
 Area of District 164.8A  
 Length of Drains 222.34'



LATERAL 106A  
 1.00%  
 2.00%  
 3.00%  
 4.00%  
 5.00%  
 6.00%  
 7.00%  
 8.00%  
 9.00%  
 10.00%