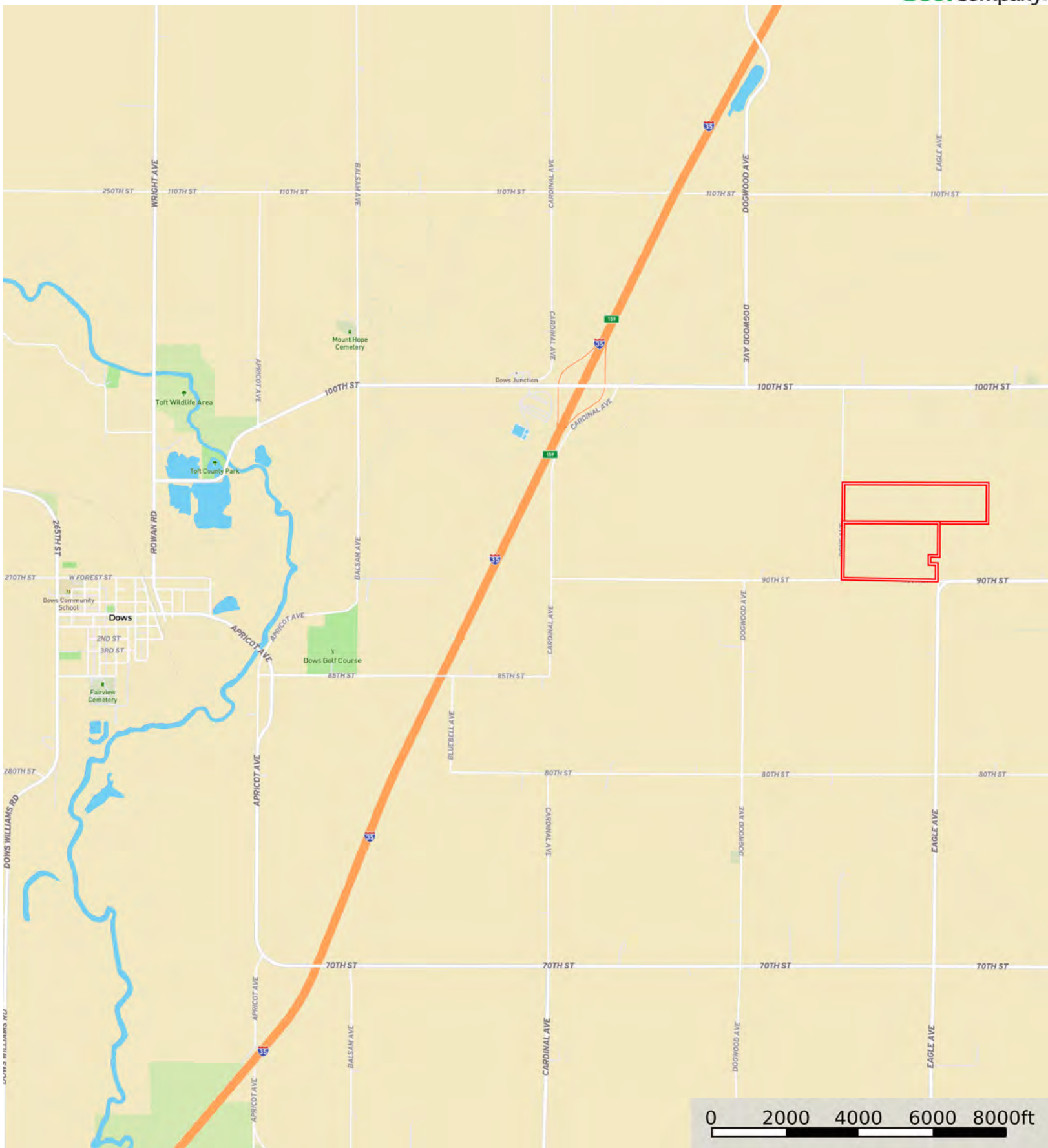


# Dwight and Marlys Rafferty Revocable Living Trust

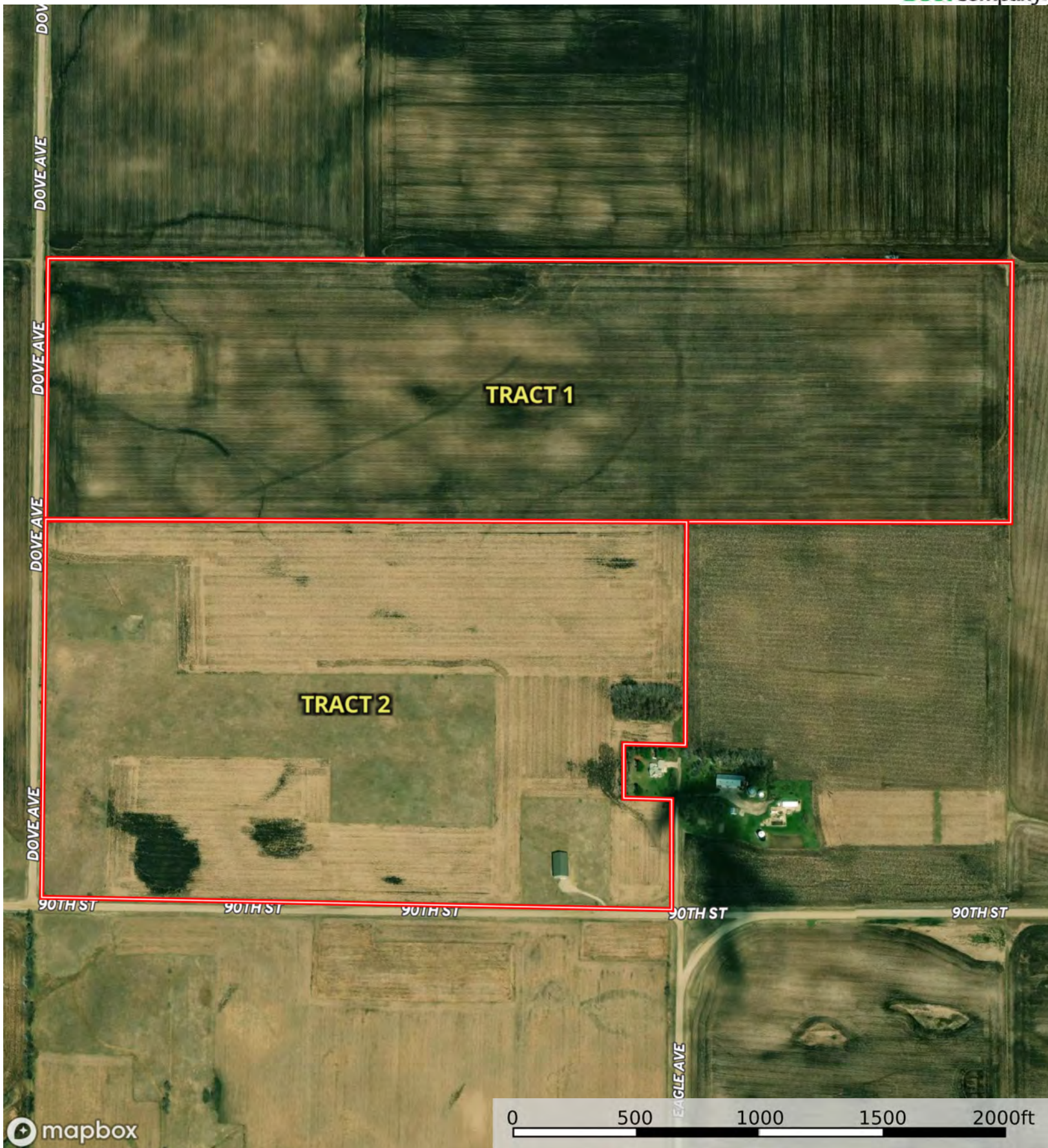
Franklin County, Iowa, 186.03 AC +/-



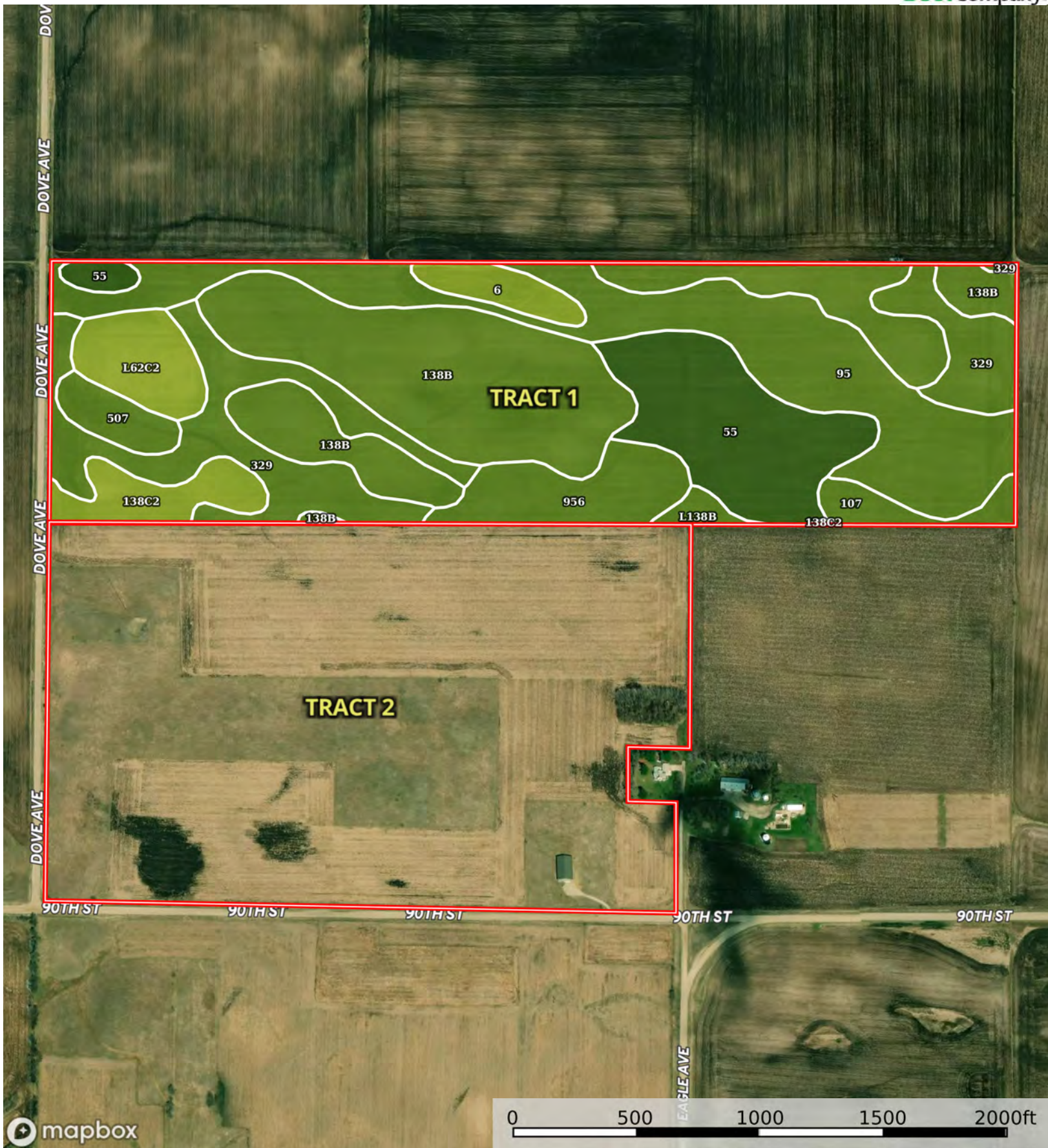
Boundary



The information contained herein was obtained from sources deemed to be reliable. Land id™ Services makes no warranties or guarantees as to the completeness or accuracy thereof.



Boundary



Boundary

| Boundary 95.84 ac

SOIL CODE	SOIL DESCRIPTION	ACRES	%	CSR2	CPI	NCCPI	CAP
138B	Clarion loam, 2 to 6 percent slopes	29.32	30.6	89.0	0	83	2e
95	Harps clay loam, 0 to 2 percent slopes	19.84	20.7	72.0	0	82	2w
329	Webster-Nicollet complex, 0 to 3 percent slopes	14.64	15.28	87.0	0	82	2w
55	Nicollet clay loam, 1 to 3 percent slopes	11.93	12.45	89.0	0	81	1
956	Harps-Okoboji complex, 0 to 2 percent slopes	5.46	5.7	69.0	0	80	2w
L62C2	Storden loam, Bemis moraine, 6 to 10 percent slopes, moderately eroded	4.02	4.19	64.0	0	67	3e
138C2	Clarion loam, 6 to 10 percent slopes, moderately eroded	3.61	3.77	83.0	0	69	3e
6	Okoboji silty clay loam, 0 to 1 percent slopes	2.16	2.25	59.0	0	76	3w
507	Canisteo clay loam, 0 to 2 percent slopes	2.12	2.21	84.0	0	82	2w
107	Webster clay loam, 0 to 2 percent slopes	1.97	2.06	86.0	0	83	2w
L138B	Clarion loam, Bemis moraine, 2 to 6 percent slopes	0.77	0.8	88.0	0	80	2e
TOTALS		95.84(*)	100%	81.91	-	80.83	1.98









(\*) Total acres may differ in the second decimal compared to the sum of each acreage soil. This is due to a round error because we only show the acres of each soil with two decimal.

## Capability Legend

Increased Limitations and Hazards

Decreased Adaptability and Freedom of Choice Users

Land, Capability

								
	1	2	3	4	5	6	7	8
'Wild Life'	•	•	•	•	•	•	•	•
Forestry	•	•	•	•	•	•	•	
Limited	•	•	•	•	•	•	•	
Moderate	•	•	•	•	•	•		
Intense	•	•	•	•	•			
Limited	•	•	•	•				
Moderate	•	•	•					
Intense	•	•						
Very Intense	•							

### Grazing Cultivation

(c) climatic limitations (e) susceptibility to erosion

(s) soil limitations within the rooting zone (w) excess of water



Boundary

| Boundary 59.35 ac

SOIL CODE	SOIL DESCRIPTION	ACRES	%	CSR2	CPI	NCCPI	CAP
138B	Clarion loam, 2 to 6 percent slopes	17.76	29.91	89.0	0	83	2e
329	Webster-Nicollet complex, 0 to 3 percent slopes	14.38	24.22	87.0	0	82	2w
956	Harps-Okoboji complex, 0 to 2 percent slopes	5.68	9.57	69.0	0	80	2w
638C2	Clarion-Storden complex, 6 to 10 percent slopes, moderately eroded	5.33	8.98	75.0	0	68	3e
138C2	Clarion loam, 6 to 10 percent slopes, moderately eroded	5.28	8.89	83.0	0	69	3e
L138B	Clarion loam, Bemis moraine, 2 to 6 percent slopes	5.19	8.74	88.0	0	80	2e
6	Okoboji silty clay loam, 0 to 1 percent slopes	2.65	4.46	59.0	0	76	3w
95	Harps clay loam, 0 to 2 percent slopes	1.59	2.68	72.0	0	82	2w
62D2	Storden loam, 10 to 16 percent slopes, moderately eroded	1.32	2.22	41.0	0	64	4e
L638D2	Omsrud-Storden complex, Bemis moraine, 10 to 16 percent slopes, moderately eroded	0.17	0.29	53.0	0	63	4e
TOTALS		59.35(*)	100%	81.72	-	78.76	2.27









(\*) Total acres may differ in the second decimal compared to the sum of each acreage soil. This is due to a round error because we only show the acres of each soil with two decimal.

## Capability Legend

Increased Limitations and Hazards

Decreased Adaptability and Freedom of Choice Users

Land, Capability

								
	1	2	3	4	5	6	7	8
'Wild Life'	•	•	•	•	•	•	•	•
Forestry	•	•	•	•	•	•	•	
Limited	•	•	•	•	•	•	•	
Moderate	•	•	•	•	•	•		
Intense	•	•	•	•	•			
Limited	•	•	•	•				
Moderate	•	•	•					
Intense	•	•						
Very Intense	•							

### Grazing Cultivation

(c) climatic limitations (e) susceptibility to erosion

(s) soil limitations within the rooting zone (w) excess of water



