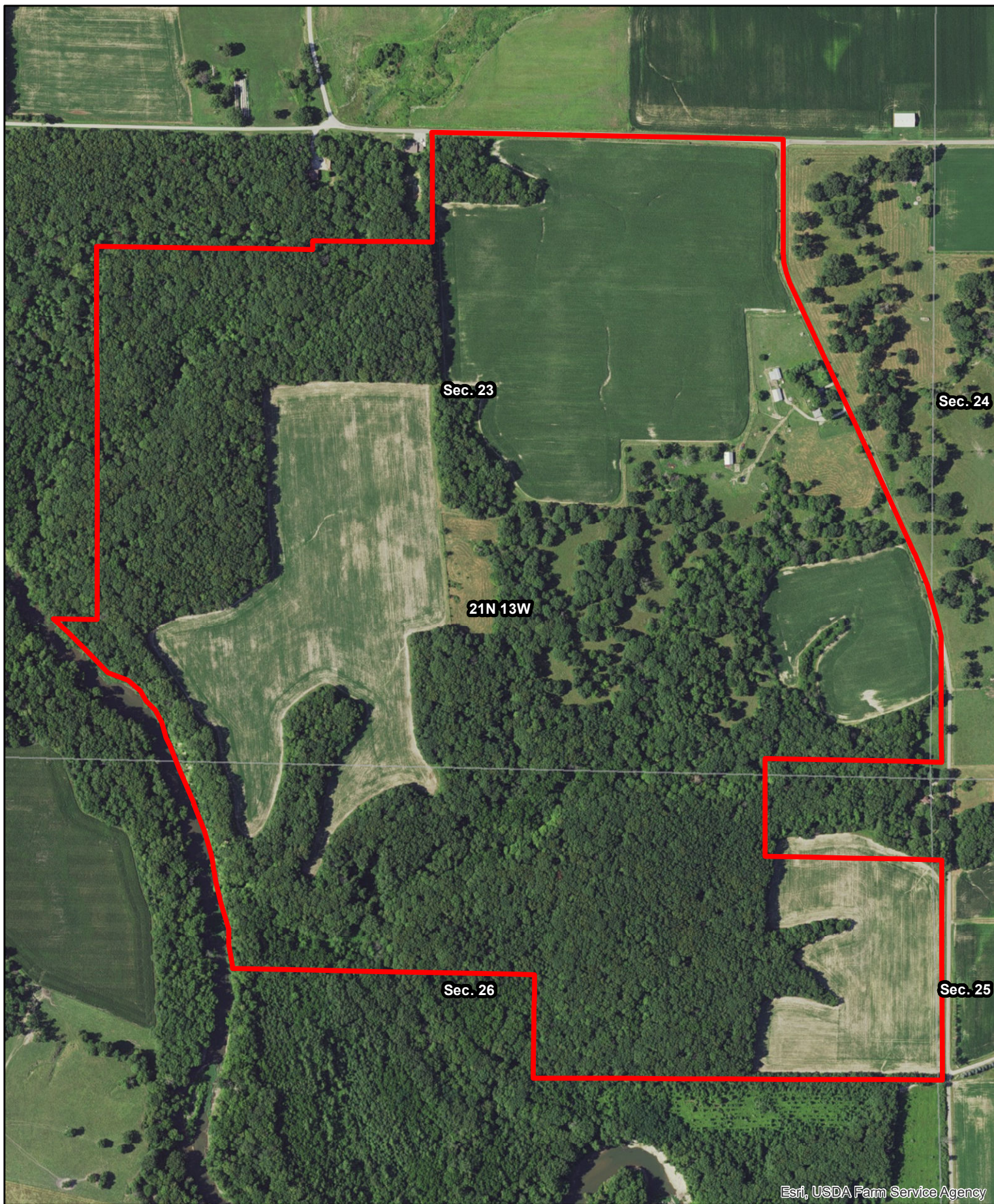


**Edginton  
Vermilion County, Illinois**

Latitude: 40.1729°N  
 Longitude: -87.6810°W  
 Imagery Source: USDA NAIP  
 Soil Data Source: USDA NRCS  
 Boundaries Are Approximate



Sec. 23

Sec. 24

21N 13W

Sec. 26

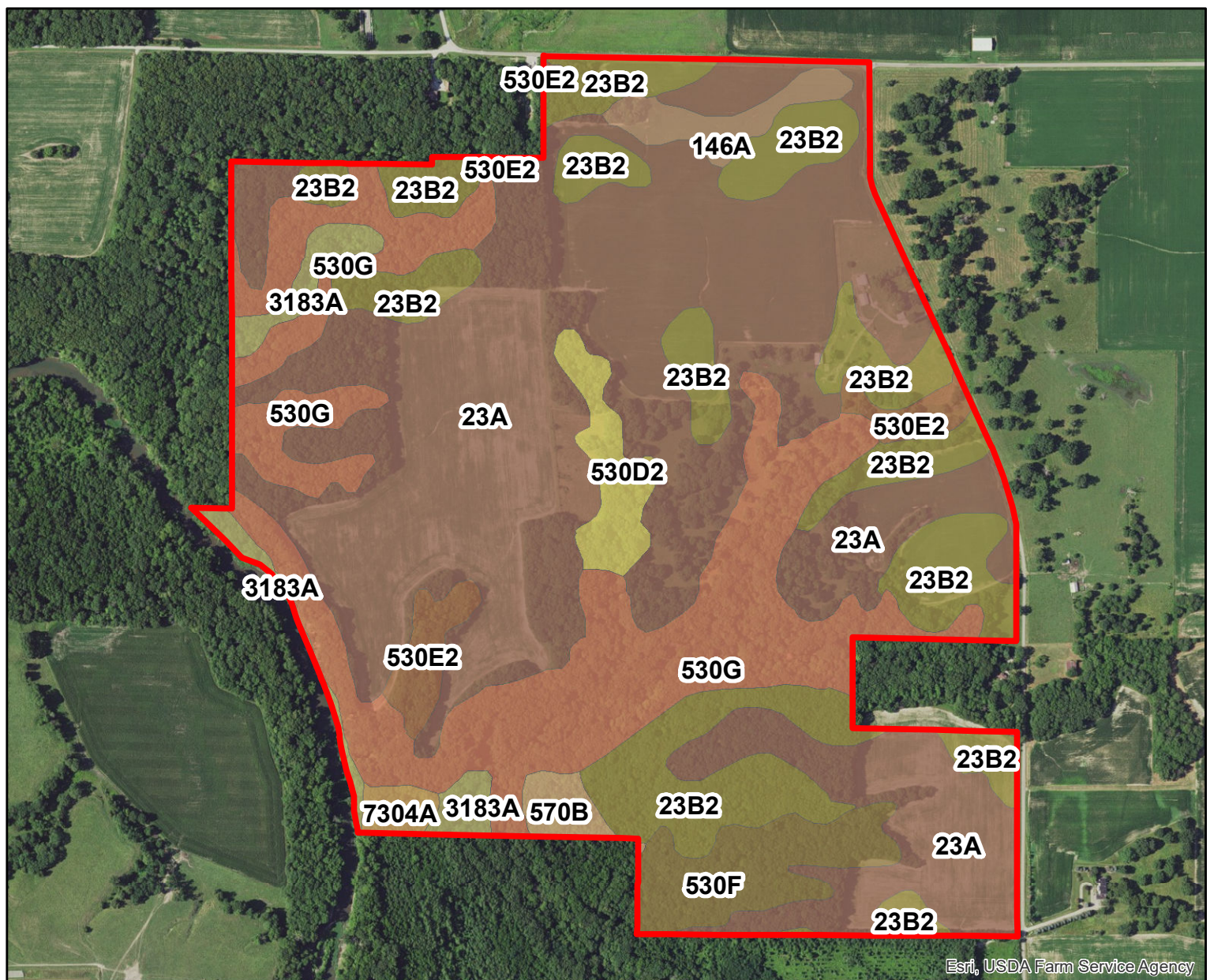
Sec. 25

Esri, USDA Farm Service Agency



**Edgington**  
**Vermilion County, Illinois**

Latitude: 40.2576°N  
Longitude: -87.7826°W  
Imagery Source: USDA NAIP  
Soil Data Source: USDA NRCS  
Boundaries Are Approximate



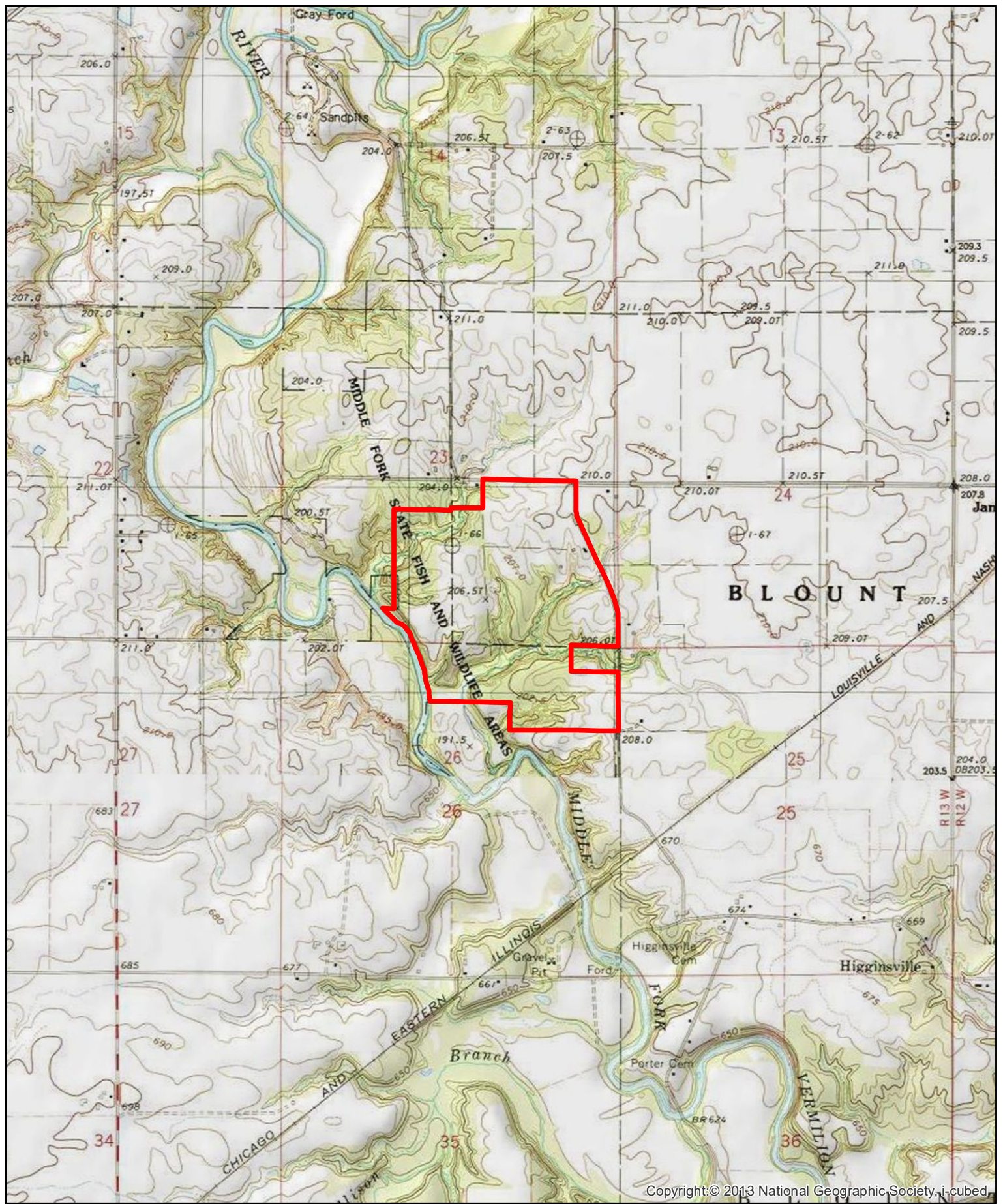
Esri, USDA Farm Service Agency

MAP SYMBOL	SOIL NAME	PRODUCTIVITY INDEX	CORN YIELD	BEANS YIELD	ACRES
23A	Blount silt loam, Lake Michigan Lobe, 0 to 2 percent slopes	105	139	47	125.9
530G	Ozaukee silt loam, 30 to 70 percent slopes	52	72	23	49.8
23B2	Blount silt loam, Lake Michigan Lobe, 2 to 4 percent slopes, eroded	100	132	45	46.0
530F	Ozaukee silt loam, 20 to 30 percent slopes	87	120	38	9.4
530E2	Ozaukee silt loam, 12 to 20 percent slopes, eroded	89	123	39	5.9
3183A	Shaffton loam, 0 to 2 percent slopes, frequently flooded	116	155	51	5.6
530D2	Ozaukee silt loam, 6 to 12 percent slopes, eroded	101	140	44	5.2
146A	Elliott silt loam, 0 to 2 percent slopes	125	168	55	4.0
570B	Martinsville silt loam, 2 to 5 percent slopes	113	153	49	2.2
7304A	Landes fine sandy loam, 0 to 2 percent slopes, rarely flooded	100	135	45	1.6
<b>Total</b>		<b>93.3</b>	<b>124.5</b>	<b>41.6</b>	<b>255.8</b>



**Edgington**  
**Vermilion County, Illinois**

Latitude: 40.2576°N  
Longitude: -87.7826°W  
Imagery Source: USDA NAIP  
Soil Data Source: USDA NRCS  
Boundaries Are Approximate



**Edginton  
Vermilion County, Illinois**

Latitude: 40.2576°N  
Longitude: -87.7826°W  
Imagery Source: USDA NAIP  
Soil Data Source: USDA NRCS  
Boundaries Are Approximate