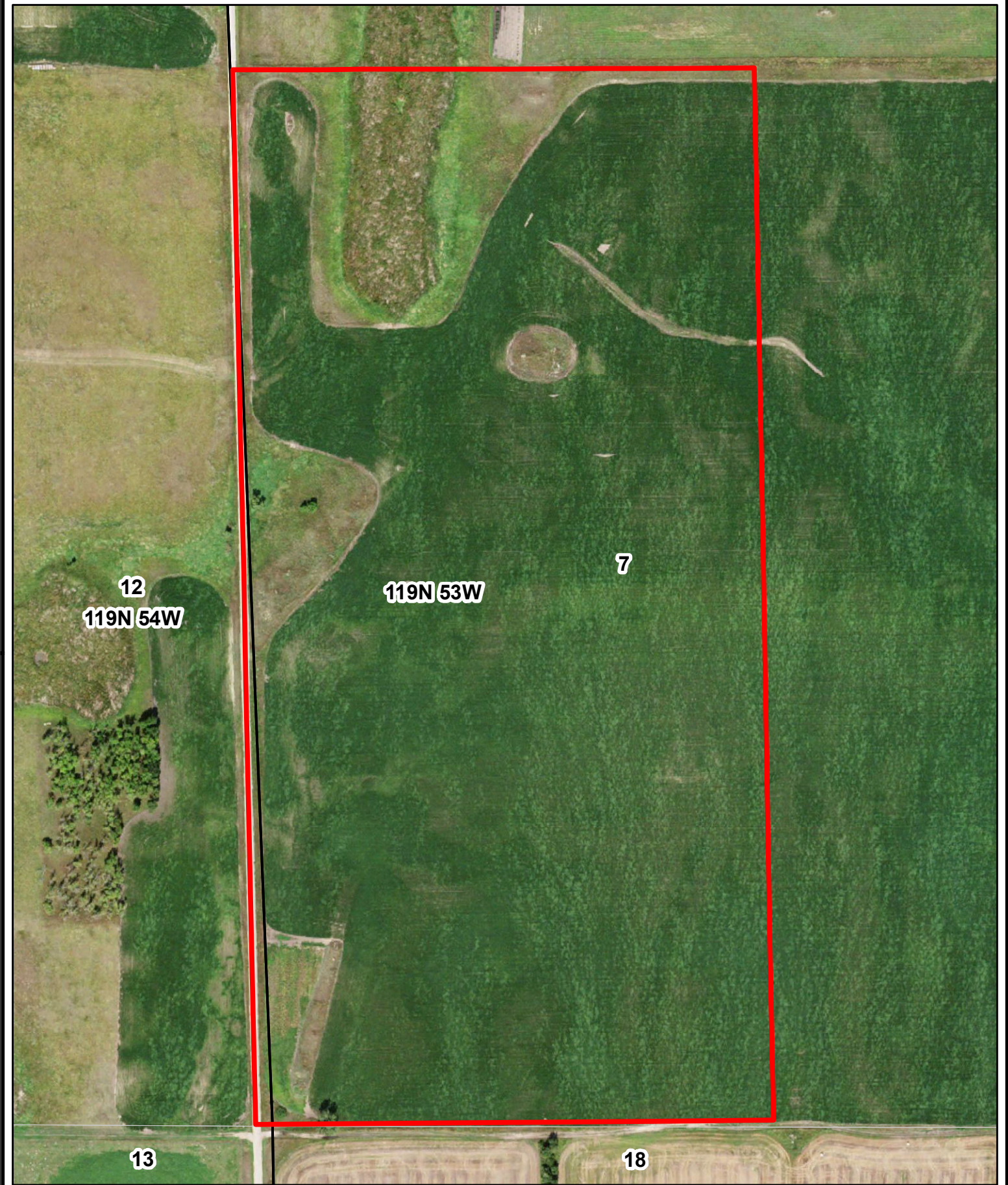


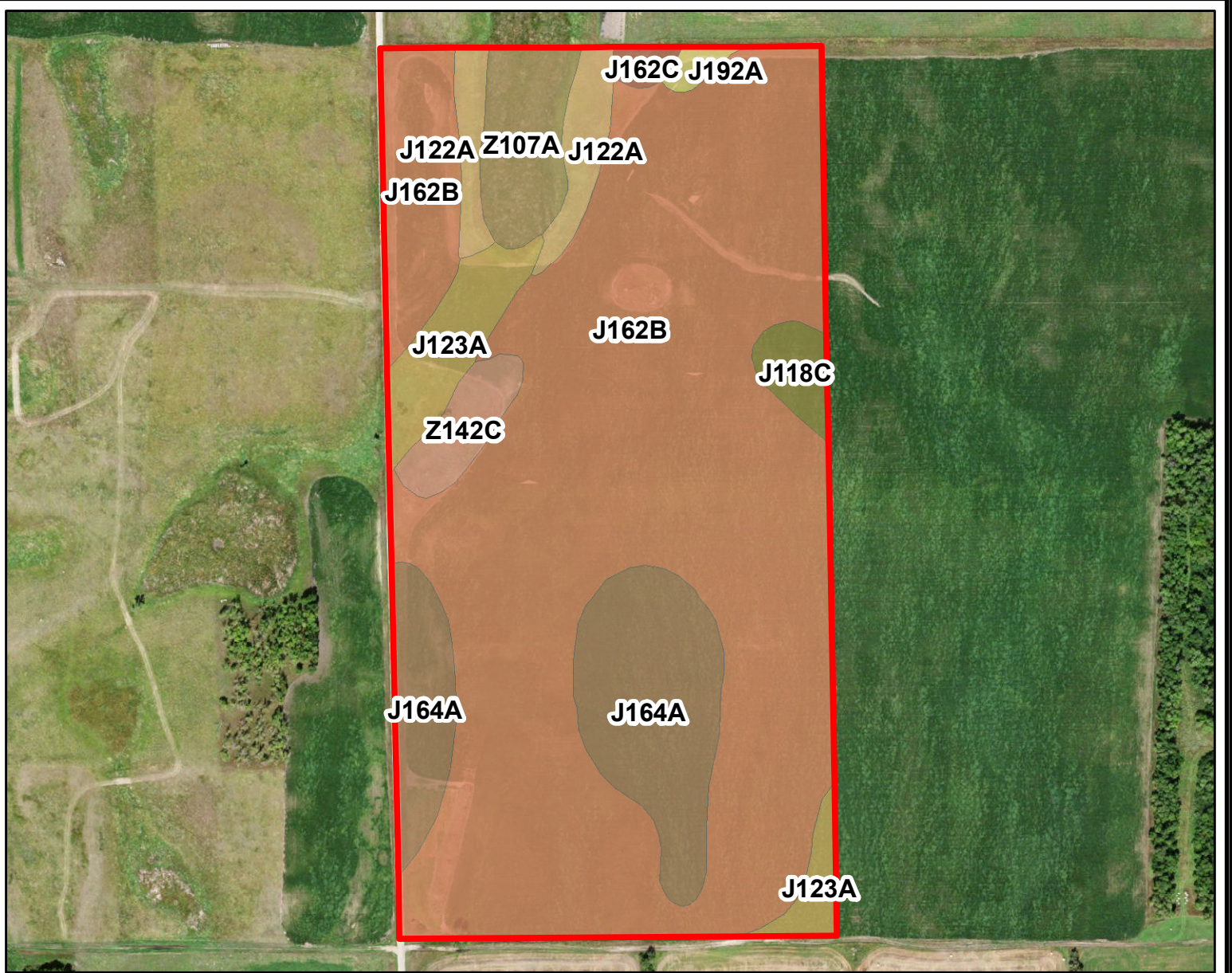
Erickson
Codington County, South Dakota

Latitude: 45.0956°N
Longitude: -97.2757°W
Imagery Source: USDA NAIP
Soil Data Source: USDA NRCS
Boundaries Are Approximate



**Erickson
Codington County, South Dakota**

Latitude: 45.1259°N
Longitude: -97.2467°W
Imagery Source: USDA NAIP
Soil Data Source: USDA NRCS
Boundaries Are Approximate

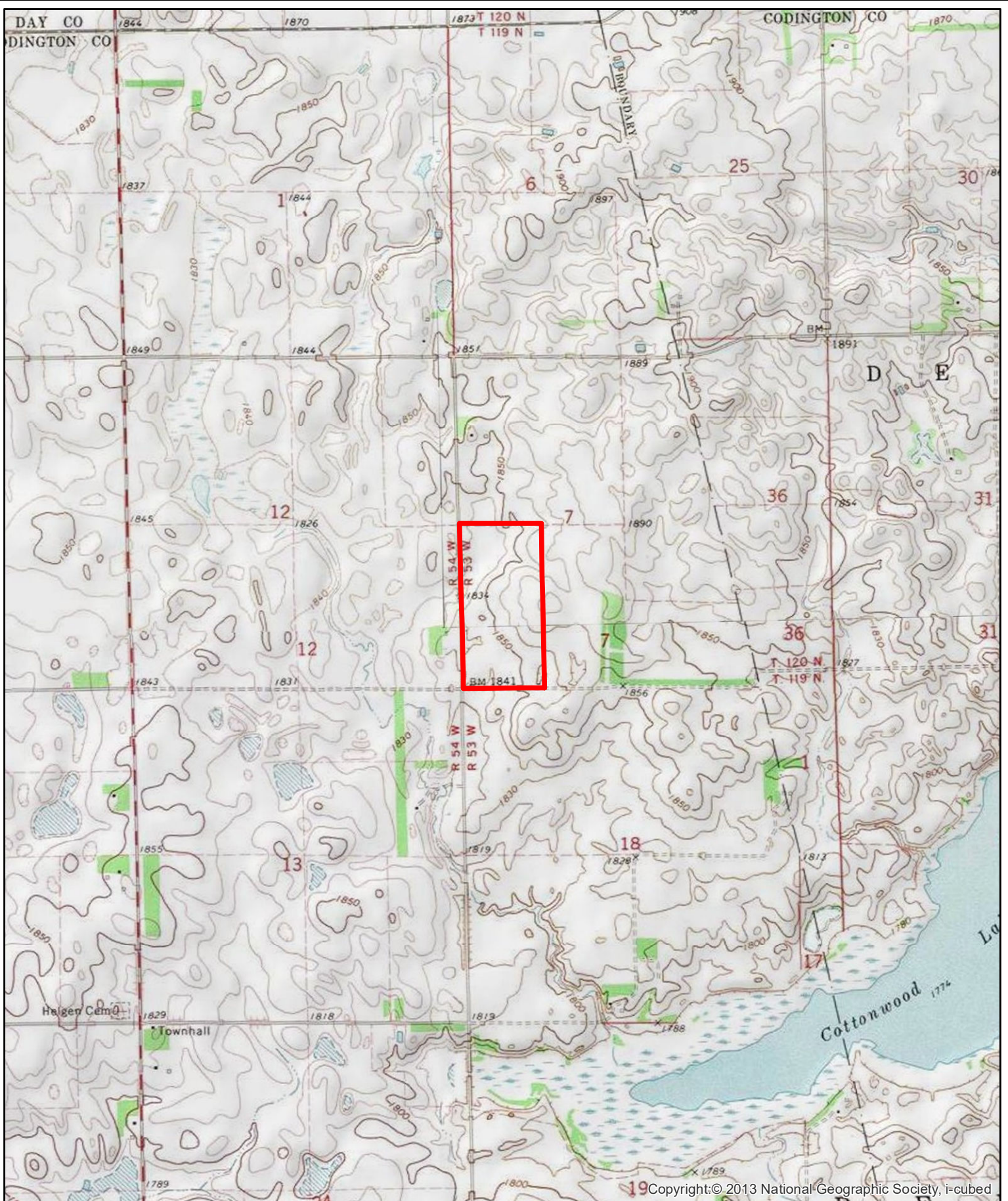


MAP		NON-IRR	PRODUCTIVITY	
SYMBOL	NAME	LCC	INDEX	ACRES
J162B	Poinsett-Buse-Waubay complex, 1 to 6 percent slopes	Ile	81	54.6
J164A	Poinsett-Waubay silty clay loams, 0 to 2 percent slopes	Is	93	9.7
J123A	Cubden-Badger silty clay loams, coteau, 0 to 2 percent slopes	IIs	81	3.7
Z107A	Parnell silty clay loam, coteau, 0 to 1 percent slopes	Vw	32	3.1
J122A	Cubden silty clay loam, 0 to 2 percent slopes	IIs	77	2.6
Z142C	Barnes-Buse-Svea loams, coteau, 2 to 9 percent slopes	IIle	63	1.7
J118C	Buse-Poinsett complex, 6 to 9 percent slopes	IVe	65	1.2
J162C	Poinsett-Buse-Waubay complex, 2 to 9 percent slopes	IIle	69	0.4
J192A	Waubay-Badger silty clay loams, 0 to 2 percent slopes	Iw	90	0.4
TOTAL			79.7	77.4



Erickson
Codington County, South Dakota

Latitude: 45.1259°N
 Longitude: -97.2467°W
 Imagery Source: USDA NAIP
 Soil Data Source: USDA NRCS
 Boundaries Are Approximate



Copyright:© 2013 National Geographic Society, i-cubed



Erickson
Codington County, South Dakota

Latitude: 45.1259°N
Longitude: -97.2467°W
Imagery Source: USDA NAIP
Soil Data Source: USDA NRCS
Boundaries Are Approximate