

South Dakota

Charles Mix

Report ID: FSA-156EZ

DISCLAIMER: This is data extracted from the web farm database. Because of potential messaging failures in MIDAS, this data is not guaranteed to be an accurate and complete representation of data contained in the MIDAS system, which is the system of record for Farm Records.

Operator Name

CLEARFIELD HUTTERIAN BRETHERN INC

Farm Identifier

Recon Number

Farms Associated with Operator:

101, 233, 265, 790, 4227, 7376, 8530, 8894

CRP Contract Number(s): None

Farmland	Cropland	DCP Cropland	WBP	WRP/WFP	CRP Cropland	GRP	Farm Status	Number of Tracts
1060.59	1053.1	1060.59	0.0	0.0	0.0	0.0	Active	2
0.0	0.0	1060.59	0.0	0.0	0.0	0.0		

ARC-CRC NONE ARC-CO WHEAT, CORN, SOYBN ARC/PLC PLC NONE PLC-Default NONE

Crop	Base Acreage	CTAP Tran Yield	PLC Yield	CCC-505 CRP Reduction
WHEAT	124.18		56	0.0
CORN	465.17		133	0.0
SOYBEANS	277.85		36	0.0
Total Base Acres:	867.2			

Tract Number: 7357 Description: S1/2 15 96 63

BIA Range Unit Number:

HEL Status: NHEL: no agricultural commodity planted on undetermined fields

Wetland Status: Tract does not contain a wetland

WL Violations: None

Farmland	Cropland	DCP Cropland	WBP	WRP/WFP	CRP Cropland	GRP
314.11	314.11	314.11	0.0	0.0	0.0	0.0
0.0	0.0	314.11	0.0	0.0	0.0	0.0

Crop	Base Acreage	CTAP Tran Yield	PLC Yield	CCC-505 CRP Reduction
WHEAT	36.76		56	0.0
CORN	137.69		133	0.0
SOYBEANS	82.24		36	0.0
Total Base Acres:	256.69			

Owners: MAUREEN EVANS

ROGER W EVANS

Other Producers: None

South Dakota

Farm Service Agency

Crop Year: 2018

Charles Mix

Abbreviated 156 Farm Record

Page: 2 of 2

Report ID: FSA-156EZ
 DISCLAIMER: This is data extracted from the web farm database. Because of potential messaging failures in MIDAS, this data is not guaranteed to be an accurate and complete representation of data contained in the MIDAS system, which is the system of record for Farm Records.

Tract Number: 8717 Description: E1/2;SW1/4;E1/2NW1/4;SWNW 22-96-63 NE 21-96-63

BIA Range Unit Number:

HEL Status: NHEL: no agricultural commodity planted on undetermined fields

Wetland Status: Tract contains a wetland or farmed wetland

WL Violations: None

	Farmland	Cropland	DCP Cropland	WBP	WRP/EWP	CRP Cropland	GRP
	746.48	738.99	746.48	0.0	0.0	0.0	0.0
State Conservation	Other Conservation	Effective DCP Cropland	Double Cropped	MP/LFWP	Native Sod		
0.0	0.0	746.48	0.0	0.0	0.0		

Crop	Base Acreage	CTAP Tran Yield	PLC Yield	CCC-505 CRP Reduction
WHEAT	87.42		56	0.0
CORN	327.48		133	0.0
SOYBEANS	195.61		36	0.0
Total Base Acres:		610.51		

Owners: MAUREEN EVANS

ROGER W EVANS

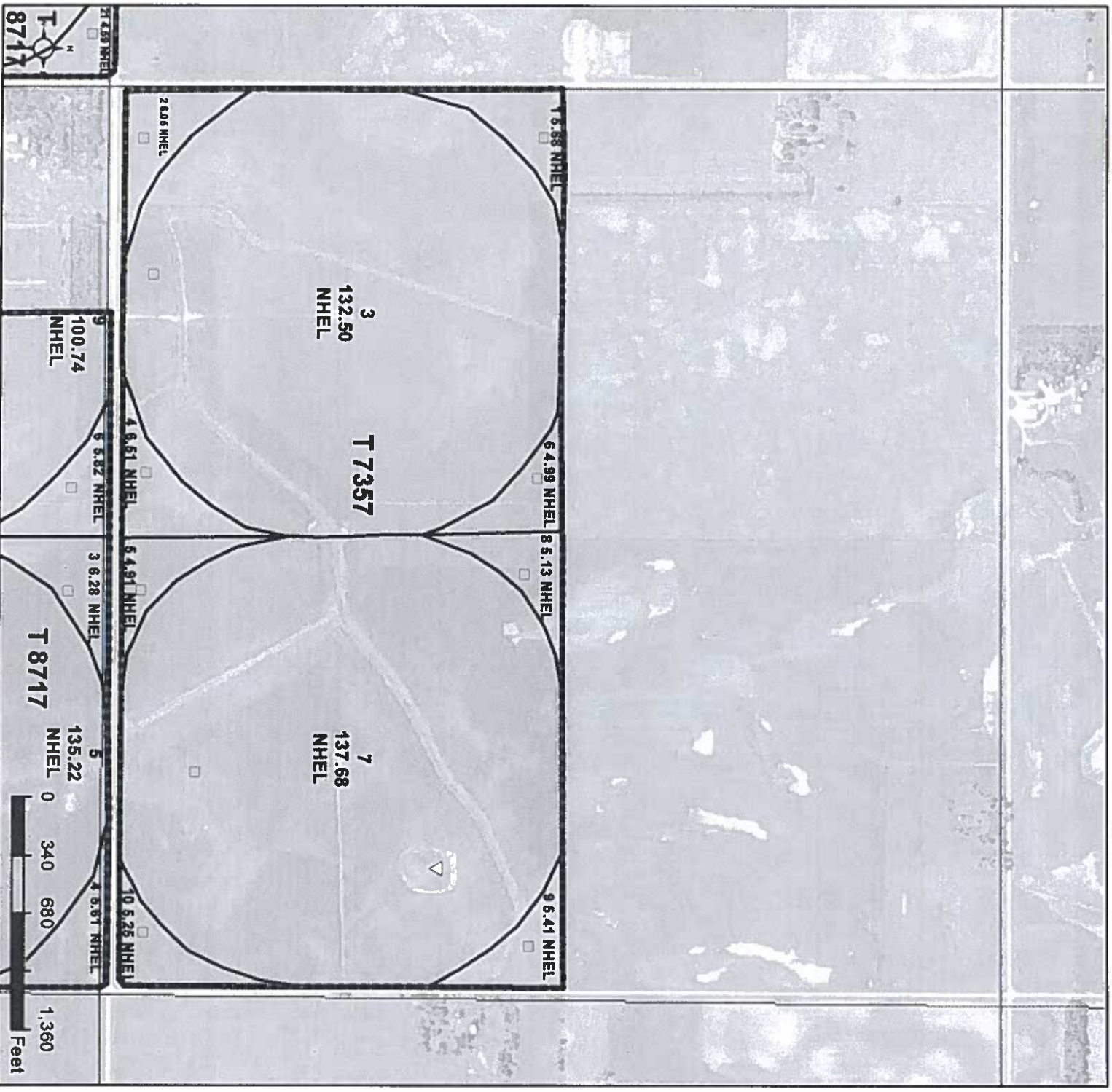
Other Producers: None



United States
Department of
Agriculture

Charles Mix County, South Dakota

ALL CORN IS YELLOW
ALL SOYBEANS ARE COMMON
ALL NONIRRIGATED UNLESS NOTED



Common Land Unit PLSS

Cropland
 Tract Boundary

Wetland Determination Identifiers

- Restricted Use
- ▽ Limited Restrictions
- Exempt from Conservation Compliance Provisions

2018 Program Year

Map Created January 09, 2018

Farm 6318

15-96N-63W

United States Department of Agriculture (USDA) Farm Service Agency (FSA) maps are for FSA Program administration only. This map does not represent a legal survey or reflect actual ownership, rather it depicts the information provided directly from the producer and/or National Agricultural Imagery Program (NAIP) imagery. The producer accepts the data as is and assumes all risks associated with its use. USDA-FSA assumes no responsibility for actual or consequential damage incurred as a result of any user's reliance on this data outside FSA Programs. Wetland identifiers do not represent the size, shape, or specific determination of the area. Refer to your original determination (CPA-026 and attached maps) for exact boundaries and determinations or contact USDA Natural Resources Conservation Service (NRCS).



United States
Department of
Agriculture

Charles Mix County, South Dakota

ALL CORN IS YELLOW
ALL SOYBEANS ARE COMMON
ALL NONIRRIGATED UNLESS NOTED



Common Land Unit PLSS

Crop Land
 Tract Boundary

Wetland Determination Identifiers

- Limited Restrictions
- Restricted Use
- Exempt from Conservation
- Compliance Provisions

2018 Program Year
Map Created January 09, 2018
Farm 6318

21-96N-63W

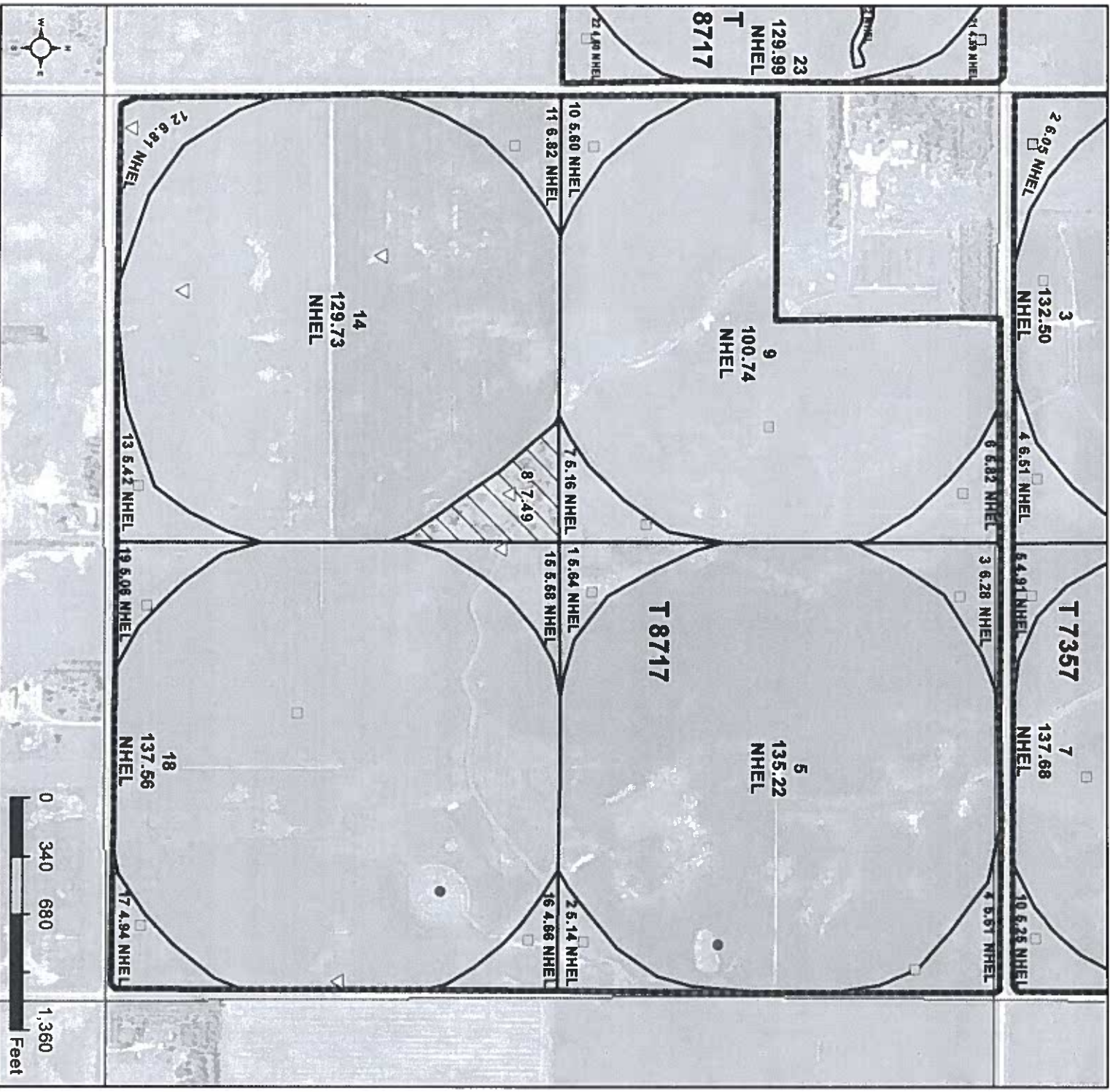
United States Department of Agriculture (USDA) Farm Service Agency (FSA) maps are for FSA Program administration only. This map does not represent a legal survey or reflect actual ownership; rather it depicts the information provided directly from the producer and/or National Agricultural Imagery Program (NAIP) imagery. The producer accepts the data as is and assumes all risks associated with its use. USDA-FSA assumes no responsibility for actual or consequential damage incurred as a result of any user's reliance on this data outside FSA Programs. Wetland identifiers do not represent the size, shape, or specific determination of the area. Refer to your original determination (CPA-026 and attached maps) for exact boundaries and determinations or contact USDA Natural Resources Conservation Service (NRCS).



United States
Department of
Agriculture

Charles Mix County, South Dakota

ALL CORN IS YELLOW
ALL SOYBEANS ARE COMMON
ALL NONIRRIGATED UNLESS NOTED



Common Land Unit Tract Boundary
 Non-Cropland
 Cropland

Wetland Determination Identifiers

- Restricted Use
- Limited Restrictions
- Exempt from Conservation
- Compliance Provisions

PLSS

2018 Program Year

Map Created January 09, 2018

Farm 6318

22-96N-63W

United States Department of Agriculture (USDA) Farm Service Agency (FSA) maps are for FSA Program administration only. This map does not represent a legal survey or reflect actual ownership; rather it depicts the information provided directly from the producer and/or National Agricultural Imagery Program (NAIP) imagery. The producer accepts the data as is and assumes all risks associated with its use. USDA-FSA assumes no responsibility for actual or consequential damage incurred as a result of any user's reliance on this data outside FSA Programs. Wetland identifiers do not represent the size, shape, or specific determination of the area. Refer to your original determination (CPA-026 and attached maps) for exact boundaries and determinations or contact USDA Natural Resources Conservation Service (NRCS).