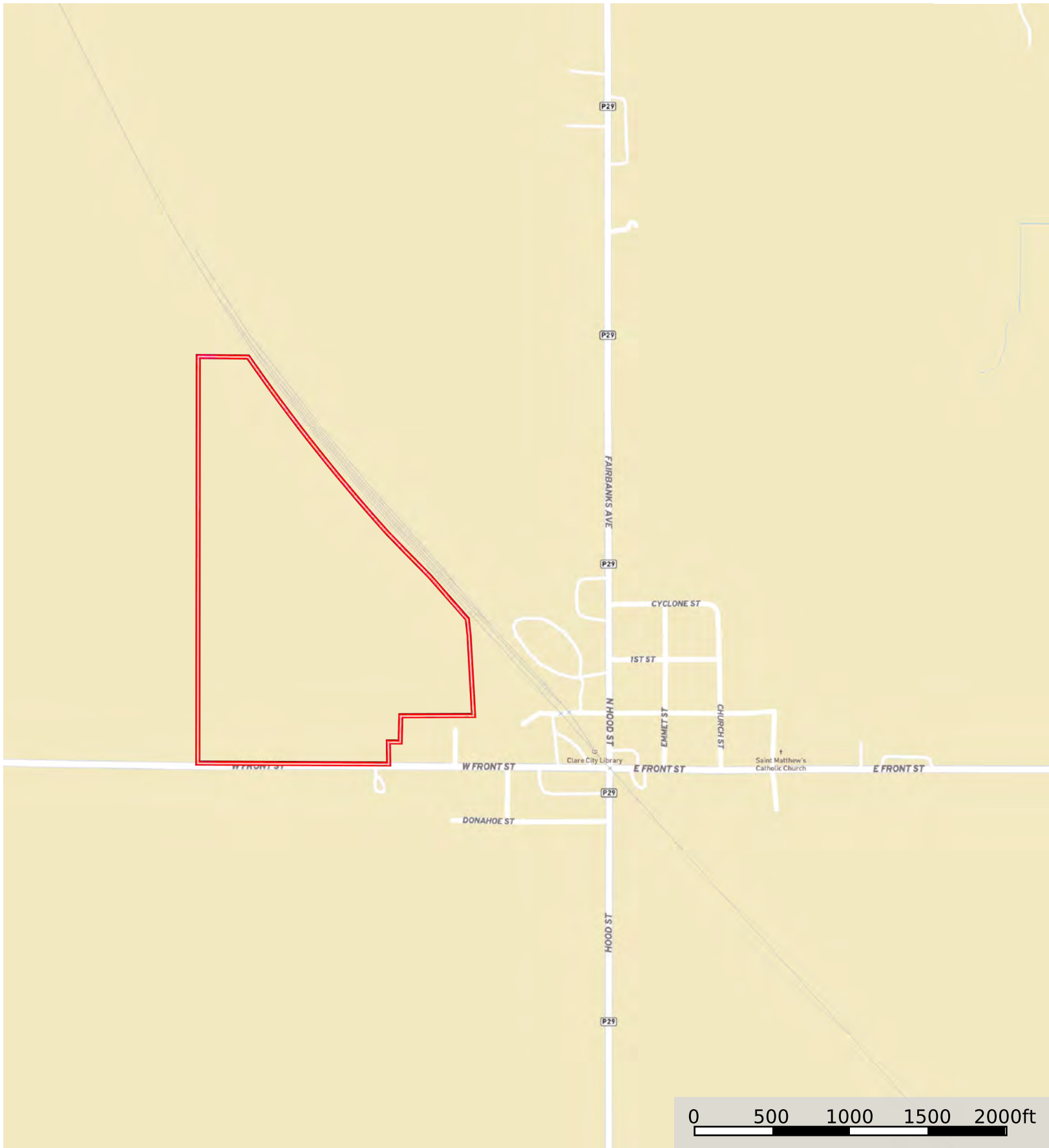


L-2400514

Webster County, Iowa, 72.44 AC +/-



Boundary

L-2400514

Webster County, Iowa, 72.44 AC +/-



Boundary



The information contained herein was obtained from sources deemed to be reliable. Land id™ Services makes no warranties or guarantees as to the completeness or accuracy thereof.



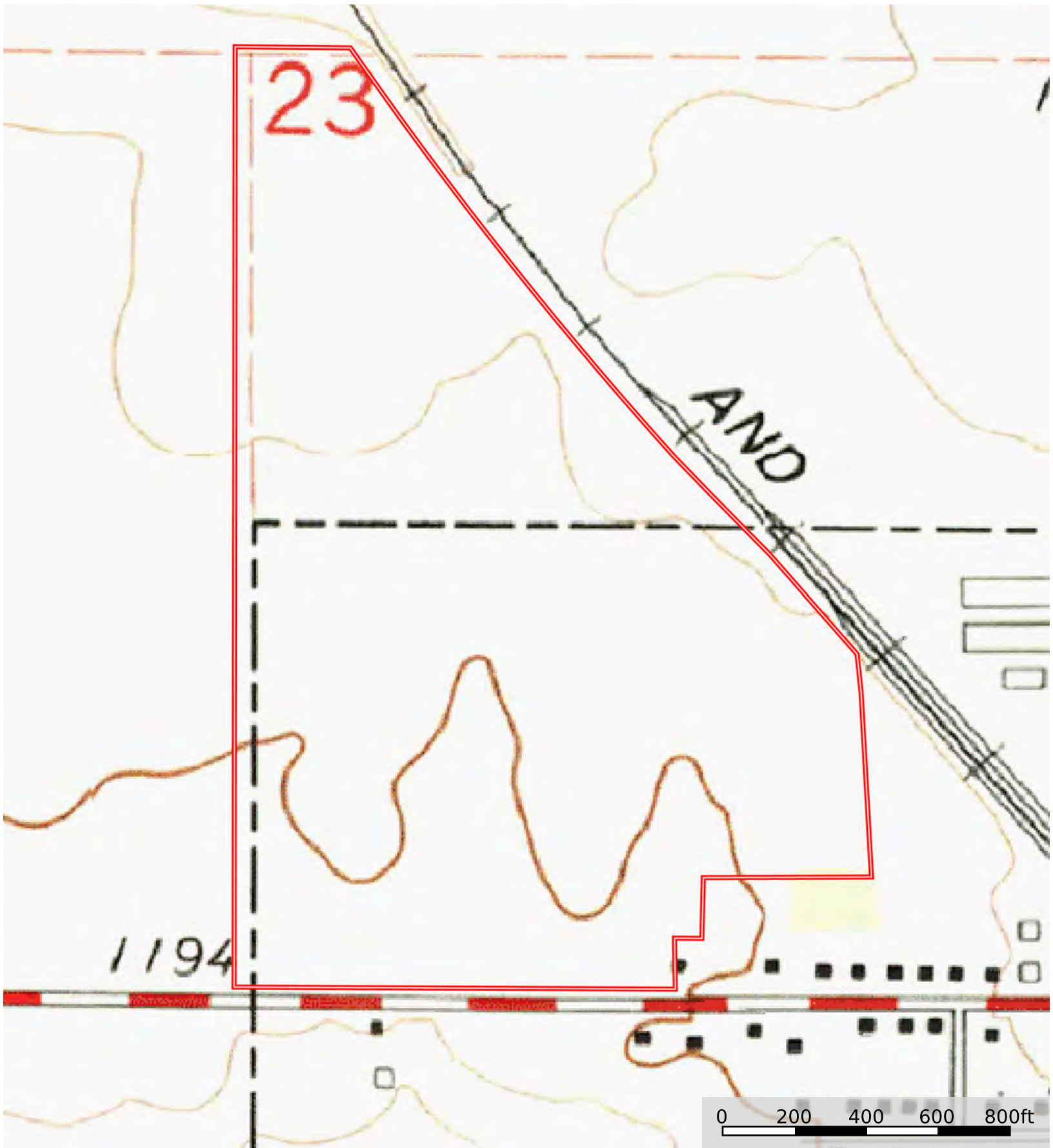
Boundary

| Boundary 72.23 ac

SOIL CODE	SOIL DESCRIPTION	ACRES	%	CSR2	CPI	NCCPI	CAP
107	Webster clay loam, 0 to 2 percent slopes	39.69	54.96	86.0	0	83	2w
138B	Clarion loam, 2 to 6 percent slopes	17.7	24.51	89.0	0	83	2e
55	Nicollet clay loam, 1 to 3 percent slopes	10.96	15.18	89.0	0	81	1
138C2	Clarion loam, 6 to 10 percent slopes, moderately eroded	3.51	4.86	83.0	0	69	3e
6	Okoboji silty clay loam, 0 to 1 percent slopes	0.37	0.51	59.0	0	76	3w
TOTALS		72.23(*)	100%	86.92	-	81.99	1.9

(*) Total acres may differ in the second decimal compared to the sum of each acreage soil. This is due to a round error because we only show the acres of each soil with two decimal.





Boundary