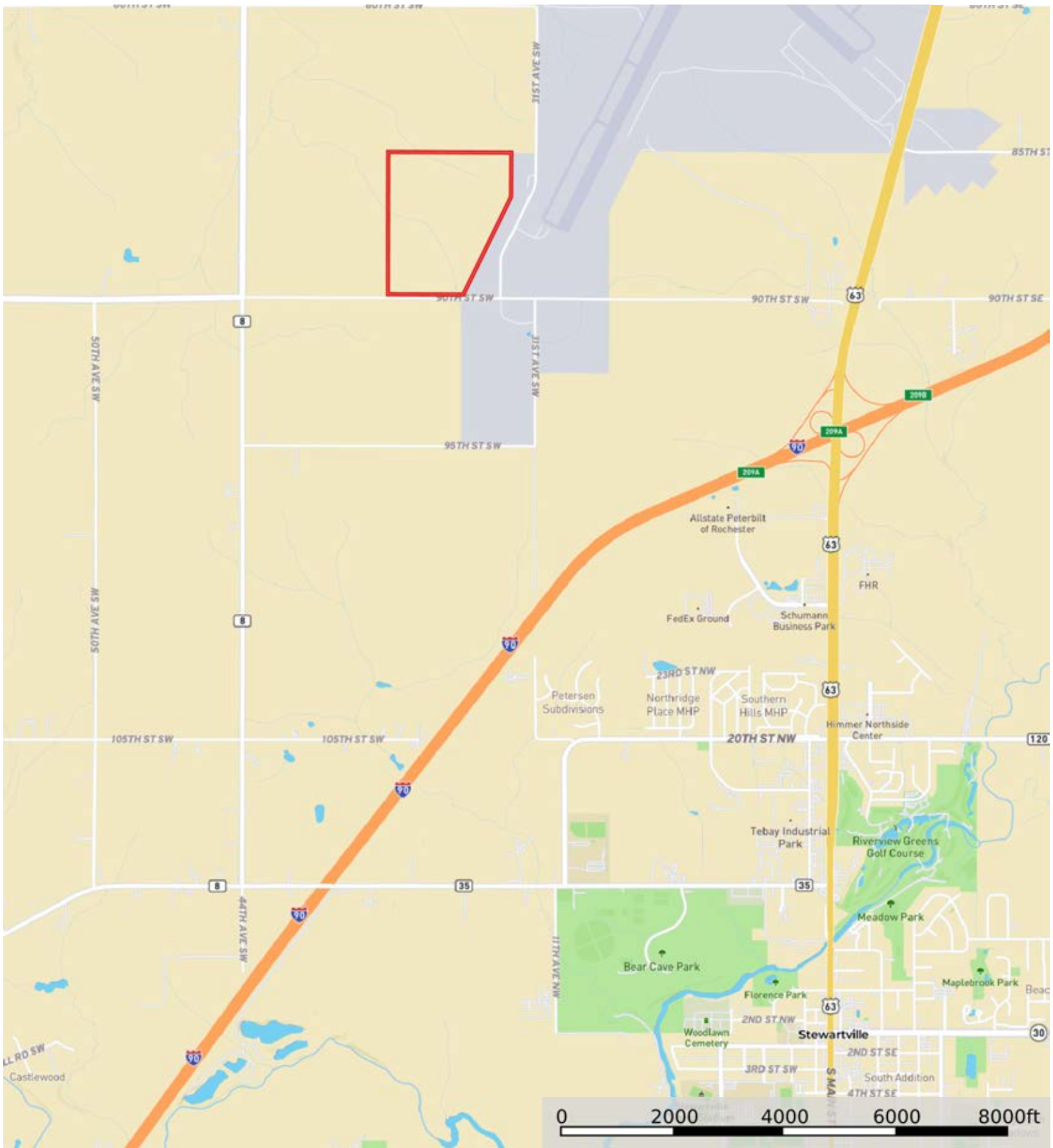


Menshik

Olmsted County, Minnesota, 115.14 AC +/-




 Boundary



 Boundary



 Boundary

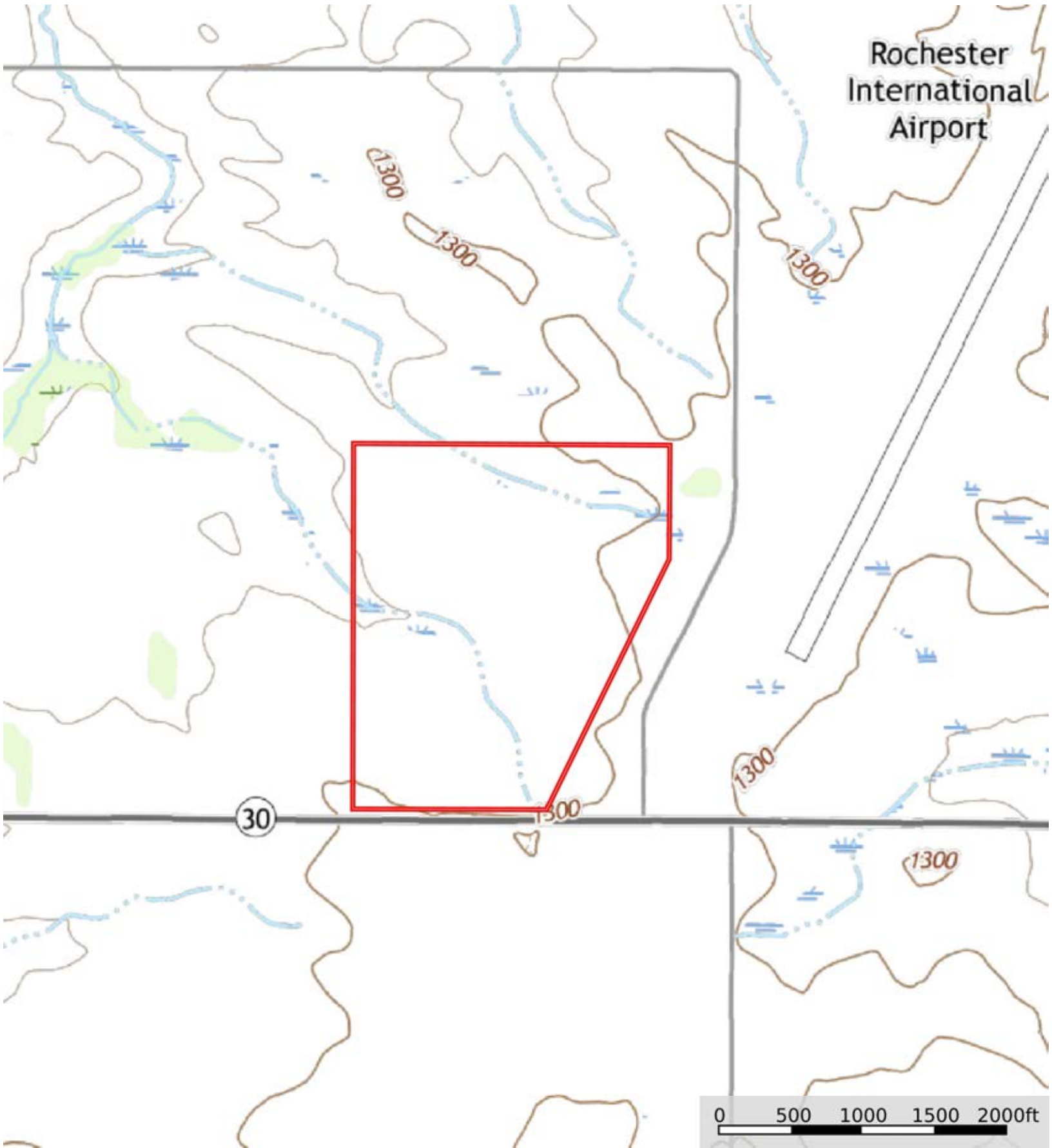
|  Boundary 112.2 ac


SOIL CODE	SOIL DESCRIPTION	ACRES	%	CPI	NCCPI	CAP
176	Garwin silty clay loam	56.12	50.02	86	75	2w
333	Vasa silt loam	24.4	21.75	93	95	1
203	Joy silt loam, 1 to 4 percent slopes	14.91	13.29	98	91	2e
401B	Mt. Carroll silt loam, 2 to 6 percent slopes, moderately eroded	9.09	8.1	90	85	2e
468	Otter silt loam, channeled	4.5	4.01	20	17	6w
209B	Kegonsa silt loam, 2 to 6 percent slopes	3.15	2.81	69	69	2e
401C2	Mt. Carroll silt loam, 6 to 12 percent slopes, moderately eroded	0.03	0.03	80	83	3e
TOTALS		112.2(*)	100%	86.32	79.79	1.94

(*) Total acres may differ in the second decimal compared to the sum of each acreage soil. This is due to a round error because we only show the acres of each soil with two decimal.



Menshik
Olmsted County, Minnesota, 115.14 AC +/-



 Boundary