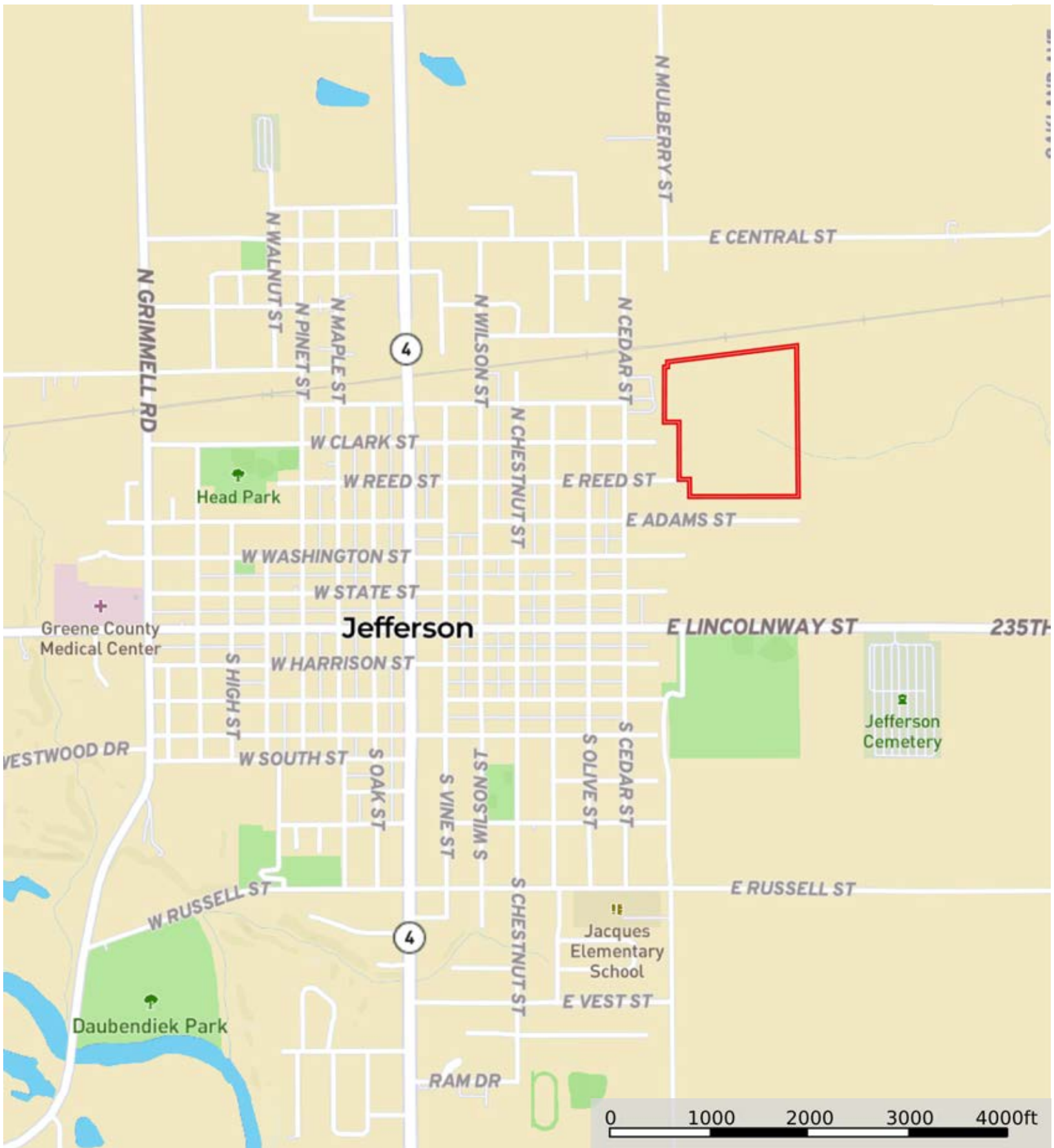



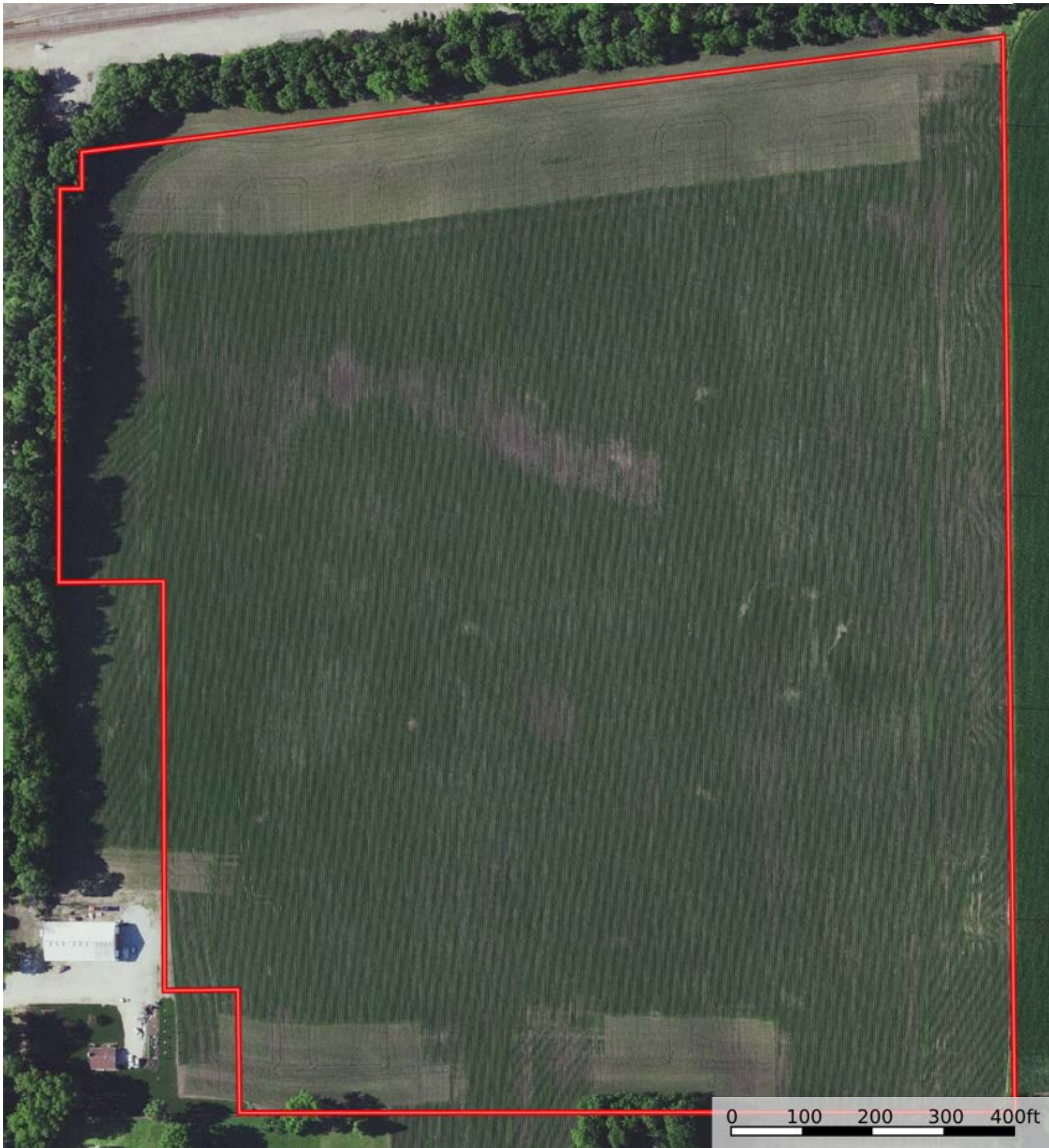
# Smith Farm

Greene County, Iowa, 42.14 AC +/-



 Boundary

**Smith Farm**  
Greene County, Iowa, 42.14 AC +/-



 Boundary



# Smith Farm

Greene County, Iowa, 42.14 AC +/-



 Boundary

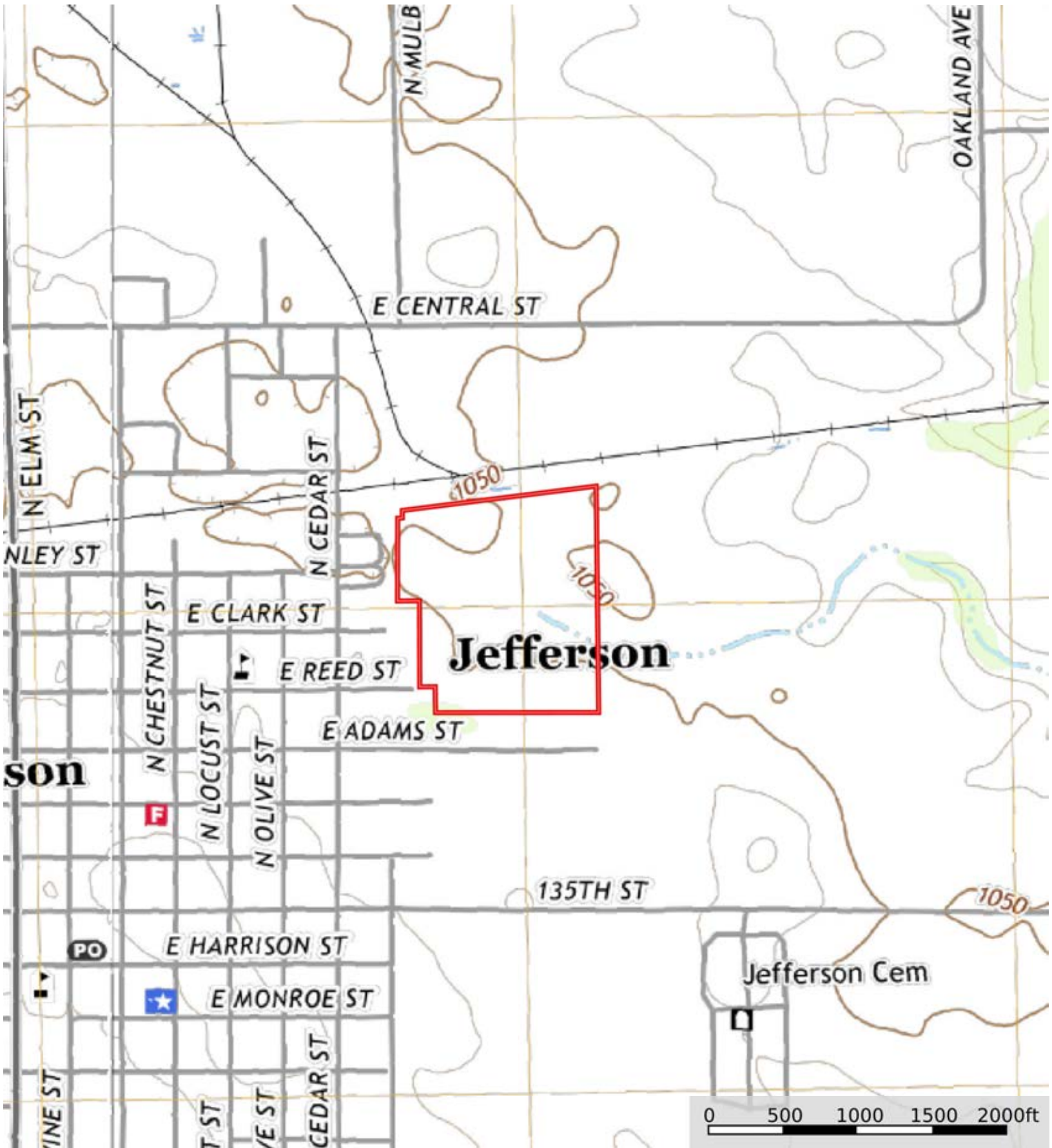
|  Boundary 41.35 ac


SOIL CODE	SOIL DESCRIPTION	ACRES	%	CSR2	CPI	NCCPI	CAP
L107	Webster clay loam, Bemis moraine, 0 to 2 percent slopes	24.5	59.25	88.0	0	84	2w
L507	Canisteo clay loam, Bemis moraine, 0 to 2 percent slopes	6.91	16.71	87.0	0	82	2w
L55	Nicollet loam, 1 to 3 percent slopes	4.5	10.88	91.0	0	86	1
L138B2	Clarion loam, Bemis moraine, 2 to 6 percent slopes, moderately eroded	3.31	8.0	85.0	0	71	2e
L138B	Clarion loam, Bemis moraine, 2 to 6 percent slopes	2.13	5.15	88.0	0	81	2e
TOTALS		41.35(*)	100%	87.92	-	82.69	1.89

(\*) Total acres may differ in the second decimal compared to the sum of each acreage soil. This is due to a round error because we only show the acres of each soil with two decimal.



**Smith Farm**  
Greene County, Iowa, 42.14 AC +/-



 Boundary