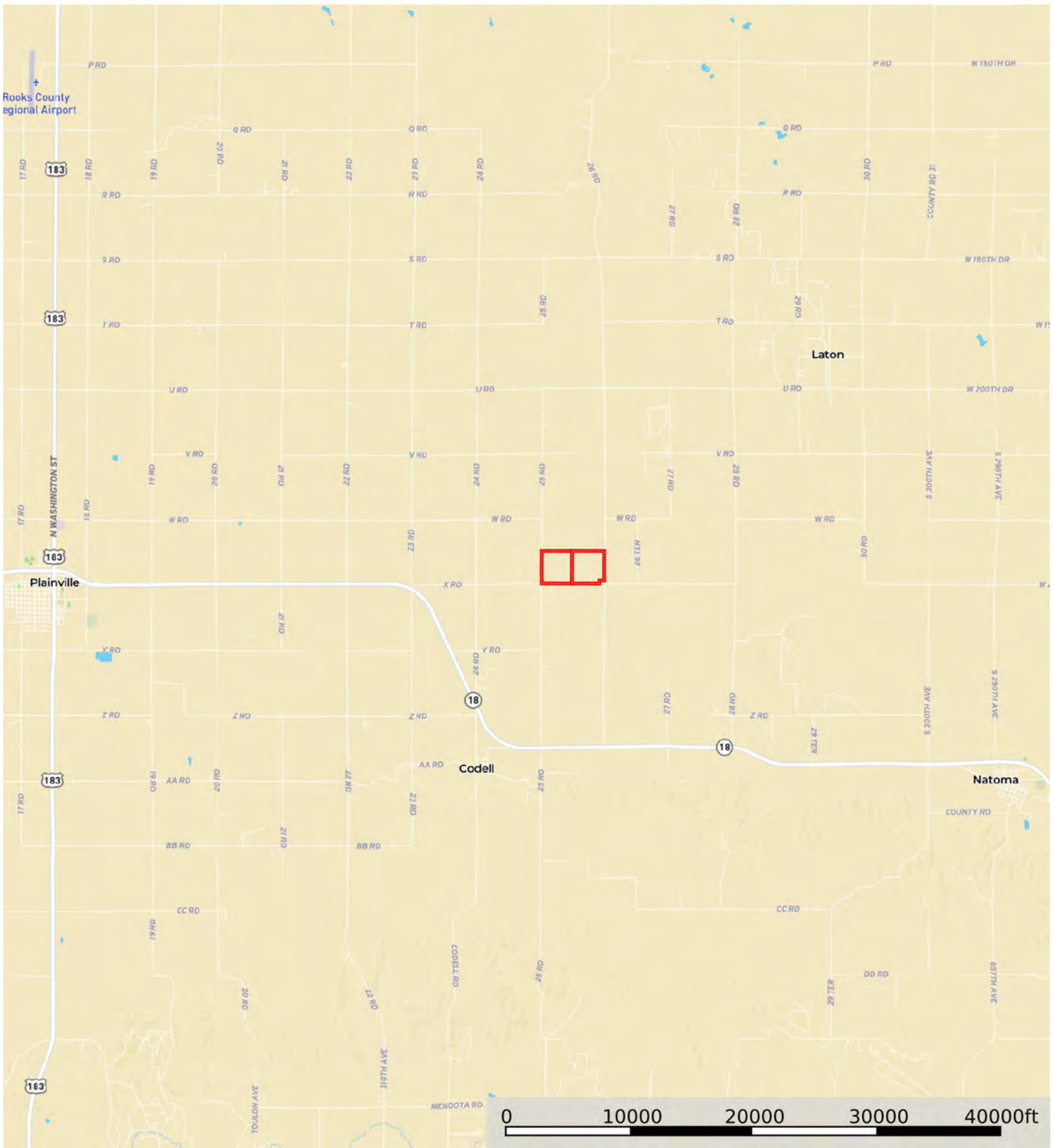
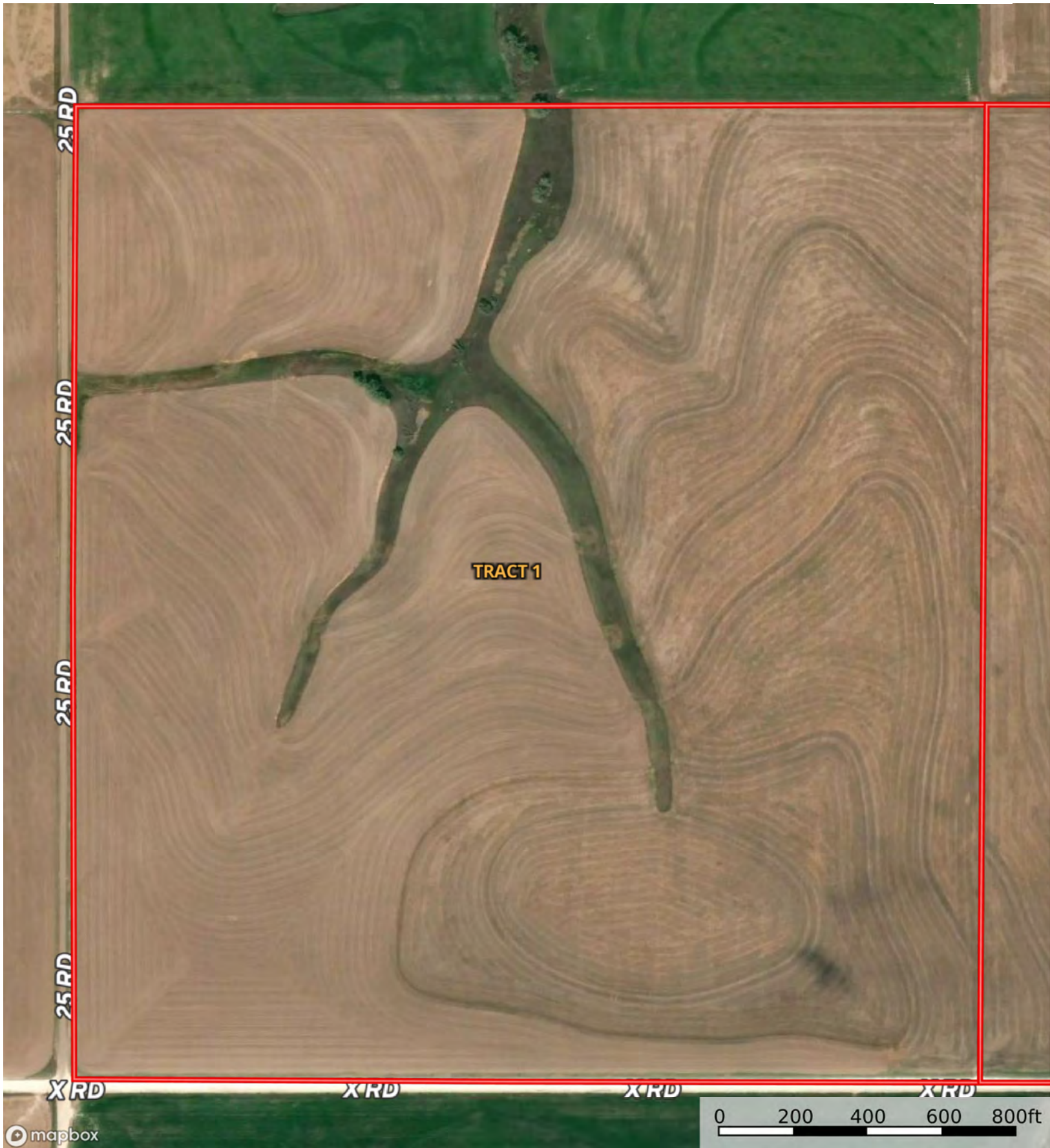


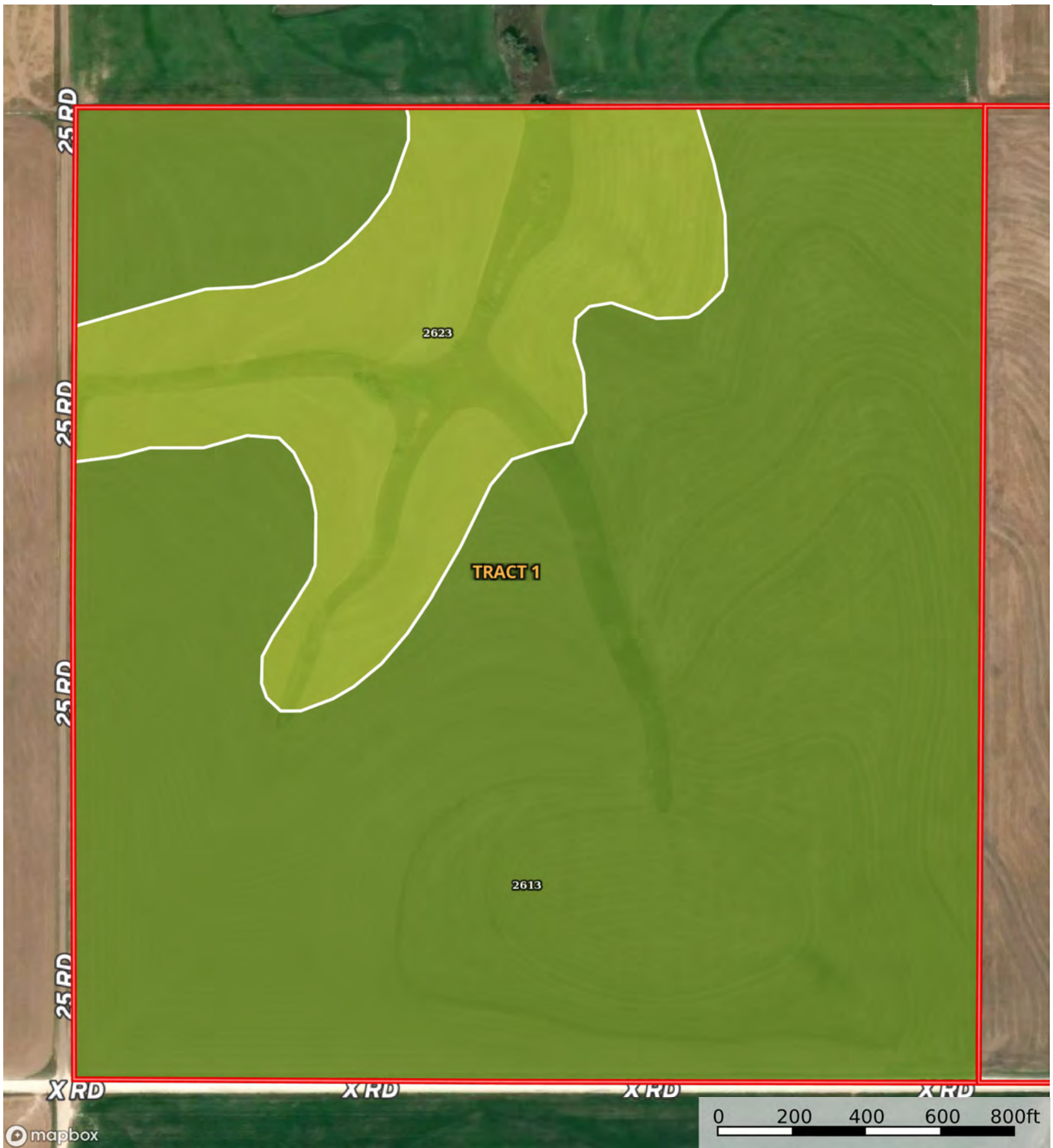
L-2200615  
Rooks County, Kansas, 304.9 AC +/-



 Boundary



Boundary



Boundary

|  Boundary 148.64 ac

SOIL CODE	SOIL DESCRIPTION	ACRES	%	CPI	NCCPI	CAP
2613	Harney silt loam, 1 to 3 percent slopes	118.18	79.51	0	70	2e
2623	Harney-Mento complex, 3 to 7 percent slopes	30.46	20.49	0	66	3e
TOTALS		148.64(*)	100%	-	69.18	2.2

(\*) Total acres may differ in the second decimal compared to the sum of each acreage soil. This is due to a round error because we only show the acres of each soil with two decimal.



L-2200615

Rooks County, Kansas, 304.9 AC +/-



TD

XRD

XRD

mapbox

0 200 400 600 800ft

Boundary



The information contained herein was obtained from sources deemed to be reliable. MapRight Services makes no warranties or guarantees as to the completeness or accuracy thereof.

L-2200615

Rooks County, Kansas, 304.9 AC +/-



mapbox

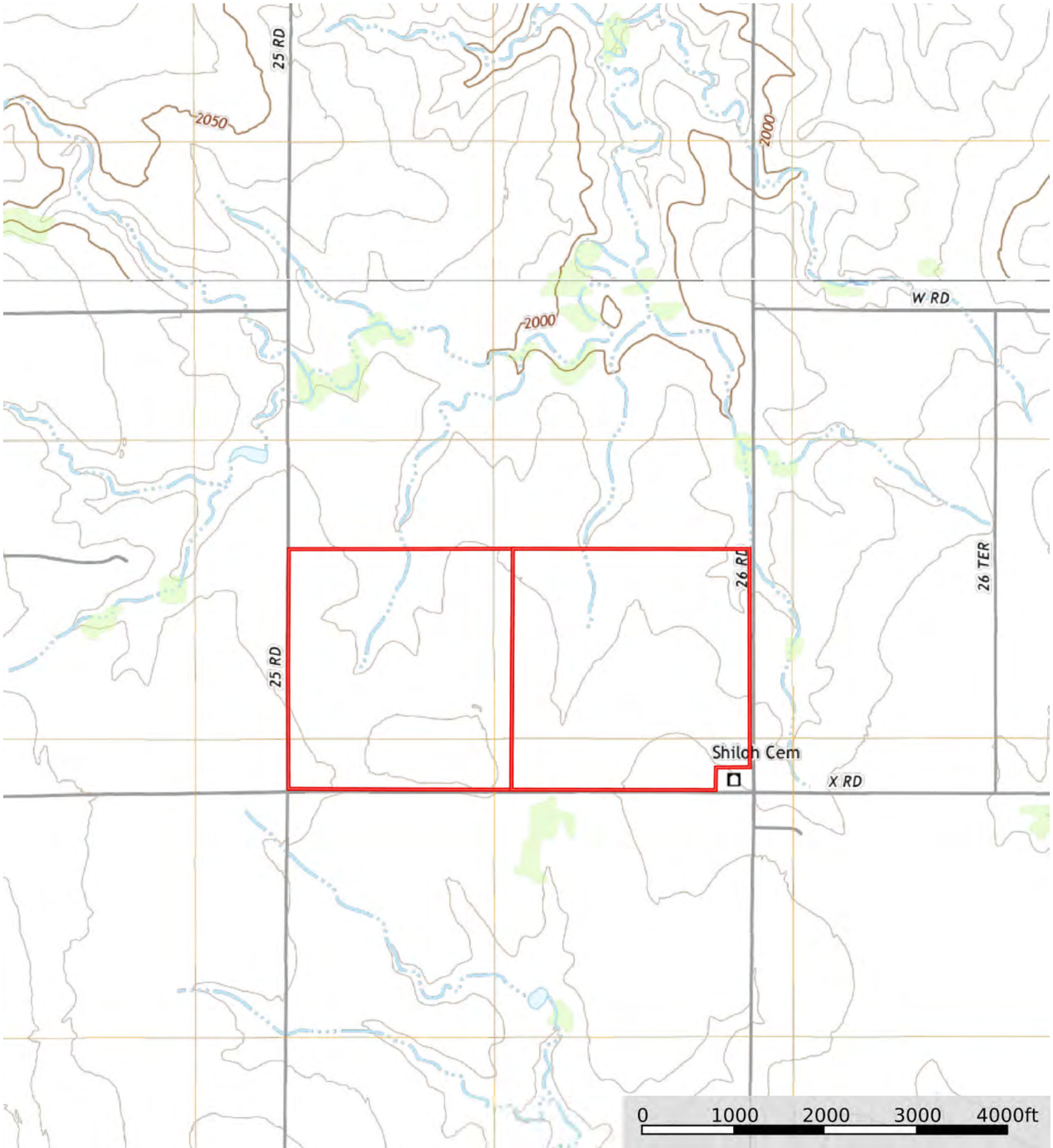
Boundary

Boundary 156.1 ac

SOIL CODE	SOIL DESCRIPTION	ACRES	%	CPI	NCCPI	CAP
2613	Harney silt loam, 1 to 3 percent slopes	68.06	43.6	0	70	2e
2622	Harney-Mento complex, 1 to 3 percent slopes	41.71	26.72	0	65	2e
2623	Harney-Mento complex, 3 to 7 percent slopes	33.63	21.54	0	66	3e
2612	Harney silt loam, 0 to 1 percent slopes	7.46	4.78	0	71	2c
2660	Heizer-Brownell complex, 5 to 30 percent slopes	3.28	2.1	0	18	7s
2953	Wakeen silt loam, 3 to 7 percent slopes	1.42	0.91	0	47	4e
2236	Roxbury silt loam, occasionally flooded	0.54	0.35	0	78	2w
TOTALS		156.1(*)	100%	-	66.58	2.34

(\*) Total acres may differ in the second decimal compared to the sum of each acreage soil. This is due to a round error because we only show the acres of each soil with two decimal.





 Boundary