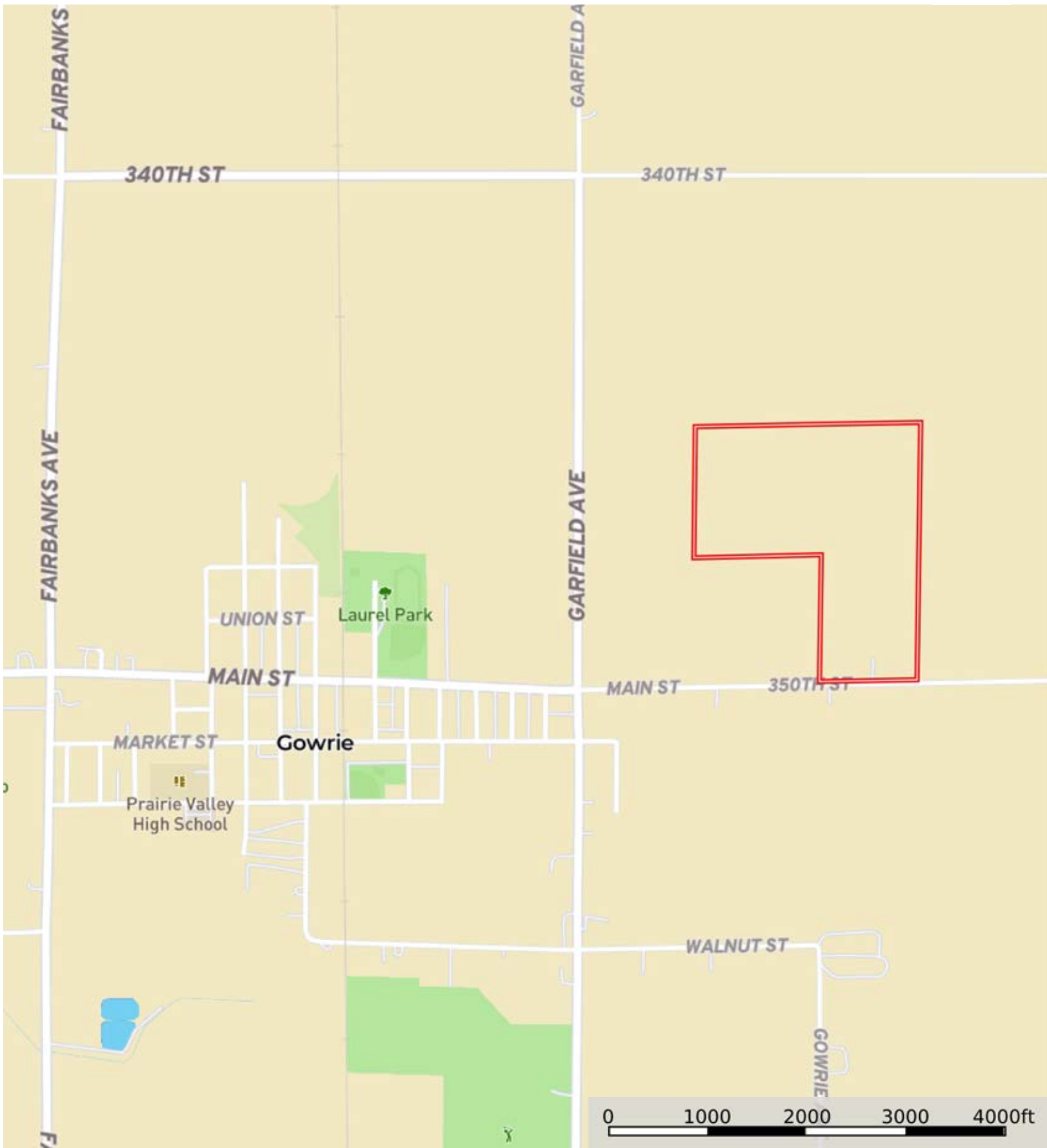



# Webster County Farm

Webster County, Iowa, 99 AC +/-




 Boundary

# Webster County Farm

Webster County, Iowa, 99 AC +/-




 Boundary



# Webster County Farm

Webster County, Iowa, 99 AC +/-



 Boundary

|  Boundary 98.15 ac

SOIL CODE	SOIL DESCRIPTION	ACRES	%	CSR2	CPI	NCCPI	CAP
55	Nicollet clay loam, 1 to 3 percent slopes	27.17	27.69	89.0	0	81	1
956	Harps-Okoboji complex, 0 to 2 percent slopes	21.72	22.13	69.0	0	80	2w
138B	Clarion loam, 2 to 6 percent slopes	20.43	20.82	89.0	0	83	2e
507	Canisteo clay loam, 0 to 2 percent slopes	17.92	18.26	84.0	0	82	2w
6	Okoboji silty clay loam, 0 to 1 percent slopes	6.89	7.02	59.0	0	75	3w
107	Webster clay loam, 0 to 2 percent slopes	4.0	4.08	86.0	0	83	2w
95	Harps clay loam, 0 to 2 percent slopes	0.02	0.02	72.0	0	82	2w
TOTALS		98.15( *)	100%	81.45	-	81.05	1.79

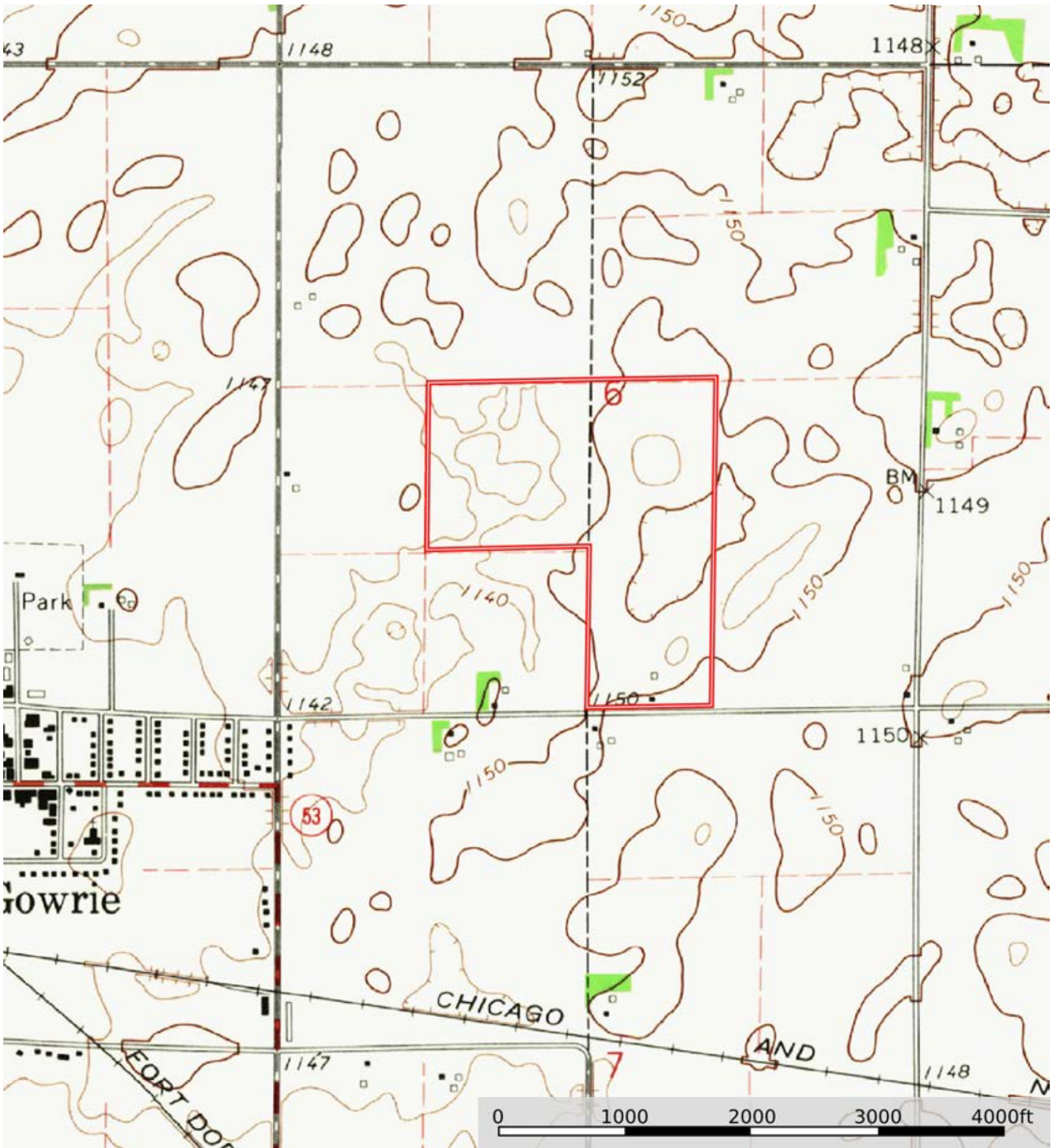
(\*) Total acres may differ in the second decimal compared to the sum of each acreage soil. This is due to a round error because we only show the acres of each soil with two decimal.






# Webster County Farm

Webster County, Iowa, 99 AC +/-



 Boundary