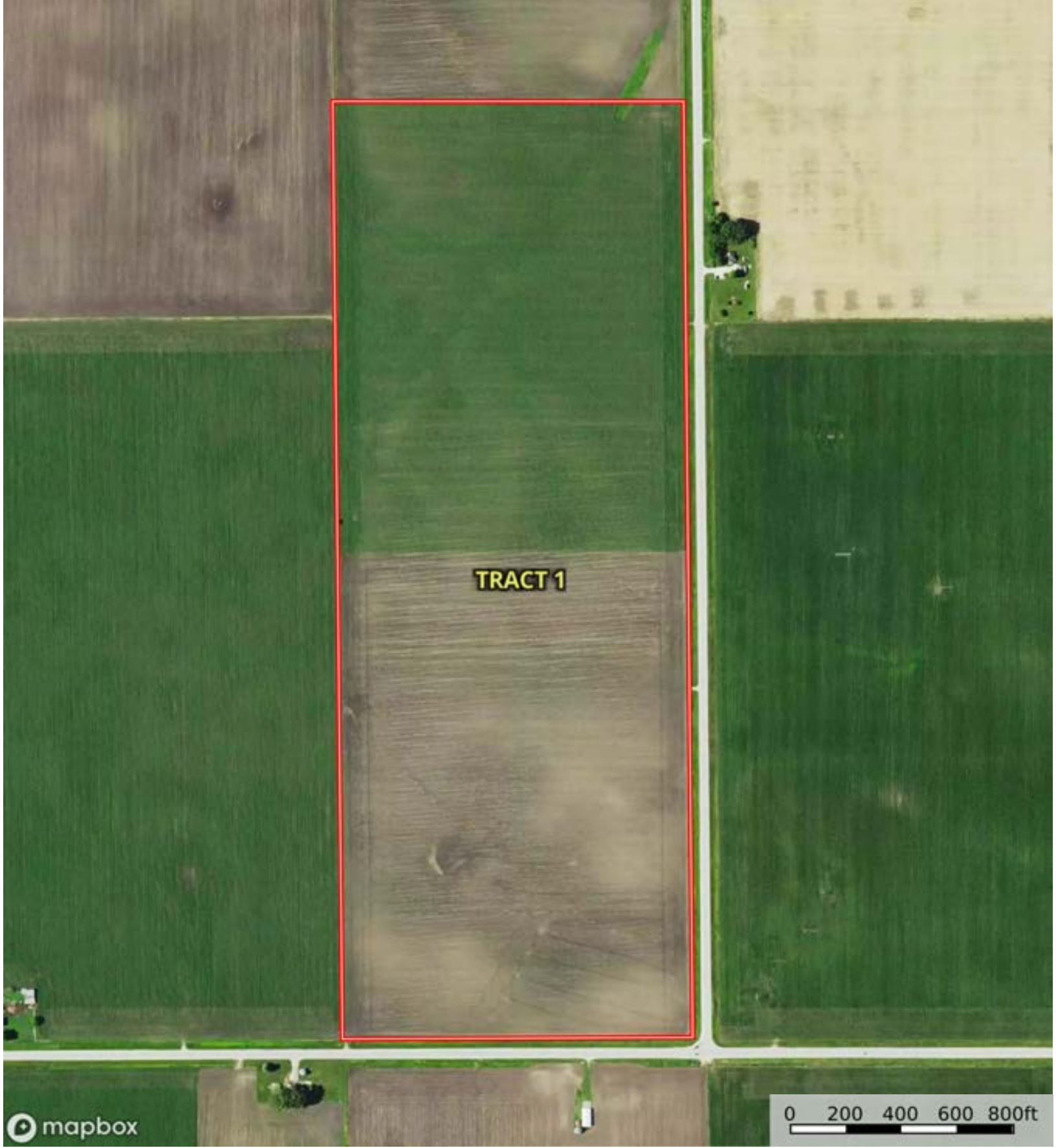
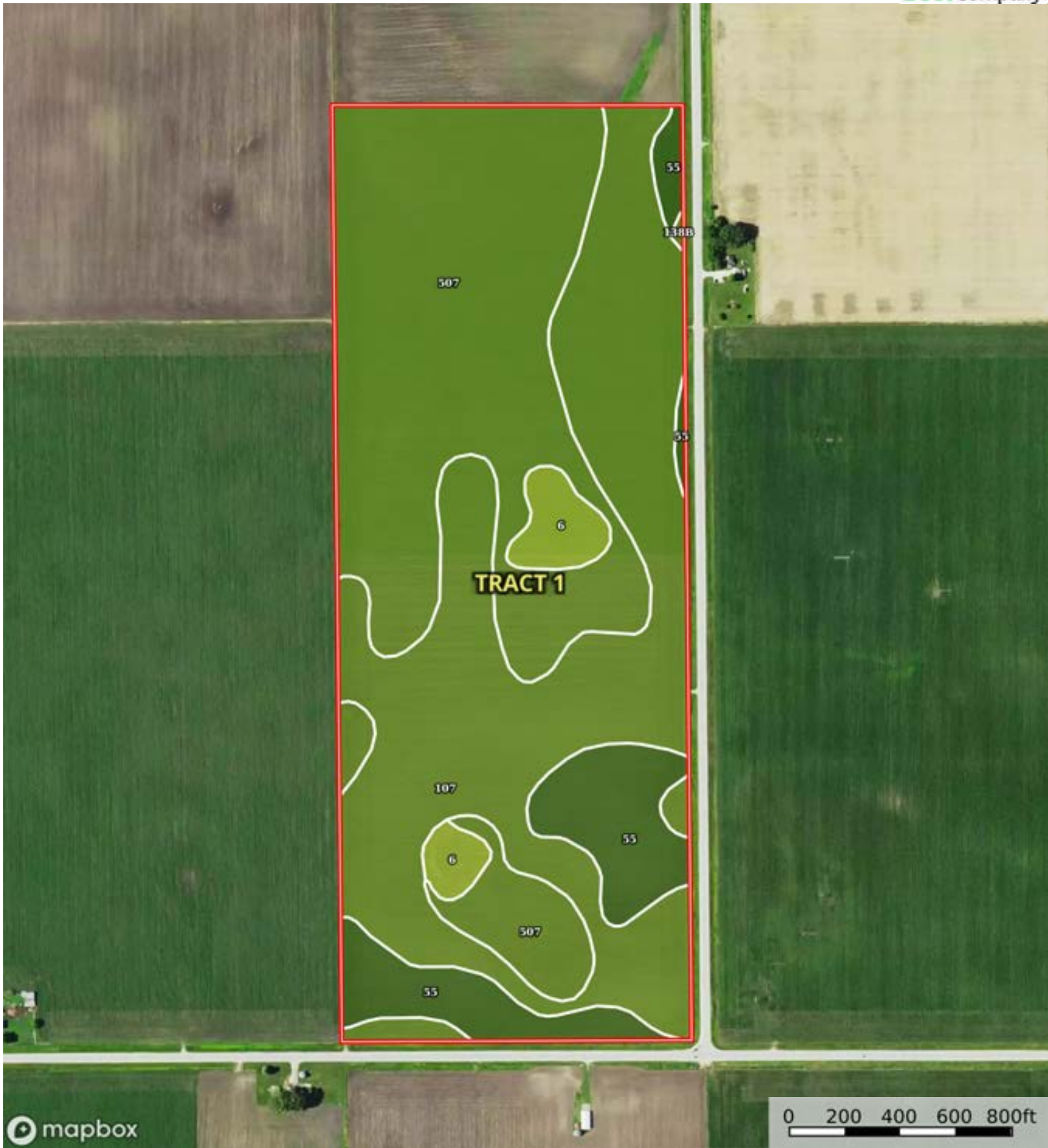


Boundary



**TRACT 1**



|  Boundary 98.23 ac

SOIL CODE	SOIL DESCRIPTION	ACRES	%	CSR2	CPI	NCCPI	CAP
107	Webster clay loam, 0 to 2 percent slopes	42.15	42.91	86.0	0	83	2w
507	Canisteo clay loam, 0 to 2 percent slopes	41.2	41.94	84.0	0	82	2w
55	Nicollet clay loam, 1 to 3 percent slopes	11.56	11.77	89.0	0	81	1
6	Okoboji silty clay loam, 0 to 1 percent slopes	3.23	3.29	59.0	0	75	3w
138B	Clarion loam, 2 to 6 percent slopes	0.09	0.09	89.0	0	83	2e
TOTALS		98.23(*)	100%	84.62	-	82.07	1.92


(\*) Total acres may differ in the second decimal compared to the sum of each acreage soil. This is due to a round error because we only show the acres of each soil with two decimal.






mapbox

0 200 400 600 800ft

 Boundary



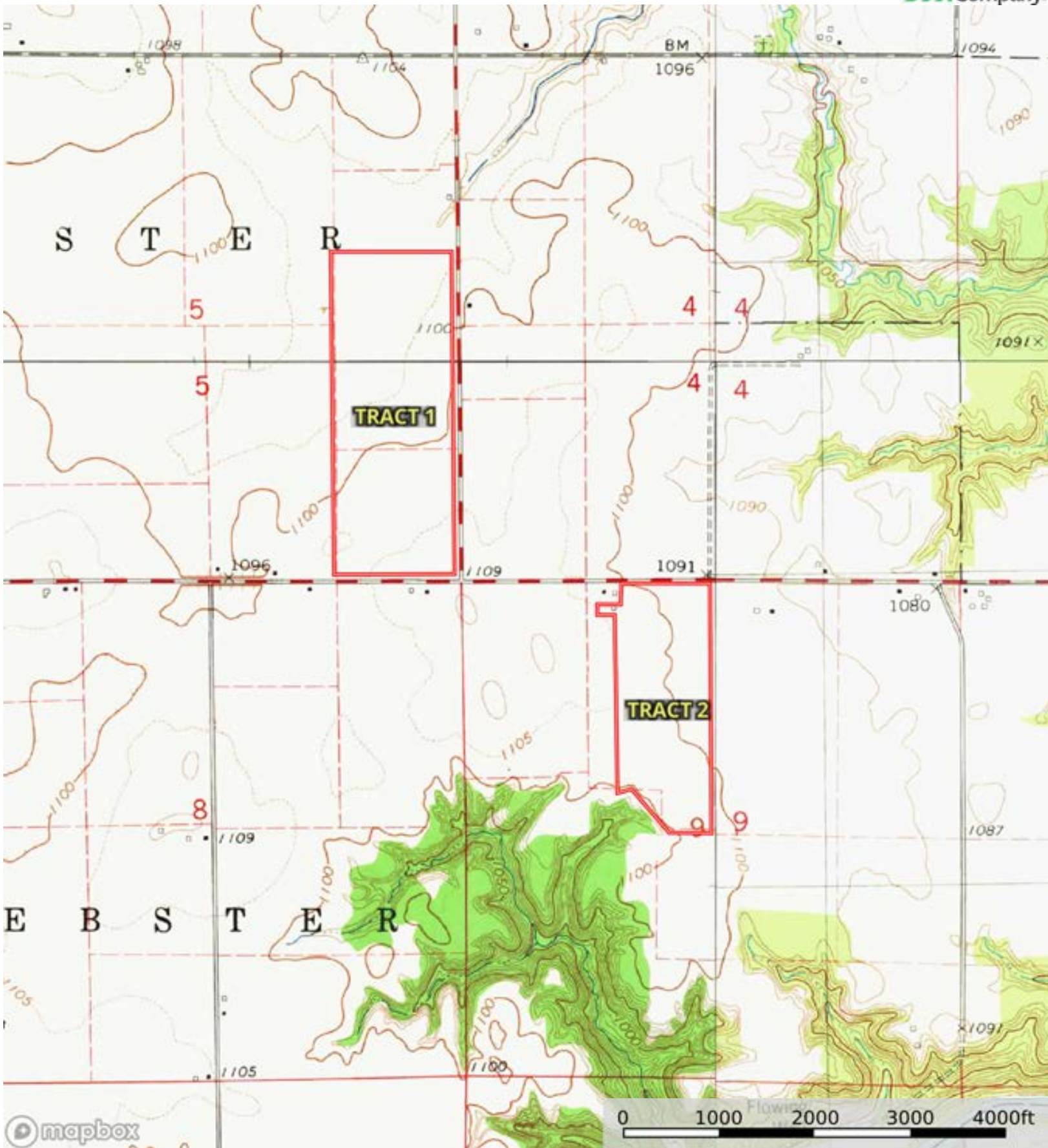
 Boundary


|  Boundary 56.17 ac

SOIL CODE	SOIL DESCRIPTION	ACRES	%	CSR2	CPI	NCCPI	CAP
107	Webster clay loam, 0 to 2 percent slopes	35.17	62.61	86.0	0	83	2w
55	Nicollet clay loam, 1 to 3 percent slopes	16.23	28.89	89.0	0	81	1
138B	Clarion loam, 2 to 6 percent slopes	4.1	7.3	89.0	0	83	2e
6	Okoboji silty clay loam, 0 to 1 percent slopes	0.66	1.18	59.0	0	75	3w
507	Canisteo clay loam, 0 to 2 percent slopes	0.01	0.02	84.0	0	82	2w
TOTALS		56.17(*)	100%	86.77	-	82.33	1.72

(\*) Total acres may differ in the second decimal compared to the sum of each acreage soil. This is due to a round error because we only show the acres of each soil with two decimal.



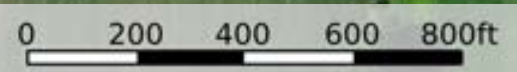
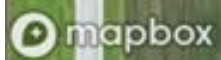



 Boundary





**TRACT 3**



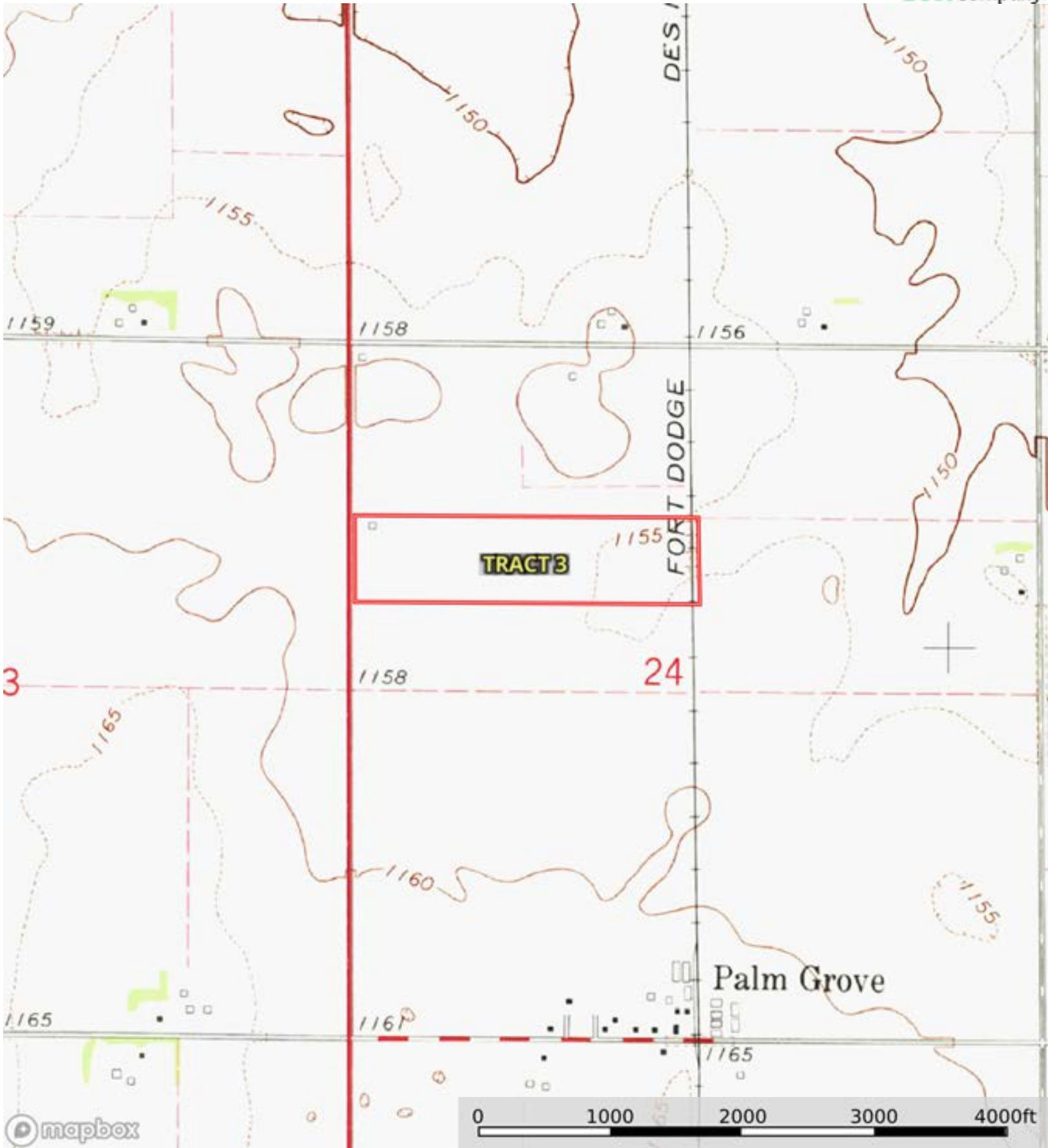
 Boundary

|  Boundary 39.41 ac

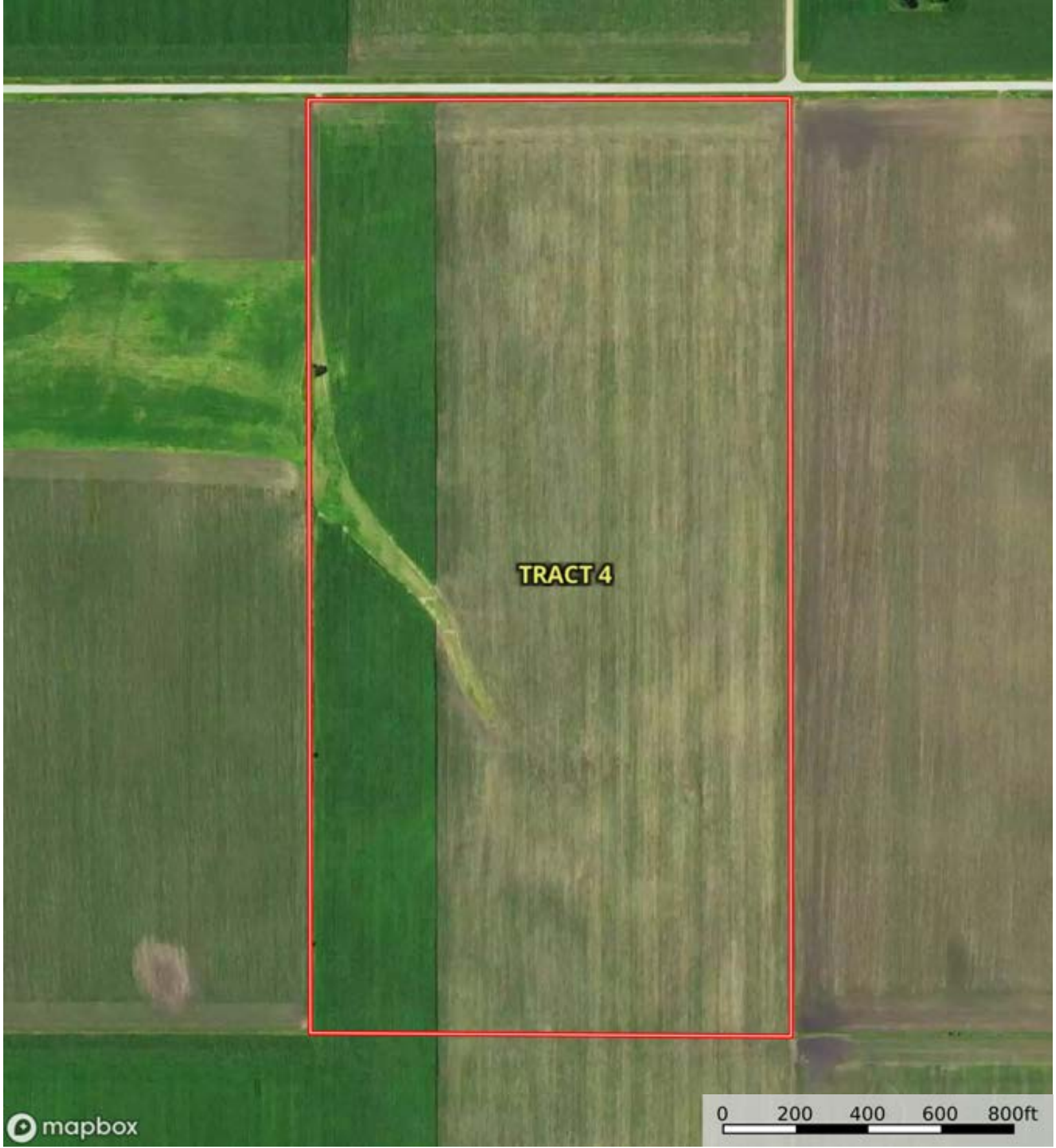
SOIL CODE	SOIL DESCRIPTION	ACRES	%	CSR2	CPI	NCCPI	CAP
1507	Brownton silty clay loam, 0 to 2 percent slopes	18.65	47.34	62.0	0	64	2w
383	Marna silty clay loam, 0 to 2 percent slopes	12.92	32.79	69.0	0	77	2w
6	Okoboji silty clay loam, 0 to 1 percent slopes	3.7	9.39	59.0	0	75	3w
1555	Nicollet-Guckeen complex, 1 to 3 percent slopes	2.38	6.04	86.0	0	79	1
5507	Corvuso-Brownton complex, 0 to 2 percent slopes	1.76	4.47	72.0	0	61	2w
TOTALS		39.41(*)	100%	65.93	-	70.08	2.03

(\*) Total acres may differ in the second decimal compared to the sum of each acreage soil. This is due to a round error because we only show the acres of each soil with two decimal.





 Boundary





|  Boundary 78.95 ac

SOIL CODE	SOIL DESCRIPTION	ACRES	%	CSR2	CPI	NCCPI	CAP
383	Marna silty clay loam, 0 to 2 percent slopes	49.62	62.86	69.0	0	77	2w
1555	Nicollet-Guckeen complex, 1 to 3 percent slopes	17.01	21.55	86.0	0	79	1
1507	Brownton silty clay loam, 0 to 2 percent slopes	9.81	12.43	62.0	0	64	2w
6	Okoboji silty clay loam, 0 to 1 percent slopes	2.48	3.14	59.0	0	75	3w
5040	Udorthents, loamy (cut and fill land)	0.03	0.04	5.0	0	-	-
TOTALS		78.95(*)	100%	71.46	-	75.73	1.82

(\*) Total acres may differ in the second decimal compared to the sum of each acreage soil. This is due to a round error because we only show the acres of each soil with two decimal.

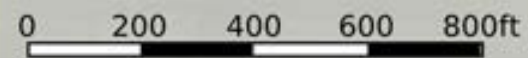
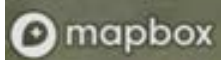







# Knopf Estate

Webster County, Greene County, Iowa, 633 AC +/-



 Boundary

|  Boundary 78.6 ac

SOIL CODE	SOIL DESCRIPTION	ACRES	%	CSR2	CPI	NCCPI	CAP
383	Marna silty clay loam, 0 to 2 percent slopes	41.27	52.51	69.0	0	77	2w
1555	Nicollet-Guckeen complex, 1 to 3 percent slopes	18.75	23.85	86.0	0	79	1
506	Wacousta silty clay loam, depressional, 0 to 1 percent slopes	9.43	12.0	68.0	0	87	3w
5507	Corvuso-Brownton complex, 0 to 2 percent slopes	5.31	6.76	72.0	0	61	2w
1138B	Clarion clay loam, 2 to 5 percent slopes	3.42	4.35	90.0	0	77	2e
1507	Brownton silty clay loam, 0 to 2 percent slopes	0.42	0.53	62.0	0	64	2w
TOTALS		78.6(*)	100%	74.01	-	77.53	1.88

(\*) Total acres may differ in the second decimal compared to the sum of each acreage soil. This is due to a round error because we only show the acres of each soil with two decimal.





**TRACT 5**

**TRACT 6**



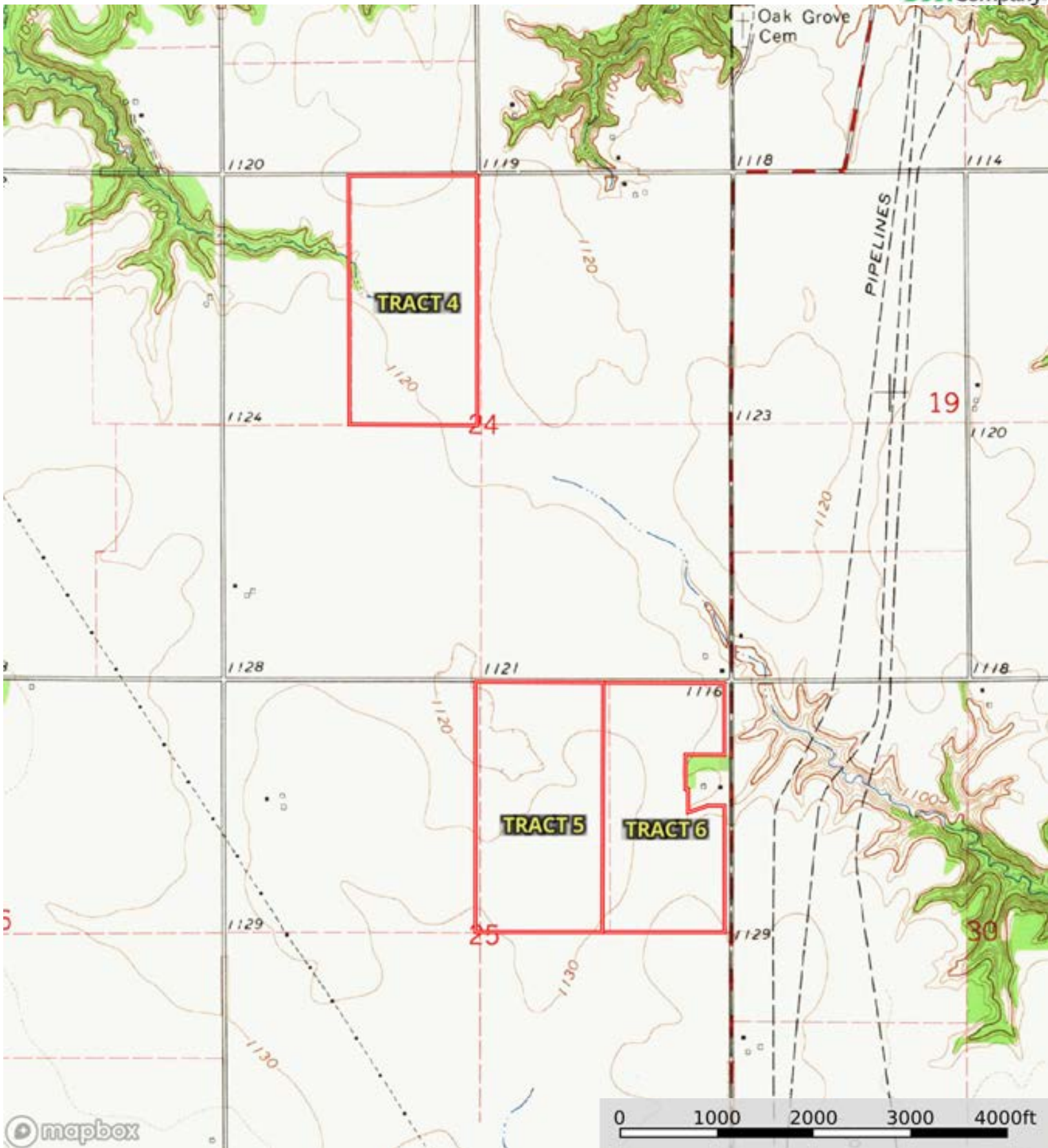
 Boundary


|  Boundary 69.89 ac

SOIL CODE	SOIL DESCRIPTION	ACRES	%	CSR2	CPI	NCCPI	CAP
383	Marna silty clay loam, 0 to 2 percent slopes	46.06	65.9	69.0	0	77	2w
1555	Nicollet-Guckeen complex, 1 to 3 percent slopes	23.23	33.24	86.0	0	79	1
1138B	Clarion clay loam, 2 to 5 percent slopes	0.51	0.73	90.0	0	77	2e
1507	Brownton silty clay loam, 0 to 2 percent slopes	0.09	0.13	62.0	0	64	2w
TOTALS		69.89(*)	100%	74.79	-	77.65	1.67

(\*) Total acres may differ in the second decimal compared to the sum of each acreage soil. This is due to a round error because we only show the acres of each soil with two decimal.






 Boundary



**TRACT 7**



 Boundary

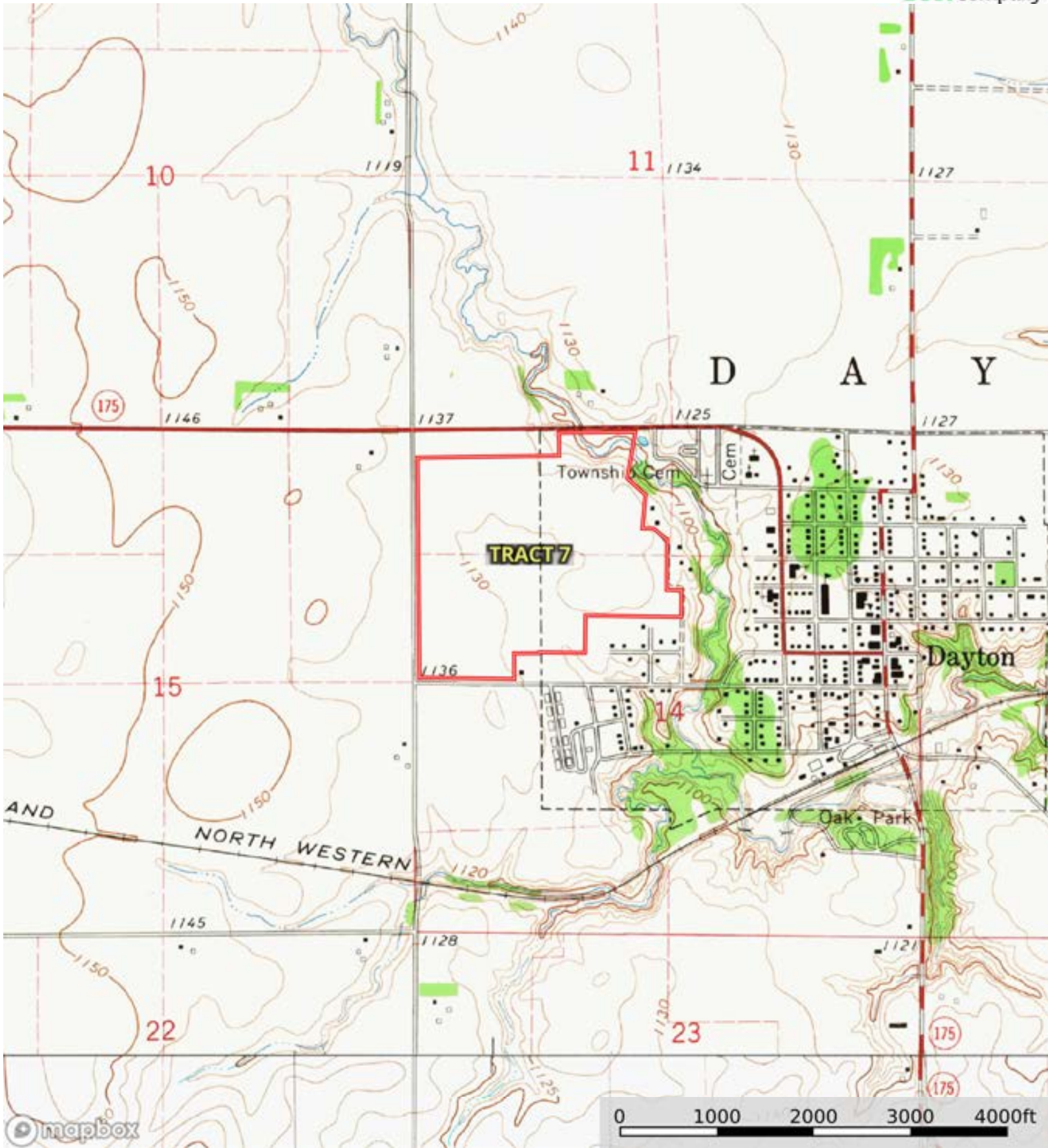


|  Boundary 113.62 ac

SOIL CODE	SOIL DESCRIPTION	ACRES	%	CSR2	CPI	NCCPI	CAP
383	Marna silty clay loam, 0 to 2 percent slopes	59.48	52.34	69.0	0	77	2w
1555	Nicollet-Guckeen complex, 1 to 3 percent slopes	34.18	30.08	86.0	0	79	1
1138B	Clarion clay loam, 2 to 5 percent slopes	12.89	11.34	90.0	0	77	2e
6	Okoboji silty clay loam, 0 to 1 percent slopes	3.48	3.06	59.0	0	75	3w
385	Guckeen clay loam, 1 to 3 percent slopes	3.13	2.75	76.0	86	73	2w
62F	Belview loam, 16 to 30 percent slopes	0.46	0.4	17.0	0	49	6e
TOTALS		113.6 2(*)	100%	76.16	2.37	77.3	1.75

(\*) Total acres may differ in the second decimal compared to the sum of each acreage soil. This is due to a round error because we only show the acres of each soil with two decimal.






 Boundary





 Boundary

|  Boundary 77.03 ac

SOIL CODE	SOIL DESCRIPTION	ACRES	%	CSR2	CPI	NCCPI	CAP
507	Canisteo clay loam, 0 to 2 percent slopes	29.97	38.91	84.0	0	82	2w
48	Knoke mucky silty clay loam, 0 to 1 percent slopes	11.35	14.73	56.0	0	75	3w
6	Okoboji silty clay loam, 0 to 1 percent slopes	8.87	11.51	59.0	0	75	3w
55	Nicollet clay loam, 1 to 3 percent slopes	6.52	8.46	89.0	0	81	1
383	Marna silty clay loam, 0 to 2 percent slopes	6.07	7.88	69.0	0	77	2w
138B	Clarion loam, 2 to 6 percent slopes	3.71	4.82	89.0	0	83	2e
90	Okoboji mucky silt loam, 0 to 1 percent slopes	3.59	4.66	56.0	0	73	3w
508	Calcousta silty clay loam, 0 to 1 percent slopes	2.6	3.38	73.0	0	86	3w
506	Wacousta silty clay loam, 0 to 1 percent slopes	1.57	2.04	74.0	0	88	3w
138C2	Clarion loam, 6 to 10 percent slopes, moderately eroded	1.51	1.96	83.0	0	69	3e
878B	Ocheyedan loam, 2 to 5 percent slopes	1.27	1.65	88.0	0	80	2e
TOTALS		77.03( *)	100%	74.64	-	79.28	2.3









(\*) Total acres may differ in the second decimal compared to the sum of each acreage soil. This is due to a round error because we only show the acres of each soil with two decimal.

## Capability Legend

Increased Limitations and Hazards

Decreased Adaptability and Freedom of Choice Users

Land, Capability

								
	1	2	3	4	5	6	7	8
'Wild Life'	•	•	•	•	•	•	•	•
Forestry	•	•	•	•	•	•	•	
Limited	•	•	•	•	•	•	•	
Moderate	•	•	•	•	•	•		
Intense	•	•	•	•	•			
Limited	•	•	•	•				
Moderate	•	•	•					
Intense	•	•						
Very Intense	•							

### Grazing Cultivation

(c) climatic limitations (e) susceptibility to erosion

(s) soil limitations within the rooting zone (w) excess of water

