


L-2400274
160 Ac
Calhoun County, Iowa

Latitude: 42.342°N
Longitude: 94.8476°W
Imagery Source: USDA NAIP
Soil Data Source: USDA NRCS
Boundaries are Approximate



290th St

Durant Ave



L-2400274
160 Ac
Calhoun County, Iowa

Latitude: 42.365°N
Longitude: 94.8492°W
Imagery Source: USDA NAIP
Soil Data Source: USDA NRCS
Boundaries are Approximate

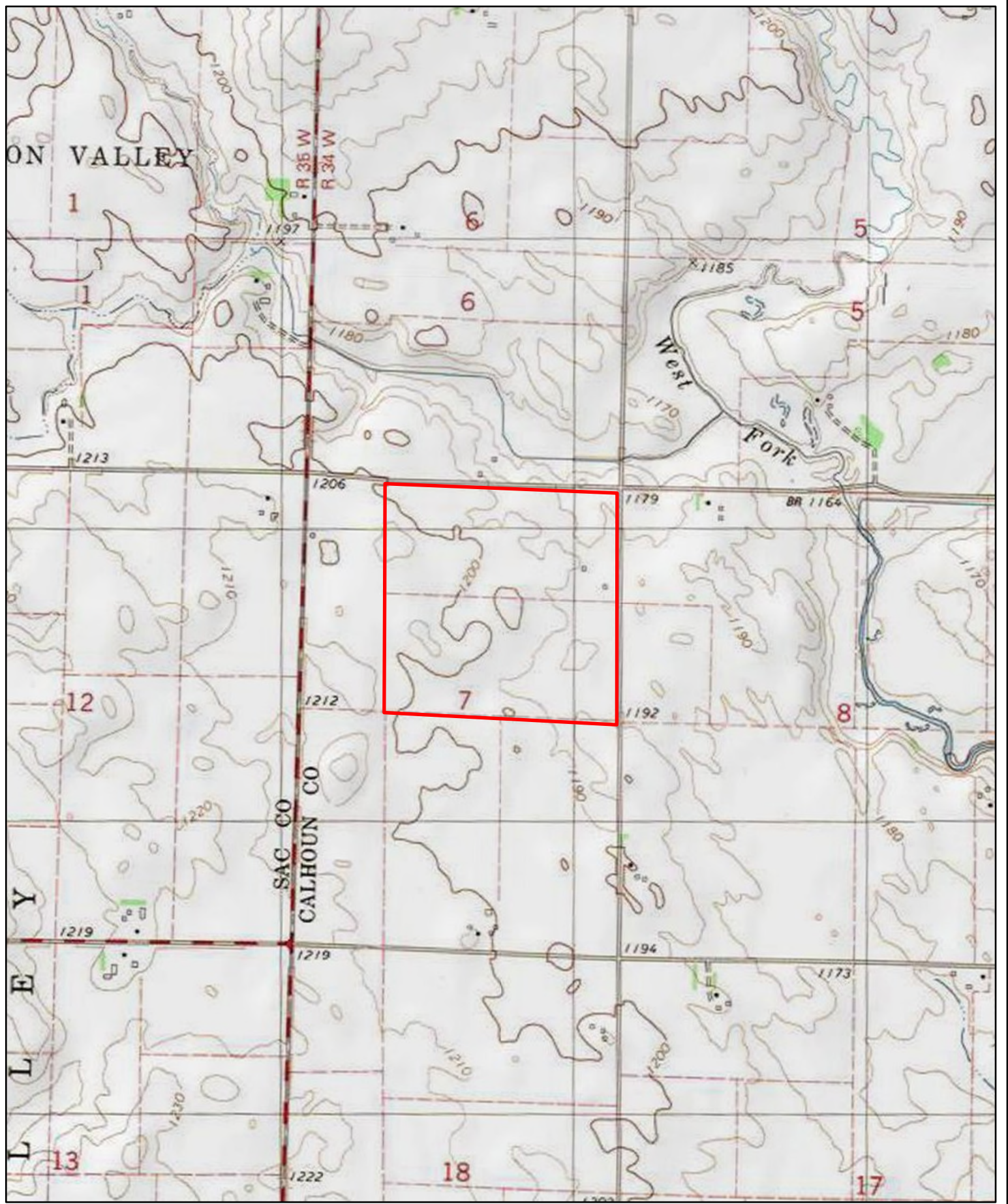


Map Symbol	Name	Non-IRR LCC	CSR2	ACRES
138B	Clarion loam, 2 to 6 percent slopes	2e	89	76
107	Webster clay loam, 0 to 2 percent slopes	2w	86	37.3
55	Nicollet clay loam, 1 to 3 percent slopes	1	89	24.4
507	Canisteo clay loam, 0 to 2 percent slopes	2w	84	10.6
138C2	Clarion loam, 6 to 10 percent slopes, moderately eroded	3e	83	4.1
62C2	Storden loam, 6 to 10 percent slopes, moderately eroded	3e	64	1.1
6	Okoboji silty clay loam, 0 to 1 percent slopes	3w	59	0.7
138C	Clarion loam, 6 to 10 percent slopes	3e	84	0.1
TOTAL			87.5	154.3



L-2400274
160 Ac
Calhoun County, Iowa

Latitude: 42.365°N
Longitude: 94.8492°W
Imagery Source: USDA NAIP
Soil Data Source: USDA NRCS
Boundaries are Approximate



L-2400274
160 Ac
Calhoun County, Iowa

Latitude: 42.365°N
Longitude: 94.8492°W
Imagery Source: USDA NAIP
Soil Data Source: USDA NRCS
Boundaries are Approximate