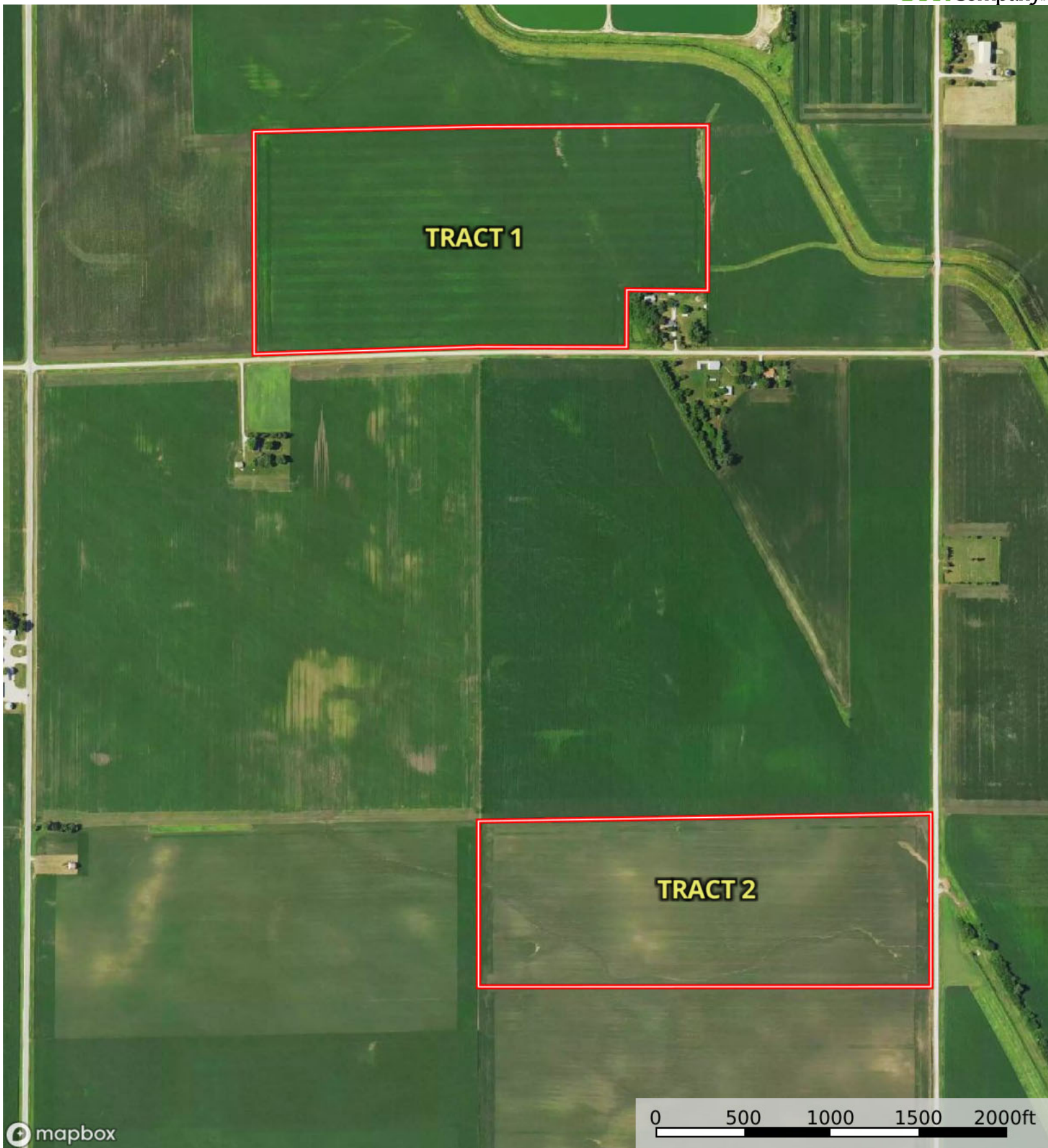
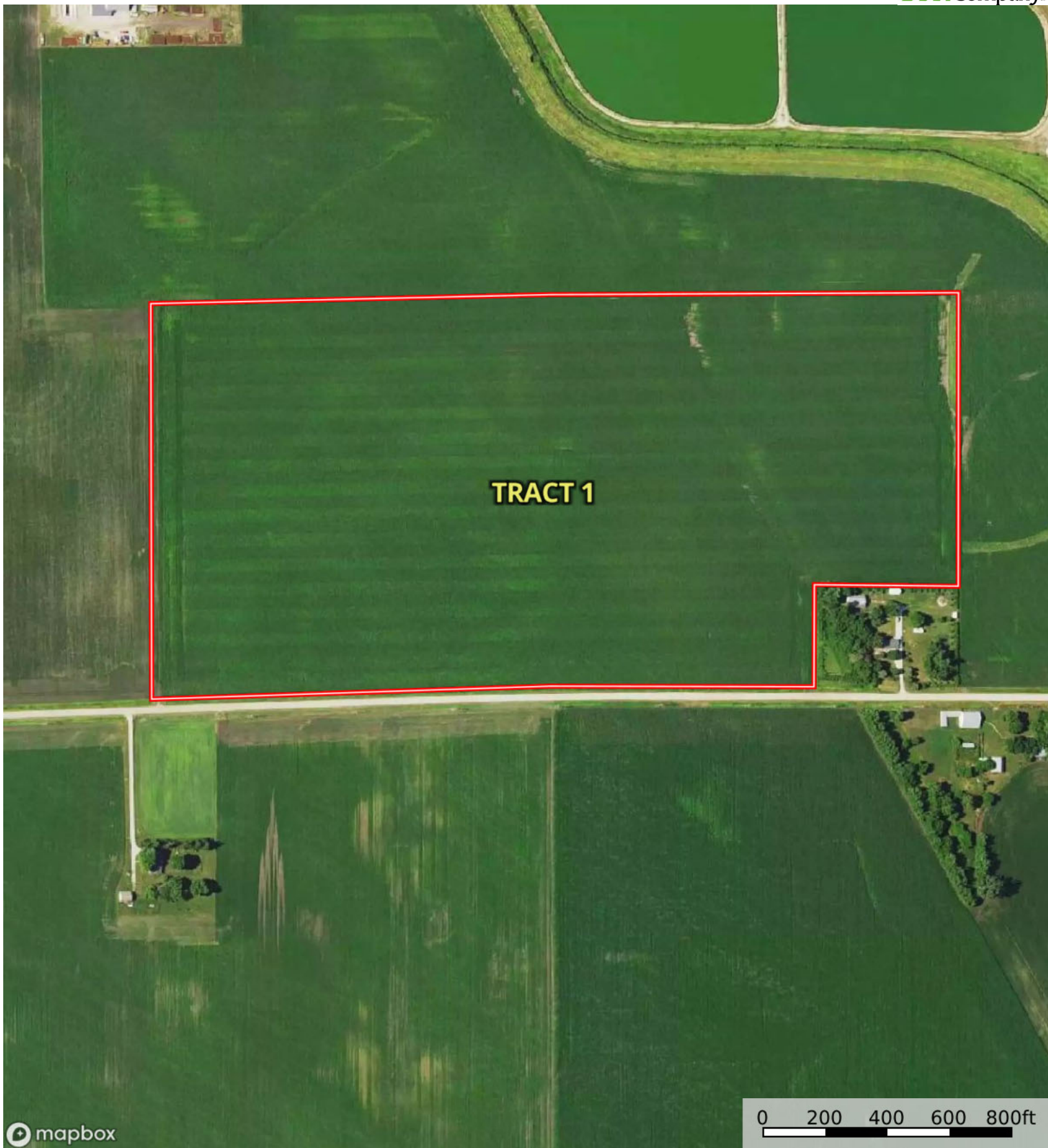
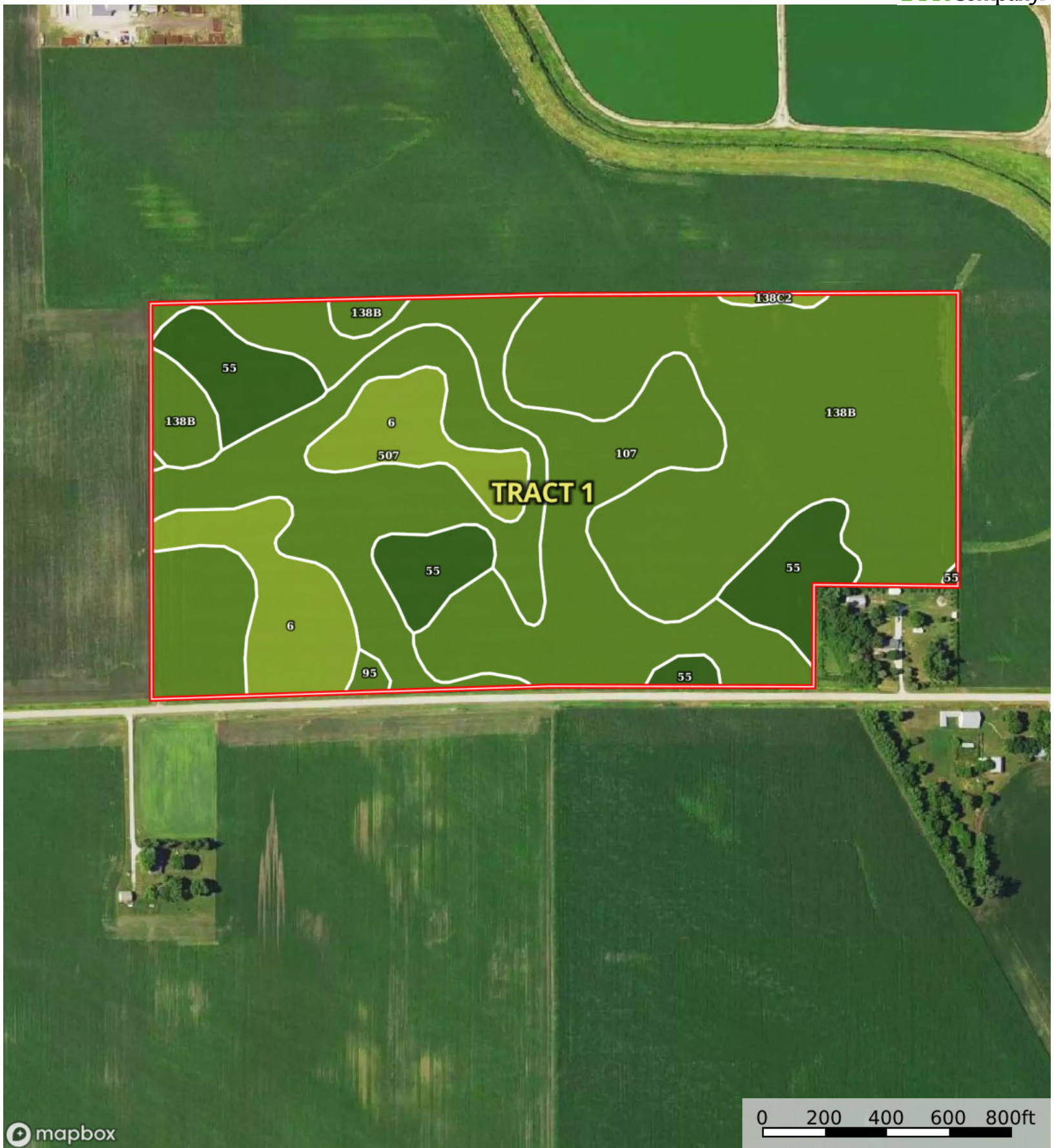


 Boundary







|  Boundary 72.05 ac

SOIL CODE	SOIL DESCRIPTION	ACRES	%	CSR2	CPI	NCCPI	CAP
138B	Clarion loam, 2 to 6 percent slopes	25.3	35.11	89.0	0	83	2e
107	Webster clay loam, 0 to 2 percent slopes	15.6	21.65	86.0	0	83	2w
507	Canisteo clay loam, 0 to 2 percent slopes	14.81	20.56	84.0	0	82	2w
6	Okoboji silty clay loam, 0 to 1 percent slopes	7.94	11.02	59.0	0	76	3w
55	Nicollet clay loam, 1 to 3 percent slopes	7.84	10.88	89.0	0	81	1
95	Harps clay loam, 0 to 2 percent slopes	0.29	0.4	72.0	0	82	2w
138C2	Clarion loam, 6 to 10 percent slopes, moderately eroded	0.27	0.37	83.0	0	69	3e
TOTALS		72.05(*)	100%	83.93	-	81.75	2.01

(*) Total acres may differ in the second decimal compared to the sum of each acreage soil. This is due to a round error because we only show the acres of each soil with two decimal.





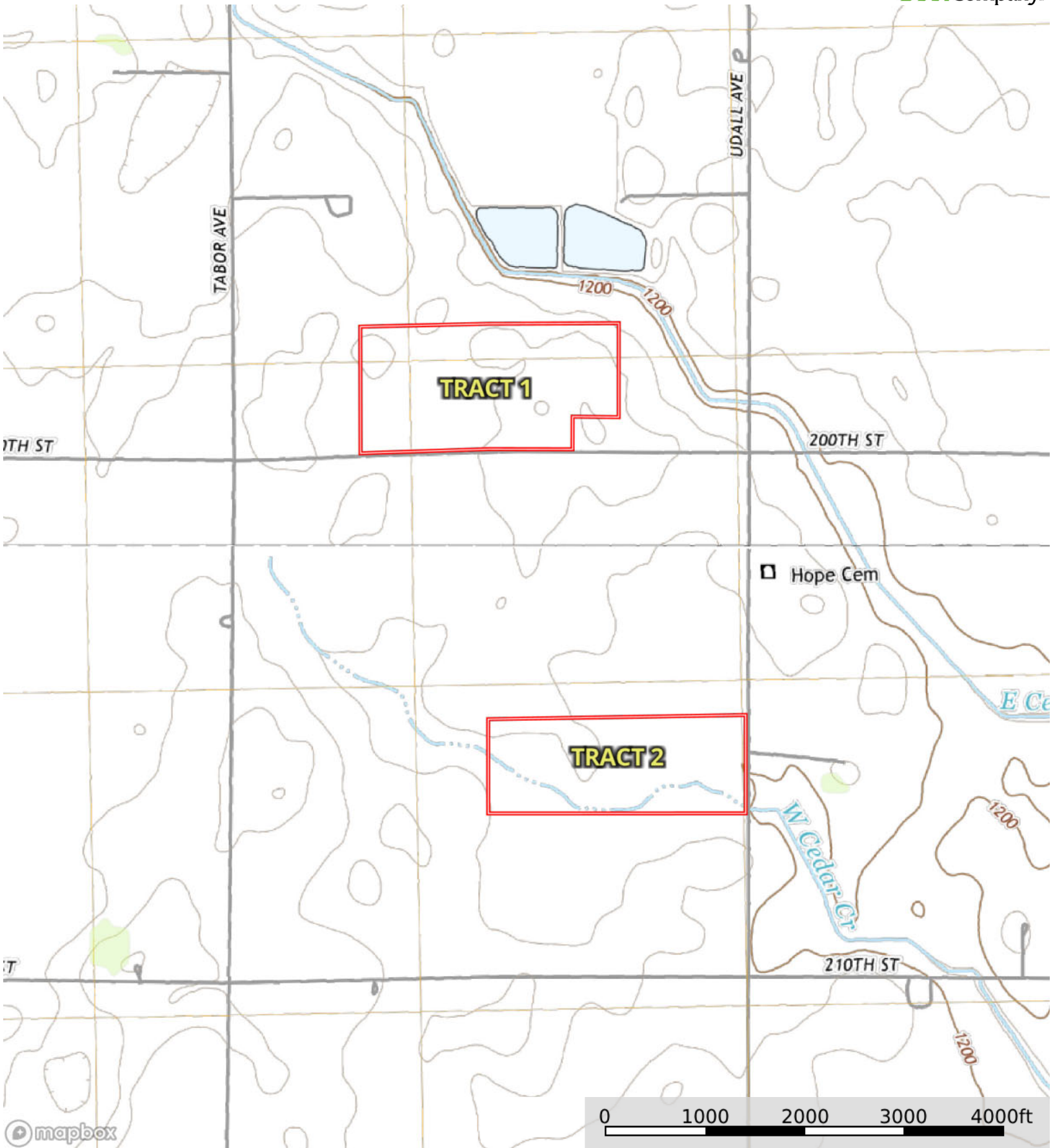


|  Boundary 57.64 ac

SOIL CODE	SOIL DESCRIPTION	ACRES	%	CSR2	CPI	NCCPI	CAP
507	Canisteo clay loam, 0 to 2 percent slopes	22.47	38.98	84.0	0	82	2w
107	Webster clay loam, 0 to 2 percent slopes	20.06	34.8	86.0	0	83	2w
138B	Clarion loam, 2 to 6 percent slopes	6.55	11.36	89.0	0	83	2e
55	Nicollet clay loam, 1 to 3 percent slopes	6.42	11.14	89.0	0	81	1
6	Okoboji silty clay loam, 0 to 1 percent slopes	2.14	3.71	59.0	0	76	3w
TOTALS		57.64(*)	100%	84.88	-	82.11	1.93

(*) Total acres may differ in the second decimal compared to the sum of each acreage soil. This is due to a round error because we only show the acres of each soil with two decimal.





mapbox

Boundary