





Boundary



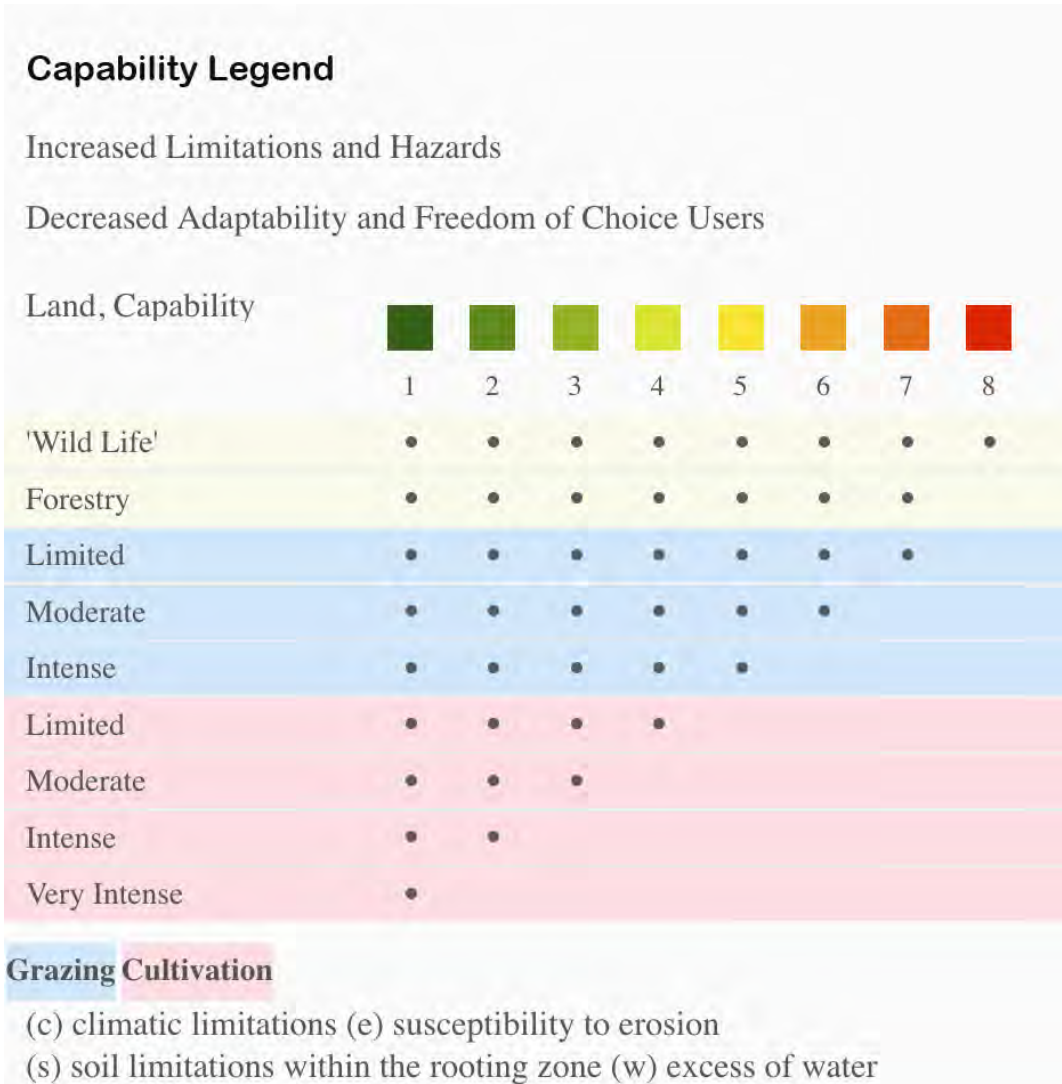


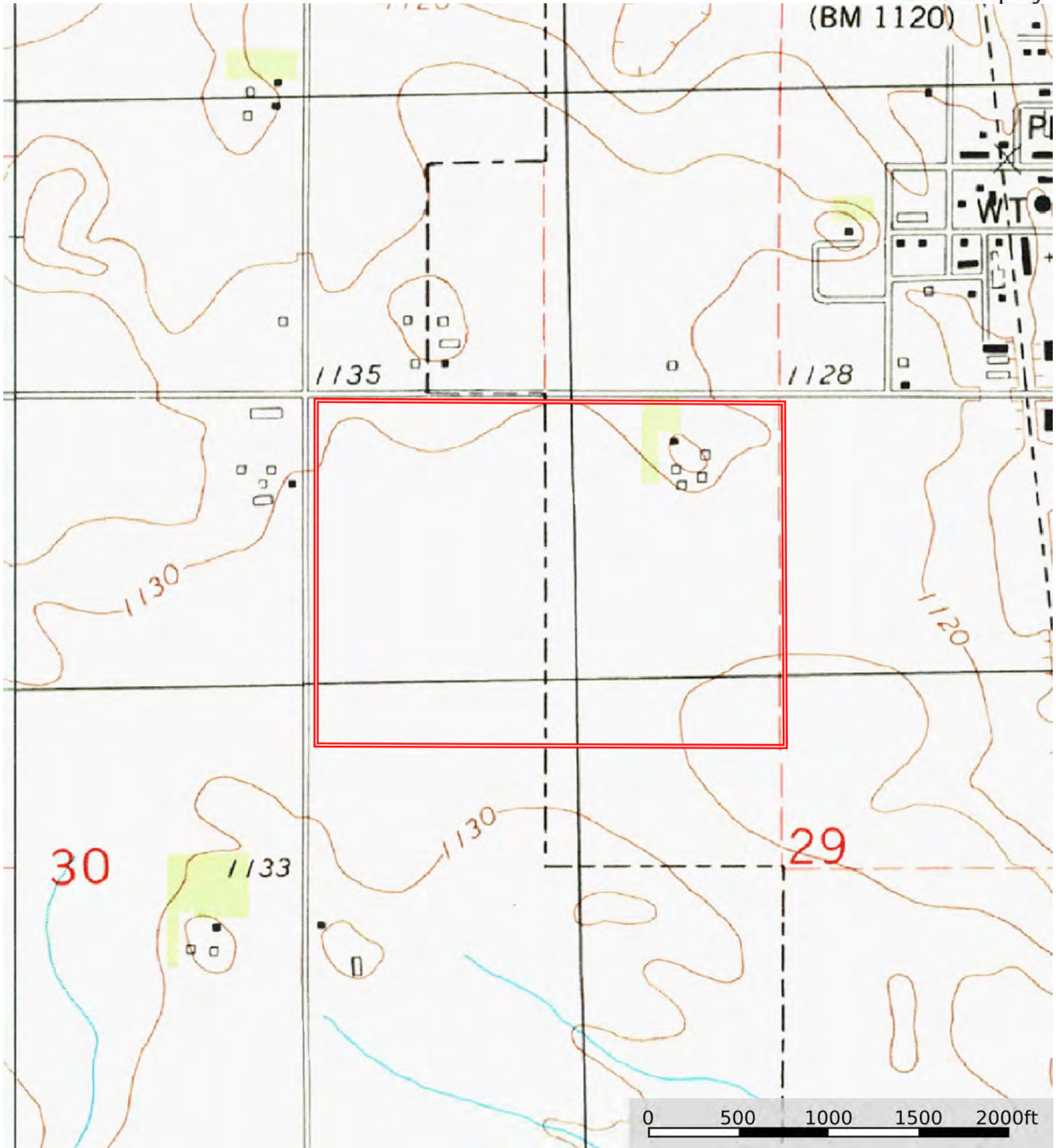
Boundary

| Boundary 114.83 ac

SOIL CODE	SOIL DESCRIPTION	ACRES	%	CSR2	CPI	NCCPI	CAP
507	Canisteo clay loam, 0 to 2 percent slopes	50.7	44.14	84.0	0	82	2w
55	Nicollet clay loam, 1 to 3 percent slopes	19.12	16.65	89.0	0	81	1
48	Knoke mucky silty clay loam, 0 to 1 percent slopes	15.48	13.48	56.0	0	75	3w
95	Harps clay loam, 0 to 2 percent slopes	14.83	12.91	72.0	0	82	2w
4	Knoke silty clay loam, 0 to 1 percent slopes	6.27	5.46	56.0	0	74	3w
107	Webster clay loam, 0 to 2 percent slopes	3.87	3.37	86.0	0	83	2w
138B	Clarion loam, 2 to 6 percent slopes	3.76	3.27	89.0	0	83	2e
62C2	Storden loam, 6 to 10 percent slopes, moderately eroded	0.8	0.7	64.0	0	68	3e
TOTALS		114.8 3(*)	100%	78.05	-	80.4	2.03

(\*) Total acres may differ in the second decimal compared to the sum of each acreage soil. This is due to a round error because we only show the acres of each soil with two decimal.





Boundary

