

New Hope Village Foundation


Greene County, Iowa, 60 AC +/-



 Boundary


New Hope Village Foundation
Greene County, Iowa, 60 AC +/-



 Boundary

New Hope Village Foundation
Greene County, Iowa, 60 AC +/-



 Boundary

Boundary 56.49 ac

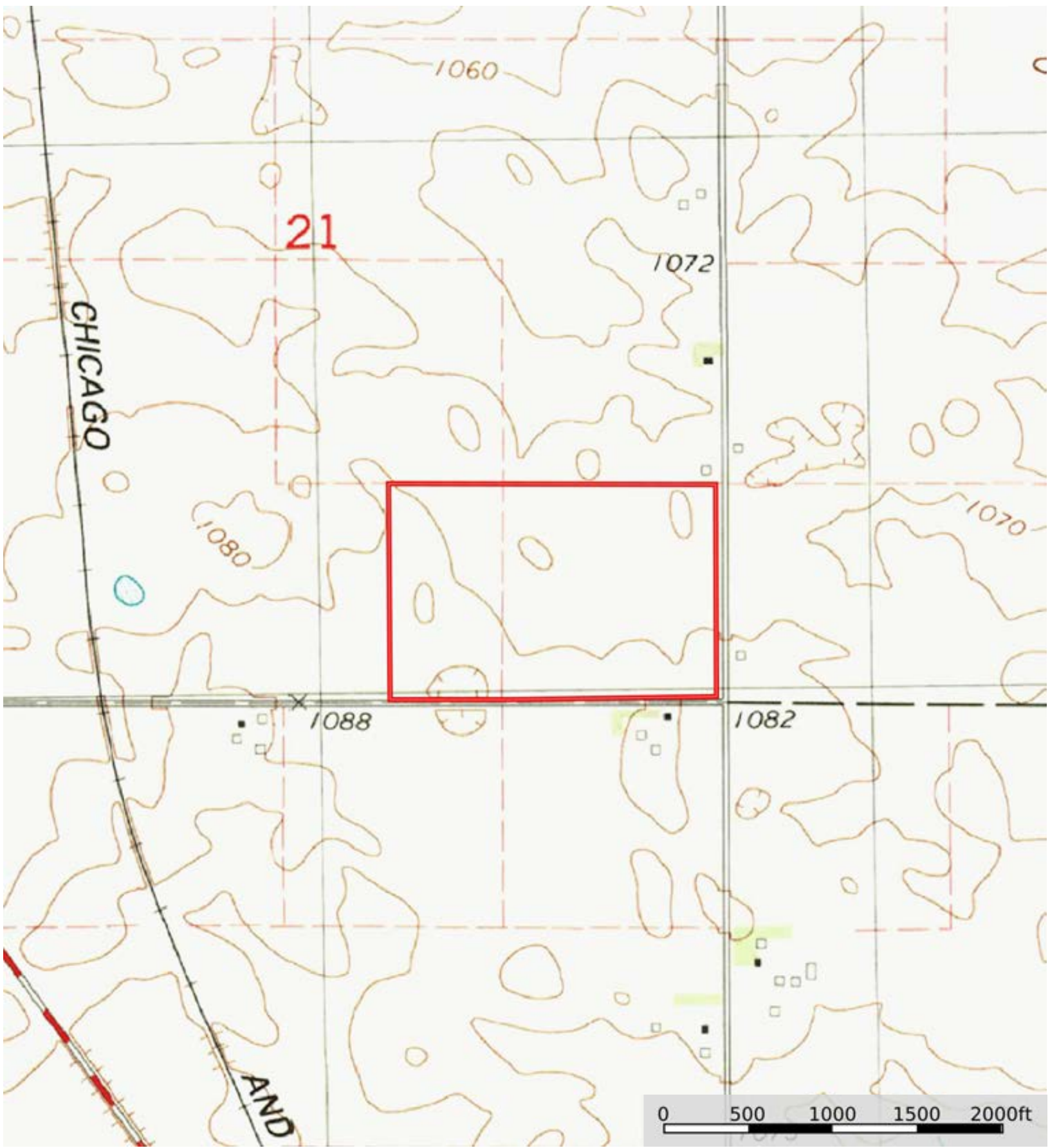
SOIL CODE	SOIL DESCRIPTION	ACRES	%	CSR2	CPI	NCCPI	CAP
L107	Webster clay loam, Bemis moraine, 0 to 2 percent slopes	15.3	27.07	88.0	0	84	2w
L55	Nicollet loam, 1 to 3 percent slopes	12.59	22.28	91.0	0	85	1
L138B2	Clarion loam, Bemis moraine, 2 to 6 percent slopes, moderately eroded	9.27	16.4	85.0	0	69	2e
L138B	Clarion loam, Bemis moraine, 2 to 6 percent slopes	7.89	13.96	88.0	0	80	2e
L507	Canisteo clay loam, Bemis moraine, 0 to 2 percent slopes	6.07	10.74	87.0	0	81	2w
878B	Ocheyedan loam, 2 to 5 percent slopes	2.53	4.48	88.0	0	80	2e
6	Okoboji silty clay loam, 0 to 1 percent slopes	2.04	3.61	59.0	0	75	3w
4	Knoke silty clay loam, 0 to 1 percent slopes	0.8	1.42	56.0	0	74	3w
TOTALS		56.49(*)	100%	86.54	-	80.21	1.83

(*) Total acres may differ in the second decimal compared to the sum of each acreage soil. This is due to a round error because we only show the acres of each soil with two decimal.



New Hope Village Foundation

Greene County, Iowa, 60 AC +/-



 Boundary