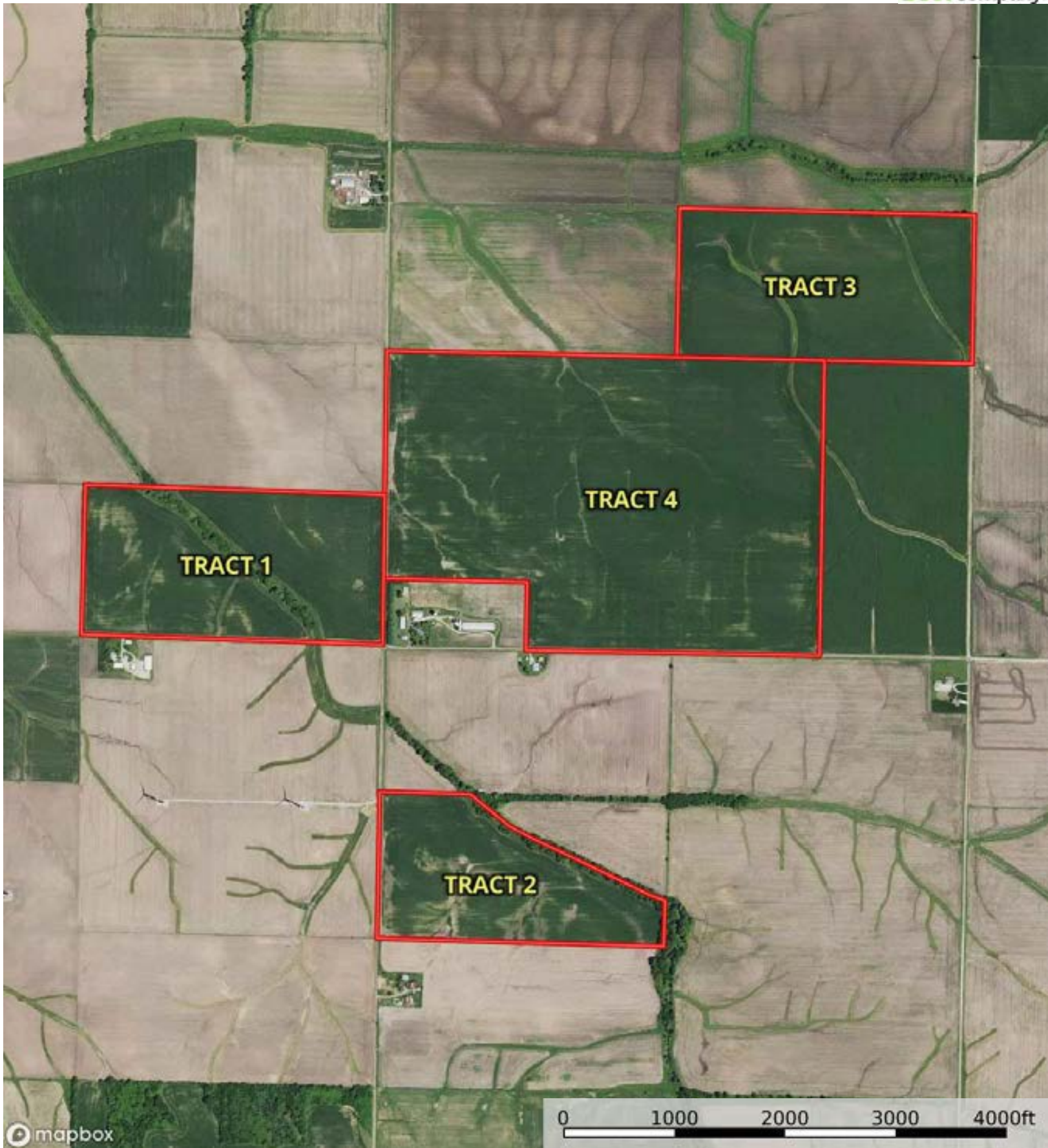


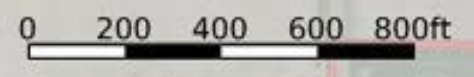
 Boundary



 Boundary



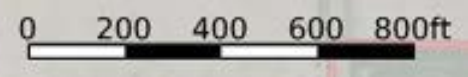
mapbox



Boundary



mapbox



Boundary

|  Boundary 84.67 ac

SOIL CODE	SOIL DESCRIPTION	ACRES	%	PI	NCCPI	CAP
3107A+	Sawmill silt loam, 0 to 2 percent slopes, frequently flooded, overwash	32.64	38.55	126	66	3w
546C2	Keltner silt loam, 5 to 10 percent slopes, eroded	21.66	25.58	109	73	3e
572B	Loran silt loam, 2 to 5 percent slopes	15.5	18.31	120	87	2e
198A	Elburn silt loam, 0 to 2 percent slopes	6.41	7.57	143	91	1
148B	Proctor silt loam, 2 to 5 percent slopes	3.94	4.65	132	88	2e
199B	Plano silt loam, 2 to 5 percent slopes	2.59	3.06	141	93	2e
546B	Keltner silt loam, 2 to 5 percent slopes	1.2	1.42	116	84	2e
572A	Loran silt loam, 0 to 2 percent slopes	0.73	0.86	121	85	1
TOTALS		84.67(*)	100%	122.4 1	75.81	2.56

(\*) Total acres may differ in the second decimal compared to the sum of each acreage soil. This is due to a round error because we only show the acres of each soil with two decimal.





mapbox

Boundary

0 200 400 600 800ft



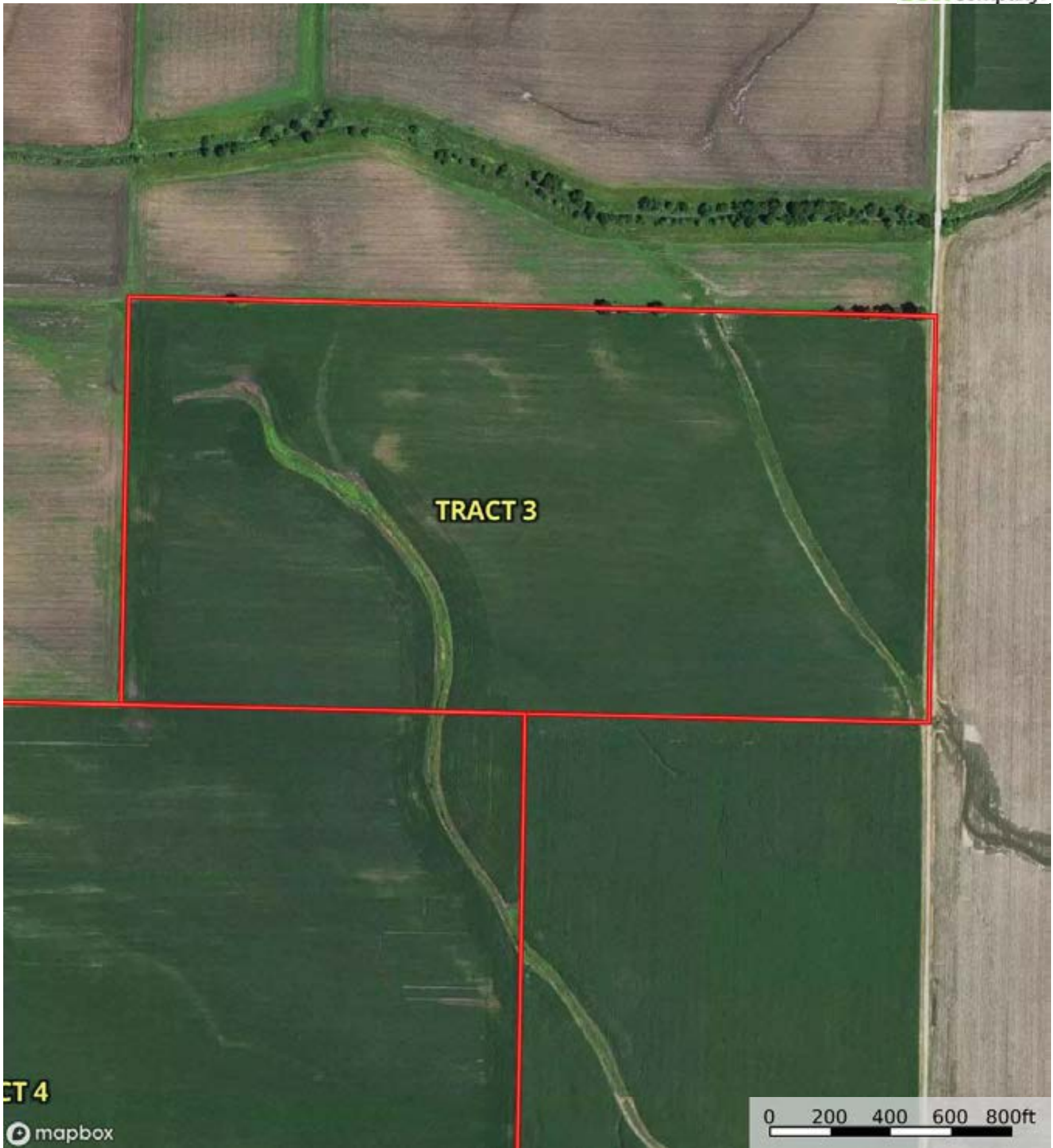
|  Boundary 58.36 ac

SOIL CODE	SOIL DESCRIPTION	ACRES	%	PI	NCCPI	CAP
3107A+	Sawmill silt loam, 0 to 2 percent slopes, frequently flooded, overwash	30.99	53.09	126	66	3w
199B	Plano silt loam, 2 to 5 percent slopes	16.24	27.82	141	93	2e
259C2	Assumption silt loam, 5 to 10 percent slopes, eroded	10.73	18.38	111	88	3e
572B	Loran silt loam, 2 to 5 percent slopes	0.28	0.48	120	87	2e
546B	Keltner silt loam, 2 to 5 percent slopes	0.12	0.21	116	84	2e
TOTALS		58.36(*)	100%	127.35	77.68	2.71

(\*) Total acres may differ in the second decimal compared to the sum of each acreage soil. This is due to a round error because we only show the acres of each soil with two decimal.







TRACT 4

mapbox

0 200 400 600 800ft

Boundary

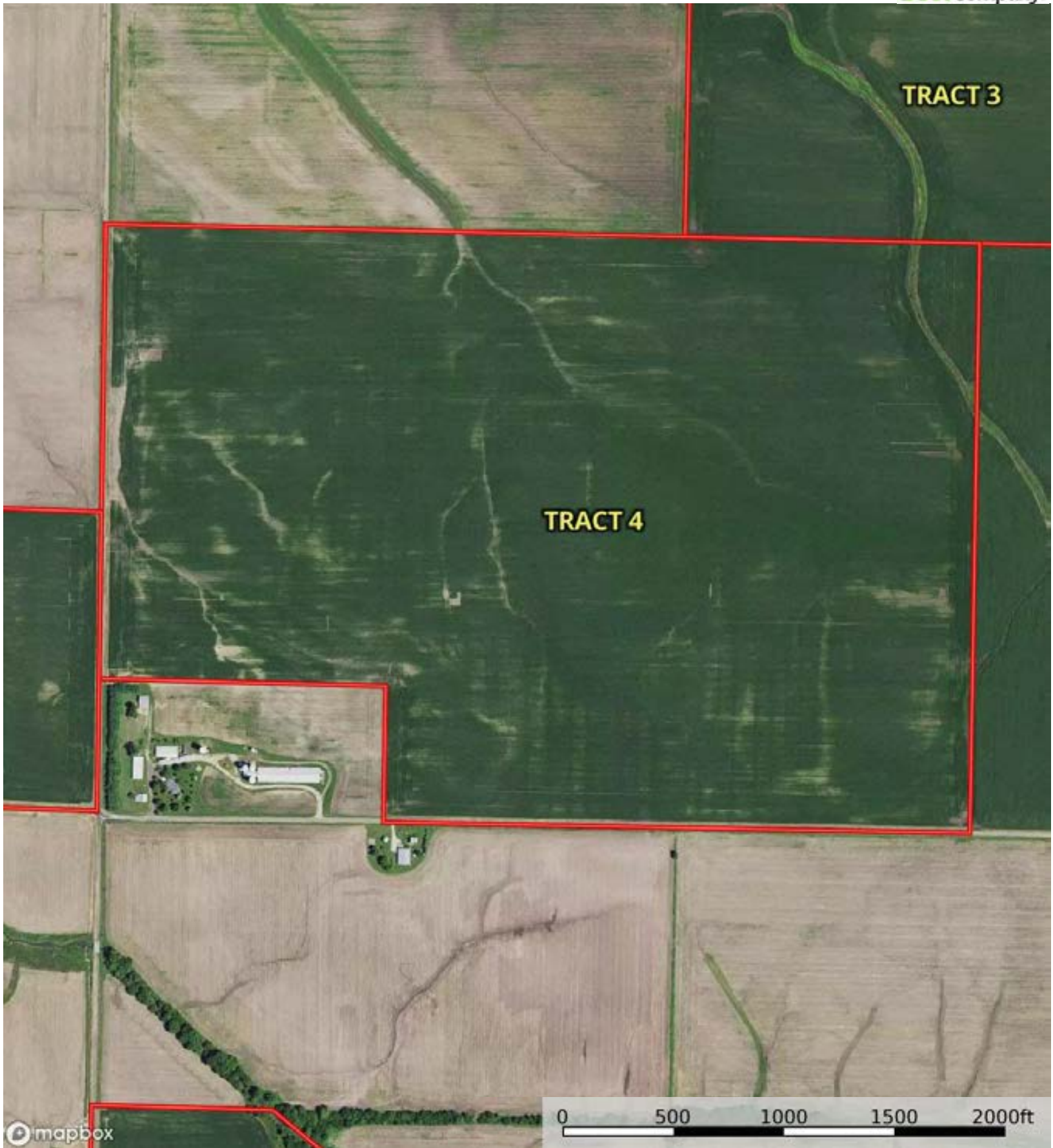


|  Boundary 82.61 ac

SOIL CODE	SOIL DESCRIPTION	ACRES	%	PI	NCCPI	CAP
199C2	Plano silt loam, 5 to 10 percent slopes, eroded	26.19	31.7	132	82	3e
199B	Plano silt loam, 2 to 5 percent slopes	20.35	24.63	141	93	2e
3107A+	Sawmill silt loam, 0 to 2 percent slopes, frequently flooded, overwash	19.93	24.13	126	66	3w
3107A	Sawmill silty clay loam, 0 to 2 percent slopes, frequently flooded	6.91	8.36	125	63	3w
198A	Elburn silt loam, 0 to 2 percent slopes	5	6.05	143	91	1
86B	Oscos silt loam, 2 to 5 percent slopes	3.31	4.01	138	92	2e
43A	Ipava silt loam, 0 to 2 percent slopes	0.47	0.57	142	91	1
152A	Drummer silty clay loam, 0 to 2 percent slopes	0.25	0.3	144	83	2w
3284A	Tice silty clay loam, 0 to 2 percent slopes, frequently flooded	0.2	0.24	134	81	3w
TOTALS		82.61(*)	100%	133.19	80.26	2.58

(\*) Total acres may differ in the second decimal compared to the sum of each acreage soil. This is due to a round error because we only show the acres of each soil with two decimal.

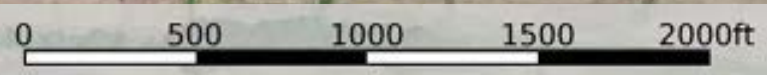




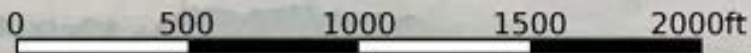
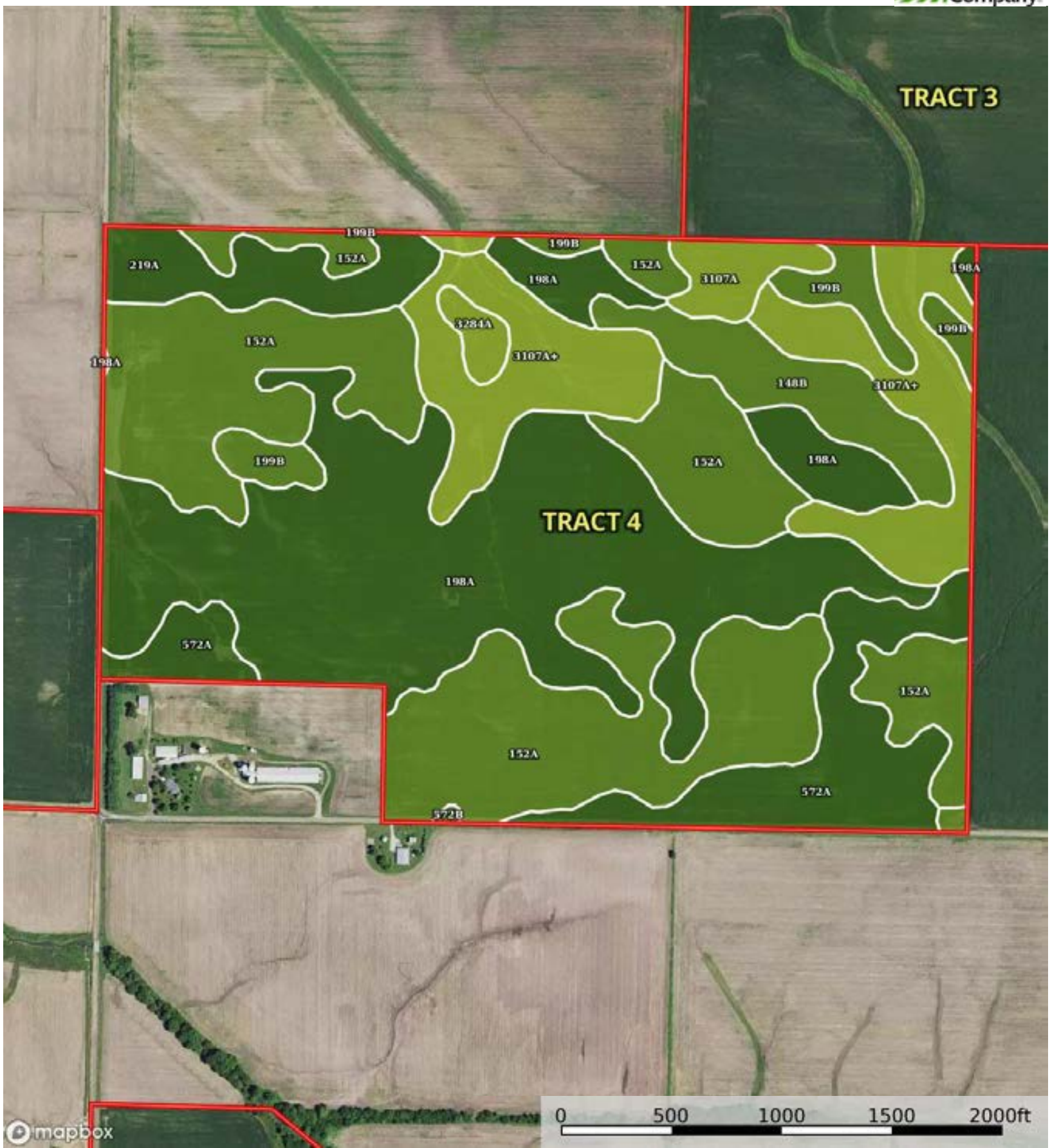
**TRACT 4**

**TRACT 3**

mapbox



Boundary



mapbox

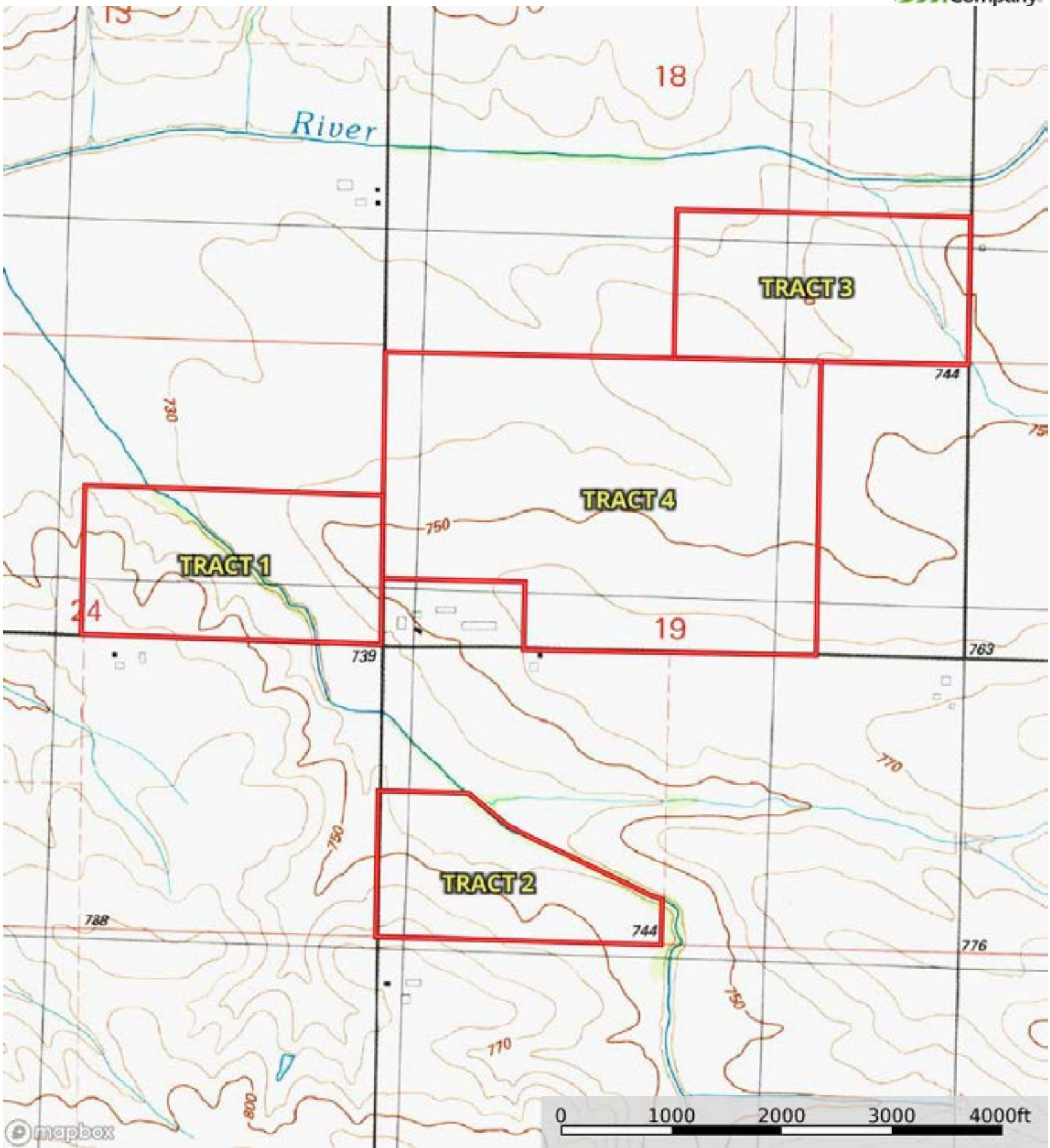
Boundary

**Boundary 225.26 ac**

SOIL CODE	SOIL DESCRIPTION	ACRES	%	PI	NCCPI	CAP
198A	Elburn silt loam, 0 to 2 percent slopes	73.09	32.45	143	91	1
152A	Drummer silty clay loam, 0 to 2 percent slopes	69.45	30.83	144	83	2w
3107A+	Sawmill silt loam, 0 to 2 percent slopes, frequently flooded, overwash	28.84	12.8	126	66	3w
572A	Loran silt loam, 0 to 2 percent slopes	20.43	9.07	121	85	1
148B	Proctor silt loam, 2 to 5 percent slopes	10.13	4.5	132	88	2e
219A	Millbrook silt loam, 0 to 2 percent slopes	9.39	4.17	129	92	1
199B	Plano silt loam, 2 to 5 percent slopes	6.98	3.1	141	93	2e
3107A	Sawmill silty clay loam, 0 to 2 percent slopes, frequently flooded	4.59	2.04	125	63	3w
3284A	Tice silty clay loam, 0 to 2 percent slopes, frequently flooded	1.84	0.82	134	81	3w
572B	Loran silt loam, 2 to 5 percent slopes	0.52	0.23	120	87	2e
TOTALS		225.26(*)	100%	137.5	84.1	1.7

(\*) Total acres may differ in the second decimal compared to the sum of each acreage soil. This is due to a round error because we only show the acres of each soil with two decimal.





 Boundary