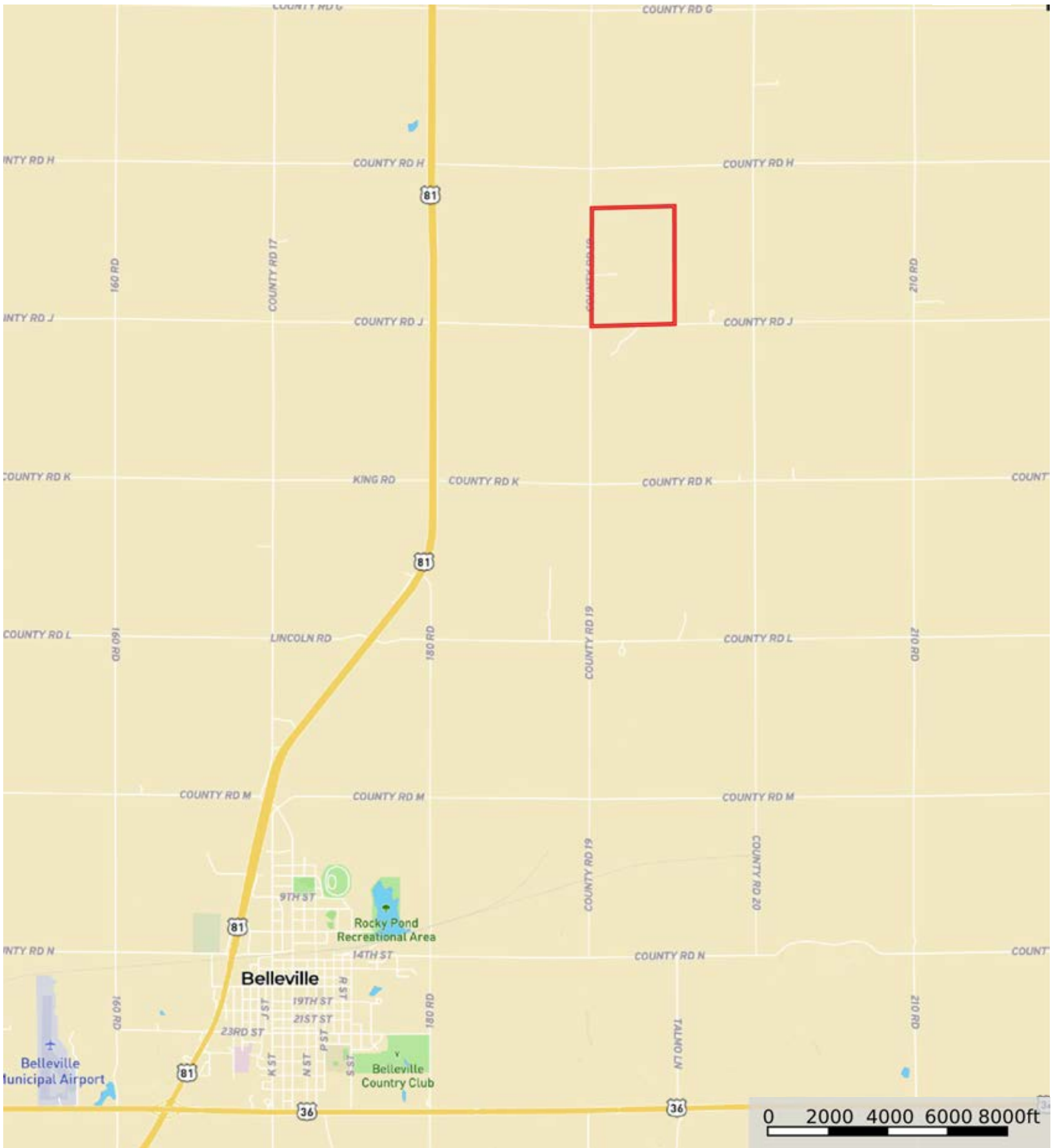

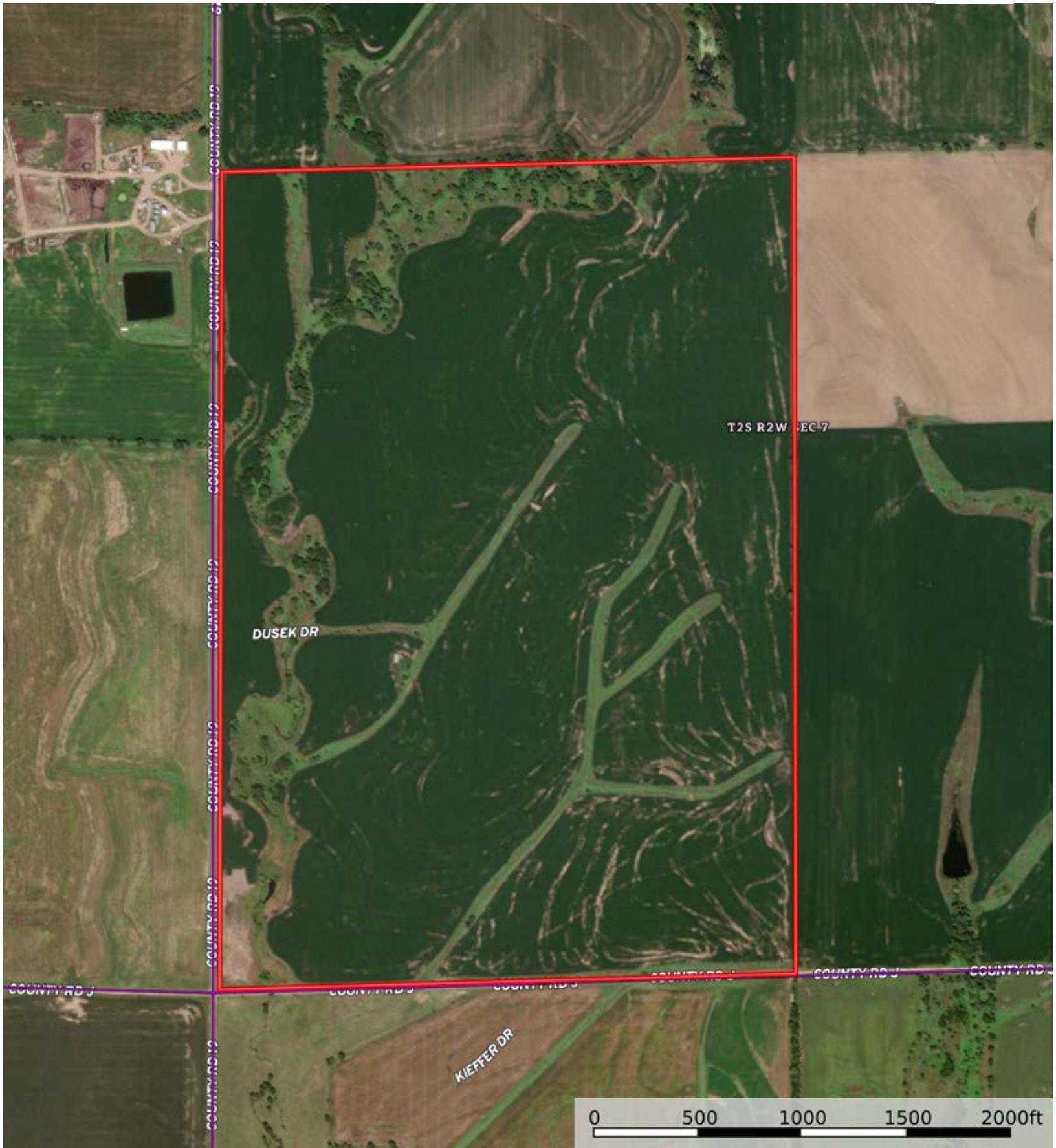



Kenneth Schultz

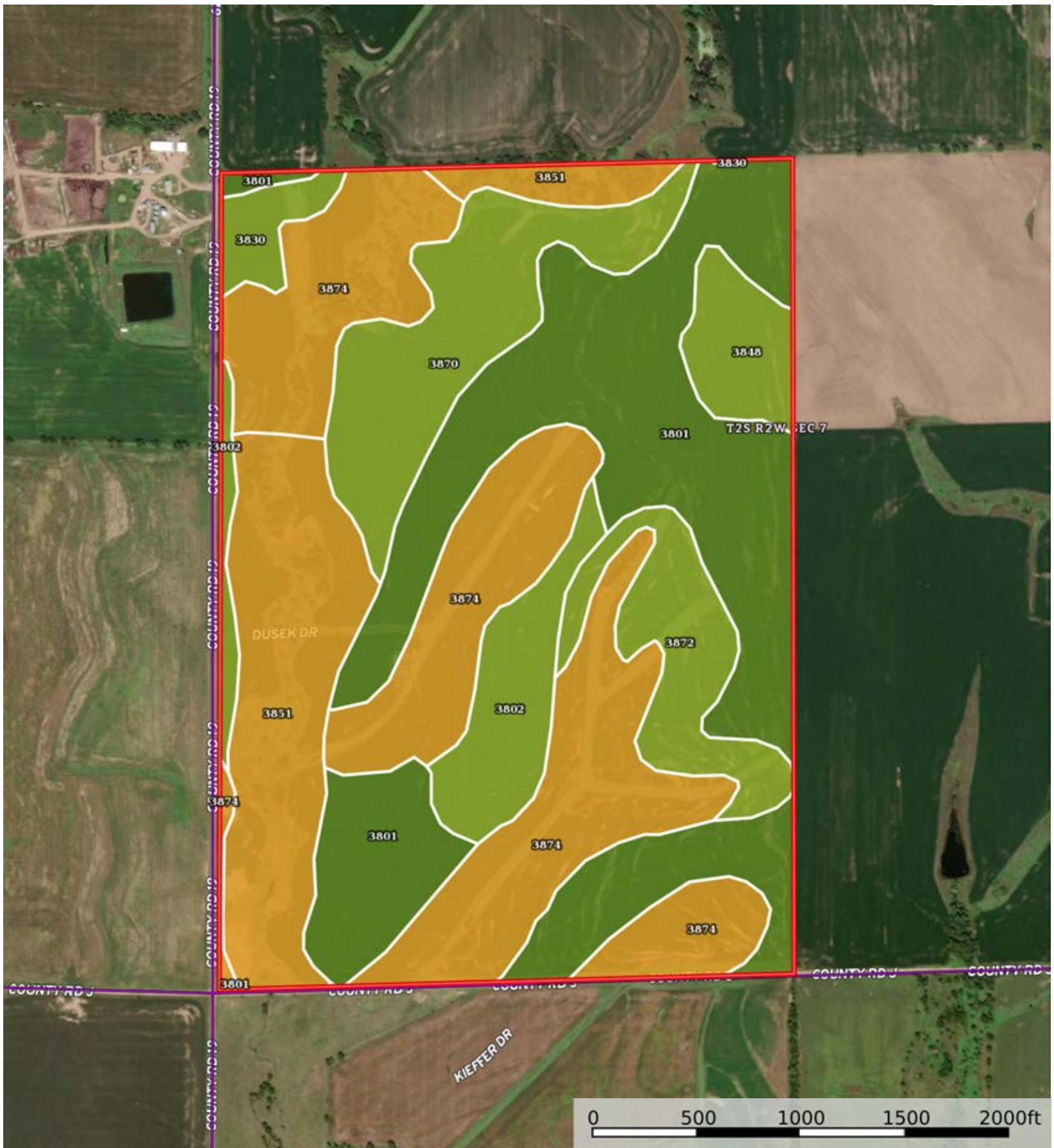
Republic County, Kansas, 249.8 AC +/-




 Boundary



 Boundary



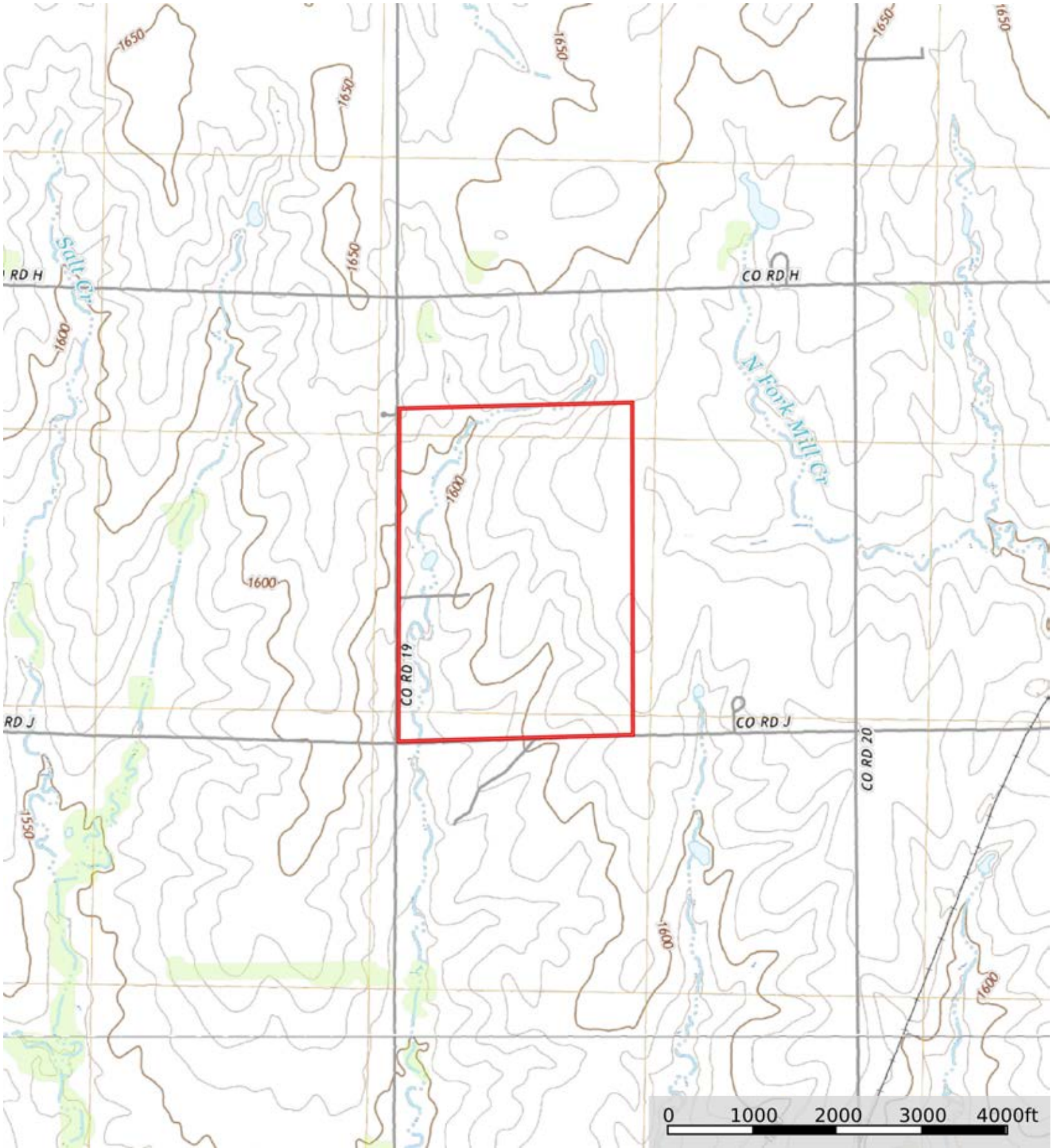
 Boundary


Boundary 249.55 ac

SOIL CODE	SOIL DESCRIPTION	ACRES	%	CPI	NCCPI	CAP
3801	Crete silt loam, 1 to 3 percent slopes, loess plains and breaks	77.26	30.96	0	64	2e
3874	Hastings-Hobbs complex, 0 to 25 percent slopes	70.33	28.18	0	67	6e
3851	Geary-Hobbs silt loams, 0 to 30 percent slopes	34.61	13.87	0	67	6e
3870	Hastings silty clay loam, 3 to 7 percent slopes, eroded	24.89	9.97	0	59	3e
3802	Crete silty clay loam, 3 to 7 percent slopes, eroded, loess plains and breaks	15.17	6.08	0	55	3e
3872	Hastings silty clay loam, 3 to 7 percent slopes, severely eroded	14.99	6.01	0	55	3e
3848	Geary silty clay loam, 3 to 7 percent slopes, severely eroded	7.87	3.15	0	57	3e
3830	Crete silty clay loam, 3 to 7 percent slopes	4.43	1.78	0	62	3e
TOTALS		249.55(*)	100%	-	63.42	3.95

(*) Total acres may differ in the second decimal compared to the sum of each acreage soil. This is due to a round error because we only show the acres of each soil with two decimal.





 Boundary