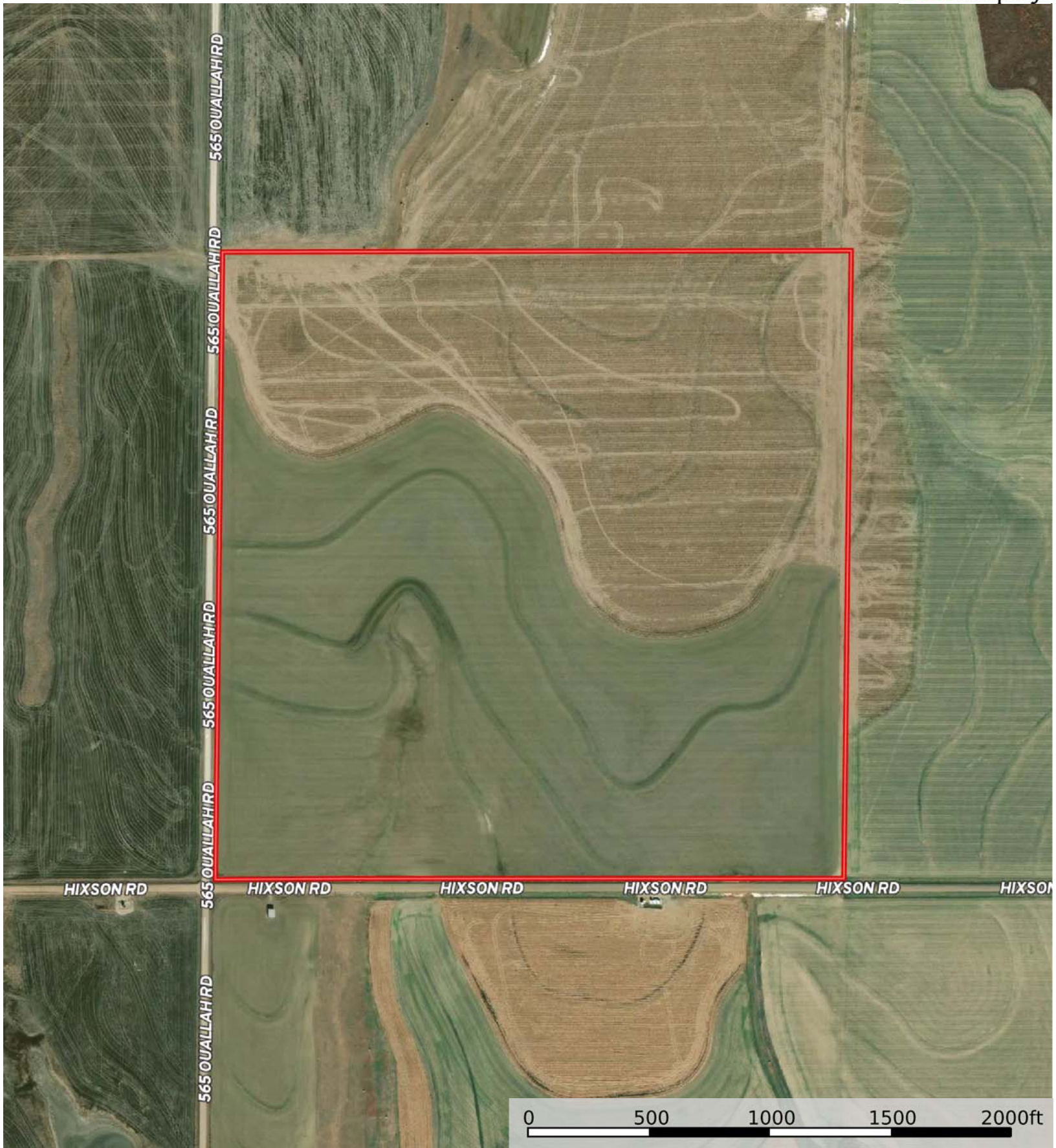
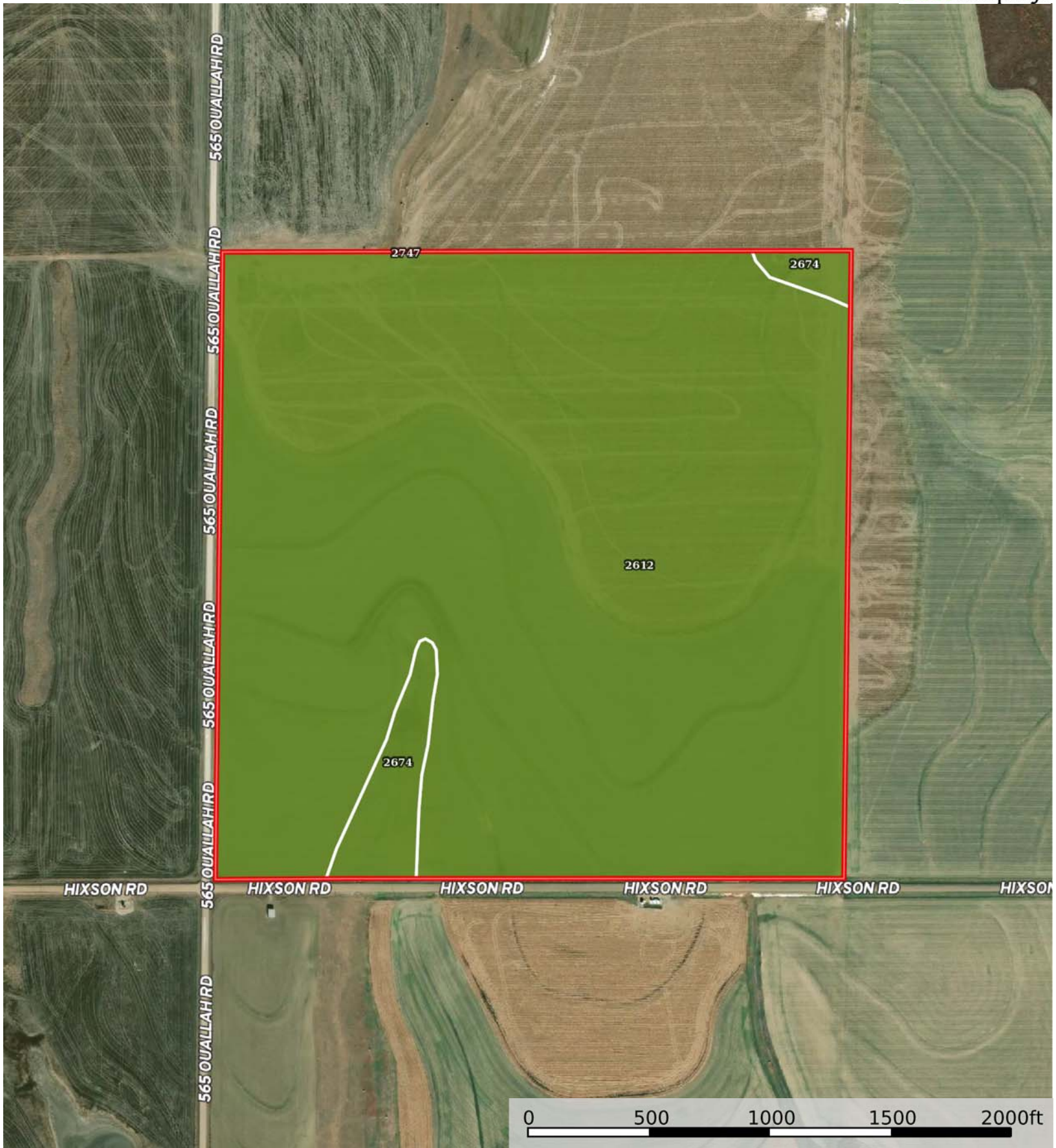


 Boundary

L-2300218

Trego County, Kansas, 160 AC +/-





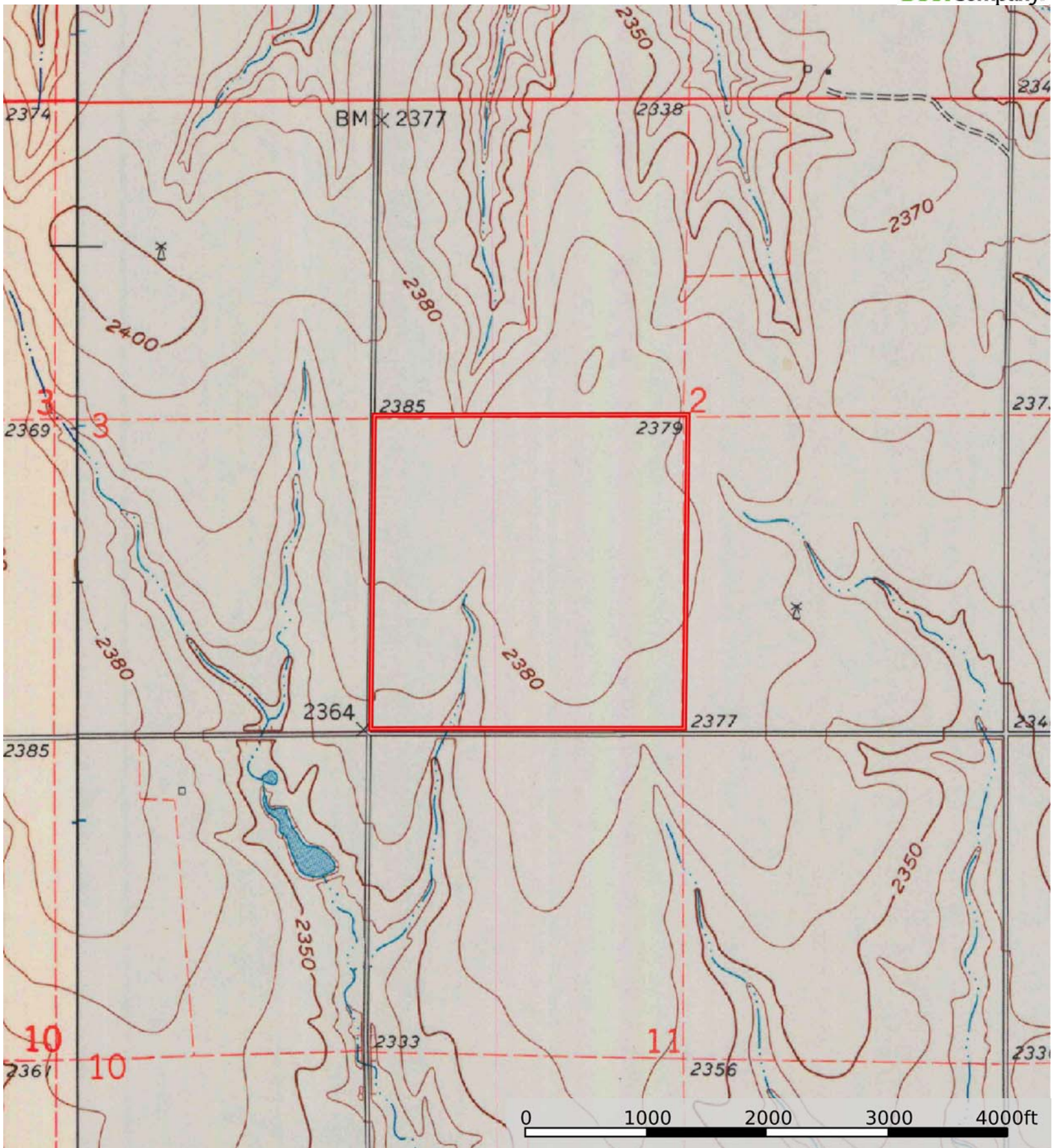
 Boundary

|  Boundary 155.87 ac

SOIL CODE	SOIL DESCRIPTION	ACRES	%	CPI	NCCPI	CAP
2612	Harney silt loam, 0 to 1 percent slopes	149.66	96.01	0	71	2c
2674	Holdrege silt loam, 1 to 3 percent slopes, plains and breaks	6.19	3.97	0	78	2e
2747	Penden clay loam, 3 to 7 percent slopes	0.02	0.01	0	64	3e
TOTALS		155.87(*)	100%	-	71.27	2.0

(\*) Total acres may differ in the second decimal compared to the sum of each acreage soil. This is due to a round error because we only show the acres of each soil with two decimal.





 Boundary