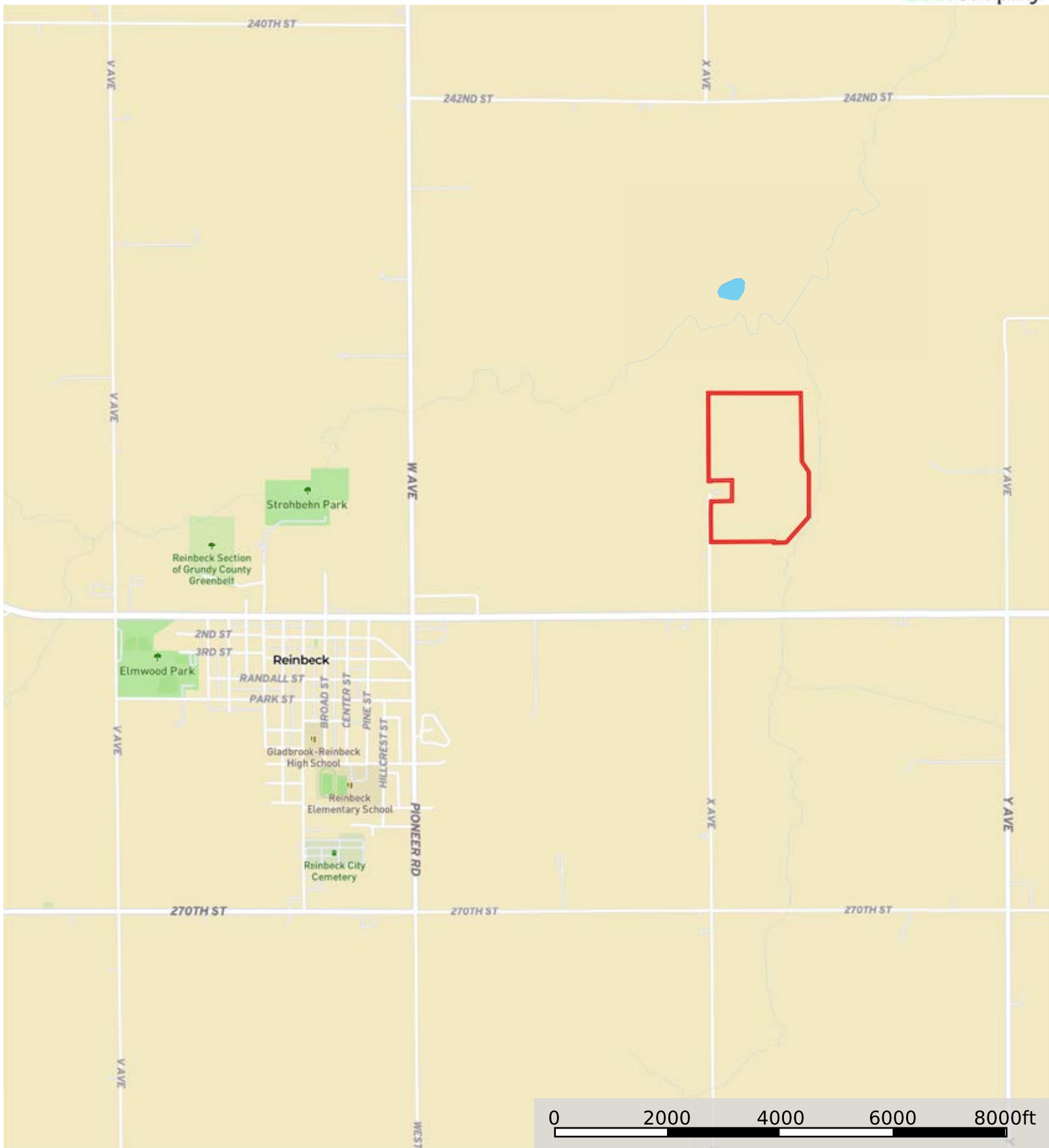



 Boundary



 Boundary




 Boundary



Google

Boundary

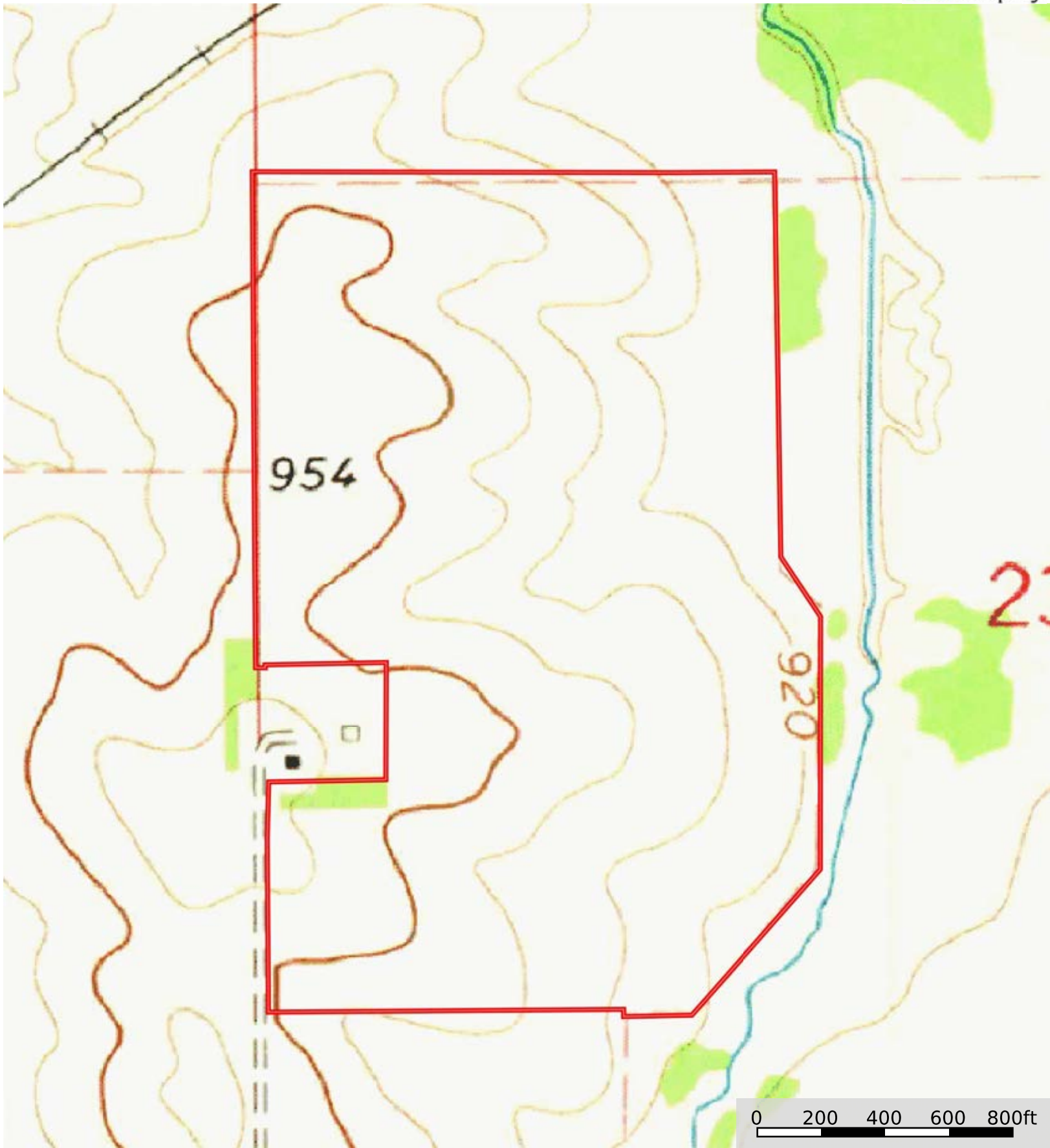
Thomas Schutter

 The information contained herein was obtained from sources deemed to be reliable. Land id™ Services makes no warranties or guarantees as to the completeness or accuracy thereof.

|  Boundary 97.34 ac

SOIL CODE	SOIL DESCRIPTION	ACRES	%	CSR2	CPI	NCCPI	CAP
377B	Dinsdale silty clay loam, 2 to 5 percent slopes	25.82	26.53	94.0	0	88	2e
120B	Tama silty clay loam, 2 to 5 percent slopes	25.32	26.01	95.0	0	97	2e
428B	Ely silty clay loam, 2 to 5 percent slopes	20.21	20.76	88.0	0	91	2e
11B	Colo-Ely complex, 0 to 5 percent slopes	9.95	10.22	86.0	0	92	2w
133	Colo silty clay loam, 0 to 2 percent slopes, occasionally flooded	5.19	5.33	78.0	0	78	2w
120C	Tama silty clay loam, 5 to 9 percent slopes	4.13	4.24	90.0	0	93	3e
1226	Lawler loam, 0 to 2 percent slopes, rarely flooded	2.97	3.05	59.0	0	87	2s
C133	Colo silty clay loam, channeled, 0 to 2 percent slopes, frequently flooded	2.41	2.48	5.0	0	6	2w
43	Bremer silty clay loam, 0 to 2 percent slopes, rarely flooded	1.34	1.38	79.0	0	78	2w
TOTALS		97.34(*)	100%	87.7	-	88.85	2.04

(*) Total acres may differ in the second decimal compared to the sum of each acreage soil. This is due to a round error because we only show the acres of each soil with two decimal.



 Boundary