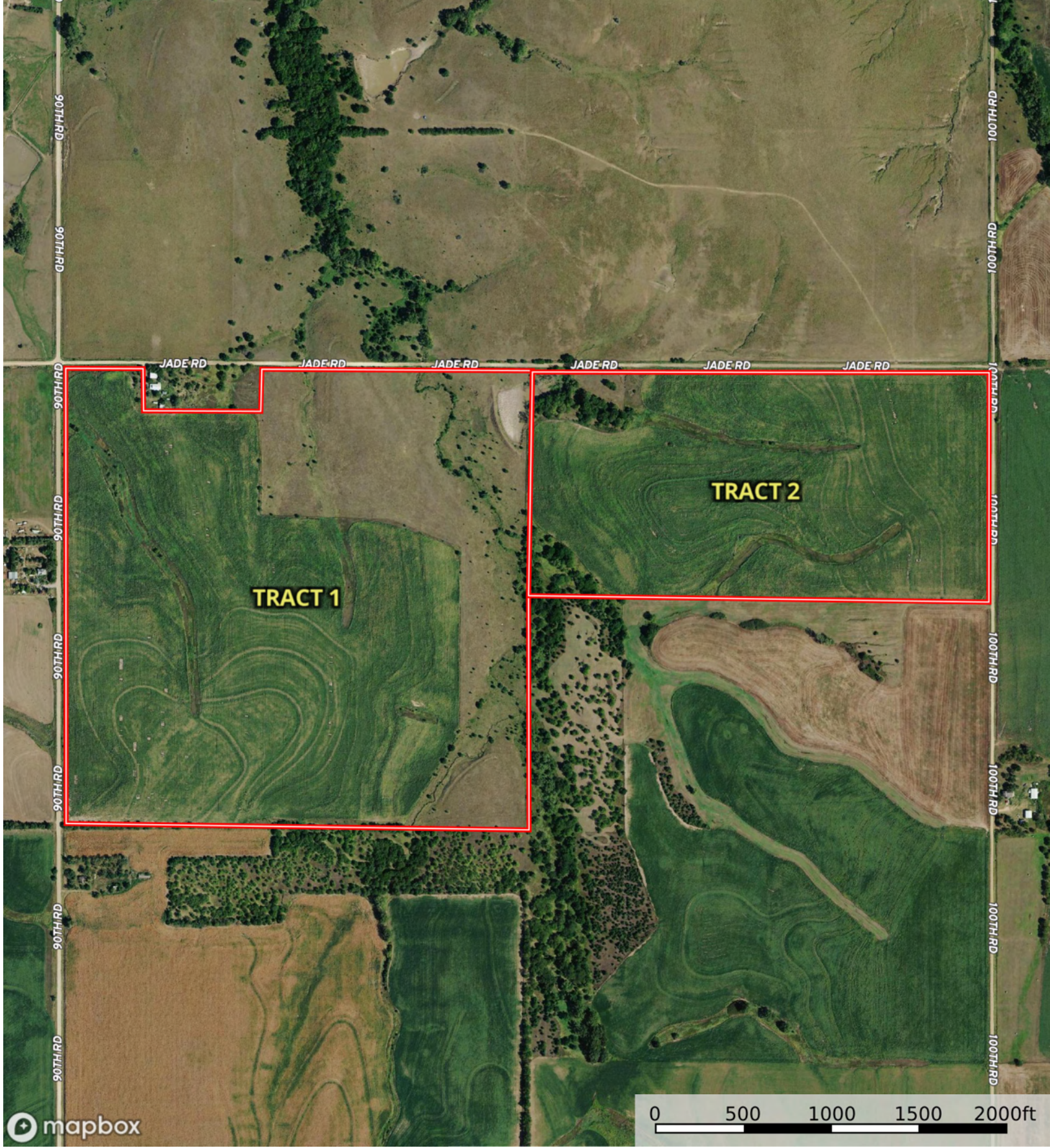


 Boundary



 Boundary



Boundary 154.84 ac

SOIL CODE	SOIL DESCRIPTION	ACRES	%	CPI	NCCPI	CAP
3870	Hastings silty clay loam, 3 to 7 percent slopes, eroded	53.73	34.7	0	58	3e
3802	Crete silty clay loam, 3 to 7 percent slopes, eroded, loess plains and breaks	33.35	21.54	0	54	3e
4715	Kipson soils, 5 to 30 percent slopes	31.44	20.3	0	23	6s
3801	Crete silt loam, 1 to 3 percent slopes, loess plains and breaks	16.47	10.64	0	63	2e
3874	Hastings-Hobbs complex, 0 to 25 percent slopes	12.04	7.78	0	66	6e
3868	Hastings silt loam, 3 to 7 percent slopes	3.98	2.57	0	68	3e
3866	Hastings silt loam, 1 to 3 percent slopes	3.22	2.08	0	68	2e
2522	Armo silt loam, 3 to 7 percent slopes	0.55	0.36	0	55	3e
2956	Wakeen silty clay loam, 3 to 7 percent slopes	0.06	0.04	0	47	4e
TOTALS		154.84(*)	100%	-	51.63	3.72

(*) Total acres may differ in the second decimal compared to the sum of each acreage soil. This is due to a round error because we only show the acres of each soil with two decimal.





mapbox

Boundary

Boundary 77.71 ac

SOIL CODE	SOIL DESCRIPTION	ACRES	%	CPI	NCCPI	CAP
3870	Hastings silty clay loam, 3 to 7 percent slopes, eroded	31.65	40.73	0	58	3e
3802	Crete silty clay loam, 3 to 7 percent slopes, eroded, loess plains and breaks	17.54	22.57	0	54	3e
3801	Crete silt loam, 1 to 3 percent slopes, loess plains and breaks	11.49	14.79	0	63	2e
4715	Kipson soils, 5 to 30 percent slopes	6.42	8.26	0	23	6s
2956	Wakeen silty clay loam, 3 to 7 percent slopes	5.79	7.45	0	47	4e
3561	Hobbs silt loam, occasionally flooded	2.96	3.81	0	82	2w
3874	Hastings-Hobbs complex, 0 to 25 percent slopes	1.86	2.39	0	66	6e
TOTALS		77.71(*)	100%	-	55.23	3.21

(*) Total acres may differ in the second decimal compared to the sum of each acreage soil. This is due to a round error because we only show the acres of each soil with two decimal.

Capability Legend

Increased Limitations and Hazards

Decreased Adaptability and Freedom of Choice Users

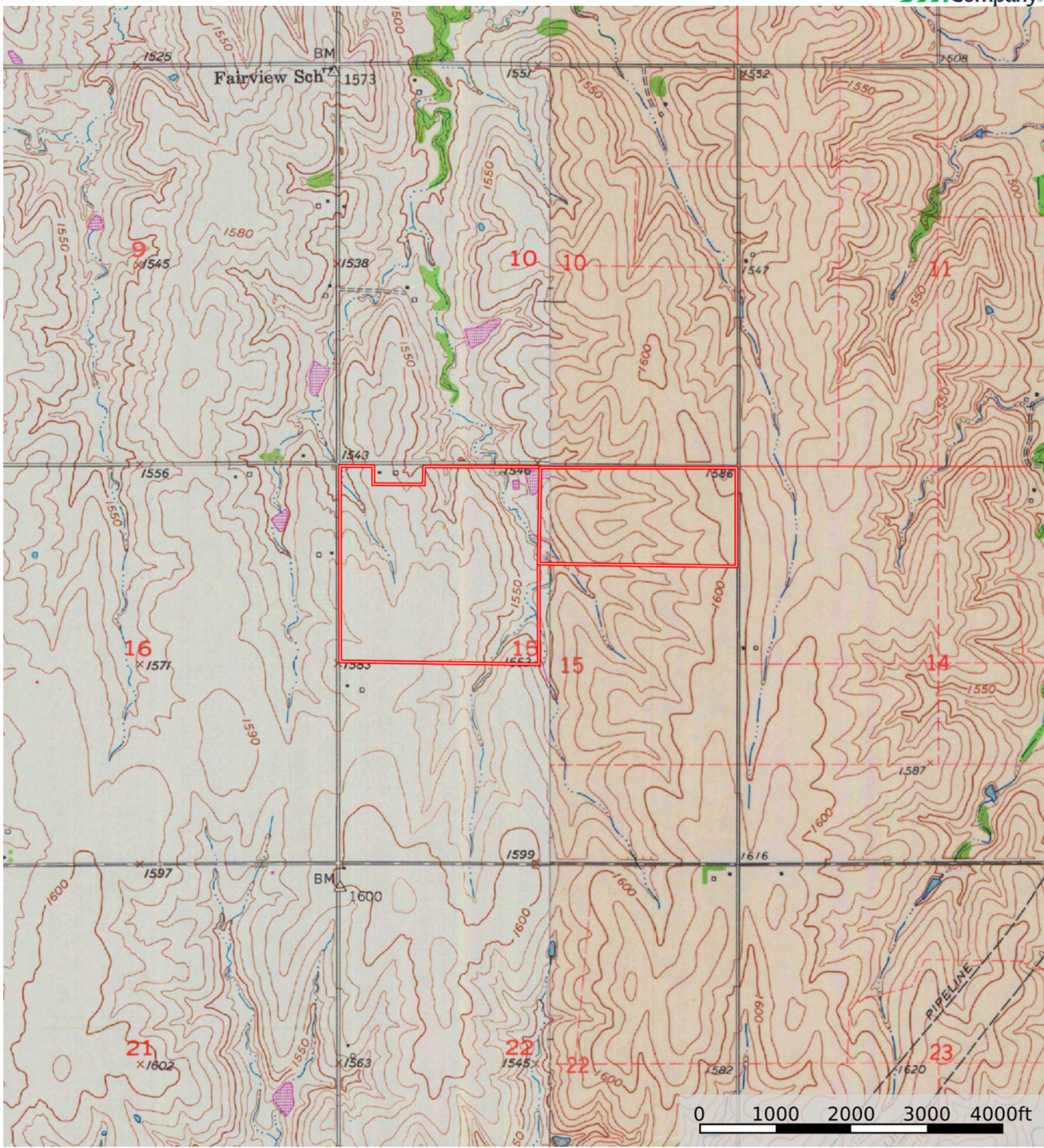
Land, Capability

	1	2	3	4	5	6	7	8
'Wild Life'	•	•	•	•	•	•	•	•
Forestry	•	•	•	•	•	•	•	
Limited	•	•	•	•	•	•	•	
Moderate	•	•	•	•	•	•		
Intense	•	•	•	•	•			
Limited	•	•	•	•				
Moderate	•	•	•					
Intense	•	•						
Very Intense	•							

Grazing Cultivation

(c) climatic limitations (e) susceptibility to erosion

(s) soil limitations within the rooting zone (w) excess of water



 Boundary