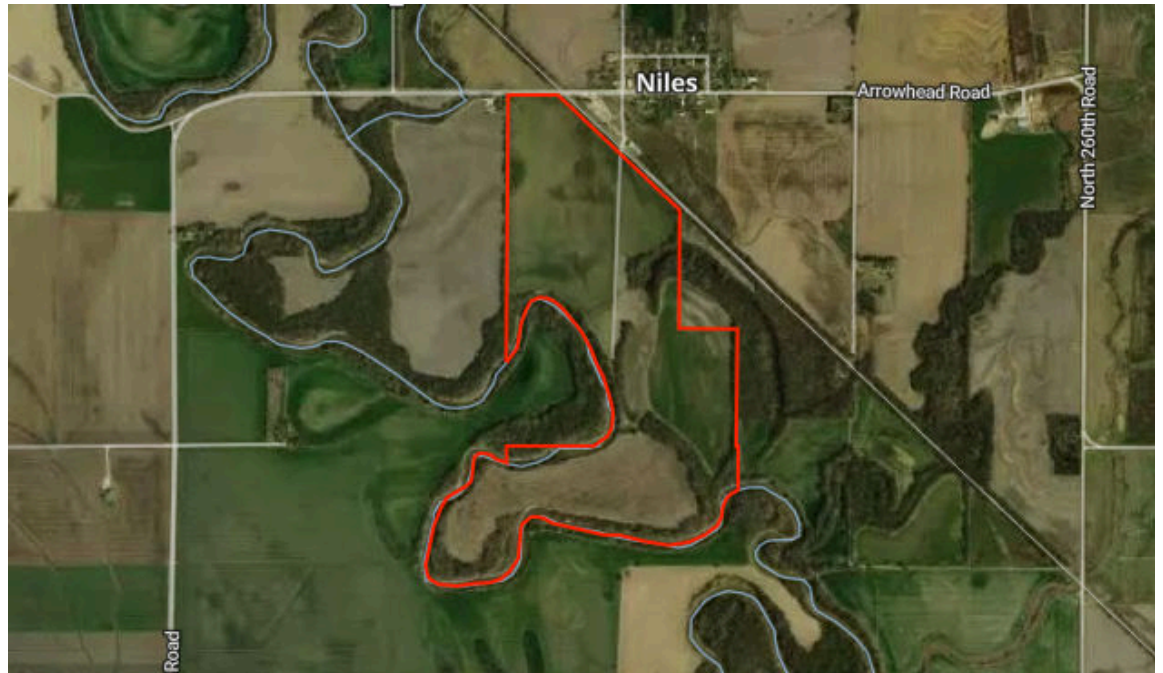




L-2600407

225.7 Acres

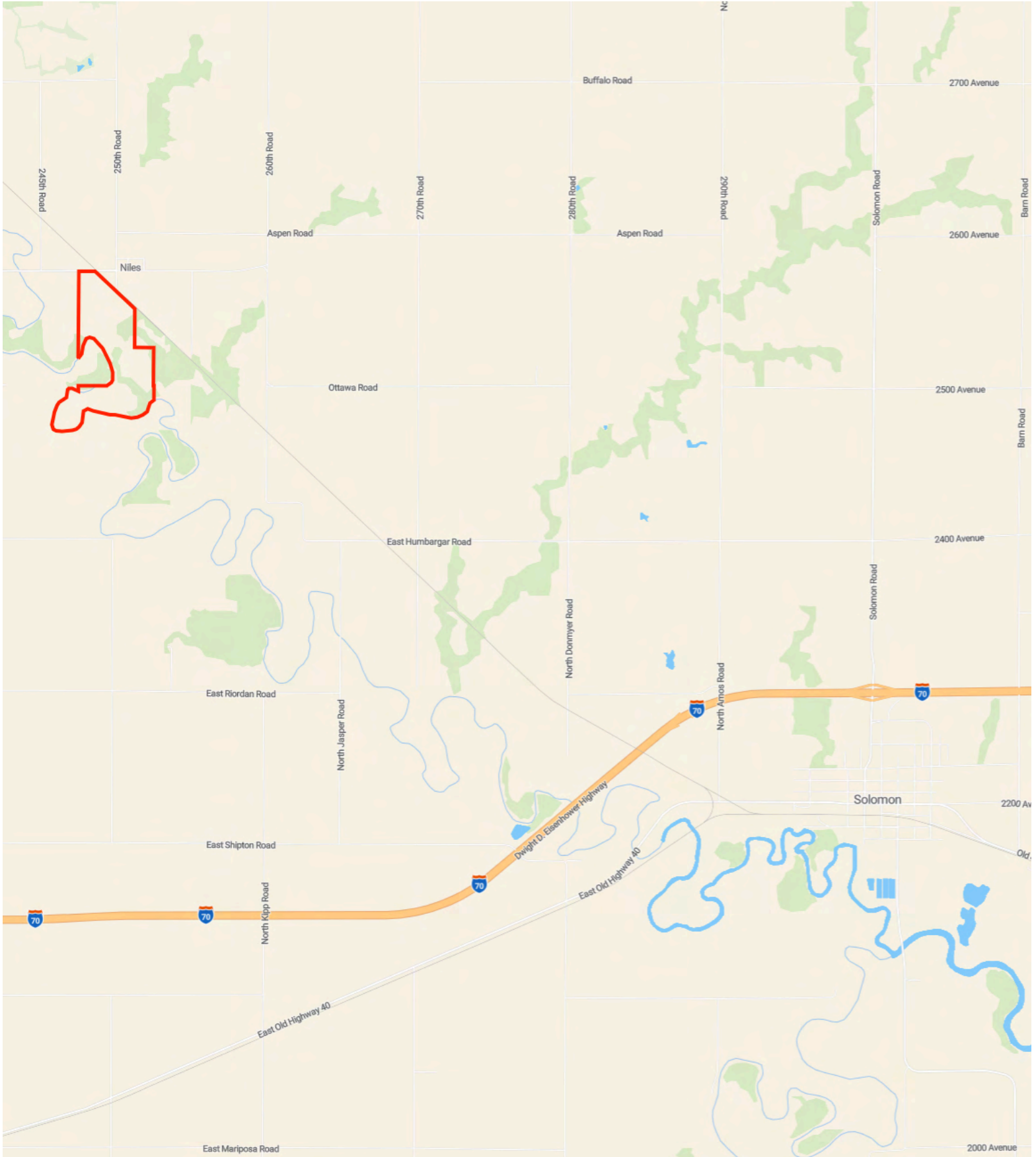


Farmers National Company

Comments

Ottawa & Saline Counties, Kansas

L-2600407



Property Overview



225.7 Acres, 1 Boundary

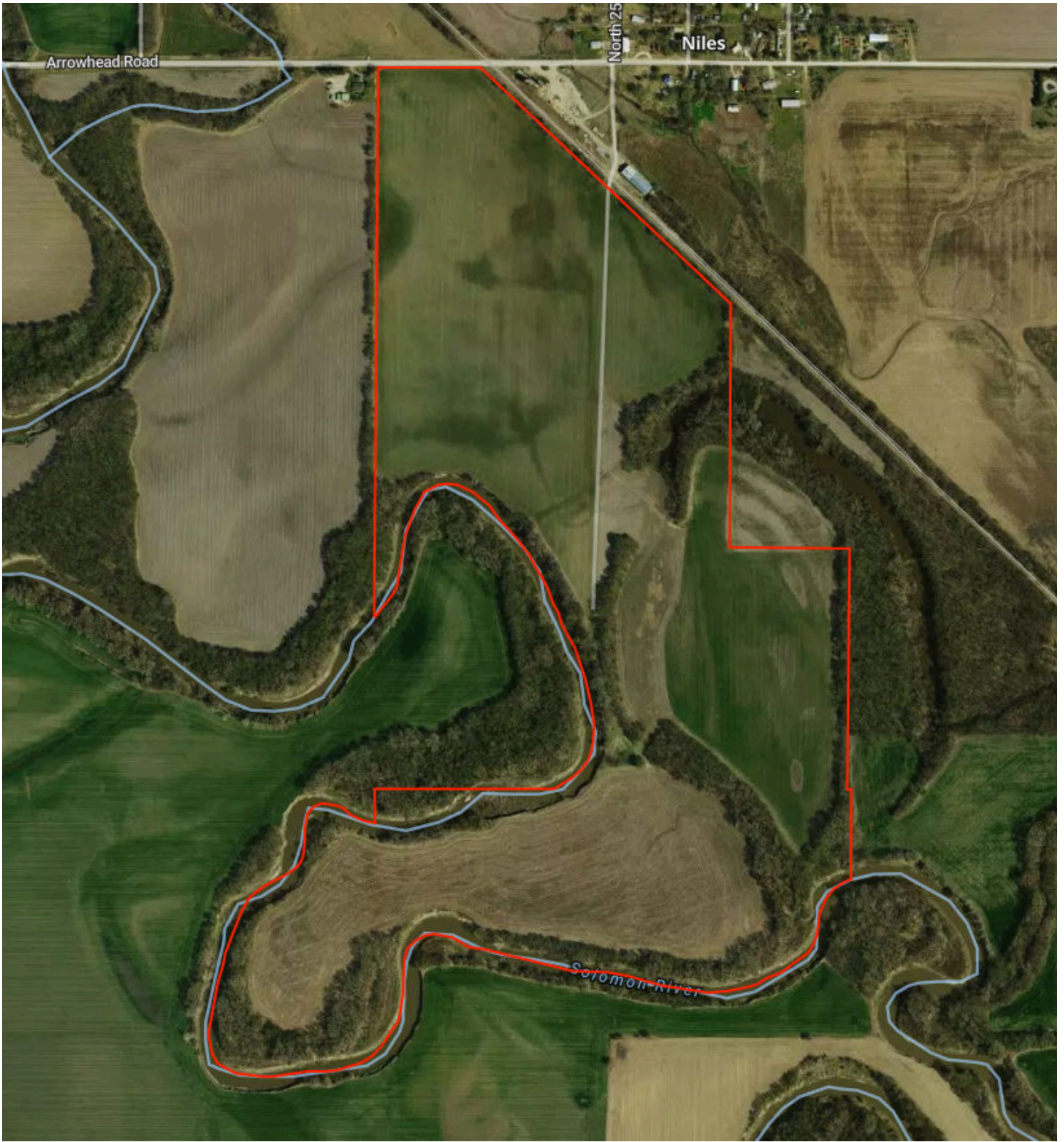


Property Overview



Saline County, KS

225.7 Acres, Boundary 1 of 1



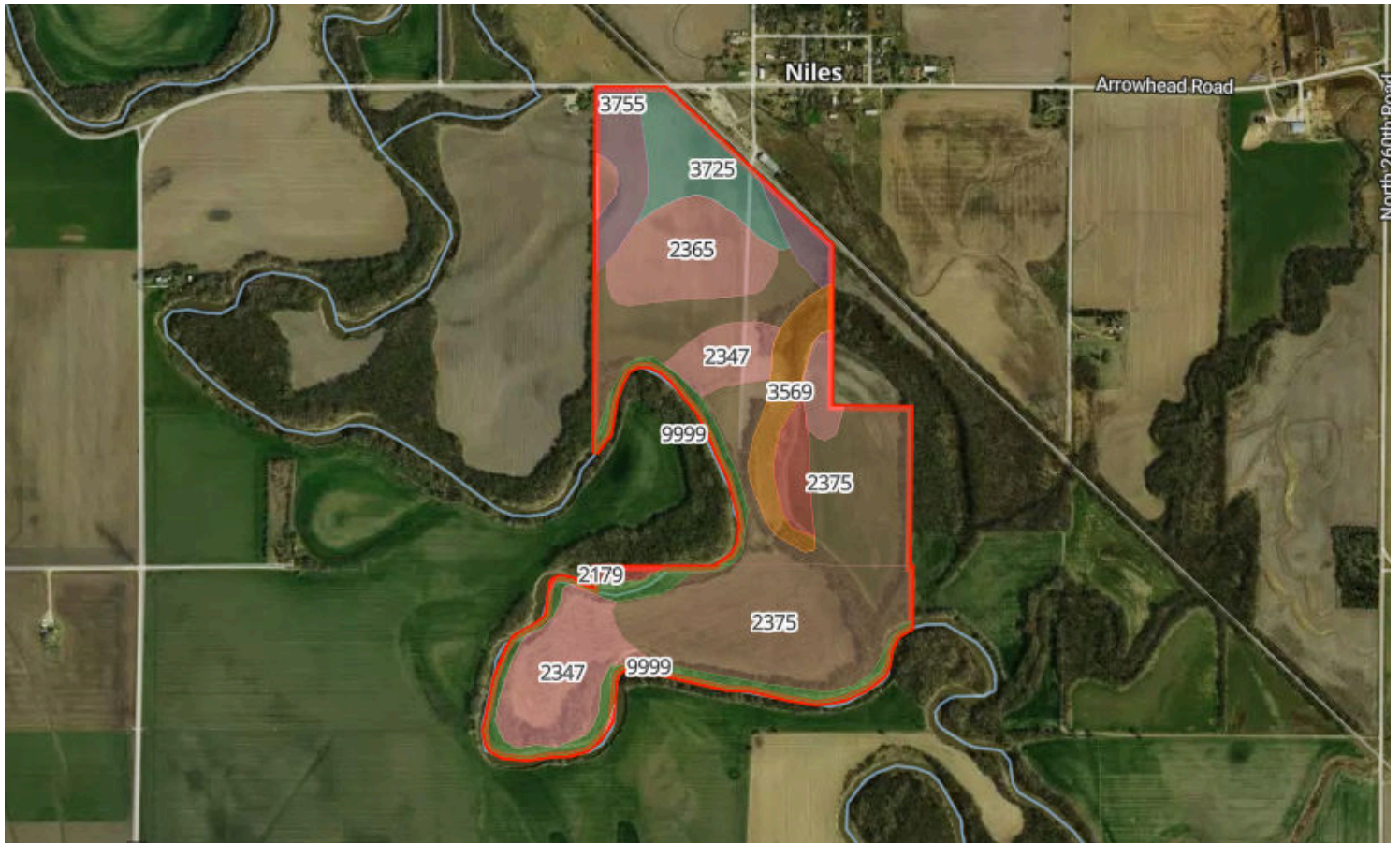
Saline County, KS
Township: 013S

Locations
06 T13S R1W

Acres
225.74

Soils

225.7 Acres, 1 Boundary



	Code	Soil Description	% of Selection	Acres	Non-IRR Class	IRR Class
●	2375	Roxbury silt loam, rarely flooded	22.9%	51.8	2e	1
●	2375	Roxbury silt loam, rarely flooded	20.4%	46	2e	1
●	2365	New Cambria silty clay loam, rarely flooded	10.1%	22.8	2s	2s
●	2347	McCook silt loam, rarely flooded	9.9%	22.5	1	1
●	3725	Detroit silty clay loam, rarely flooded	7.5%	16.9	1	1

Soils

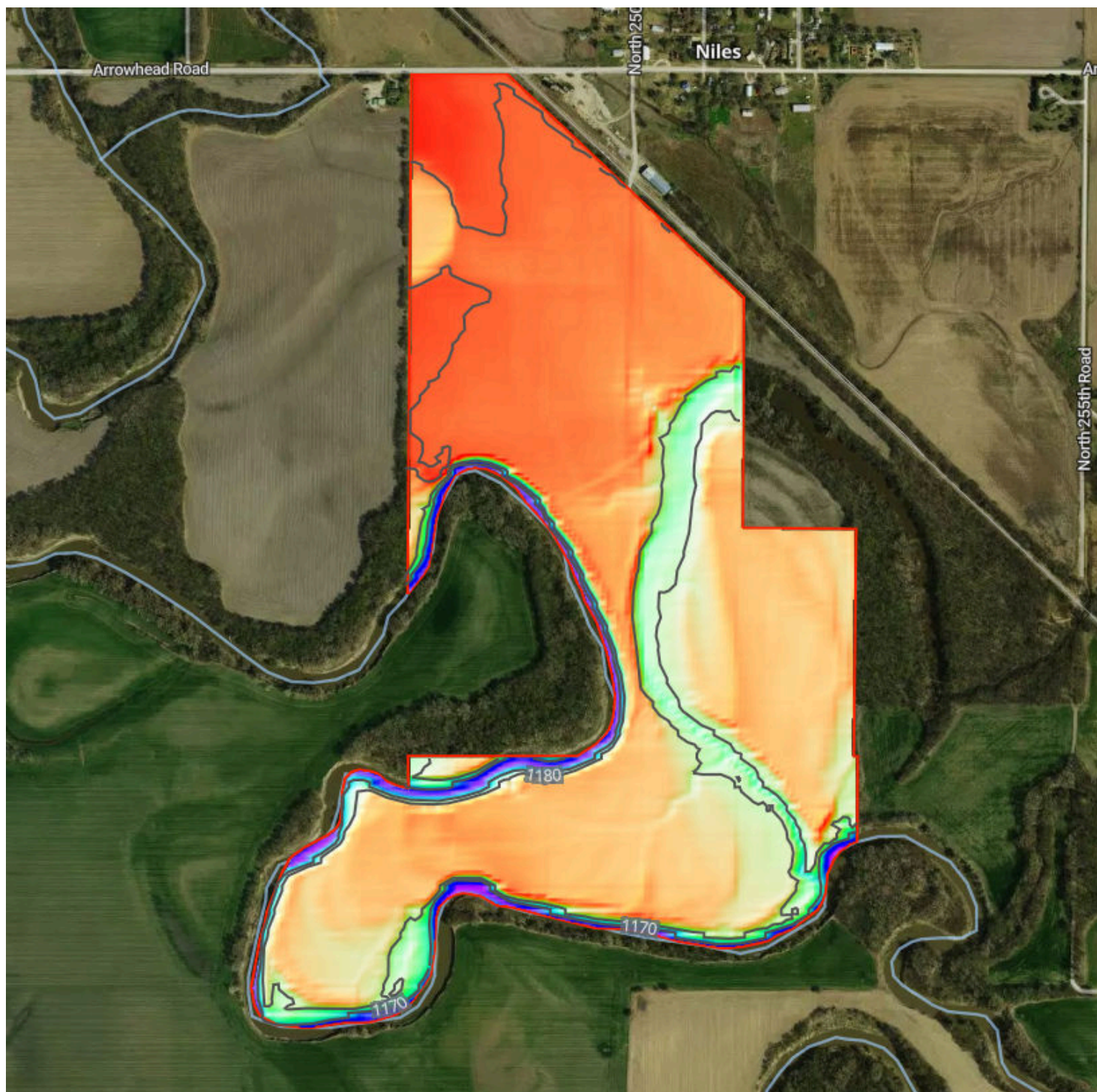


225.7 Acres, 1 Boundary

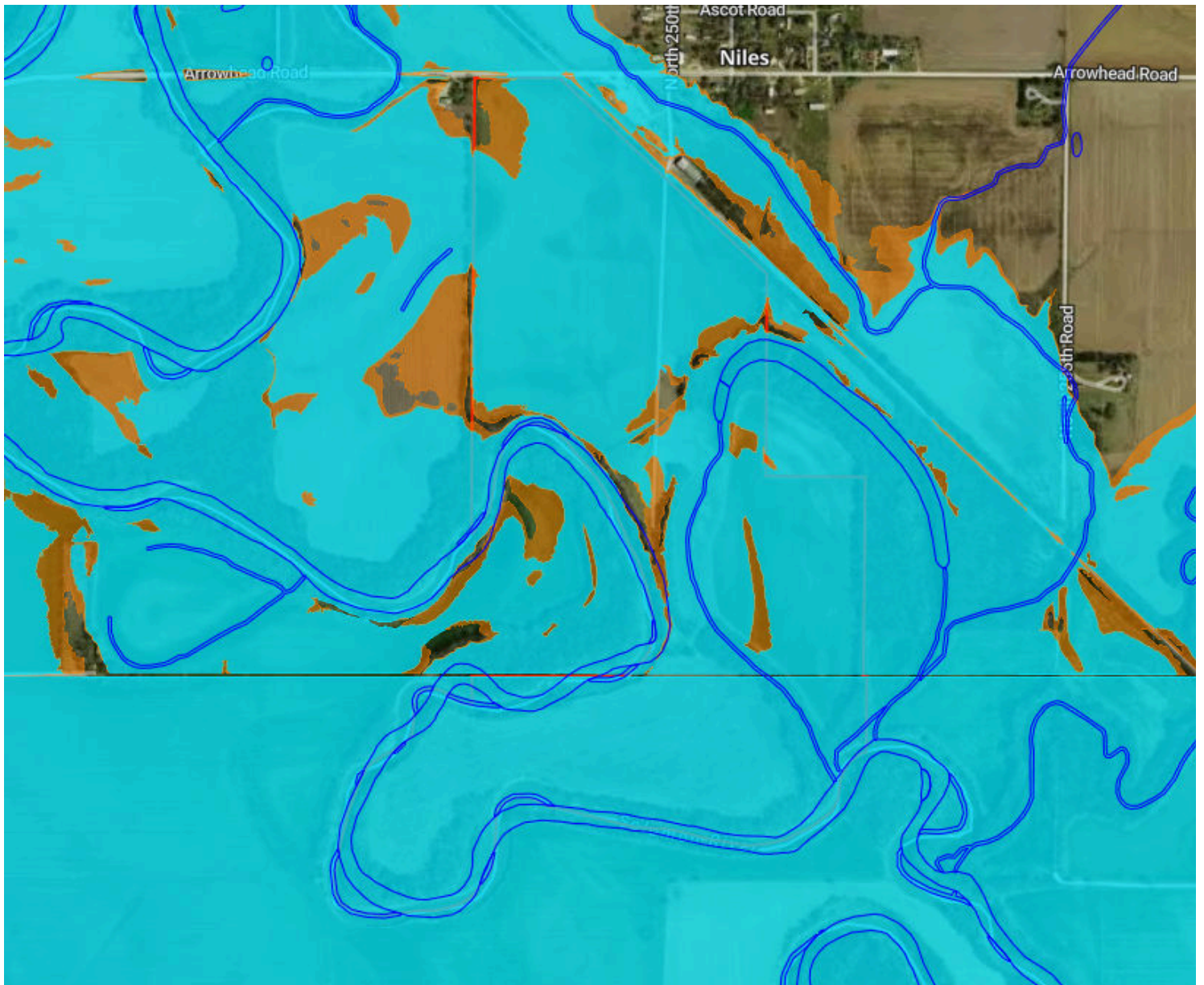
	Code	Soil Description	% of Selection	Acres	Non-IRR Class	IRR Class
●	3755	Hord silt loam, rarely flooded	6.4%	14.4	2c	1
●	9999	Water	6.1%	13.9	--	--
●	2347	McCook silt loam, rarely flooded	5.9%	13.3	1	1
●	3569	Hobbs-Geary silt loams, 0 to 15 percent slopes	5.4%	12.1	5w	--
●	2179	McCook soils, occasionally flooded	2.6%	6	2w	2w
●	9999	Water	2.1%	4.8	--	--
●	2179	McCook soils, occasionally flooded	0.6%	1.3	2w	2w

Elevation









225.7 Acres, 1 Boundary



Source: USGS 3 Meter Dem Interval: 10 feet Range: 32.3 feet Min: 1160.6 feet Max: 1192.9 feet
Slope: 3.3% Min: 0% Max: 52.8%



Flood Zone Hazard

-  0.2% annual flood hazard
-  1% annual flood hazard
-  Future 1% annual flood hazard
-  Increased risk due to levee
-  Reduced risk due to levee
-  Regulatory Floodway
-  Special Floodway
-  Wetlands