

**Legend**

- Non-Cropland
- Cropland
- CRP
- Tract Boundary
- Iowa PLSS
- Iowa Roads

**Wetland Determination Identifiers**

- Restricted Use
- ▽ Limited Restrictions
- Exempt from Conservation
- Compliance Provisions

**Tract Cropland Total: 98.56 acres**

**2023 Program Year**

Map Created April 12, 2023

**Farm 7778**

**Tract 11650**

United States Department of Agriculture (USDA) Farm Service Agency (FSA) maps are for FSA Program administration only. This map does not represent a legal survey or reflect actual ownership; rather it depicts the information provided directly from the producer and/or National Agricultural Imagery Program (NAIP) imagery. The producer accepts the data 'as is' and assumes all risks associated with its use. USDA-FSA assumes no responsibility for actual or consequential damage incurred as a result of any user's reliance on this data outside FSA Programs. Wetland identifiers do not represent the size, shape, or specific determination of the area. Refer to your original determination (CPA-026 and attached maps) for exact boundaries and determinations or contact USDA Natural Resources Conservation Service (NRCS).

USDA is an equal opportunity provider, employer and lender

TRACT #2



Webster County, Iowa



Legend

- Non-Cropland     CRP     Iowa PLSS
- Cropland     Tract Boundary     Iowa Roads

Wetland Determination Identifiers

- Restricted Use
- ▽ Limited Restrictions
- Exempt from Conservation Compliance Provisions

**Tract Cropland Total: 56.54 acres**

2023 Program Year

Map Created April 12, 2023

Farm 6133

Tract 9483

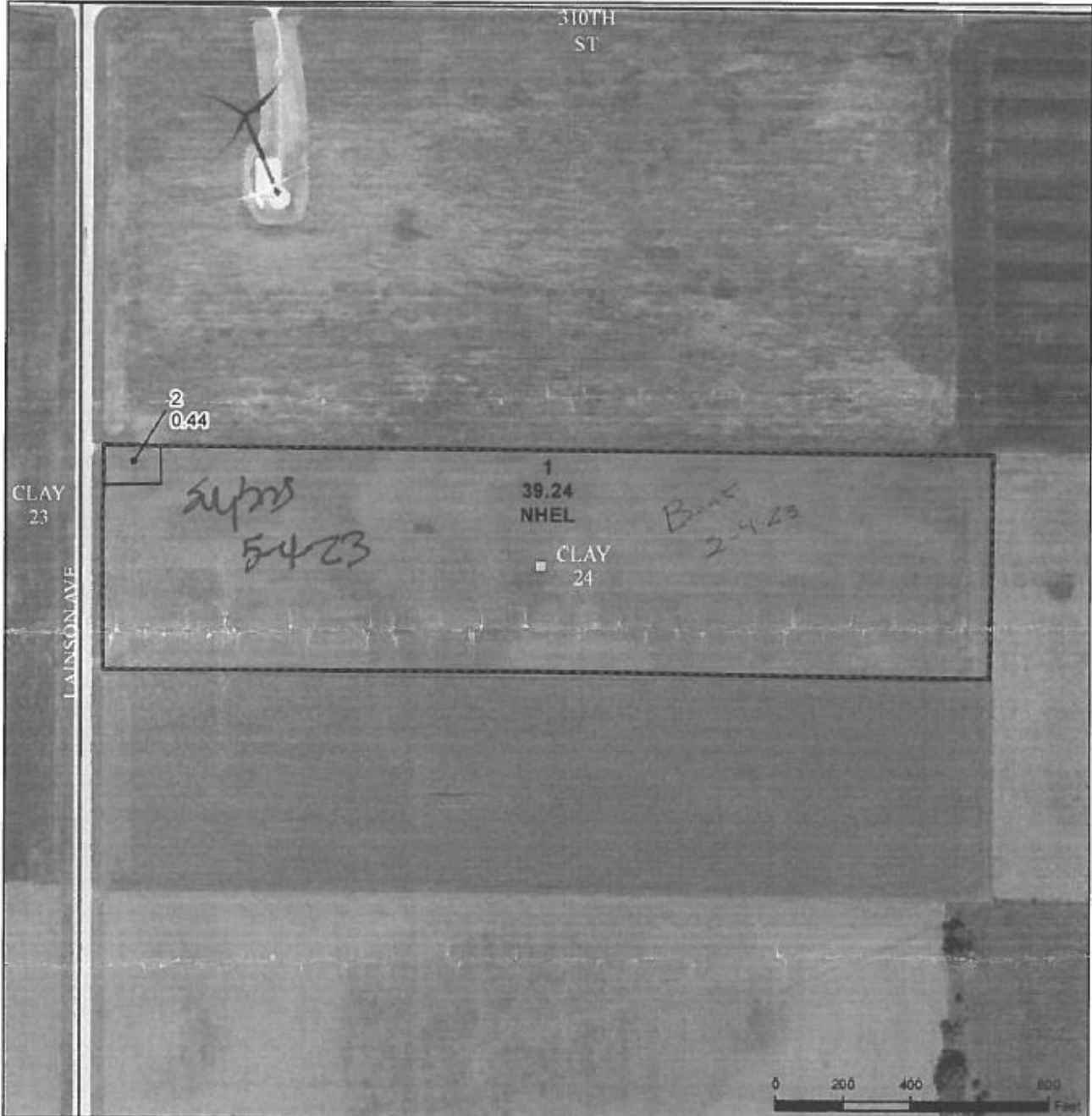
United States Department of Agriculture (USDA) Farm Service Agency (FSA) maps are for FSA Program administration only. This map does not represent a legal survey or reflect actual ownership; rather it depicts the information provided directly from the producer and/or National Agricultural Imagery Program (NAIP) imagery. The producer accepts the data 'as is' and assumes all risks associated with its use. USDA-FSA assumes no responsibility for actual or consequential damage incurred as a result of any user's reliance on this data outside FSA Programs. Wetland identifiers do not represent the size, shape, or specific determination of the area. Refer to your original determination (CPA-026 and attached maps) for exact boundaries and determinations or contact USDA Natural Resources Conservation Service (NRCS).

USDA is an equal opportunity provider, employer, and lender.



United States Department of Agriculture

Webster County, Iowa



Legend

- Non-Cropland
- CRP
- Iowa PLSS
- Cropland
- Tract Boundary
- Iowa Roads

Wetland Determination Identifiers

- Restricted Use
- ▽ Limited Restrictions
- Exempt from Conservation
- Compliance Provisions

**Tract Cropland Total: 39.24 acres**

2023 Program Year

Map Created April 12, 2023

Farm 8622

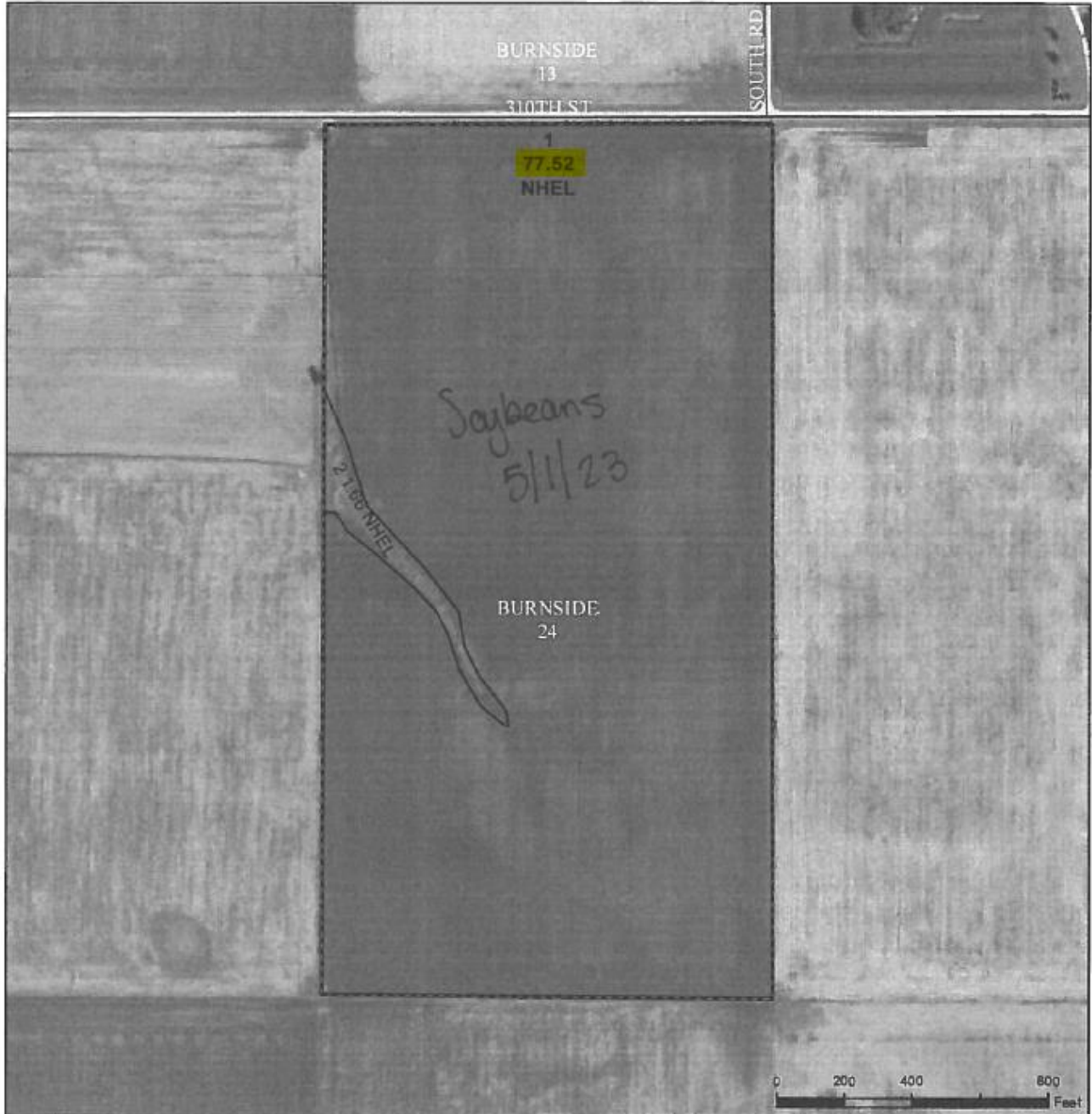
Tract 11036

United States Department of Agriculture (USDA) Farm Service Agency (FSA) maps are for FSA Program administration only. This map does not represent a legal survey or reflect actual ownership; rather it depicts the information provided directly from the producer and/or National Agricultural Imagery Program (NAIP) imagery. The producer accepts the data 'as is' and assumes all risks associated with its use. USDA-FSA assumes no responsibility for actual or consequential damage incurred as a result of any user's reliance on this data outside FSA Programs. Wetland identifiers do not represent the size, shape, or specific determination of the area. Refer to your original determination (CPA-026 and attached maps) for exact boundaries and determinations or contact USDA Natural Resources Conservation Service (NRCS).

USDA is an equal opportunity provider, employer, and lender.



Webster County, Iowa



Legend

- Non-Cropland
- CRP
- Iowa PLSS
- Cropland
- Tract Boundary
- Iowa Roads

Wetland Determination Identifiers

- Restricted Use
- ▽ Limited Restrictions
- Exempt from Conservation
- Compliance Provisions

Tract Cropland Total: 79.18 acres

2023 Program Year

Map Created April 12, 2023

Farm 8521

Tract 3863

United States Department of Agriculture (USDA) Farm Service Agency (FSA) maps are for FSA Program administration only. This map does not represent a legal survey or reflect actual ownership, rather it depicts the information provided directly from the producer and/or National Agricultural Imagery Program (NAIP) imagery. The producer accepts the data 'as is' and assumes all risks associated with its use. USDA-FSA assumes no responsibility for actual or consequential damage incurred as a result of any user's reliance on this data outside FSA Programs. Wetland identifiers do not represent the size, shape, or specific determination of the area. Refer to your original determination (CPA-026 and attached maps) for exact boundaries and determinations or contact USDA Natural Resources Conservation Service (NRCS).

USDA is an equal opportunity provider, employer, and lender.

TRACT #5 & 6



Webster County, Iowa



Legend

- Non-Cropland
- Cropland
- CRP
- Tract Boundary
- Iowa PLSS
- Iowa Roads

Wetland Determination Identifiers

- Restricted Use
- ▽ Limited Restrictions
- Exempt from Conservation
- Compliance Provisions

**Tract Cropland Total: 150.25 acres**

2023 Program Year

Map Created April 12, 2023

Farm 8622

Tract 628

United States Department of Agriculture (USDA) Farm Service Agency (FSA) maps are for FSA Program administration only. This map does not represent a legal survey or reflect actual ownership, rather it depicts the information provided directly from the producer and/or National Agricultural Imagery Program (NAIP) imagery. The producer accepts the data 'as is' and assumes all risks associated with its use. USDA-FSA assumes no responsibility for actual or consequential damage incurred as a result of any user's reliance on this data outside FSA Programs. Wetland identifiers do not represent the size, shape, or specific determination of the area. Refer to your original determination (CPA-026 and attached maps) for exact boundaries and determinations or contact USDA Natural Resources Conservation Service (NRCS).

USDA is an equal opportunity provider, employer, and lender.



United States Department of Agriculture

Webster County, Iowa



Legend

- Non-Cropland
- Cropland
- CRP
- Tract Boundary
- low a PLSS
- low a Roads

Wetland Determination Identifiers

- Restricted Use
- ▽ Limited Restrictions
- Exempt from Conservation
- Compliance Provisions

Tract Cropland Total: 53.80 acres

2023 Program Year

Map Created April 12, 2023

Farm 8420

Tract 1237

United States Department of Agriculture (USDA) Farm Service Agency (FSA) maps are for FSA Program administration only. This map does not represent a legal survey or reflect actual ownership; rather it depicts the information provided directly from the producer and/or National Agricultural Imagery Program (NAIP) imagery. The producer accepts the data 'as is' and assumes all risks associated with its use. USDA-FSA assumes no responsibility for actual or consequential damage incurred as a result of any user's reliance on this data outside FSA Programs. Wetland identifiers do not represent the size, shape, or specific determination of the area. Refer to your original determination (CPA-026 and attached maps) for exact boundaries and determinations or contact USDA Natural Resources Conservation Service (NRCS).

USDA is an equal opportunity provider, employer, and lender.

TRACT #7 (cont.)



United States  
Department of  
Agriculture

Webster County, Iowa



Legend

- Non-Cropland
- Cropland
- CRP
- Tract Boundary
- Iowa PLS
- Iowa Roads

Wetland Determination Identifiers

- Restricted Use
- ▽ Limited Restrictions
- Exempt from Conservation
- Compliance Provisions

**Tract Cropland Total: 34.77 acres**

2023 Program Year

Map Created April 12, 2023

Farm 5532

Tract 10630

United States Department of Agriculture (USDA) Farm Service Agency (FSA) maps are for FSA Program administration only. This map does not represent a legal survey or reflect actual ownership, rather it depicts the information provided directly from the producer and/or National Agricultural Imagery Program (NAIP) imagery. The producer accepts the data 'as is' and assumes all risks associated with its use. USDA-FSA assumes no responsibility for actual or consequential damage incurred as a result of any user's reliance on this data outside FSA Programs. Wetland identifiers do not represent the size, shape, or specific determination of the area. Refer to your original determination (CPA-026 and attached maps) for exact boundaries and determinations or contact USDA Natural Resources Conservation Service (NRCS).

USDA is an equal opportunity provider, employer, and lender.

TRACT #7 (cont.)



Webster County, Iowa



Legend

- Non-Cropland
- CRP
- Iowa PLSS
- Cropland
- Tract Boundary
- Iowa Roads

Wetland Determination Identifiers

- Restricted Use
- ▽ Limited Restrictions
- Exempt from Conservation
- Compliance Provisions

Tract Cropland Total: 24.78 acres

2023 Program Year

Map Created April 12, 2023

Farm 5532

Tract 1238

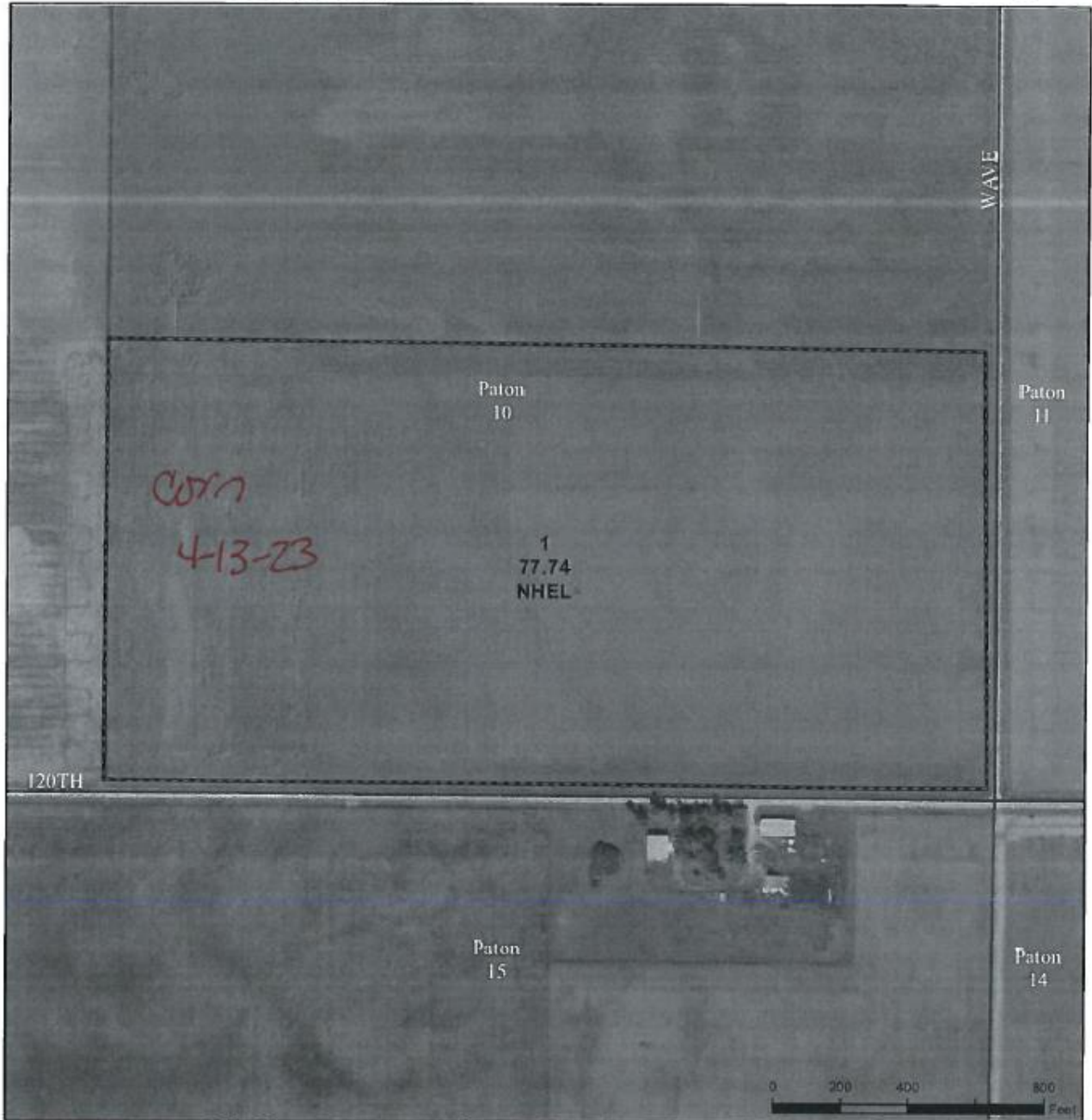
United States Department of Agriculture (USDA) Farm Service Agency (FSA) maps are for FSA Program administration only. This map does not represent a legal survey or reflect actual ownership; rather it depicts the information provided directly from the producer and/or National Agricultural Imagery Program (NAIP) imagery. The producer accepts the data 'as is' and assumes all risks associated with its use. USDA-FSA assumes no responsibility for actual or consequential damage incurred as a result of any user's reliance on this data outside FSA Programs. Wetland identifiers do not represent the size, shape, or specific determination of the area. Refer to your original determination (CPA-026 and attached maps) for exact boundaries and determinations or contact USDA Natural Resources Conservation Service (NRCS).

USDA is an equal opportunity provider, employer, and lender.





Greene County, Iowa



Legend

- Non-Cropland
- Cropland
- CRP
- Tract Boundary
- Iowa PLSS
- Iowa Roads

Wetland Determination Identifiers

- Restricted Use
- ▽ Limited Restrictions
- Exempt from Conservation
- Compliance Provisions

**Tract Cropland Total: 77.74 acres**

2023 Program Year

Map Created April 12, 2023

**Farm 7854**  
**Tract 10505**

United States Department of Agriculture (USDA) Farm Service Agency (FSA) maps are for FSA Program administration only. This map does not represent a legal survey or reflect actual ownership; rather it depicts the information provided directly from the producer and/or National Agricultural Imagery Program (NAIP) imagery. The producer accepts the data 'as is' and assumes all risks associated with its use. USDA-FSA assumes no responsibility for actual or consequential damage incurred as a result of any user's reliance on this data outside FSA Programs. Wetland identifiers do not represent the size, shape, or specific determination of the area. Refer to your original determination (CPA-026 and attached maps) for exact boundaries and determinations or contact USDA Natural Resources Conservation Service (NRCS).

USDA is an equal opportunity provider, employer, and lender.