

PROGRAM YEAR: 2024
 DATE: 04/26/2024
 PAGE: 1

REPORT OF COMMODITIES FARM AND TRACT DETAIL LISTING

Mitchell, Iowa
 FSA - 578 (09-13-16)
 Farm Number: 6892

Operator Name and Address
 3 & B FARMS OF MEYER, IOWA, INC
 2768 490TH ST
 MC INTIRE, IA 50455-8028

Original: MAP
 Revision:
 Cropland: 280.86
 Farmland: 285.20

Tract Number	CLU/Field	Crop/Commodity	Var/Type	Int Use	Act Use	Irr. Pr.	Org Stat	Nat. Sod	C/C Stat	Rpt Unit	Rpt Qty	Det Qty	Crop Land	Field ID	Official/Measured	Planting Date	Planting Period	End Date
841	3	CORN	YEL	GR	GR	N	C	N	I	A	130.69		Yes		N	04/23/2024	01	

Producer B & B FARMS OF MEYER, IOWA, INC Share 100.00 FSA Physical Location Mitchell, Iowa

NAP Unit 3092 Signature Date 04/26/2024

Tract 841 Summary

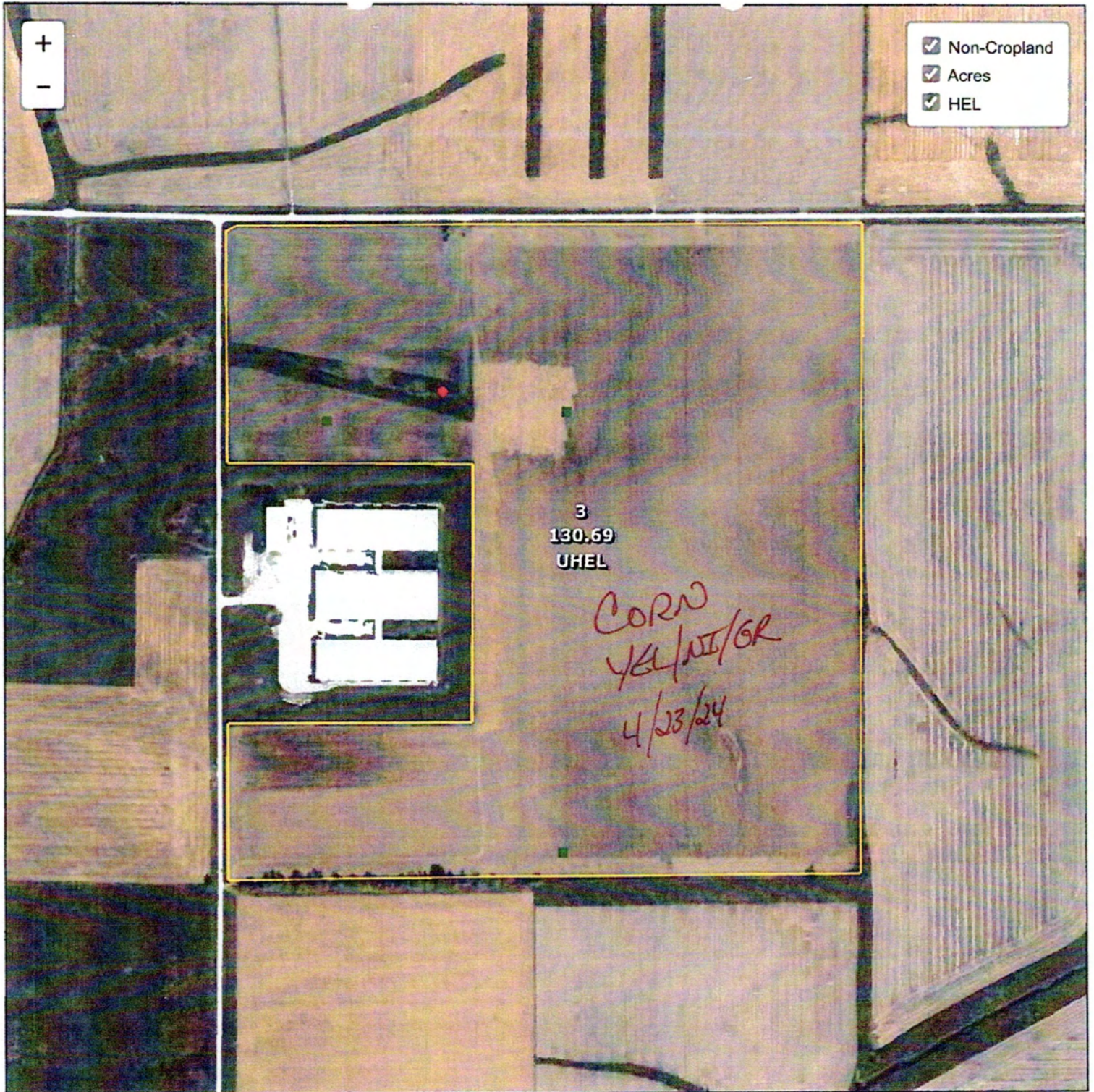
PP Cr/Co	Var/Type	Int Use	Irr.Pr	Rpt Unit	Rpt Qty	PP Cr/Co	Var/Type	Int Use	Irr.Pr	Rpt Unit	Rpt Qty	PP Cr/Co	Var/Type	Int Use	Irr.Pr	Rpt Unit	Rpt Qty	
01	CORN	YEL	GR	N	A	130.69												

Photo Number/Legal Description: NW1/4 S10-99-16 LIBERTY
 Cropland: 130.69

Reported on Cropland: 130.69

Reported on Non-Cropland: 0.00

Difference: 0.00



Common Land Unit

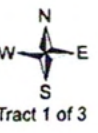
- Cropland
- Non-cropland
- CRP

Farm **6892**
Tract **841**

100% B: B
Wetland Determination Identifiers

- Restricted Use
- ▼ Limited Restrictions
- Exempt from Conservation Compliance Provisions

2024 Crop Year



United States Department of Agriculture (USDA) Farm Service Agency (FSA) maps are for FSA Program administration only. This map does not represent a legal survey or reflect actual ownership, rather it depicts the information provided directly from the producer and/or National Agricultural Imagery Program (NAIP) imagery. The producer accepts the data 'as is' and assumes all risks associated with its use. USDA-FSA assumes no responsibility for actual or consequential damage incurred as a result of any user's reliance on this data outside FSA Programs. Wetland identifiers do not represent the size, shape, or specific determination of the area. Refer to your original determination (CPA-026 and attached maps) for exact boundaries and determinations or contact USDA Natural Resources Conservation Service (NRCS).