

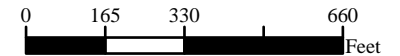
Grant County Minnesota

Farm 6562 Tract 1325

Phy. County: Grant, MN

2026 Program Year

2023 NAIP Imagery
Map Created 03/25/2026



Unless Otherwise Noted:
 All fields are non-irrigated
 Shares are 100% to operator
 Corn = Yellow for Grain
 Soybeans = Common for Grain
 Wheat = HRS, HRW = Grain
 Sunflowers = Oil, Non-Oil = Grain
 Oats & Barley = Spring for Grain
 Canola = Spring for Seed
 Alfalfa = For Forage
 Mix Forage AGM, GMA, IGS = for Forage
 Rye = for Grain
 Peas = Process
 Beans = Dry Edible
 Native Annual Grass = for Grazing



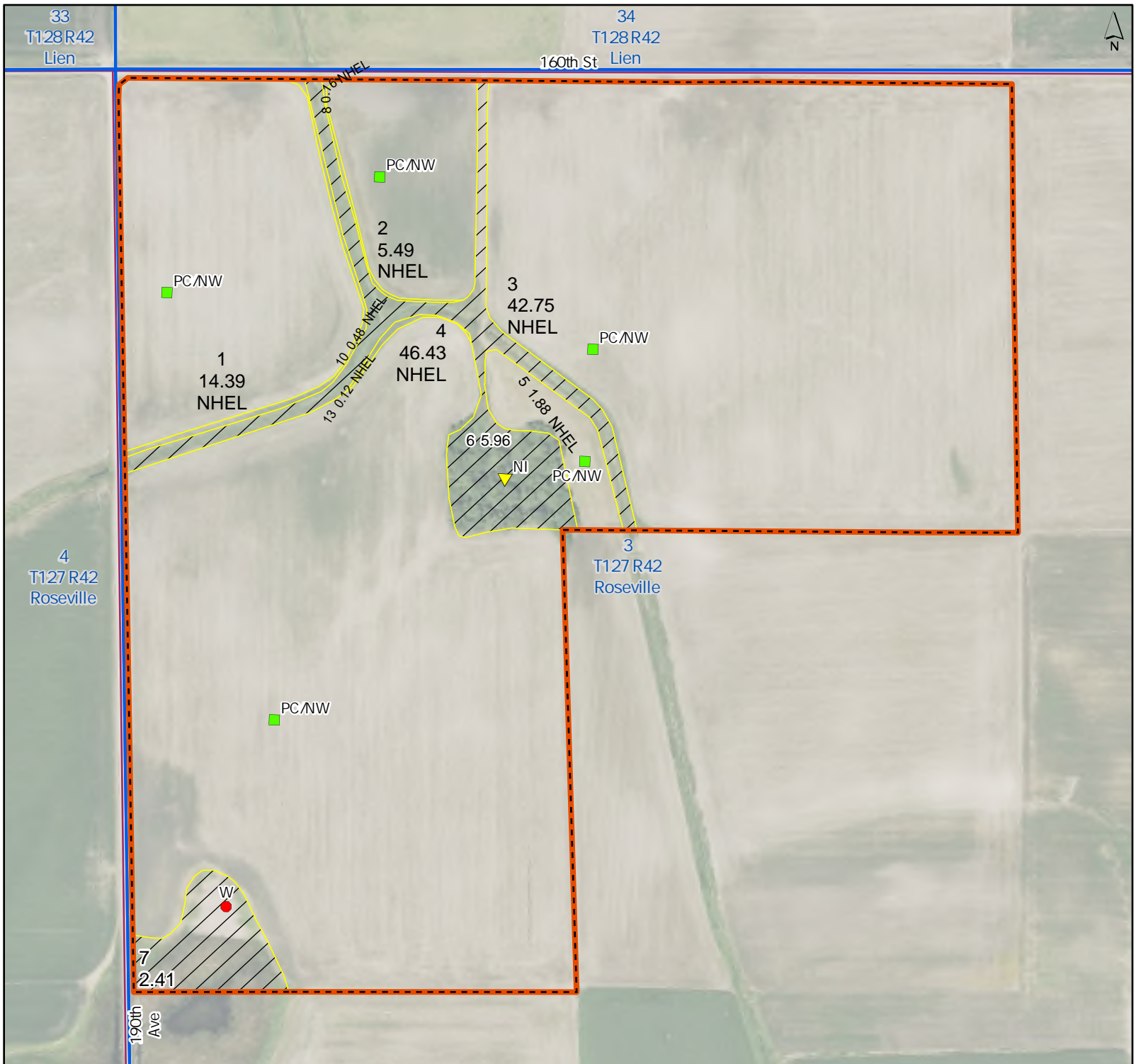
- Tract Boundary
- Noncropland
- Cropland
- PLSS

Wetland Determination Identifiers

- Restricted Use
- Limited Restrictions
- Exempt from Conservation Compliance Provisions

Tract Cropland Total: 39.00 acres





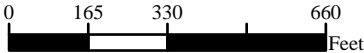
**Grant County
Minnesota**

**Farm 6562
Tract 1485**

Phy. County: Grant, MN

2026 Program Year

2023 NAIP Imagery
Map Created 03/25/2026



- Unless Otherwise Noted:
 All fields are non-irrigated
 Shares are 100% to operator
 Corn = Yellow for Grain
 Soybeans = Common for Grain
 Wheat = HRS, HRW = Grain
 Sunflowers = Oil, Non-Oil = Grain
 Oats & Barley = Spring for Grain
 Canola = Spring for Seed
 Alfalfa = For Forage
 Mix Forage AGM, GMA, IGS = for Forage
 Rye = for Grain
 Peas = Process
 Beans = Dry Edible
 Native Annual Grass = for Grazing

- Tract Boundary
- Noncropland
- Cropland
- PLSS

- Wetland Determination Identifiers**
- Restricted Use
 - Limited Restrictions
 - Exempt from Conservation Compliance Provisions

Tract Cropland Total: 111.70 acres

United States Department of Agriculture (USDA) Farm Service Agency (FSA) maps are for FSA Program administration only. This map does not represent a legal survey or reflect actual ownership; rather it depicts the information provided directly from the producer and/or National Agricultural Imagery Program (NAIP) imagery. The producer accepts the data 'as is' and assumes all risks associated with its use. USDA-FSA assumes no responsibility for actual or consequential damage incurred as a result of any user's reliance on this data outside FSA Programs. Wetland identifiers do not represent the size, shape, or specific determination of the area. Refer to your original determination (CPA-026 and attached maps) for exact boundaries and determinations or contact USDA NRCS. USDA is an equal opportunity provider, employer, and lender.



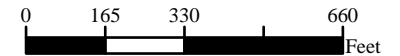
Grant County Minnesota

Farm 6562 Tract 12079

Phy. County: Grant, MN

2026 Program Year

2023 NAIP Imagery
Map Created 03/25/2026



Unless Otherwise Noted:
All fields are non-irrigated
Shares are 100% to operator
Corn = Yellow for Grain
Soybeans = Common for Grain
Wheat = HRS, HRW = Grain
Sunflowers = Oil, Non-Oil = Grain
Oats & Barley = Spring for Grain
Canola = Spring for Seed
Alfalfa = For Forage
Mix Forage AGM, GMA, IGS = for Forage
Rye = for Grain
Peas = Process
Beans = Dry Edible
Native Annual Grass = for Grazing

- Tract Boundary
- Cropland
- PLSS

Wetland Determination Identifiers

- Restricted Use
- Limited Restrictions
- Exempt from Conservation Compliance Provisions

Tract Cropland Total: 58.92 acres



United States Department of Agriculture (USDA) Farm Service Agency (FSA) maps are for FSA Program administration only. This map does not represent a legal survey or reflect actual ownership; rather it depicts the information provided directly from the producer and/or National Agricultural Imagery Program (NAIP) imagery. The producer accepts the data 'as is' and assumes all risks associated with its use. USDA-FSA assumes no responsibility for actual or consequential damage incurred as a result of any user's reliance on this data outside FSA Programs. Wetland identifiers do not represent the size, shape, or specific determination of the area. Refer to your original determination (CPA-026 and attached maps) for exact boundaries and determinations or contact USDA NRCS. USDA is an equal opportunity provider, employer, and lender.

