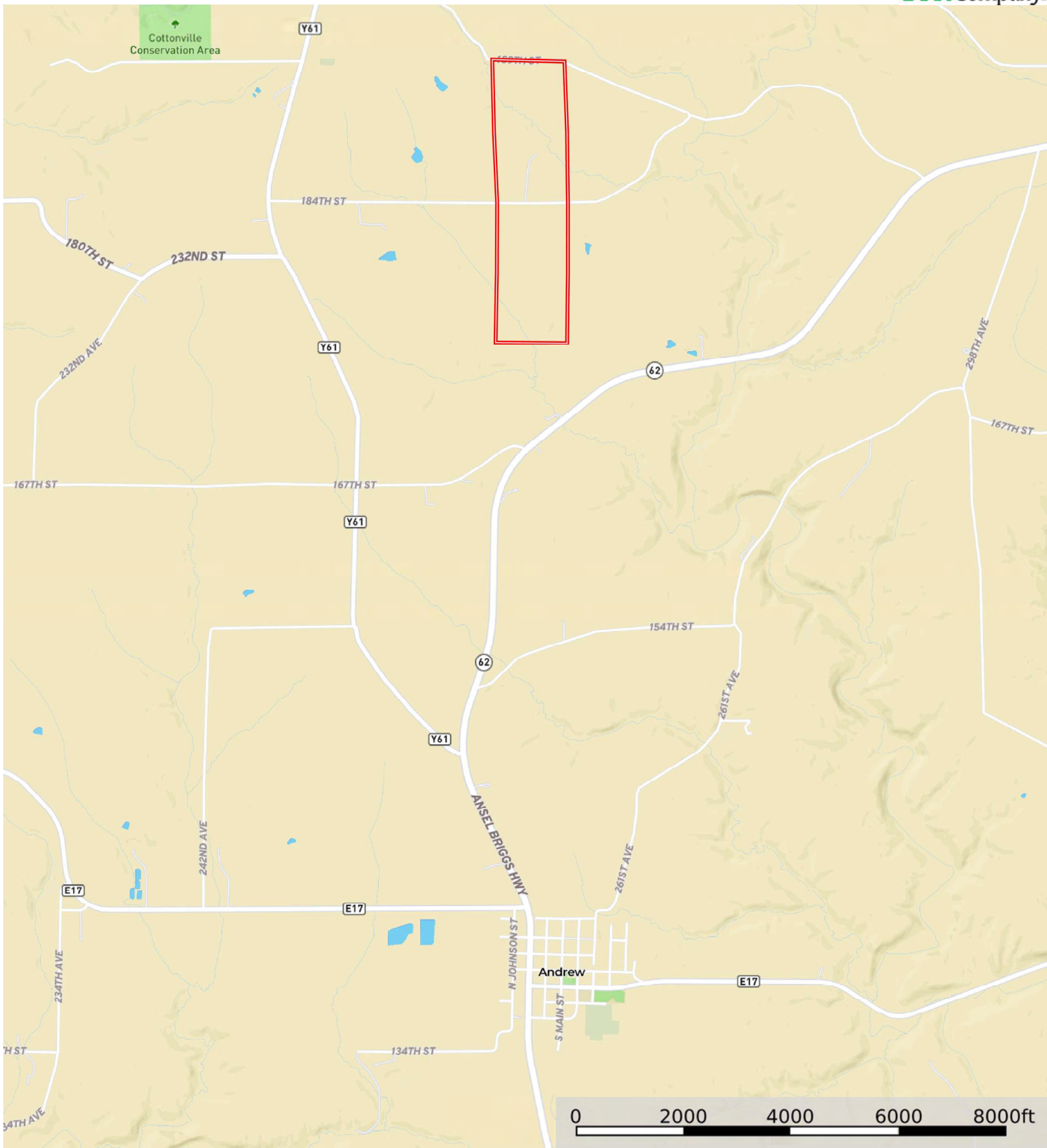


L-2500029

Jackson County, Iowa, 160 AC +/-



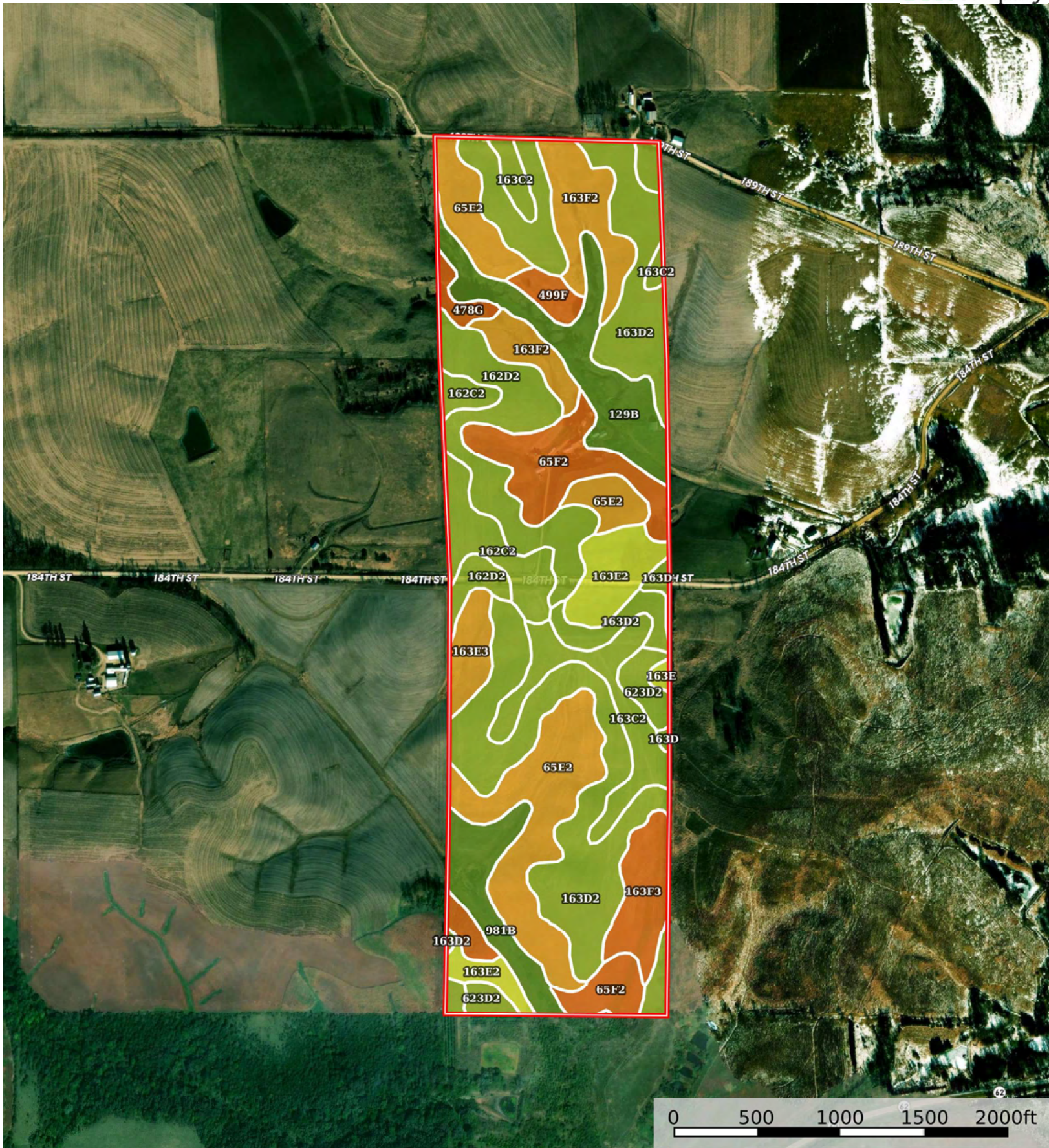
Boundary





Boundary





Boundary



| Boundary 161.9 ac

SOIL CODE	SOIL DESCRIPTION	ACRES	%	CSR2	CPI	NCCPI	CAP
163D2	Fayette silt loam, 9 to 14 percent slopes, moderately eroded	40.81	25.21	46.0	0	81	3e
65E2	Lindley silt loam, 14 to 18 percent slopes, moderately eroded	21.95	13.56	27.0	0	64	6e
162D2	Downs silt loam, 9 to 14 percent slopes, moderately eroded	14.35	8.86	54.0	0	81	3e
65F2	Lindley silt loam, 18 to 25 percent slopes, moderately eroded	12.14	7.5	10.0	0	51	7e
129B	Arenzville-Chaseburg complex, 1 to 5 percent slopes	11.77	7.27	73.0	92	85	2w
163C2	Fayette silt loam, 5 to 9 percent slopes, moderately eroded	11.02	6.81	72.0	0	84	3e
163F2	Fayette silt loam, 18 to 25 percent slopes, moderately eroded	10.35	6.39	18.0	0	61	6e
163E2	Fayette silt loam, 14 to 18 percent slopes, moderately eroded	7.2	4.45	35.0	0	77	4e
162C2	Downs silt loam, 5 to 9 percent slopes, moderately eroded	7.2	4.45	80.0	0	85	3e
981B	Worthen silt loam, 2 to 5 percent slopes	6.83	4.22	94.0	0	89	2e
163F3	Fayette silty clay loam, 18 to 25 percent slopes, severely eroded	5.7	3.52	12.0	0	58	7e
163E3	Fayette silty clay loam, 14 to 18 percent slopes, severely eroded	3.37	2.08	29.0	0	72	6e
623D2	Rozetta silt loam, 9 to 14 percent slopes, moderately eroded	3.18	1.96	50.0	0	78	3e
478G	Nordness-Rock outcrop complex, 18 to 60 percent slopes	2.8	1.73	5.0	0	6	7s
499F	Nordness silt loam, 14 to 35 percent slopes	1.95	1.2	5.0	0	12	7s
163D	Fayette silt loam, 9 to 14 percent slopes	0.86	0.53	49.0	0	85	3e
163E	Fayette silt loam, 14 to 18 percent slopes	0.42	0.26	38.0	0	81	4e
TOTALS		161.9(*)	100%	43.74	6.69	72.83	4.15









(\*) Total acres may differ in the second decimal compared to the sum of each acreage soil. This is due to a round error because we only show the acres of each soil with two decimal.

## Capability Legend

Increased Limitations and Hazards

Decreased Adaptability and Freedom of Choice Users

Land, Capability

								
	1	2	3	4	5	6	7	8
'Wild Life'	•	•	•	•	•	•	•	•
Forestry	•	•	•	•	•	•	•	
Limited	•	•	•	•	•	•	•	
Moderate	•	•	•	•	•	•		
Intense	•	•	•	•	•			
Limited	•	•	•	•				
Moderate	•	•	•					
Intense	•	•						
Very Intense	•							

### Grazing Cultivation

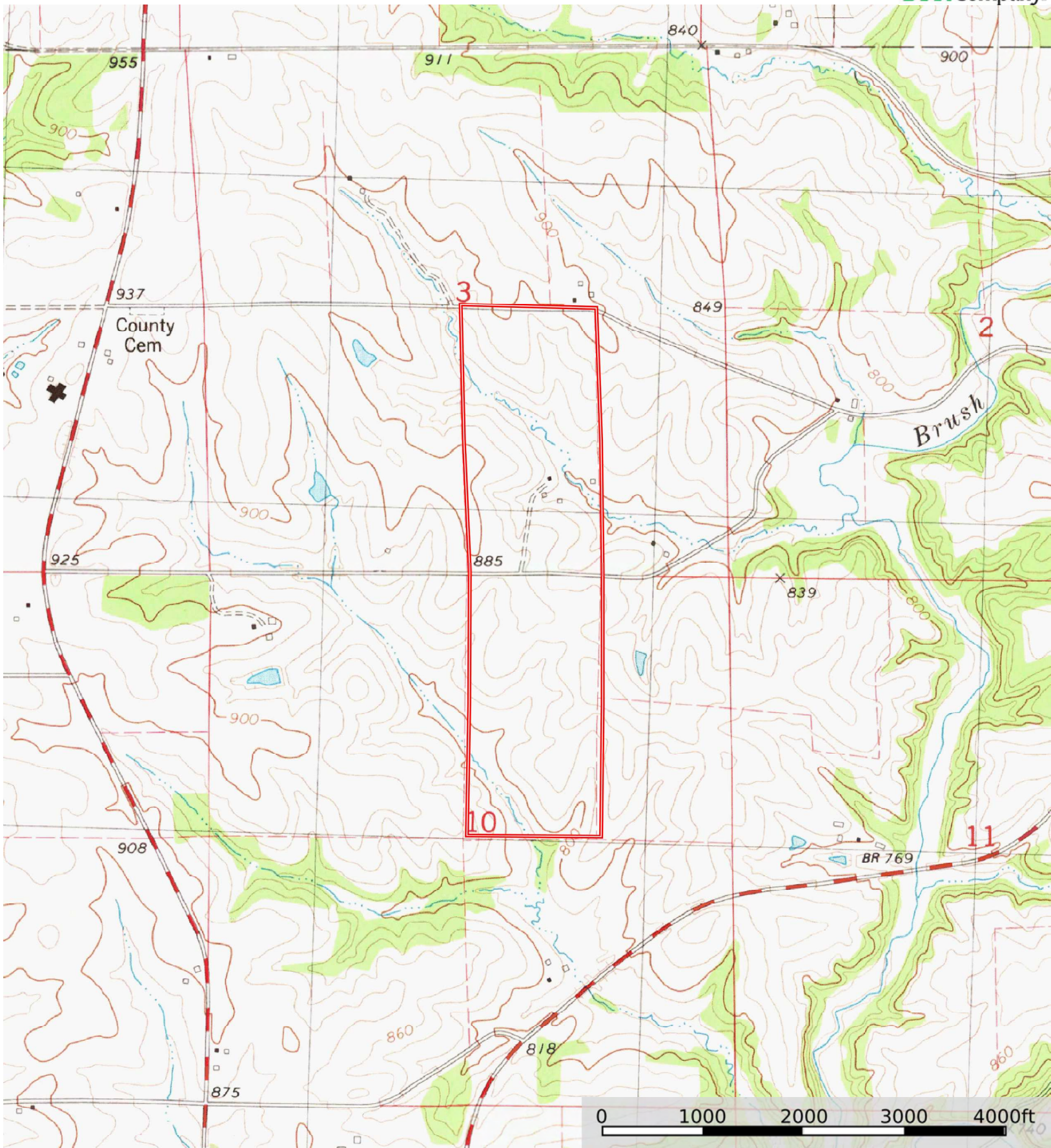
(c) climatic limitations (e) susceptibility to erosion

(s) soil limitations within the rooting zone (w) excess of water



L-2500029

Jackson County, Iowa, 160 AC +/-



Boundary