


Feldt

Mitchell County, Iowa, 82 AC +/-




 Boundary



 Boundary

Feldt
Mitchell County, Iowa, 82 AC +/-



 Boundary

|  Boundary 73.8 ac

SOIL CODE	SOIL DESCRIPTION	ACRES	%	CSR2	CPI	NCCPI	CAP
813B	Atkinson loam, till plain, 2 to 5 percent slopes	21.98	29.78	60.0	0	64	2e
377	Dinsdale silty clay loam, 0 to 2 percent slopes	21.38	28.97	99.0	0	87	1
214B	Rockton loam, 20 to 30 inches to limestone, till plain, 2 to 5 percent slopes	8.18	11.08	47.0	0	52	2e
214C	Rockton loam, 20 to 30 inches to limestone, till plain, 5 to 9 percent slopes	7.7	10.43	40.0	0	51	3e
412E	Emeline loam, 9 to 18 percent slopes	6.08	8.24	5.0	0	24	6s
394	Ostrander loam, 0 to 2 percent slopes	3.96	5.37	94.0	100	80	1
96	Turlin silt loam, 0 to 2 percent slopes	3.52	4.77	90.0	0	91	2w
27B	Terril loam, 2 to 5 percent slopes	0.82	1.11	90.0	0	93	2e
813	Atkinson loam, till plain, 0 to 2 percent slopes	0.15	0.2	66.0	0	65	1
804	Ashdale silt loam, 0 to 2 percent slopes	0.03	0.04	80.0	0	88	1
TOTALS		73.8(*)	100%	66.85	5.37	67.16	2.09









(*) Total acres may differ in the second decimal compared to the sum of each acreage soil. This is due to a round error because we only show the acres of each soil with two decimal.

Capability Legend

Increased Limitations and Hazards

Decreased Adaptability and Freedom of Choice Users

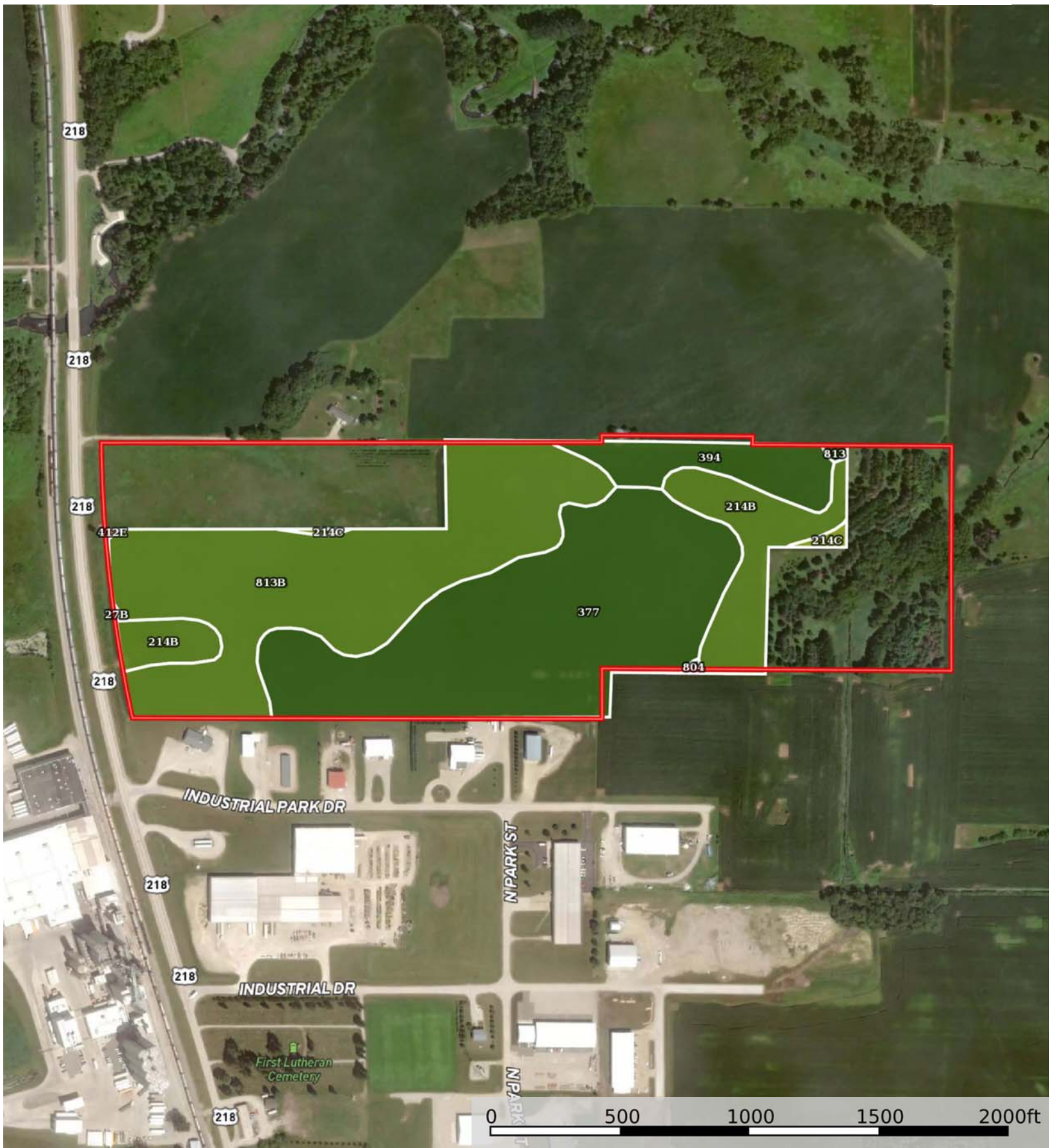
Land, Capability


								
	1	2	3	4	5	6	7	8
'Wild Life'	•	•	•	•	•	•	•	•
Forestry	•	•	•	•	•	•	•	
Limited	•	•	•	•	•	•	•	
Moderate	•	•	•	•	•	•		
Intense	•	•	•	•	•			
Limited	•	•	•	•				
Moderate	•	•	•					
Intense	•	•						
Very Intense	•							


Grazing Cultivation

(c) climatic limitations (e) susceptibility to erosion

(s) soil limitations within the rooting zone (w) excess of water



 Boundary

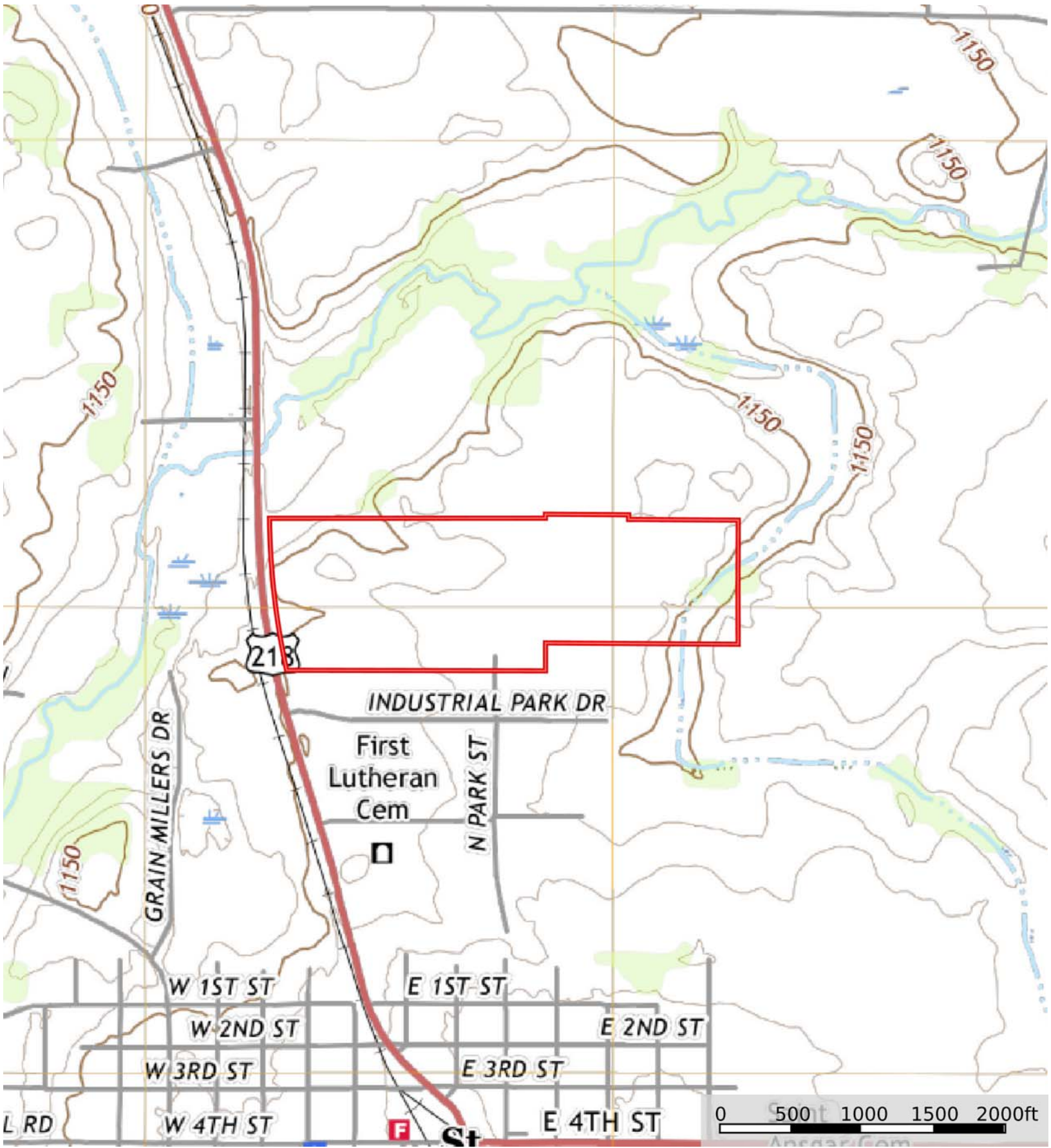
|  Boundary 52.2 ac

SOIL CODE	SOIL DESCRIPTION	ACRES	%	CSR2	CPI	NCCPI	CAP
377	Dinsdale silty clay loam, 0 to 2 percent slopes	21.51	41.19	99.0	0	87	1
813B	Atkinson loam, till plain, 2 to 5 percent slopes	20.03	38.36	60.0	0	64	2e
214B	Rockton loam, 20 to 30 inches to limestone, till plain, 2 to 5 percent slopes	6.45	12.35	47.0	0	52	2e
394	Ostrander loam, 0 to 2 percent slopes	3.69	7.07	94.0	100	80	1
214C	Rockton loam, 20 to 30 inches to limestone, till plain, 5 to 9 percent slopes	0.32	0.61	40.0	0	51	3e
813	Atkinson loam, till plain, 0 to 2 percent slopes	0.11	0.21	66.0	0	65	1
804	Ashdale silt loam, 0 to 2 percent slopes	0.06	0.11	80.0	0	88	1
412E	Emeline loam, 9 to 18 percent slopes	0.02	0.04	5.0	0	24	6s
27B	Terril loam, 2 to 5 percent slopes	0.01	0.02	90.0	0	93	2e
TOTALS		52.22(*)	100%	76.74	7.07	73.04	1.52

(*) Total acres may differ in the second decimal compared to the sum of each acreage soil. This is due to a round error because we only show the acres of each soil with two decimal.



Feldt
Mitchell County, Iowa, 82 AC +/-



 Boundary