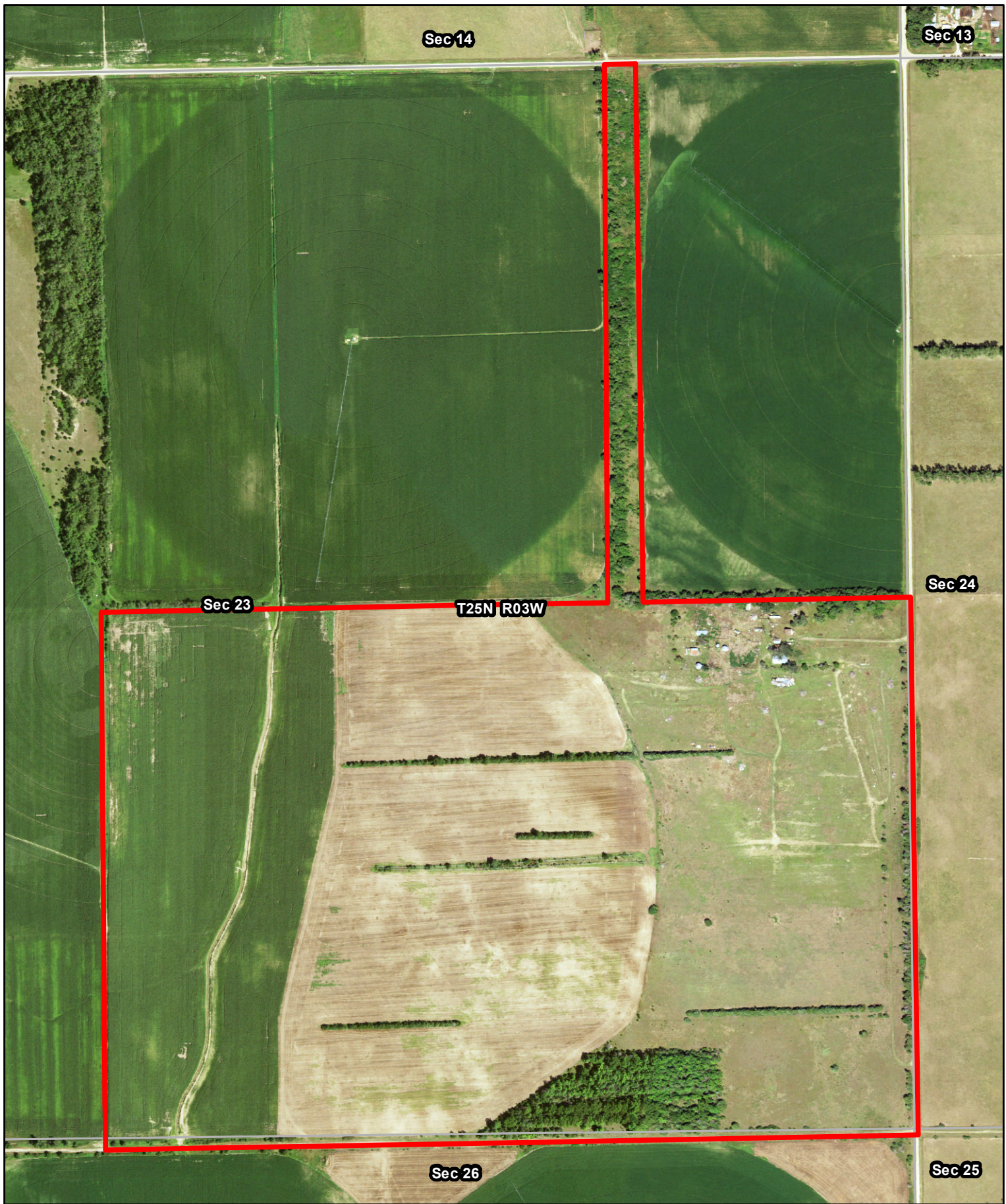


**L-1800727**  
**Gilbert Fuchs Estate**  
**Pierce County, Nebraska**

Latitude: 42.1608°N  
Longitude: -97.5827°W  
Imagery Source: USDA NAIP  
Soil Data Source: USDA NRCS  
Boundaries Are Approximate

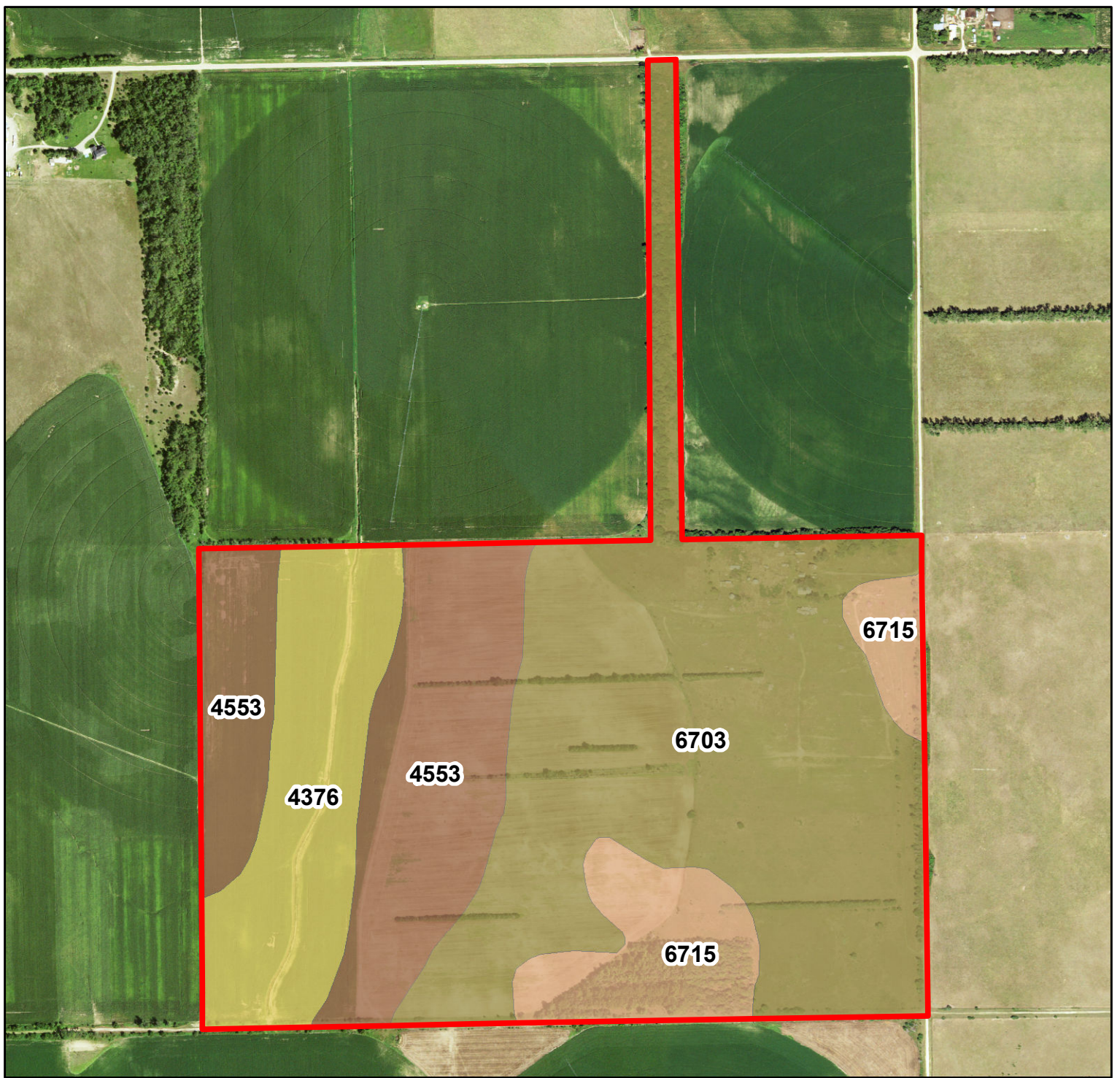




**L-1800727**  
**Gilbert Fuchs Estate**  
**Pierce County, Nebraska**

Latitude: 42.1266°N  
Longitude: -97.6283°W  
Imagery Source: USDA NAIP  
Soil Data Source: USDA NRCS  
Boundaries Are Approximate





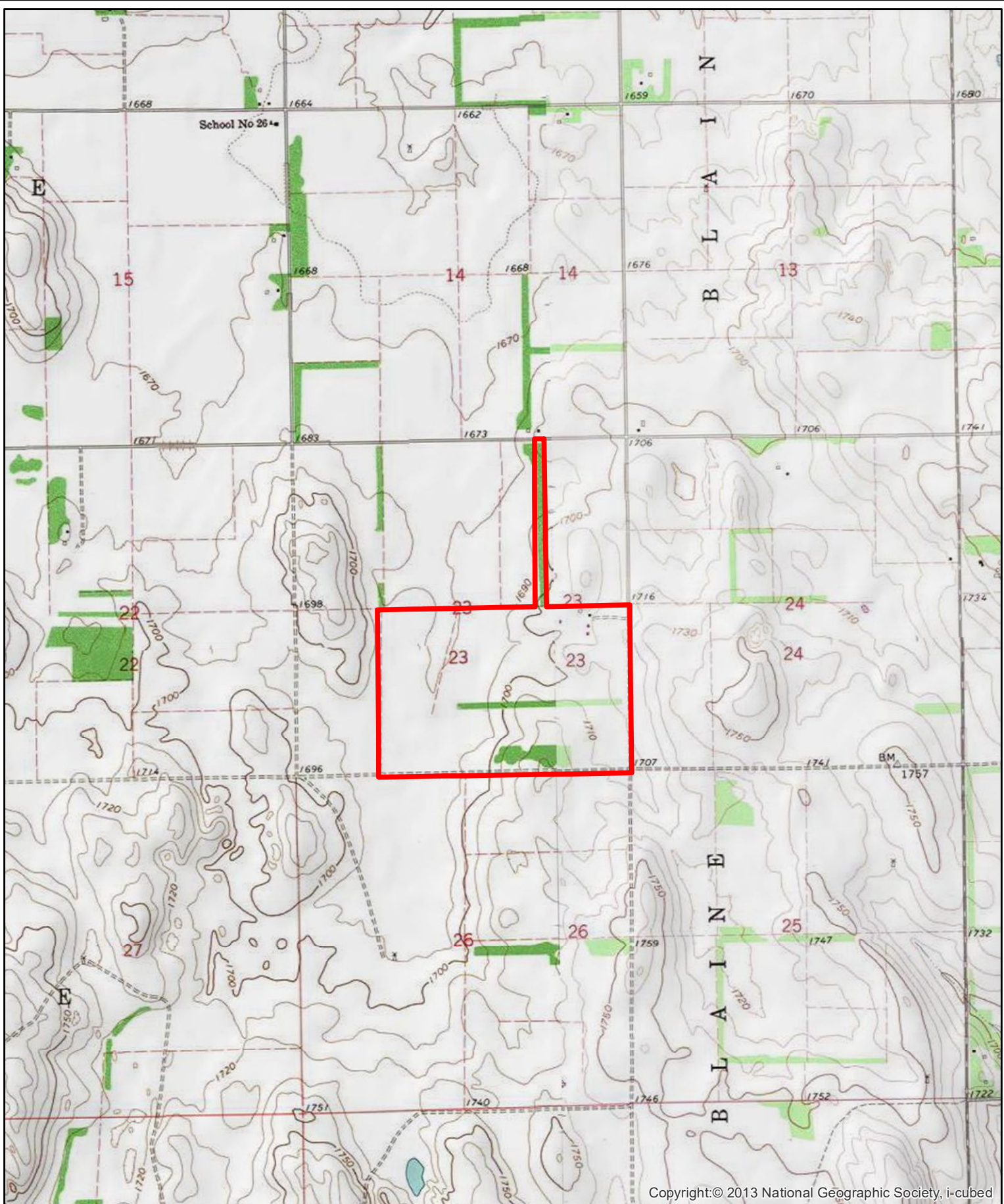
MAP SYMBOL	NAME	NON IRR LCC	IRR LCC	SRPG	ACRES
6703	Thurman loamy fine sand, 2 to 6 percent slopes	IVe	IVe	32	129.9
4553	Elsmere loamy fine sand, 0 to 3 percent slopes	IVw	IIIw	29	57.6
4376	Loup fine sandy loam, rarely flooded	Vw		56	39.3
6715	Thurman-Valentine complex, undulating	IVe	IVe	29	27.3
<b>TOTAL</b>				<b>34.7</b>	<b>254.1</b>



**L-1800727**  
**Gilbert Fuchs Estate**  
**Pierce County, Nebraska**

Latitude: 42.1266°N  
 Longitude: -97.6283°W  
 Imagery Source: USDA NAIP  
 Soil Data Source: USDA NRCS  
 Boundaries Are Approximate





**L-1800727**  
**Gilbert Fuchs Estate**  
**Pierce County, Nebraska**

Latitude: 42.1266°N  
Longitude: -97.6283°W  
Imagery Source: USDA NAIP  
Soil Data Source: USDA NRCS  
Boundaries Are Approximate