



TRG Tract Report: GOODE

Scott Hillard; American Forest Management

28 April, 2025

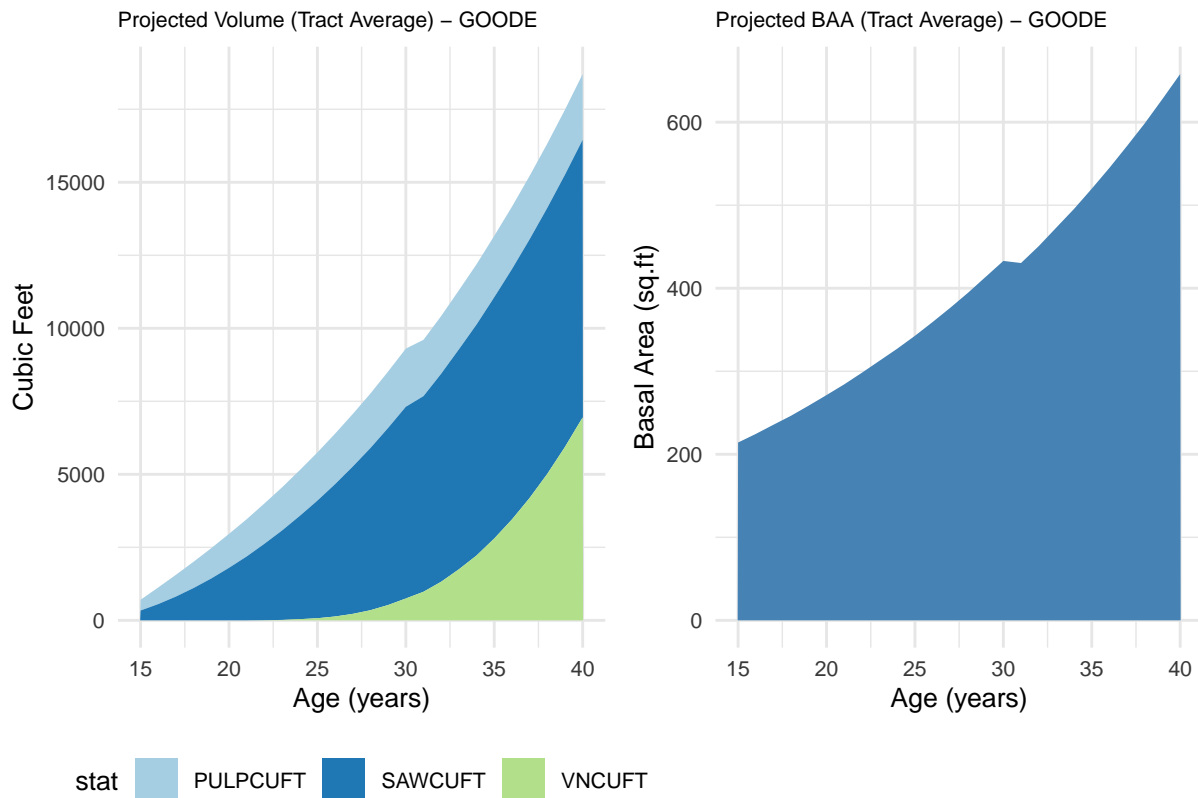
- All volume information (VNCUFT,PULPCUFT,SAWCUFT) represent projections based on inventory. These are for informational purposes. Actual volumes may vary from projections, likewise AFM cannot guarantee projections. Projections include silvicultural treatments, such as thinning. There are four stands Tank-9, Goode-4, Hansen-3, and Preuss-6 which were experimental plantings of white oak, or oak and walnut mixed. These were excluded from the analysis within those tracts. Overall they represent a total of approximately 42 acres.

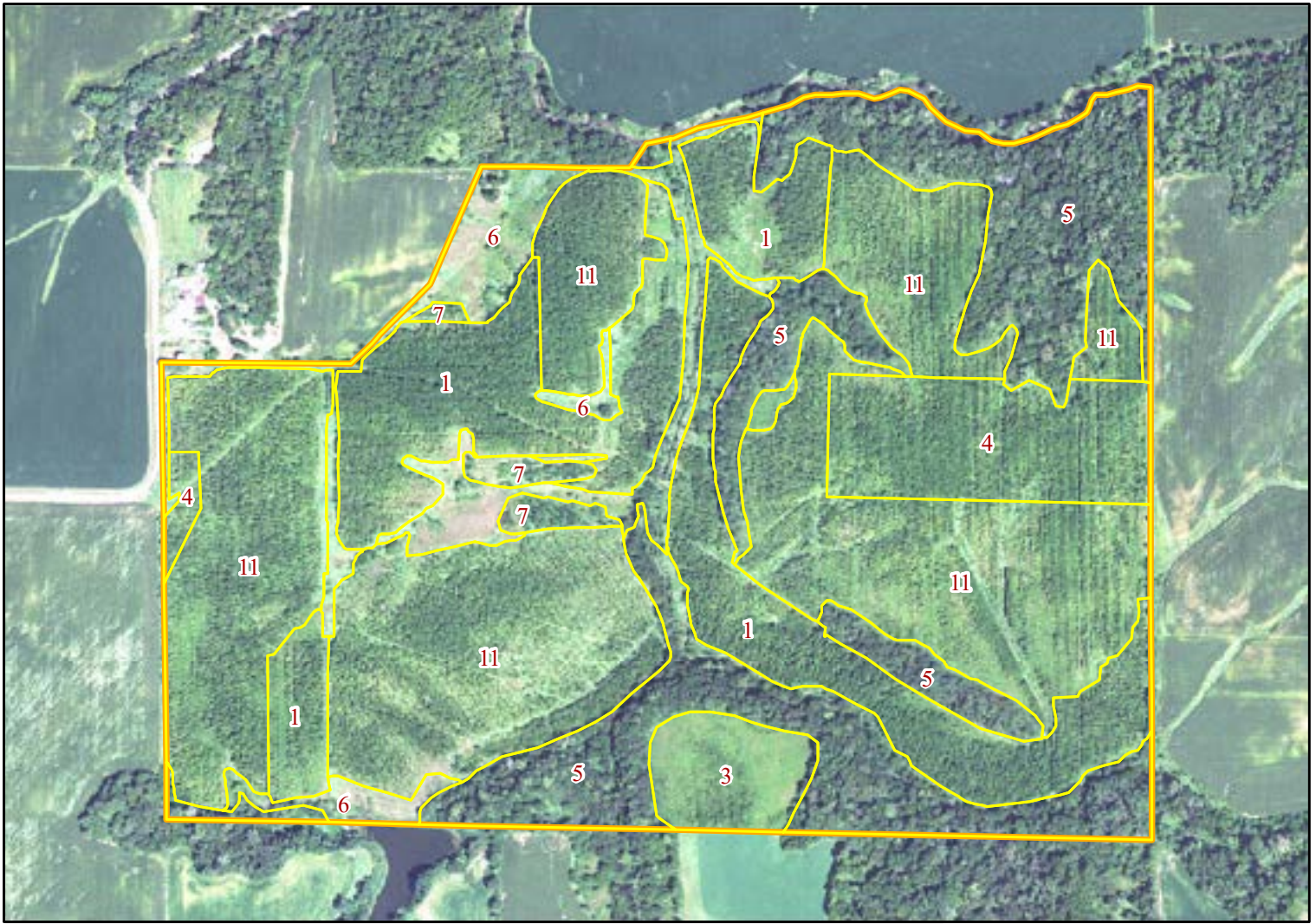
Table 1: Est. Current Stand Inventory for (Productive Area-Walnut Stands Only); GOODE

Stand	GIS.Area	Current_Age	DBH	BAPA	TPA	TH	SAWCUFT	PULPCUFT
1	46.79	14	6.1	52.1	242	47.7	199.9	196.1
3	6.00	14	5.4	38.6	227	39.7	74.1	80.6
7	2.64	14	4.6	54.7	443	34.6	2.9	4.9
11	89.25	14	5.0	34.7	241	36.4	23.4	26.7

Table 2: Weighted Tract Average (Productive Area-Walnut Stands Only)

GIS_Area_Productive	GIS_Area_Total	Avg_DBH	Avg_BA	Avg_TPA	Avg_HT	Avg_SAWCUFT	Avg_PULPCUFT
144.7	227.1	5.4	40.9	244.5	40.2	82.2	83.3





Tract Name	Stand	State	County	Acres	Origin	Dom Species	Year Est
GOODE	TRGBW005-208-1	Illinois	Rock Island	46.79	Planted	Walnut	2010
GOODE	TRGBW005-208-3	Illinois	Rock Island	6.00	Planted	Hardwood	2010
GOODE	TRGBW005-208-4	Illinois	Rock Island	15.13	Planted	Oak/Walnut	2010
GOODE	TRGBW005-208-5	Illinois	Rock Island	50.07	Natural	Hardwood	0
GOODE	TRGBW005-208-6	Illinois	Rock Island	17.25	Open	Undefined	0
GOODE	TRGBW005-208-7	Illinois	Rock Island	2.64	Planted	Walnut	2010
GOODE	TRGBW005-208-11	Illinois	Rock Island	89.25	Planted	Walnut	2010
				227.13			

GOODE



1 inch = 660 feet

1/27/2025 mgm

