



CERTIFIED MAIL--RETURN RECEIPT REQUESTED

RECEIVED

MAY 03 2021

Adams-Union County FSA

April 29, 2021



Based upon your recent request for a Highly Erodible Lands Determination, this letter is to notify you that a Preliminary Highly Erodible Lands (HEL) determination has been completed for your Farm #2558, Tract #2360, Field(s) 33, Adams County, Iowa as per Title 7 part 12 of the Code of Federal Regulations (CFR) and the National Food Security Act Manual.

I have completed the **Preliminary Technical Determination** for highly erodible lands on this tract. See the enclosed NRCS-CPA-026 "*Highly Erodible Land and Wetland Conservation Determination*" form and the aerial photo for location(s).

The fields listed as HEL on the enclosed NRCS-CPA-026 are HEL for reasons as provided by the boxes below that are checked:

The highly erodible soil map units in the field constitute 33.33 percent or more of the acreage in the field,

And/or

The highly erodible soil map units in the field equal 50 or more acres.

And/or

A previously determined HEL field was split, and the new field has HEL soil map units.

In order to remain eligible for USDA program benefits when producing an agricultural commodity on HEL land, you must apply an approved conservation plan or an acceptable conservation system. A conservation plan is a document that describes the conservation treatment measures that a person agrees to apply in order to meet the highly erodible land requirements or another specified goal. A conservation system is the combination of one or more conservation measures, or management practices that are used to achieve a substantial reduction in soil loss. The conservation plan or conservation system will address management, structural and other conservation practices that are needed to reduce sheet and rill erosion to acceptable levels as specified by regulation. In addition, all ephemeral gully erosion must be controlled. If you would like assistance in developing a conservation plan for HEL fields that you farm or if

Natural Resources Conservation Service
2243 Loomis Ave, Ste 2
Corning, IA 50841

Voice: (641) 322-3116, extension 3 Fax: (855) 223-7141
An Equal Opportunity Provider, Employer and Lender

you would like to know if your current farming system meets the HEL compliance requirements, please contact your local NRCS office.

If you do not consider the results of this determination to be adverse to you, no further action is required by you. If you feel that this determination is adverse, you may appeal this Preliminary Technical Determination by requesting in writing one of the options listed below within 30 calendar days of receipt of this letter. This Preliminary Technical Determination will become the Final Technical Determination 30 calendar days after receipt of this letter unless you request one of the following options in writing:

1. A reconsideration and field visit. During the field visit we will review the basis for our determination, answer any questions you have regarding this preliminary determination, and offer an opportunity for you to provide additional information regarding this determination. This request must be in writing and addressed to the District Conservationist who made the determination.

Melissa Johnson, District Conservationist
2243 Loomis Ave, Ste 2
Corning, IA 50841

2. Request mediation by contacting the Iowa Mediation Service at the address below. Mediation may be used in an attempt to settle your concerns with the preliminary highly erodible lands technical determination.

Iowa Mediation Service
1441 29th Street, Suite 120
West Des Moines, IA 50266
(515) 331-8081

If you choose to use mediation, the Natural Resources Conservation Service (NRCS) will pay up to one-half of the costs that are appropriate and reasonable which are associated with securing the services of a trained mediator when the services are provided on other than a voluntary basis. The NRCS will have final discretion over what is considered appropriate and reasonable.

3. You may waive your rights to mediation and a field review of the preliminary technical determination. This request must be in writing and addressed to Kurt Simon, State Conservationist, 210 Walnut Street, Room 693, Des Moines, IA 50309. In this case you will immediately be issued a final technical determination and appeal rights to National Appeals Division (NAD) and/or to the FSA County Committee.

If you do not consider the results of this determination adverse to you, no further action is required by you. If you choose to take no action, the Preliminary Technical Determination will become the **Final Technical Determination** 30 calendar days after receiving this notice. Once this determination becomes **Final**, you may appeal to the FSA County Committee, or to the National Appeals Division (NAD), at the addresses listed below within **60** calendar days from the date of receipt of this notice.

Natural Resources Conservation Service
2243 Loomis Ave, Ste 2
Corning, IA 50841
Voice: (641) 322-3116, extension 3 Fax: (855) 223-7141
An Equal Opportunity Provider, Employer and Lender

Adams FSA County Committee
2243 Loomis Ave, Ste 2
Corning, IA 50841

Or

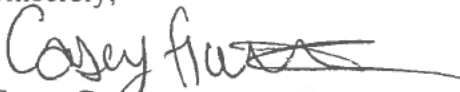
National Appeals Division
Post Office Box 68806
Indianapolis, IN 46268-0806
(800) 541-0457

Your appeal must be in writing and should state clearly what you are appealing and why you believe the Final Technical Determination is not correct. If you do not appeal within 30 days of this determination becoming Final to the FSA County Committee or the National Appeals Division (NAD), no further consideration on the matter will be given.

The 2014 Farm Bill connected producer eligibility for Federal crop insurance premium subsidy to compliance with the highly erodible land (HEL) provisions. Previous USDA participants who are currently not in compliance with the HEL provisions have 2 reinsurance years to develop and comply with an NRCS-approved conservation plan to remain eligible for Federal crop insurance premium subsidy. Producers who are subject to HEL compliance for the first time due to the 2014 Farm Bill have 5 reinsurance years to develop and comply with an NRCS-approved conservation plan when producing an agricultural commodity on HEL. If you are unsure about your status as a previous USDA participant, please inquire at your local Farm Service Agency office.

If you have any questions about this procedure or determination, please contact the Adams County Office at (641) 322-3116, ext 3. Also, if anyone else is associated with this farm; tenant, landlord, partner, I encourage you to discuss this determination with them.

Sincerely,






Casey Gathje
Soil Conservationist

Enclosures

CC: Adams County Farm Service Agency
Laton and Wilma Goodson


HIGHLY ERODIBLE LAND (HEL) DETERMINATION

1. Name: 		3. Location County: Adams, IA	
2. Address: 		4. Admin County: Adams, IA	
5. Request Form: AD-1026		7. Farm Number: 2558	
6. Request Date: 7/14/2020		8. Tract Number: 2360	
9. Are there HEL soil map units on this Tract? <input checked="" type="checkbox"/> Yes <input type="checkbox"/> No			
If a field is not listed, no determination was made at this time. Contact the Farm Service Agency for previously determined HEL status of fields not listed below. In order to be eligible for most USDA program benefits, a person must be implementing a conservation plan or using an approved conservation system on all HEL fields. Fields that are not highly erodible (NHEL) do not require implementation of an approved conservation system.			
Field(s)	HEL/NHEL	Sodbust (Y/N)	Field Acreage
33	HEL	No	8.99
10. The HEL determination was completed in: <input checked="" type="checkbox"/> Office <input type="checkbox"/> Field			
11. Remarks: This Highly Erodible Land determination was conducted offsite using the soil survey. If PHEL soil map units were present, they may have been evaluated using elevation data.			
The above HEL determination is correct and conducted in accordance with policies and procedures contained in the National Food Security Act Manual.			
12. Signature Designated Conservationist 		13. Date Thursday, April 29, 2021	

HIGHLY ERODIBLE LAND (HEL) DETERMINATION

Non-Discrimination Statement

In accordance with Federal civil rights law and U.S. Department of Agriculture (USDA) civil rights regulations and policies, the USDA, its Agencies, offices, and employees, and institutions participating in or administering USDA programs are prohibited from discriminating based on race, color, national origin, religion, sex, gender identity (including gender expression), sexual orientation, disability, age, marital status, family/parental status, income derived from a public assistance program, political beliefs, or reprisal or retaliation for prior civil rights activity, in any program or activity conducted or funded by USDA (not all bases apply to all programs). Remedies and complaint filing deadlines vary by program or incident.

Persons with disabilities who require alternative means of communication for program information (e.g., Braille, large print, audiotape, American Sign Language, etc.) should contact the responsible Agency or USDA's TARGET Center at (202)720-2600 (voice and TTY) or contact USDA through the Federal Relay Service at (800) 877-8339. Additionally, program information may be made available in languages other than English.

To file a program discrimination complaint, complete the USDA Program Discrimination Complaint Form, AD-3027, found online at How to File a Program Discrimination Complaint and at any USDA office or write a letter addressed to USDA and provide in the letter all of the information requested in the form. To request a copy of the complaint form, call (866) 632-9992. Submit your completed form or letter to USDA by:

(1) mail: U.S. Department of Agriculture
Office of the Assistant Secretary for Civil Rights
1400 Independence Avenue, SW
Washington, D.C. 20250-9410;

(2) fax: (202) 690-7442; or

(3) email: program.intake@usda.gov.

USDA is an equal opportunity provider, employer, and lender.



HEL Determination

4/29/2021

Farm: 2558

Tract: 2360

Customer(s): [REDACTED]

County: Adams, IA

Location: Carl 7

Assisted by: Casey Gathje

USDA-NRCS

Service Center: Corning

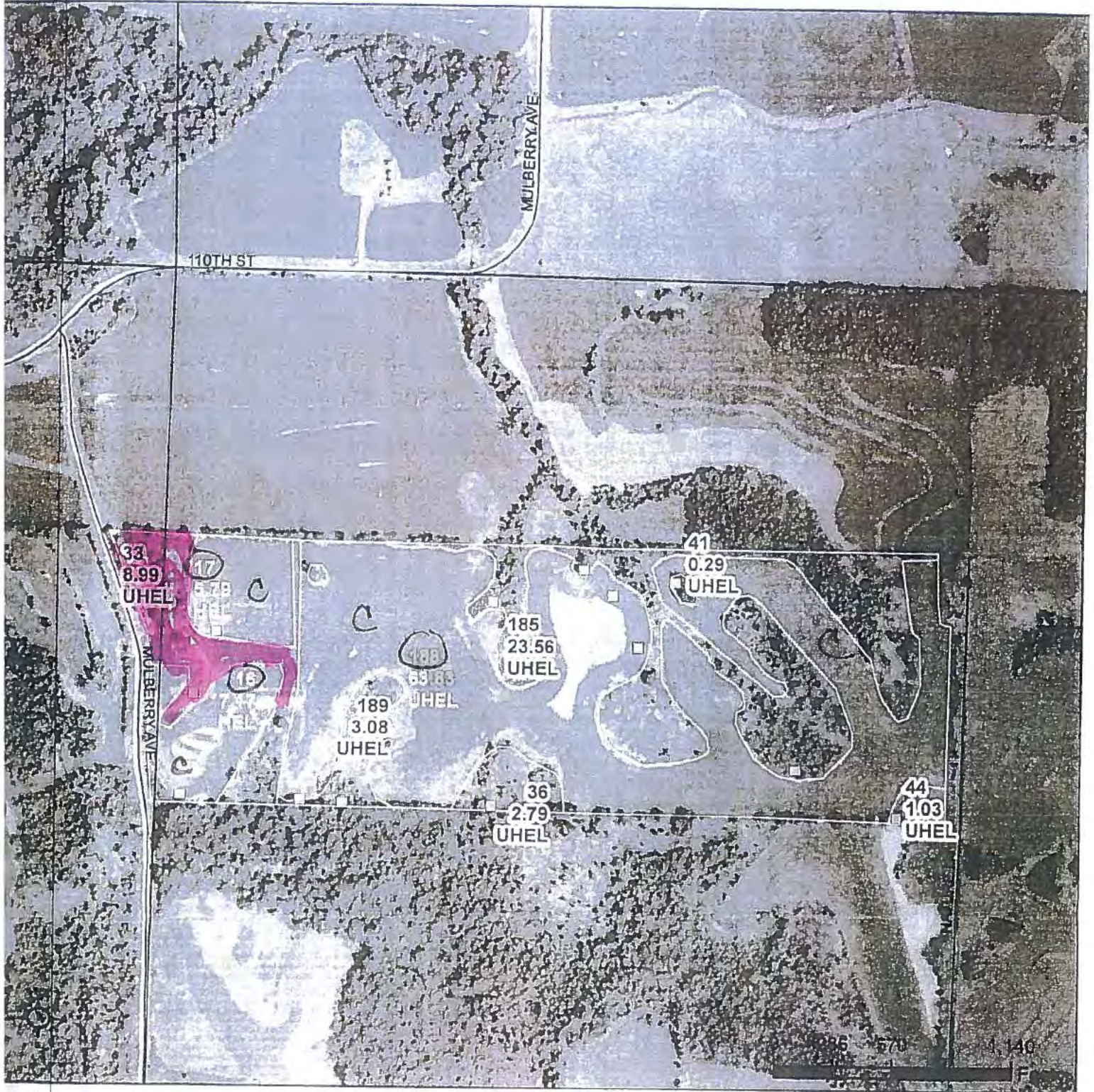


USDA NAIP, Iowa State University GIS Facility

Prepared with assistance from USDA-Natural Resources Conservation Service

- Field Determination
- HEL
- PHEL
- NHEL
- Iowa - PLSS Townships
- Iowa - Section Lines





gend GS_IA.sde.clu_a_ia003 ——— Iowa Roads plss_a_ia003
 Wetland.SDE.wetlands

2020 Program Year
 Map Created May 31, 2020

Wetland Determination Identifiers

- Restricted Use
- Limited Restrictions
- Exempt from Conservation Compliance Provisions

CORN 4-28

Farm 2558
Tract 2360
Carl 8

United States Department of Agriculture (USDA) Farm Service Agency (FSA) maps are for FSA Program administration only. This map does not represent a legal survey or reflect actual ownership, rather it depicts the information provided directly from the producer and/or National Agricultural Imagery Program (NAIP) imagery. The producer accepts the data 'as is' and assumes all risks associated with its use. USDA-FSA assumes no responsibility for actual or consequential damage incurred as a result of any user's reliance on this data outside FSA Programs. Wetland identifiers do not represent the size, shape, or specific determination of the area. Refer to your original determination (CPA 026 and attached maps) for exact



CERTIFIED MAIL--RETURN RECEIPT REQUESTED

November 5, 2018



RECEIVED

Adams-Union County FSA

Based upon your recent request for a Highly Erodible Lands Determination, this letter is to notify you that a Preliminary Highly Erodible Lands (HEL) determination has been completed for your Farm #2558, Tract #2360, Adams County, Iowa as per Title 7 part 12 of the Code of Federal Regulations (CFR) and the National Food Security Act Manual.

I have completed the **Preliminary Technical Determination** for highly erodible lands on this tract. See the enclosed NRCS-CPA-026 "*Highly Erodible Land and Wetland Conservation Determination*" form and the aerial photo for location(s).

The fields listed as HEL on the enclosed NRCS-CPA-026 are HEL for reasons as provided by the boxes below that are checked:

- The highly erodible soil map units in the field constitute 33.33 percent or more of the acreage in the field,

And/or

- The highly erodible soil map units in the field equal 50 or more acres.

And/or

- A previously determined HEL field was split, and the new field has HEL soil map units.

In order to remain eligible for USDA program benefits when producing an agricultural commodity on HEL land, you must apply an approved conservation plan or an acceptable conservation system. A conservation plan is a document that describes the conservation treatment measures that a person agrees to apply in order to meet the highly erodible land requirements or another specified goal. A conservation system is the combination of one or more conservation measures, or management practices that are used to achieve a substantial reduction in soil loss. The conservation plan or conservation system will address management, structural and other conservation practices that are needed to reduce sheet and rill erosion to acceptable levels as specified by regulation. In addition, all ephemeral gully erosion must be controlled. If you would like assistance in developing a conservation plan for HEL fields that you farm or if

you would like to know if your current farming system meets the HEL compliance requirements, please contact your local NRCS office.

If you do not consider the results of this determination to be adverse to you, no further action is required by you. If you feel that this determination is adverse, you may appeal this Preliminary Technical Determination by requesting in writing one of the options listed below within 30 calendar days of receipt of this letter. This Preliminary Technical Determination will become the Final Technical Determination 30 calendar days after receipt of this letter unless you request one of the following options in writing:

1. A reconsideration and field visit. During the field visit we will review the basis for our determination, answer any questions you have regarding this preliminary determination, and offer an opportunity for you to provide additional information regarding this determination. This request must be in writing and addressed to the District Conservationist who made the determination.

Darcy Brunner, Soil Conservationist
2243 South Loomis, Ste2
Corning, IA 50841

2. Request mediation by contacting the Iowa Mediation Service at the address below. Mediation may be used in an attempt to settle your concerns with the preliminary highly erodible lands technical determination.

Iowa Mediation Service
1441 29th Street, Suite 120
West Des Moines, IA 50266
(515) 331-8081

If you choose to use mediation, the Natural Resources Conservation Service (NRCS) will pay up to one-half of the costs that are appropriate and reasonable which are associated with securing the services of a trained mediator when the services are provided on other than a voluntary basis. The NRCS will have final discretion over what is considered appropriate and reasonable.

3. You may waive your rights to mediation and a field review of the preliminary technical determination. This request must be in writing and addressed to Kurt Simon, State Conservationist, 210 Walnut Street, Room 693, Des Moines, IA 50309. In this case you will immediately be issued a final technical determination and appeal rights to National Appeals Division (NAD) and/or to the FSA County Committee.

If you do not consider the results of this determination adverse to you, no further action is required by you. If you choose to take no action, the Preliminary Technical Determination will become the **Final Technical Determination** 30 calendar days after receiving this notice. Once this determination becomes **Final**, you may appeal to the FSA County Committee, or to the

Natural Resources Conservation Service
2243 South Loomis, Ste 2
Corning, IA 50841
Voice (641) 322-3116 – Fax (855) 223-7141
An Equal Opportunity Provider, Employer and Lender

National Appeals Division (NAD), at the addresses listed below within 60 calendar days from the date of receipt of this notice.

FSA County Committee
2243 South Loomis, Ste 1
Corning, IA 50841

Or

National Appeals Division
Post Office Box 68806
Indianapolis, IN 46268-0806
(800) 541-0457

Your appeal must be in writing and should state clearly what you are appealing and why you believe the Final Technical Determination is not correct. If you do not appeal within 30 days of this determination becoming Final to the FSA County Committee or the National Appeals Division (NAD), no further consideration on the matter will be given.

The 2014 Farm Bill connected producer eligibility for Federal crop insurance premium subsidy to compliance with the highly erodible land (HEL) provisions. Previous USDA participants who are currently not in compliance with the HEL provisions have 2 reinsurance years to develop and comply with an NRCS-approved conservation plan to remain eligible for Federal crop insurance premium subsidy. Producers who are subject to HEL compliance for the first time due to the 2014 Farm Bill have 5 reinsurance years to develop and comply with an NRCS-approved conservation plan when producing an agricultural commodity on HEL. If you are unsure about your status as a previous USDA participant, please inquire at your local Farm Service Agency office.

If you have any questions about this procedure or determination, please contact me at (641) 322-3116. Also, if anyone else is associated with this farm; tenant, landlord, partner, I encourage you to discuss this determination with them.

Sincerely,



Darcy Brunner
Soil Conservationist

Enclosures

CC: Laton and Wilma Goodson, 27826 State HWY CC, Maryville, MO 64468
Lori Altheide, Assistant State Conservationist (FO), NRCS, Atlantic, IA
Karla Focht, District Conservationist, NRCS, Corning, IA
Todd Perdew, CED, Adams County FSA, Corning, IA



HIGHLY ERODIBLE LAND AND WETLAND CONSERVATION DETERMINATION

Name Address:	Laton and Wilma Goodson 27826 State HWY CC Maryville, MO 64468	Request Date:	6/4/18	County:	Adams
Agency or Person Requesting Determination:	FSA	Tract No:	2360	FSA Farm No.:	2558

Section I - Highly Erodible Land

Is a soil survey now available for making a highly erodible land determination?	Yes
Are there highly erodible soil map units on this farm?	Yes

Fields in this section have undergone a determination of whether they are highly erodible land (HEL) or not; fields for which an HEL Determination has not been completed are not listed. In order to be eligible for USDA benefits, a person must be using an approved conservation system on all HEL.

Field(s)	HEL(Y/N)	Sodbust (Y/N)	Acres	Determination Date
2	Yes	No	14.3	5/1/1989
5	Yes	No	2.7	5/1/1989
9	Yes	No	83	5/1/1989
10	Yes	No	8.7	5/1/1989
18	Yes	No	2.6	5/1/1989

The Highly Erodible Land determination was completed in the office.

Section II - Wetlands

Fields in this section have had wetland determinations completed. See the Definition of Wetland Label Codes for additional information regarding allowable activities under the wetland conservation provisions of the Food Security Act and/or when wetland determinations are necessary to determine USDA program eligibility.

Field(s)	Wetland Label*	Occurrence Year (CW)	Acres	Determination Date	Certification Date

The wetland determination was completed in the _____ It was _____ to the person on _____

Remarks: Fields were restructured to depict correct land use based on current farming operation. Field 57 determined HEL on 11/5/18. Parts of field 57 have previously been labeled as sodbusted. Wetland determination has been completed on tract 2360 - see determination for details.

I certify that the above determinations are correct and were conducted in accordance with policies and procedures contained in the National Food Security Act Manual.

Signature Designated Conservationist	Date
<i>Karla Focht, DC</i>	<i>11/7/18</i>

The U.S. Department of Agriculture (USDA) prohibits discrimination in all its programs and activities on the basis of race, color, national origin, gender, religion, age, disability, political beliefs, sexual orientation, and marital or family status. (Not all prohibited bases apply to all programs.) Persons with disabilities who require alternative means for communication of program information (Braille, large print, audiotape, etc.) should contact USDA's TARGET Center at 202-720-2600 (voice and TDD). To file a complaint of discrimination, write USDA, Assistant Secretary for Civil Rights, 1400 Independence Avenue, S.W., Stop 9410, Washington, DC 20250-9410, or call toll-free at (866) 632-9992 (English) or (800) 877-8339 (TDD) or (866) 377-8642 (English Federal-relay) or (800) 845-6136 (Spanish Federal-relay). USDA is an equal opportunity provider and employer.

CPA-026e Supplemental Worksheet

Section I – Highly Erodible Land

Field(s)	HEL (Y/N)	Sodbust (Y/N)	Acres	Determination Date
20	Yes	No	3.8	5/1/1989
22	No	No	3.4	5/1/1989
23	Yes	No	9.4	5/1/1989
57	Yes	Yes	108	11/5/2018
58	No	No	188.7	5/1/1989

Remarks:

The U.S. Department of Agriculture (USDA) prohibits discrimination in all its programs and activities on the basis of race, color, national origin, gender, religion, age, disability, political beliefs, sexual orientation, and marital or family status. (Not all prohibited bases apply to all programs.) Persons with disabilities who require alternative means for communication of program information (Braille, large print, audiotape, etc.) should contact USDA’s TARGET Center at 202-720-2600 (voice and TDD). To file a complaint of discrimination, write USDA, Assistant Secretary for Civil Rights, 1400 Independence Avenue, S.W., Stop 9410, Washington, DC 20250-9410, or call toll-free at (866) 632-9992 (English) or (800) 877-8339 (TDD) or (866) 377-8642 (English Federal-relay) or (800) 845-6136 (Spanish Federal-relay). USDA is an equal opportunity provider and employer.

Laton and Wilma Goodson
27826 State HWY CC
Maryville, MO 64468

2558

Adams

**CERTIFICATION OF HIGHLY ERODIBLE LAND
CONSERVATION PLAN(S) AND SYSTEMS**

CONSERVATION PLAN APPROVED

4. TRACT NUMBER(S)	5. FIELD NUMBERS	6. ACRES	7. PLAN APPROVED (Date)	8. CONSERVATION SYSTEM APPLIED (Date)	9. REMARKS
2360	2	14.3			HEL - 5/1/1989
2360	5	2.7			HEL - 5/1/1989
2360	9	83			HEL - 5/1/1989
2360	10	8.7			HEL - 5/1/1989
2360	18	2.6			HEL - 5/1/1989
2360	20	3.8			HEL - 5/1/1989
2360	23	9.4			HEL - 5/1/1989
2360	57	108			HEL - 11/5/18

10. REMARKS

Fields were restructured to depict correct land use based on current farming operation. Field 57 determined HEL on 11/5/18. Parts of field 57 have previously been labeled as sodbusted. Wetland determination has been completed on tract 2360 - see determination for details.

Karla Focht, DC

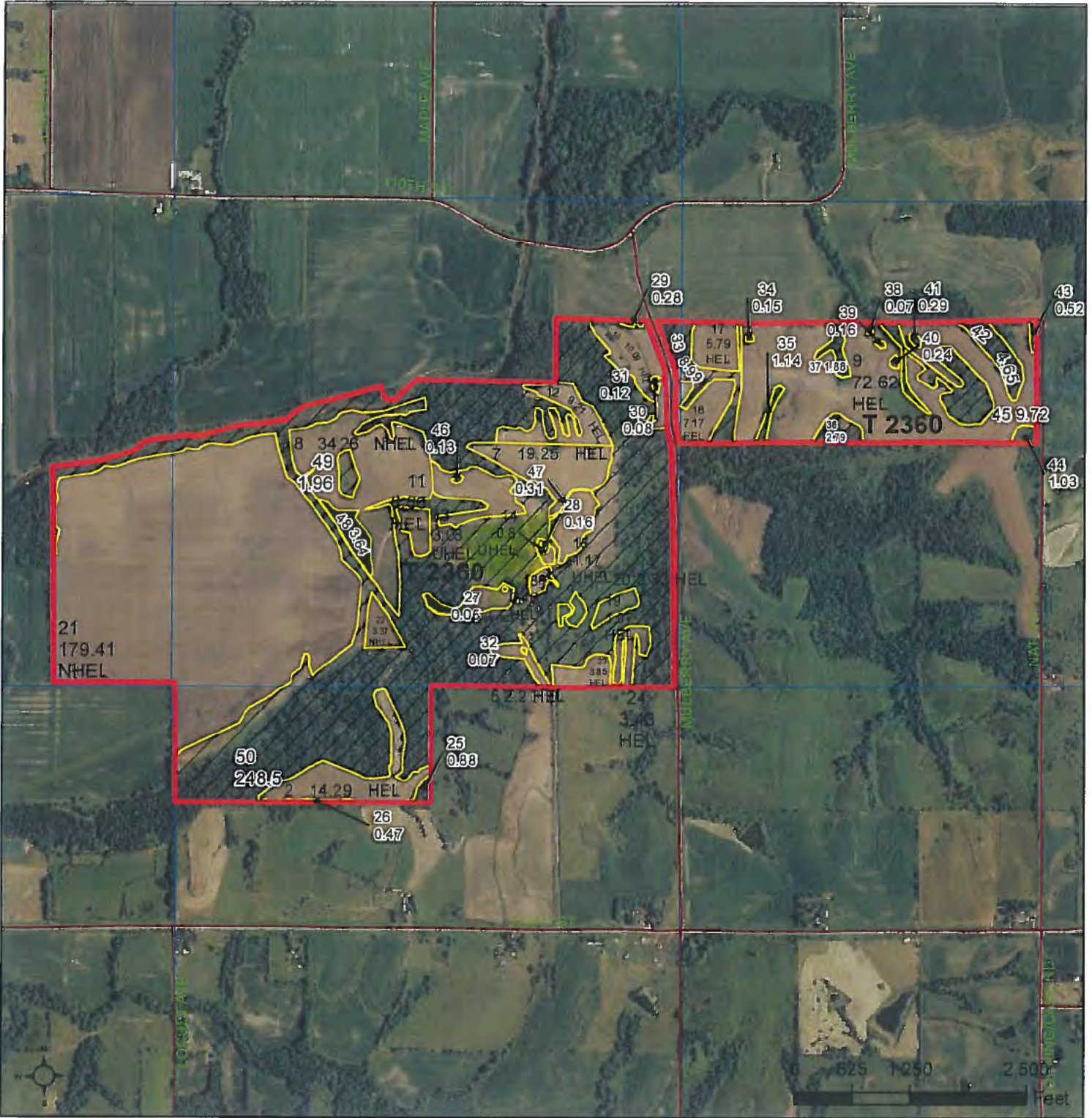
11/7/18



Field 59, 60 + 63 have been determined in previous years as larger parent fields. Rest will likely be SAE. KF 6/7/18

- Legend**
- Iowa Roads
 - PLSS
 - GIS_IA.sde.clu_a_ia003
 - National_Wetland.SDE.wetlands
 - Wetland Determination Identifiers**
 - Restricted Use
 - ▽ Limited Restrictions
 - Exempt from Conservation Compliance Provisions

United States Department of Agriculture (USDA) Farm Service Agency (FSA) maps are for FSA Program administration only. This map does not represent a legal survey or reflect actual ownership; rather it depicts the information provided directly from the producer and/or National Agricultural Imagery Program (NAIP) imagery. The producer accepts the data 'as is' and assumes all risks associated with its use. USDA-FSA assumes no responsibility for actual or consequential damage incurred as a result of any user's reliance on this data outside FSA Programs. Wetland identifiers do not represent the size, shape, or specific determination of the area. Refer to your original determination (CPA-026 and attached maps) for exact boundaries and determinations or contact USDA Natural Resources Conservation Service (NRCS).



- Common Land Unit**
- Cropland
 - Non-cropland
 - Conservation Reserve Program
- Wetland Determination Identifiers**
- Restricted Use
 - ▼ Limited Restrictions
 - Exempt from Conservation Compliance Provisions
- Tract Boundary
- Section Line

2014 Program Year
Map Created November 21, 2013

Farm **2558**
Tract **2360**

United States Department of Agriculture (USDA) Farm Service Agency (FSA) maps are for FSA Program administration only. This map does not represent a legal survey or reflect actual ownership; rather it depicts the information provided directly from the producer and/or National Agricultural Imagery Program (NAIP) imagery. The producer accepts the data 'as is' and assumes all risks associated with its use. USDA-FSA assumes no responsibility for actual or consequential damage incurred as a result of any user's reliance on this data outside FSA Programs. Wetland identifiers do not represent the size, shape, or specific determination of the area. Refer to your original determination (CPA-026 and attached maps) for exact boundaries and determinations or contact USDA Natural Resources Conservation Service (NRCS).

Certified Wetland Determination



USDA NRCS
 United States Department of Agriculture
 Natural Resources Conservation Service

- Legend**
- Certified Wetland Determination Boundary
 - Wetlands

note: this determination is valid for the area within the dashed red line

- Determination Labels**
- Artificial Wetland (AW)
 - Covered Wetland (CW)
 - Farmed Wetland (FW)
 - Farmed Wetland Pasture (FWP)
 - Non Wetland (NW)
 - Prior Converted Cropland (PC)
 - Wetland (W)

Certified by: Marc Zucco
Date: 9/29/2014

This certified wetland determination/delineation has been conducted for the purpose of implementing the wetland conservation provisions of the Food Security Act of 1985. This determination/delineation may not be valid for identifying the extent of the COE's Clean Water Act jurisdiction for this site. If you intend to conduct any activity that constitutes a discharge of dredged or fill material into wetlands or other waters, you should request a jurisdictional determination from the local office of the COE prior to starting the work.



United States Department
of Agriculture

Natural Resources
Conservation Service

NRCS-CPA-026e
9/2012

HIGHLY ERODIBLE LAND AND WETLAND CONSERVATION DETERMINATION

Name	Laton C Goodson	Request Date:	8/26/2014	County:	Adams
Address:	25101 State Highway EE Maryville MO 64468-7386				
Agency or Person Requesting Determination:	Farm Service Agency	Tract No:	2360	FSA Farm No.:	2558

Section I - Highly Erodible Land

Is a soil survey now available for making a highly erodible land determination?	Y
Are there highly erodible soil map units on this farm?	Y

Fields in this section have undergone a determination of whether they are highly erodible land (HEL) or not; fields for which an HEL Determination has not been completed are not listed. In order to be eligible for USDA benefits, a person must be using an approved conservation system on all HEL.

Field(s)	HEL(Y/N)	Sodbust (Y/N)	Acres	Determination Date
2	Y	N	14.3	5/1/1989
5	Y	N	2.3	5/1/1989
8	N	N	34.3	5/1/1989
9	Y	N	72.6	5/1/1989
See Attached Page.				

The Highly Erodible Land determination was completed in the office.

Section II - Wetlands

Fields in this section have had wetland determinations completed. See the Definition of Wetland Label Codes for additional information regarding allowable activities under the wetland conservation provisions of the Food Security Act and/or when wetland determinations are necessary to determine USDA program eligibility.

Field(s)	Wetland Label*	Occurrence Year (CW)	Acres	Determination Date	Certification Date
Tract - Other	PC/NW		557.53, 115.08	9/29/2014	9/29/2014
12	W		2.12	9/29/2014	9/29/2014

The wetland determination was completed in the Field It was Mailed to the person on 9/30/2014

Remarks:
This replaces 026e dated 8/19/14

I certify that the above determinations are correct and were conducted in accordance with policies and procedures contained in the National Food Security Act Manual.

Signature Designated Conservationist	Date
<i>Jan Zuer</i>	9/29/2014

The U S Department of Agriculture (USDA) prohibits discrimination in all its programs and activities on the basis of race, color, national origin, gender, religion, age, disability, political beliefs, sexual orientation, and marital or family status. (Not all prohibited bases apply to all programs.) Persons with disabilities who require alternative means for communication of program information (Braille, large print, audiotape, etc.) should contact USDA's TARGET Center at 202-720-2600 (voice and TDD). To file a complaint of discrimination, write USDA, Assistant Secretary for Civil Rights, 1400 Independence Avenue, S.W., Stop 9410, Washington, DC 20250-9410, or call toll-free at (866) 632-9992 (English) or (800) 877-8339 (TDD) or (866) 377-8642 (English Federal-relay) or (800) 845-6136 (Spanish Federal-relay). USDA is an equal opportunity provider and employer.



HIGHLY ERODIBLE LAND AND WETLAND CONSERVATION DETERMINATION

Name Address:	Laton C Goodson 25101 State Highway EE Maryville, MO	Request Date:	8/26/2014	County: Adams
Agency or Person Requesting Determination:	FSA	Tract No:	2360	FSA Farm No.: 2558

Section I - Highly Erodible Land

Is a soil survey now available for making a highly erodible land determination?	Y
Are there highly erodible soil map units on this farm?	Y

Field(s)	HEL(Y/N)	Sodbust(Y/N)	Acres	Determination Date
10	Y	N	10.1	5/1/1989
12	Y	N	9.2	5/1/1989
16	Y	N	7.2	5/1/1989
17	Y	N	5.8	5/1/1989
18	Y	N	0.5	5/1/1989
19	Y	N	1.1	5/1/1989
20	Y	N	2.3	5/1/1989
21	N	N	184.3	5/1/1989
22	N	N	3.4	5/1/1989
23	Y	N	3.9	5/1/1989
24	Y	N	3.4	5/1/1989
51	Y	Y	64.1	8/19/2014

The Highly Erodible Land determination was completed in the office.

Section II - Wetlands

Are there hydric soils on this farm?	Y
--------------------------------------	---

Field(s)	Wetland Label*	Occurrence Year (CW)**	Acres	Determination Date	Certification Date

The wetland determination was completed in the field. It was mailed to the person on .

Remarks: This replaces previously dated 026e.

I certify that the above determinations are correct and were conducted in accordance with policies and procedures contained in the National Food Security Act Manual.

Signature Designated Conservationist	Date
	9/29/2014

The U.S. Department of Agriculture (USDA) prohibits discrimination in all its programs and activities on the basis of race, color, national origin, gender, religion, age, disability, political beliefs, sexual orientation, and marital or family status. (Not all prohibited bases apply to all programs.) Persons with disabilities who require alternative means for communication of program information (Braille, large print, audiotape, etc.) should contact USDA's TARGET Center at 202-720-2600 (voice and TDD).

To file a complaint of discrimination, write USDA, Director, Office of Civil Rights, Room 326W, Whitten Building, 14th and Independence Avenue SW, Washington, DC 20250-9410 or call (202) 720-5964 (voice or TDD). USDA is an equal opportunity provider and employer.

United States Department of Agriculture



Natural Resources Conservation Service
904 East Taylor St. Creston, IA 50801

RECEIVED

SEP 30 2014

September 29, 2014

ADAMS-UNION COUNTY FSA

Laton C Goodson
25101 State Highway EE
Maryville MO 64468-7386

RE: Certified Wetland Determination – Farm 2558, Tract 2360, Adams County, Iowa

Dear Producer:

In response to a FSA CPA-569 report, a preliminary wetland determination has been completed for all or part of the above referenced tract, in accordance with 7 CFR Part 12 and the National Food Security Act Manual (5th ed.). Please see the enclosed form (NRCS-CPA-026e) and map(s) for determination findings, label definitions, and applicable field locations.

The **Preliminary Technical Determination** is that the following areas have been identified, as described on the enclosed form and shown on the map:

- **Wetland (W)**
- **Non Wetland (NW)**
- **Prior Converted Cropland (PC)**

Determination Notes

The 2.12 acres labeled W in field 12 meet the wetland definition established in federal regulation, identified using NRCS policy, and are not exempt from the wetland conservation provisions of the 1985 Food Security Act, as amended.

Wetland (W) areas may be farmed under natural conditions without removal of wood vegetation or hydrologic manipulation. Normal tillage and farming practices are not considered manipulation, and may be implemented as long as the tilling does not include the redistribution of surface material in a manner that converts wetland areas or mechanized land-clearing.

Non Wetland (NW), and **Prior Converted Cropland (PC)** areas are exempt from the wetland conservation provisions of the Food Security Act of 1985, as amended, unless further drainage manipulation affects adjacent wetlands.

By contacting your local NRCS field office prior to performing hydrologic alterations, we can develop a plan to ensure such activities will not jeopardize your USDA program benefits. Please be aware that wetlands may exist outside of the indicated determination boundary; and, in order to maintain your eligibility for USDA program benefits, any manipulation of wetland areas that makes the production of an agricultural commodity possible is prohibited (i.e. more production acres, more farmable years, and/or reduced crop stress).

Wetland manipulation may result from the following activities and may alter hydrology even if installed offsite from the effected wetland:

- draining (subsurface tiles or surface ditches)
- diverting water from a wetland (diversions, terraces, or intercepting tile)
- removing woody vegetation
- filling, dredging, and land leveling

This certified wetland determination/delineation has been conducted for the purpose of implementing the Food Security Act of 1985 as amended. This determination/delineation may not be valid for identifying the extent of the United States Army Corps of Engineers (COE) Clean Water Act jurisdiction for this site. If you intend to conduct any activity that constitutes a discharge of dredged or fill material into wetlands or other waters of the United States including lakes, rivers, intermittent or perennial streams, you should request a jurisdictional determination from the Rock Island District COE office prior to starting your work.

This preliminary determination will become final 30 calendar days after receipt of this letter if you do not appeal. Please find the **Appeals Rights** document enclosed in this letter explaining your options if you consider this determination adverse. This will be the only notification you will receive unless you contest this determination.

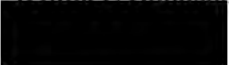
If you have any question about this procedure or determination, you may contact me at your convenience at 641-342-2917 or john.derbish@ia.usda.gov. Due to frequent traveling, please understand that I may not always be available by phone, and messages may have a response time of 1-2 days. Also, do not hesitate to contact your local NRCS field office to discuss the findings.

Sincerely,



Marc Zucco
Area Resource Soil Scientist

Enclosures

cc Adams County FSA
Wilma L. Goodson


United States Department of Agriculture



Natural Resources Conservation Service

Appeal Rights

In accordance with the NRCS's appeal procedures found at 7 CFR Part 614, you have the right to appeal the preliminary technical determination. If the preliminary determination is not appealed within 30 days, then the determination becomes final, and you are granted further appeal rights, as described below.

For Preliminary Technical Determinations

If this preliminary determination is considered adverse, you may appeal the preliminary determination by filing a written request to the NRCS field office servicing your farm no later than 30 calendar days after you receive this notice. You may request the following:

- 1) A reconsideration and field visit. If you request reconsideration, you have the right to a field meeting for an informal review. During the review you or your representative may provide additional information and discuss the facts relating to the preliminary technical determination. After the reconsideration, a final determination will be issued and you may further appeal the determination to the FSA county committee (COC) or the National Appeals Division (NAD).
- 2) Mediation may be used in an attempt to settle your concerns with the determination and resolve the matter by mutual agreement. Request mediation by contacting the Iowa Mediation Service (Iowa Mediation Service 1441 29th Street, Suite 120 West Des Moines, IA 50266, (515)331-8081). If you choose to use mediation, NRCS will pay up to one-half of the costs that are appropriate and reasonable which are associated with securing the services of a trained mediator when the services are provided on other than a voluntary basis. The NRCS will have final discretion over what is considered appropriate and reasonable.
- 3) You may waive your rights to mediation and/or reconsideration of the preliminary technical determination. This request must be in writing and addressed to Jay T. Mar, State Conservationist, 210 Walnut Street, Room 693, Des Moines, IA 50309. In this case you will immediately be issued a final technical determination and appeal rights to the National Appeals Division (NAD) and/or to the FSA county committee (COC).

For Final Technical Determinations

If neither mediation nor reconsideration is requested within the initial 30-day period, this determination becomes final, and you then have an additional 30 calendar days to appeal the final determination to FSA COC and/or NAD as described below.

- 1) You may appeal the final determination to the FSA county committee (COC) in accordance with the FSA appeal procedures found at 7 CFR Part 780. If you appeal to the COC, you have the right to an informal hearing that you or your representative may attend either personally or by telephone. To appeal, write to the COC at the USDA office servicing your farm and explain why you believe this determination is erroneous.
- 2) You may appeal this determination to the National Appeals Division (NAD) in accordance with the NAD appeal procedures found at 7 CFR Part 11. If you appeal to NAD, you have the right to a hearing that you or your representative may attend. To appeal, you must write to NAD at the Post Office Box 68806 Indianapolis, IN 46268, phone number 800-541-0457, explain why you believe this determination is erroneous, and provide a copy to FSA. You must personally sign your written appeal to NAD and include a copy of this letter.

Helping People Help the Land

An Equal Opportunity Provider and Employer

United States Department of Agriculture



Natural Resources Conservation Service

August 4, 2014

RE: Certified Wetland Determination – Farm 2558, Tract 2360, Adams County, Iowa

Adams Co. FSA,

This AD-1026 is no longer valid due to change in operator [REDACTED]

Sincerely,

A handwritten signature in blue ink that reads "Marc Zucco".

Marc Zucco
Area Resource Soil Scientist

RECEIVED

AUG 19 2014

ADAMS-UNION COUNTY FSA



United States Department of Agriculture

8-19-2014

Laton C Goodson
25101 State Highway EE
Maryville, MO 64468

Dear Mr. Goodson,

Based upon your recent request for a Highly Erodible Lands Determination, this letter is to notify you that a Preliminary Highly Erodible Lands (HEL) determination has been completed for your **Farm # 2558, Tract # 2360**, Adams County, Iowa as per Title 7, Code of Federal Regulations (CFR), Part 12.

I have completed the **Preliminary Technical Determination** for highly erodible lands on this tract. See the enclosed NRCS-CPA-026 "*Highly Erodible Land and Wetland Conservation Determination*" form and the aerial photo for location(s).

The fields listed as HEL on the enclosed NRCS-CPA-026 are HEL because:

- The highly erodible soil map units in the field constitute 33.33 percent or more of the acreage in the field,
- and / or
- The highly erodible soil map units in the field equal 50 or more acres.

This preliminary determination will become final **30** days after receipt of this letter unless you request one of the following options in writing:

1. A reconsideration and field visit. During the field visit we will review the basis for our determination, answer any questions you have regarding this preliminary determination, and offer an opportunity for you to provide additional information regarding this determination.
2. Request mediation by contacting the Iowa Mediation Service at the address below. Mediation may be used in an attempt to settle your concerns with the preliminary highly erodible lands technical determination.

Iowa Mediation Service
1025 Ashworth Road, Suite 504
West Des Moines, IA 50265
(515) 331-8081

Natural Resources Conservation Service
2243 Loomis Ave, Ste 2
Corning, IA 50841-8123
Phone: (641) 322-3116 - FAX (855) 223-7141
An Equal Opportunity Provider and Employer

If you choose to use mediation, the Natural Resources Conservation Service (NRCS) will pay up to one-half of the costs that are appropriate and reasonable which are associated with securing the services of a trained mediator when the services are provided on other than a voluntary basis. The NRCS will have final discretion over what is considered appropriate and reasonable.

3. You may waive your rights to mediation and a field review of the preliminary technical determination. This request must be in writing and addressed to Jay T. Mar, State Conservationist, 210 Walnut Street, Room 693, Des Moines, IA 50309. In this case you will immediately be issued a final technical determination and appeal rights to National Appeals Division (NAD) and/or to the FSA County Committee.

If you do not consider the results of this determination adverse to you, no further action is required by you. If you choose to take no action, the Preliminary Technical Determination will become the **Final Technical Determination** 30 days after receiving this notice. Once this determination becomes **Final**, you may appeal to the FSA County Committee, or to the National Appeals Division (NAD), at the addresses listed below within **60** calendar days from the date of receipt of this notice.

Adams FSA County Committee
2243 Loomis Ave, STE 2
Corning, IA 50841

or

National Appeals Division
Post Office Box 68806
Indianapolis, IN 46268-0806
(800) 541-0457

If you have any questions about this procedure or determination, please contact me at 641-322-3116. Also, if anyone else is associated with this farm; tenant, landlord, partner, I encourage you to discuss this determination with them.

Sincerely,



Doug Davenport
District Conservationist

Enclosures

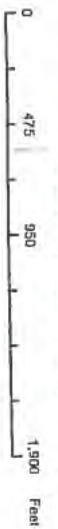
cc: Adams County FSA
Wilma L Goodson



Farm - 2558
Tract - 2360
Washington - 12
April 7 9 40



Prepared by Adams County FSA



1 inch equals 825 feet



Legend

- Field Boundary
- Wetlands

Customer(s): LATON C GOODSON

Washington 12 &
Carl 7 & 8
Farm: 2558
Tract: 2360

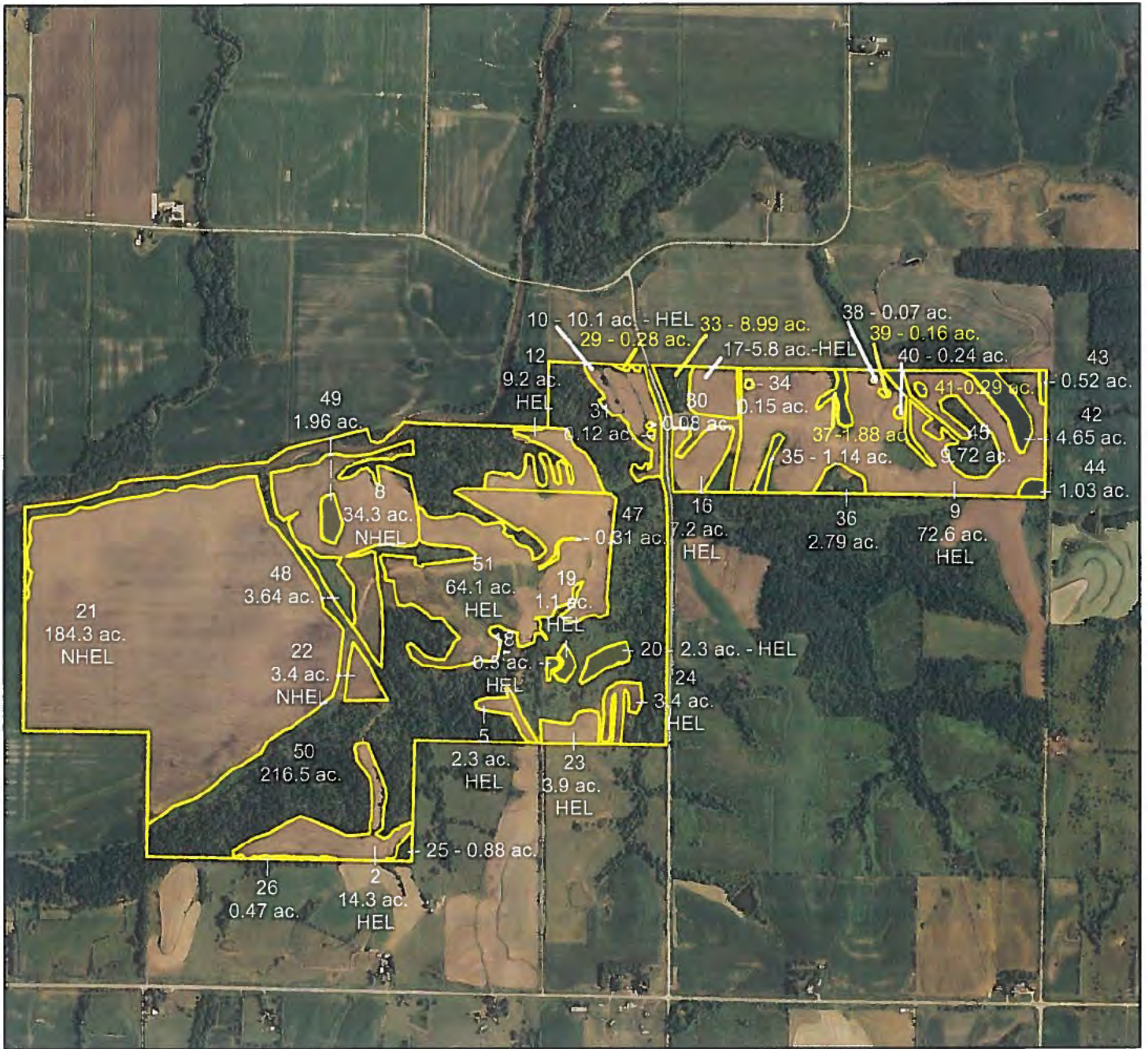
Field Office: CORNING SERVICE CENTER

Agency: NRCS

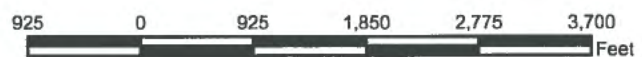
Assisted By: EMILY ANDERSON

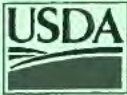
State and County: IA, Adams

Date: 8/19/2014



Consplan_t2360





HIGHLY ERODIBLE LAND AND WETLAND CONSERVATION DETERMINATION

Name Address:	Laton C Goodson 25101 State Highway EE Maryville, MO	Request Date:	4-10-2013	County:	Adams
Agency or Person Requesting Determination:	FSA	Tract No:	2360	FSA Farm No.:	2558

Section I - Highly Erodible Land

Is a soil survey now available for making a highly erodible land determination?	Y
Are there highly erodible soil map units on this farm?	Y

<u>Field(s)</u>	<u>HEL(Y/N)</u>	<u>Sodbust(Y/N)</u>	<u>Acres</u>	<u>Determination Date</u>
2	Y	N	14.3	5/1/1989
5	Y	N	2.3	5/1/1989
8	N	N	34.3	5/1/1989
9	Y	N	72.6	5/1/1989
10	Y	N	10.1	5/1/1989
12	Y	N	9.2	5/1/1989
16	Y	N	7.2	5/1/1989
17	Y	N	5.8	5/1/1989
18	Y	N	0.5	5/1/1989
19	Y	N	1.1	5/1/1989
20	Y	N	2.3	5/1/1989
21	N	N	184.3	5/1/1989
22	N	N	3.4	5/1/1989
23	Y	N	3.9	5/1/1989
24	Y	N	3.4	5/1/1989
51	Y	Y	64.1	8/19/2014

The Highly Erodible Land determination was completed in the office.

Section II - Wetlands

Are there hydric soils on this farm?	Y
--------------------------------------	---

<u>Field(s)</u>	<u>Wetland Label*</u>	<u>Occurrence Year (CW)**</u>	<u>Acres</u>	<u>Determination Date</u>	<u>Certification Date</u>

The wetland determination was completed in the field. It was mailed to the person on .

Remarks: This replaces previously dated 026e.

I certify that the above determinations are correct and were conducted in accordance with policies and procedures contained in the National Food Security Act Manual.

Signature Designated Conservationist <i>James Sanborn acting DE for Adams & Taylor Counties</i>	Date 08/19/14
--	------------------

The U.S. Department of Agriculture (USDA) prohibits discrimination in all its programs and activities on the basis of race, color, national origin, gender, religion, age, disability, political beliefs, sexual orientation, and marital or family status. (Not all prohibited bases apply to all programs.) Persons with disabilities who require alternative means for communication of program information (Braille, large print, audiotape, etc.) should contact USDA's TARGET Center at 202-720-2600 (voice and TDD).

To file a complaint of discrimination, write USDA, Director, Office of Civil Rights, Room 326W, Whitten Building, 14th and Independence

*DEFINITIONS OF WETLAND LABELS

AW	<u>Artificial Wetland</u> : An area that was formerly a non-wetland area under natural conditions but now exhibits wetland characteristics because of the influence of human activities. These areas are exempt from the Food Security Act of 1985, as amended. This label includes irrigation induced wetlands.
CC	<u>Commenced Conversion</u> : A wetland, farmed wetland, farmed wetland pasture, or converted wetland on which the conversion began but was not completed before December 23, 1985, was approved by FSA to continue, and the conversion was completed by January 1, 1995.
CPD	<u>COE Permit with Mitigation</u> : A converted wetland authorized by a permit issued under Section 404 of the Clean Water Act. Production of agricultural commodities is allowed subject to conditions of the permit.
CMW	<u>Categorical Minimal Effect</u> : A wetland that meets specific categories of conversion activities that have been determined by NRCS to have minimal effect, individually and cumulatively, on the functions and values of the wetland and the wetlands in the watershed.
CW	<u>Converted Wetland</u> : A wetland converted between December 23, 1985, and November 28, 1990. Production of an agricultural commodity or additional manipulation of these areas will yield USDA benefit ineligibility. Also, these areas are wetlands converted after December 23, 1985, by a county, drainage district, or similar entity. For these instances, production of an agricultural commodity or forage for mechanical harvest or additional manipulation will cause ineligibility for USDA program benefits.
CW+year	<u>Converted Wetland + (year the conversion occurred)</u> : A wetland converted after November 28, 1990, where the USDA program participant is ineligible for benefits until the wetland is restored or mitigated unless an exemption applies.
CWNA	<u>Converted Wetland Non-Agricultural Use</u> : A wetland converted after November 28, 1990, to a use other than agricultural commodity production. Label not used for certified wetland determinations completed after 2/2008.
CWTE	<u>Converted Wetland Technical Error</u> : A wetland converted or commenced after December 23, 1985, based on an incorrect NRCS determination. This label does not apply to obvious wetlands as defined in the National Food Security Act Manual.
FW	<u>Farmed Wetland</u> : A wetland that was manipulated and planted before December 23, 1985, but still meets inundation or saturation criteria. These areas may be farmed and maintained as documented before December 23, 1985, as long as they are not abandoned (i.e., management or maintenance for commodity production ceased for 5 consecutive years).
FWP	<u>Farmed Wetland Pasture or Hayland</u> : A wetland that is used for pasture or haying, was manipulated and planted before December 23, 1985, but still meets the inundation or saturation criteria. These areas may be farmed and maintained as documented before December 23, 1985, as long as they are not abandoned (i.e., management or maintenance for commodity production ceased for 5 consecutive years).
MIW	<u>Mitigation Exemption</u> : A converted wetland, farmed wetland or farmed wetland pasture of which the acreage, functions and values lost have been compensated for through an NRCS-approved mitigation plan.
MW	<u>Minimal Effect Exemption</u> : A converted wetland that is exempt from the wetland conservation provisions of the Food Security Act of 1985, as amended, based on an NRCS determination that the conversion has or will have a minimal effect, individually and cumulatively, on the functions and values of the wetland and the wetlands in the watershed.
MWM	<u>Mitigation Site</u> : The site of wetland restoration, enhancement, or creation serving as mitigation for the mitigation exemption (MIW) site.
NI	<u>Not Inventoried</u> : An area where no wetland determination has been conducted. Label not used for certified wetland determinations completed after 2/2008.
NW	<u>Non-Wetland</u> : An area that does not contain a wetland. Also includes wetlands converted before December 23, 1985, but a commodity crop was not produced and the area does not meet wetland criteria (not been abandoned).
PC	<u>Prior-Converted Cropland</u> : A wetland converted to cropland before December 23, 1985, and as of December 23, 1985, was capable of being cropped and did not meet farmed wetland hydrology criteria. These areas are not subject to the wetland conservation provisions of the Food Security Act of 1985, as amended, unless further drainage manipulation affects adjacent wetlands.
PC/NW	<u>Prior Converted Cropland/Non-Wetland</u> : An area that contains both PC and NW.
TP	<u>Third-Party Exemption</u> : A wetland converted after December 23, 1985, by a third party who is not associated with the participant, and the conversion is not a result of a scheme or device. A third party does not include predecessors in interest on the tract, drainage districts, or other local government entities.
W	<u>Wetland</u> : An area meeting wetland criteria that was not converted after December 23, 1985. These areas include farmed wetlands and farmed wetland pasture that have been abandoned.
WX	<u>Manipulated Wetlands</u> : A wetland manipulated after December 23, 1985, but the manipulation was not for the purpose of making production possible and production was not made possible. These areas include wetlands manipulated by drainage maintenance agreements.

The U.S. Department of Agriculture (USDA) prohibits discrimination in all its programs and activities on the basis of race, color, national origin, gender, religion, age, disability, political beliefs, sexual orientation, and marital or family status. (Not all prohibited bases apply to all programs.) Persons with disabilities who require alternative means for communication of program information (Braille, large print, audiotape, etc.) should contact USDA's TARGET Center at 202-720-2600 (voice and TDD). To file a complaint of discrimination, write USDA, Assistant Secretary for Civil Rights, 1400 Independence Avenue, S.W., Stop 9410, Washington, DC 20250-9410, or call toll-free at (866) 632-9992 (English) or (800) 877-8339 (TDD) or (866) 377-8642 (English Federal-relay) or (800) 845-6136 (Spanish Federal-relay). USDA is an equal opportunity provider and employer.



Natural Resources Conservation Service
2243 Loomis Ave Ste 2
Coming IA 50841-8008
641-322-3116

August 16, 2010

Laton & Wilma Goodson
2141 Soldier RD
Fort Scott, KS 66701

Dear Mr. and Mrs. Goodson,

The Food Security Act of 1985, as amended, requires persons to be using an approved conservation system to produce agricultural commodities on highly erodible land (HEL) in order to be eligible for U.S. Department of Agriculture (USDA) benefits.

On, June 15, 2010, a status review was completed for tract 2360, located in sections 7, 8, & 18 of Carl Township, T73N-R33W, and section 12 of Washington Township, T73N-R34W, in Adams County, Iowa. The conservation plan is not being followed on this tract. Due to the fact that this tract has a history of hay in rotation I am granting a variance for this crop year. Since hay was included in the rotation in the past, the current soil losses are minimally acceptable. In the future, utilizing a corn/soybean rotation on this tract, with the current tillage system, will not be acceptable. The granting of this variance is contingent upon your signing a revised conservation plan. You should contact this office as soon as possible to accomplish this. The plan will outline the items that will need to be **corrected prior to planting the 2011 crop.**

Because this temporary variance is granted for this crop year, this tract will be reviewed again in 2011. If corrective measures are not completed before planting the crop in 2011, I will then notify the Farm Service Agency (FSA) that an acceptable conservation system is not being used on this tract.

If this happens, FSA may determine that you are ineligible for certain USDA program benefits such as: Commodity Loans, Production Adjustment Program (Wheat and Feed Grain Programs), Disaster Programs (livestock fee, failed crops, etc.), Conservation Reserve Program (CRP), Rural Development and other USDA programs.

Respectfully,


A handwritten signature in black ink, appearing to read "Doug Davenport".

Doug Davenport,
District Conservationist



Natural Resources Conservation Service
2243 Loomis Ave Ste 2
Corning IA 50841-8008
641-322-3116

August 16, 2010



The Food Security Act of 1985, as amended, requires persons to be using an approved conservation system to produce agricultural commodities on highly erodible land (HEL) in order to be eligible for U.S. Department of Agriculture (USDA) benefits.

On, June 15, 2010, a status review was completed for tract 2360, located in sections 7, 8, & 18 of Carl Township, T73N-R33W, and section 12 of Washington Township, T73N-R34W, in Adams County, Iowa. The conservation plan is not being followed on this tract. Due to the fact that this tract has a history of hay in rotation I am granting a variance for this crop year. Since hay was included in the rotation in the past, the current soil losses are minimally acceptable. In the future, utilizing a corn/soybean rotation on this tract, with the current tillage system, will not be acceptable. The granting of this variance is contingent upon your signing a revised conservation plan. You should contact this office as soon as possible to accomplish this. The plan will outline the items that will need to be corrected prior to planting the 2011 crop.

Because this temporary variance is granted for this crop year, this tract will be reviewed again in 2011. If corrective measures are not completed before planting the crop in 2011, I will then notify the Farm Service Agency (FSA) that an acceptable conservation system is not being used on this tract.

If this happens, FSA may determine that you are ineligible for certain USDA program benefits such as: Commodity Loans, Production Adjustment Program (Wheat and Feed Grain Programs), Disaster Programs (livestock fee, failed crops, etc.), Conservation Reserve Program (CRP), Rural Development and other USDA programs.

Respectfully,

A handwritten signature in black ink, appearing to read "Doug Davenport".

Doug Davenport,
District Conservationist

HIGHLY ERODIBLE LAND AND WETLAND CONSERVATION DETERMINATION

1. NAME AND ADDRESS OF PRODUCER
Katon Goodson

2. DATE OF REQUEST
3-1-88

3. NAME OF USDA AGENCY OR PRODUCER REQUESTING DETERMINATION

ASCS

4. FARM NO. AND TRACT NO. (S)

510 7831 8360

5. COUNTY
Adams

SECTION I - HIGHLY ERODIBLE LAND

6. Is a soil survey now available for making a highly erodible land determination?

YES

7. Are there highly erodible soil map units on this farm?

YES

8. a. List highly erodible tract and fields that, according to ASCS records, were used to produce an agricultural commodity in any crop year during 1981-1985.

7831 2,446,7910

217.2

b. Is an approved conservation plan being actively applied on all of these fields? If "no," list the tract and fields (from the ASCS records) on which a plan is not being applied.

YES

7831 None

0

9. a. List highly erodible tract and fields that, according to ASCS records, have been or will be converted for the production of agricultural commodities, were not used for this purpose in any crop year during 1981-1985, and were not enrolled in a USDA set-aside or diversion program.

b. Is an approved conservation system being used on these fields? If "no," list the tract and fields (from the ASCS records) on which a system is not being used.

YES

10. Are there other fields or unnumbered areas that (1) have highly erodible map units, (2) were not used to produce an agricultural commodity in any crop year after 1980, and (3) were not enrolled in a USDA set-aside or diversion program in any crop year during 1981-1985?

YES

11. CERTIFICATION: The _____ (no.) conservation plan(s) was (were) approved by the _____ and conform with technical requirements of the SCS field office technical guide. Conservation systems included in the conservation plan(s) applied _____ (no.).

SECTION II - WETLAND

12. Are hydric soils on this farm? If "yes," list tract and fields (from the ASCS records) or unnumbered areas (un) in which they occur.

YES

7831

1,368 9 10

13. Do fields that were or will be used to produce an agricultural commodity contain wetland? If "yes," list tract and fields, outline the wetland areas within fields on the ASCS photographs, and mark with "w" for wetland, "nw" for artificial and irrigation induced wetland, "m" for wetland on which the conversion would result in minimal effect.

Are there converted wetlands on this farm that have been converted since December 23, 1985? If "yes," list the tract and fields, outline converted wetlands on the ASCS photograph(s), and mark with "cw".

15. The wetland determination was done in the office field .

16. This determination was hand delivered mailed to the producer on *5-19-89* (DATE)

Any producer who does not agree with this determination may request reconsideration from the person making this determination. This request is a prerequisite for any further appeal. The request must be in writing and must set forth reasons for the request. The request must be mailed or delivered within 15 days after written notice of the determination is mailed to or otherwise made available to the producer.

17. REMARKS

18. SIGNATURE OF SCS DISTRICT CONSERVATIONIST

[Signature]

DATE
5/1/89

Assistance and programs of the Soil Conservation Service are available without regard to race, religion, color, sex, age, handicap, or national origin.

Distribution: White--ASCS-FCIC Goldenrod--SCS copy Pink--Producer copy Yellow--FmHA

Latan Good

3. COUNTY
Adams

CERTIFICATION OF HIGHLY ERODIBLE LAND
CONSERVATION PLAN(S) AND SYSTEM(S)

CONSERVATION PLAN APPROVED

ACT NUMBER(S)	5. FIELD NUMBER(S)	6. ACRES	7. PLAN APPROVED (Date)	8. CONSERVATION SYSTEM APPLIED (Date)	9. REMARKS
831	2	16.0	7/26/89		
2360	4	4.6	7/26/89		
	5	2.5	7/26/89		
	6	29.0	7/26/89		
	7	51.1	7/26/89		
	9	105.8	7/26/89		
	10	8.2	7/26/89		

10. REMARKS

11. SIGNATURE OF SCS DISTRICT CONSERVATIONIST  12. DATE 7/26/89

Katon Goodson

3-1-88

HIGHLY ERODIBLE LAND AND WETLAND CONSERVATION DETERMINATION

3. NAME OF USDA AGENCY OR PRODUCER REQUESTING DETERMINATION

ASCS

4. FARM NO. AND TRACT NO. (S)

512 T831 2360

5. COUNTY

Adams

SECTION I - HIGHLY ERODIBLE LAND

6. Is a soil survey now available for making a highly erodible land determination?

YES

NO

FIELD NO.(S)

TOTAL ACRES

7. Are there highly erodible soil map units on this farm?

YES

NO

8. a. List highly erodible tract and fields that, according to ASCS records, were used to produce an agricultural commodity in any crop year during 1981-1985.

TRACT NO.	7831	2456, 7910	217.2
-----------	------	------------	-------

0

b. Is an approved conservation plan being actively applied on all of these fields? If "no," list the tract and fields (from the ASCS records) on which a plan is not being applied.

TRACT NO.	7831	None	
-----------	------	------	--

0

9. a. List highly erodible tract and fields that, according to ASCS records, have been or will be converted for the production of agricultural commodities, were not used for this purpose in any crop year during 1981-1985, and were not enrolled in a USDA set-aside or diversion program.

YES

NO

b. Is an approved conservation system being used on these fields? If "no," list the tract and fields (from the ASCS records) on which a system is not being used.

YES

NO

10. Are there other fields or unnumbered areas that (1) have highly erodible map units, (2) were not used to produce an agricultural commodity in any crop year after 1980, and (3) were not enrolled in a USDA set-aside or diversion program in any crop year during 1981-1985?

YES

NO

11. CERTIFICATION: The _____ (no.) conservation plan(s) was (were) approved by the _____ (no.), and conform with technical requirements of the SCS field office technical guide. Conservation systems included in the conservation plan(s) applied _____ (no.).

SECTION II - WETLAND

12. Are hydric soils on this farm? If "yes," list tract and fields (from the ASCS records) or unnumbered areas (un) in which they occur.

YES

NO

13. Do fields that were or will be used to produce an agricultural commodity contain wetland? If "yes," list tract and fields, outline the wetland areas within fields on the ASCS photograph(s), and mark with "w" for wetland; "aw" for artificial, and irrigation induced wetland; "mw" for wetland on which the conversion would result in minimal effect.

YES

NO

14. Are there converted wetlands on this farm that have been converted since December 23, 1985? If "yes," list the tract and fields, outline converted wetlands on the ASCS photograph(s), and mark with "cw."

YES

NO

15. The wetland determination was done in the office field .

16. This determination was hand delivered mailed to the producer on 5-19-89 (DATE)

17. Any producer who does not agree with this determination may request reconsideration from the person making this determination. This request is a prerequisite for any further appeal. The request must be in writing and must set forth reasons for the request. The request must be mailed or delivered within 15 days after written notice of the determination is mailed to or otherwise made available to the producer.

18. REMARKS

18. SIGNATURE OF SCS DISTRICT CONSERVATIONIST

DATE

5/1/89

Latona Goodson

512

**CERTIFICATION OF HIGHLY ERODIBLE LAND
CONSERVATION PLAN(S) AND SYSTEM(S)**

Adams

CONSERVATION PLAN APPROVED

4. TRACT NUMBER(S)	5. FIELD NUMBER(S)	6. ACRES	7. PLAN APPROVED (Date)	8. CONSERVATION SYSTEM APPLIED (Date)	9. REMARKS
T 831	2	16.0	4/26/89		
2360	4	4.6	4/26/89		
	5	2.5	4/26/89		
	6	29.0	4/26/89		
	7	51.1	4/26/89		
	9	165.8	4/26/89		
	10	8.2	4/26/89		

10. REMARKS

11. SIGNATURE OF SCS DISTRICT CONSERVATIONIST

[Signature]

12. DATE

3/1/89



512
7831

8
NHEL

NHEL

2
160 HET

4
247 NHEL

13
H1

9
NHEL

11
AEL

1266

5
128 HET

NHEL

12
NHEL

8
17

8
17

8
17

8
17

8
17

8
17

8
17