

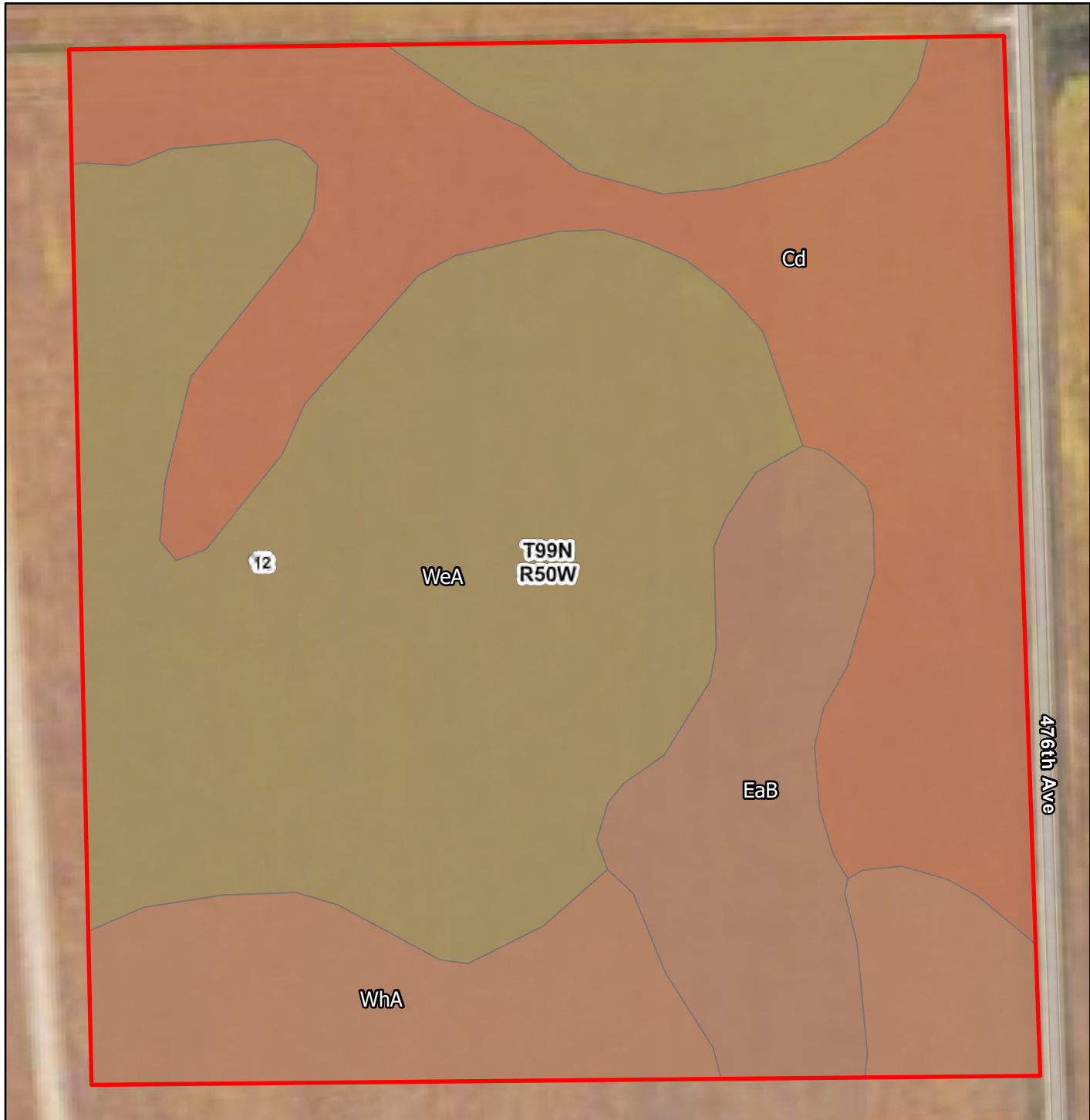
Farm #
Gerianne M. Short
Lincoln County, South Dakota

Latitude: 43.4276°N
Longitude: 96.7044°W
Imagery Source: USDA NAIP
Soil Data Source: USDA NRCS
Boundaries are Approximate



Farm #
Gerianne M. Short
Lincoln County, South Dakota

Latitude: 43.4078°N
Longitude: 96.6901°W
Imagery Source: USDA NAIP
Soil Data Source: USDA NRCS
Boundaries are Approximate

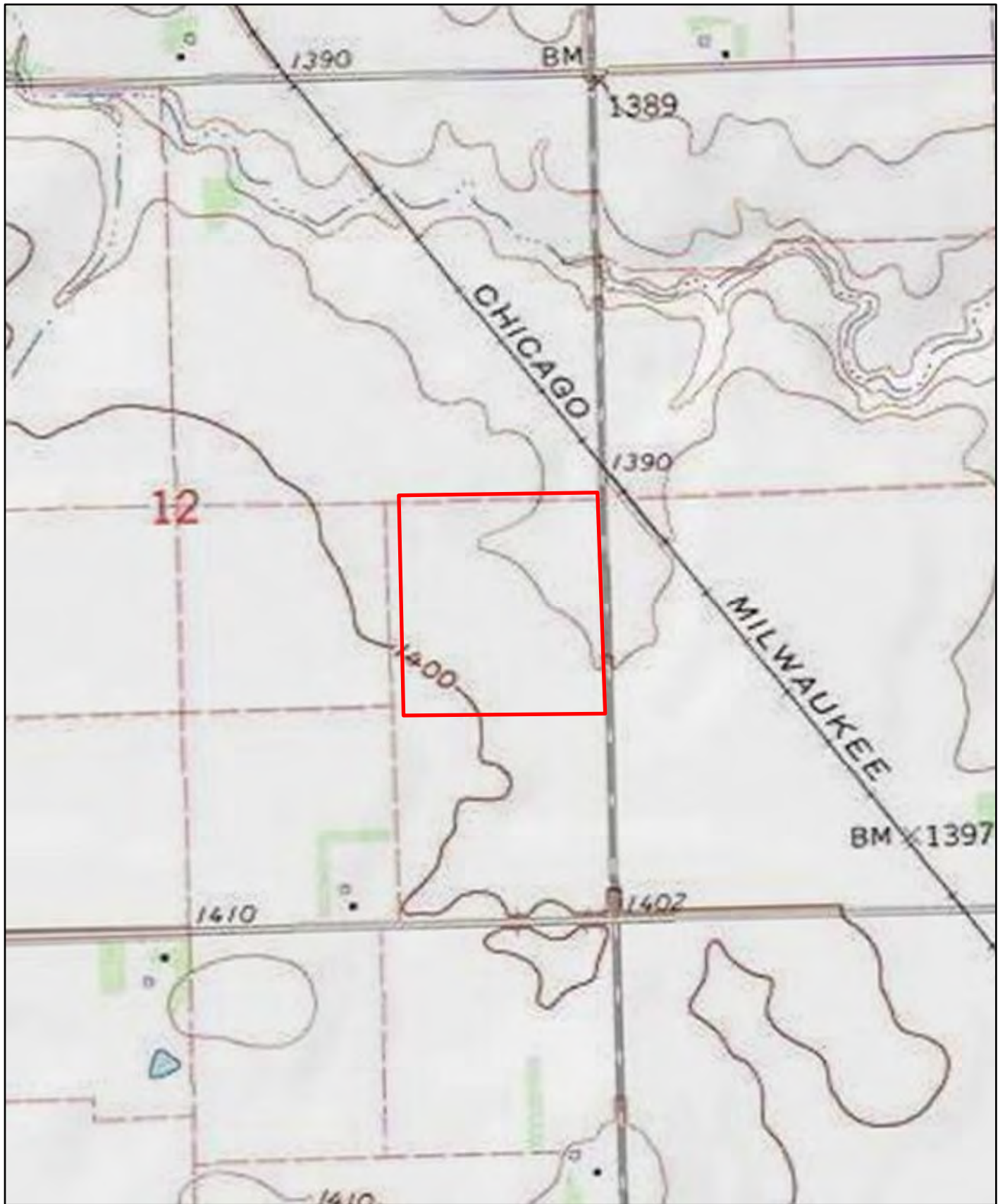


Map Symbol	Name	Non-IRR LCC	PI	ACRES
WeA	Wentworth silty clay loam, 0 to 2 percent slopes	1	93	18.3
Cd	Chancellor-Viborg silty clay loams	2w	87	11.1
WhA	Wentworth-Chancellor silty clay loams, 0 to 2 percent slopes	1	88	5.2
EaB	Egan silty clay loam, 3 to 6 percent slopes	2e	82	4.1
TOTAL			89.4	38.7



Farm #
Gerianne M. Short
Lincoln County, South Dakota

Latitude: 43.4078°N
 Longitude: 96.6901°W
 Imagery Source: USDA NAIP
 Soil Data Source: USDA NRCS
 Boundaries are Approximate



Farm #
Gerianne M. Short
Lincoln County, South Dakota

Latitude: 43.4078°N
Longitude: 96.6901°W
Imagery Source: USDA NAIP
Soil Data Source: USDA NRCS
Boundaries are Approximate