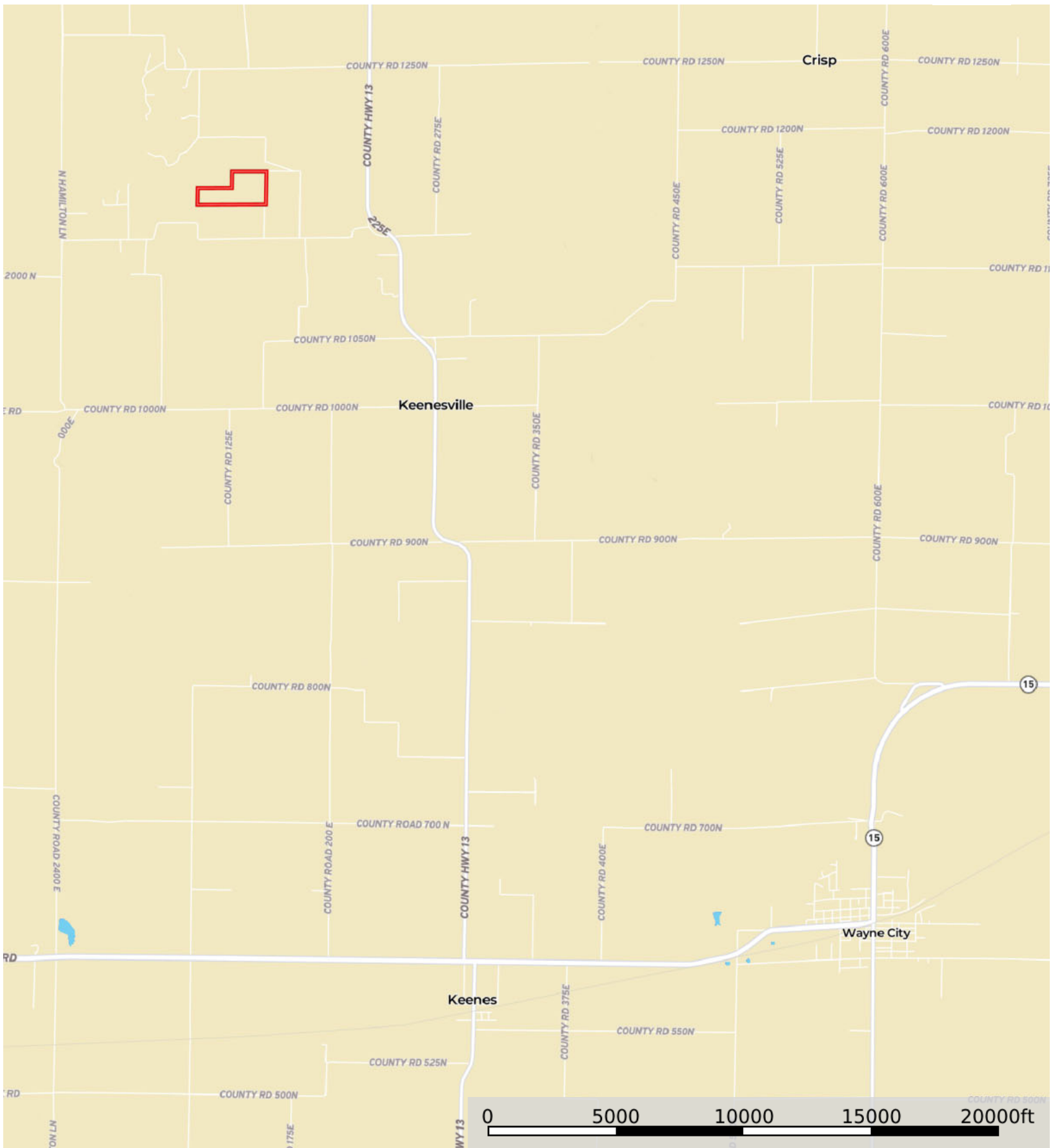

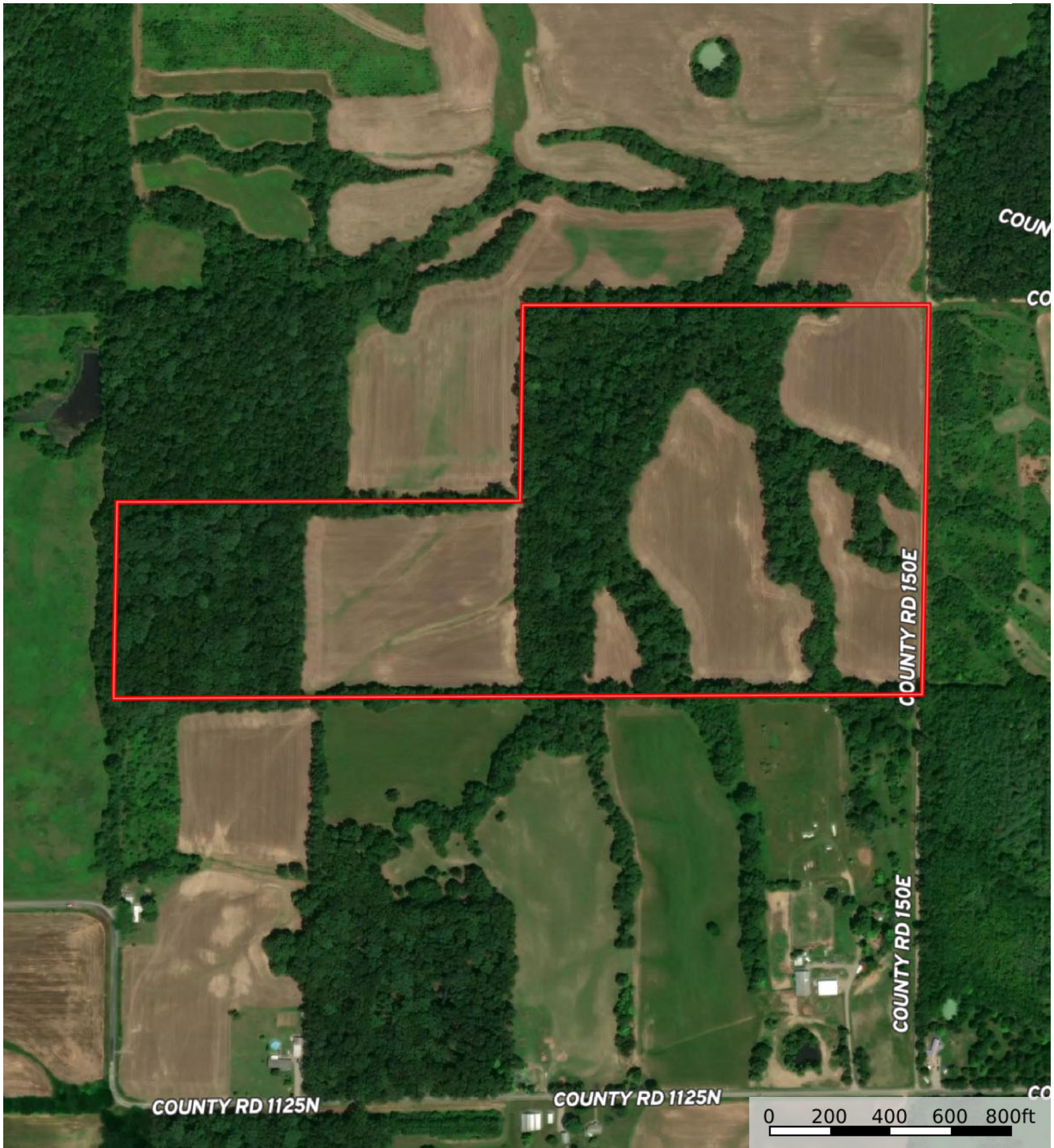



Gibson - Wayne Farms LLC

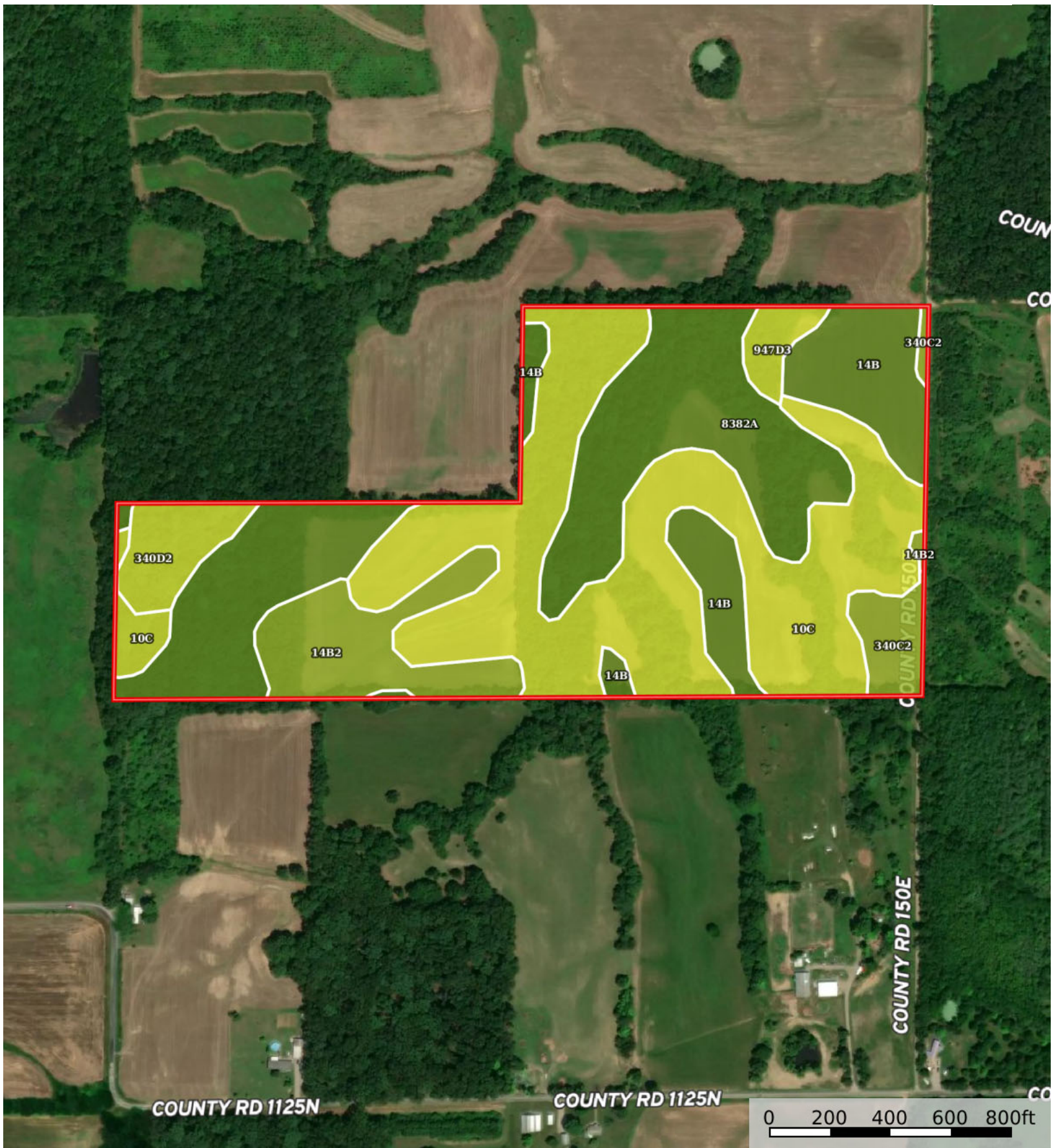
Wayne County, Illinois, 60 AC +/-




 Boundary



 Boundary



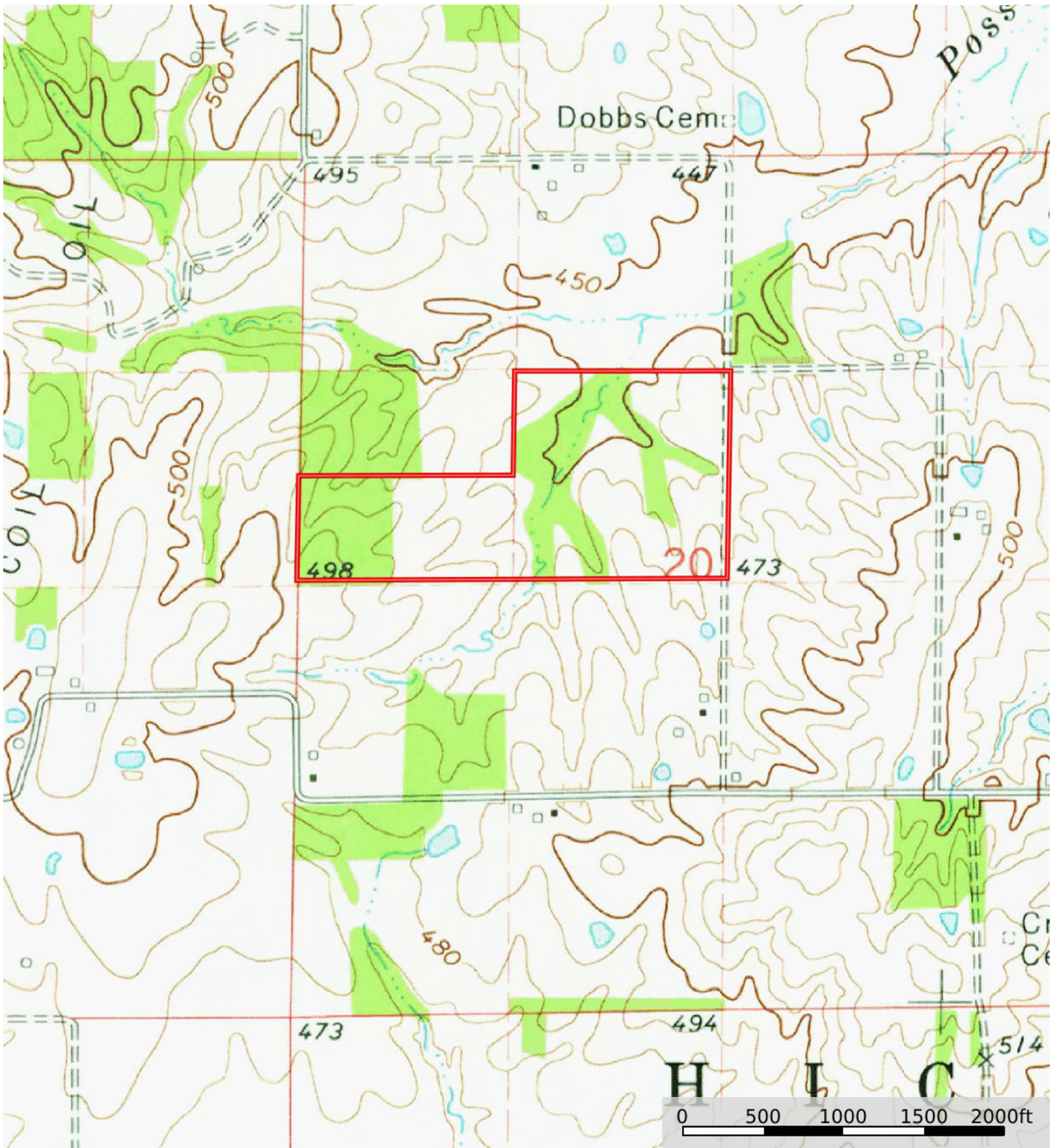
 Boundary


|  Boundary 60.16 ac

| SOIL CODE | SOIL DESCRIPTION | ACRES | % | PI | NCCPI | CAP |
|-----------|---|----------|-------|-------|-------|------|
| 10C | Plumfield silty clay loam, 5 to 10 percent slopes | 25.09 | 41.72 | 60 | 23 | 4e |
| 14B | Ava silt loam, 2 to 5 percent slopes | 13.83 | 23.0 | 99 | 64 | 2e |
| 8382A | Belknap silt loam, 0 to 2 percent slopes, occasionally flooded | 10.41 | 17.31 | 117 | 78 | 2w |
| 14B2 | Ava silt loam, 2 to 5 percent slopes, eroded | 5.46 | 9.08 | 93 | 50 | 3s |
| 340D2 | Zanesville silt loam, till plain, 10 to 18 percent slopes, eroded | 2.35 | 3.91 | 77 | 44 | 4e |
| 340C2 | Zanesville silt loam, till plain, 5 to 10 percent slopes, eroded | 1.89 | 3.14 | 84 | 46 | 3e |
| 947D3 | Hickory-Passport clay loams, 10 to 18 percent slopes, severely eroded | 1.13 | 1.88 | 69 | 55 | 4e |
| TOTALS | | 60.16(*) | 100% | 83.44 | 46.55 | 3.07 |

(*) Total acres may differ in the second decimal compared to the sum of each acreage soil. This is due to a round error because we only show the acres of each soil with two decimal.





 Boundary