



TRG Tract Report: HARRISON

Scott Hillard; American Forest Management

28 April, 2025

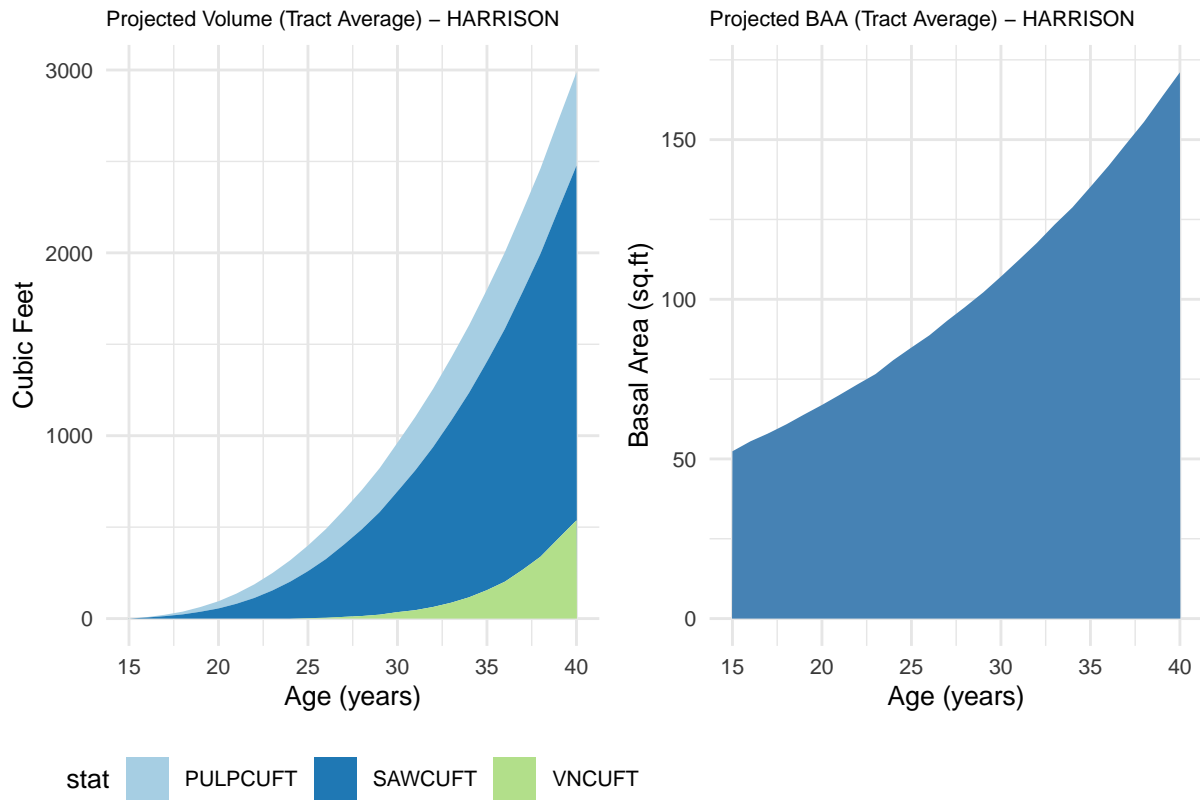
- All volume information (VNCUFT,PULPCUFT,SAWCUFT) represent projections based on inventory. These are for informational purposes. Actual volumes may vary from projections, likewise AFM cannot guarantee projections. Projections include silvicultural treatments, such as thinning. There are four stands Tank-9, Goode-4, Hansen-3, and Preuss-6 which were experimental plantings of white oak, or oak and walnut mixed. These were excluded from the analysis within those tracts. Overall they represent a total of approximately 42 acres.

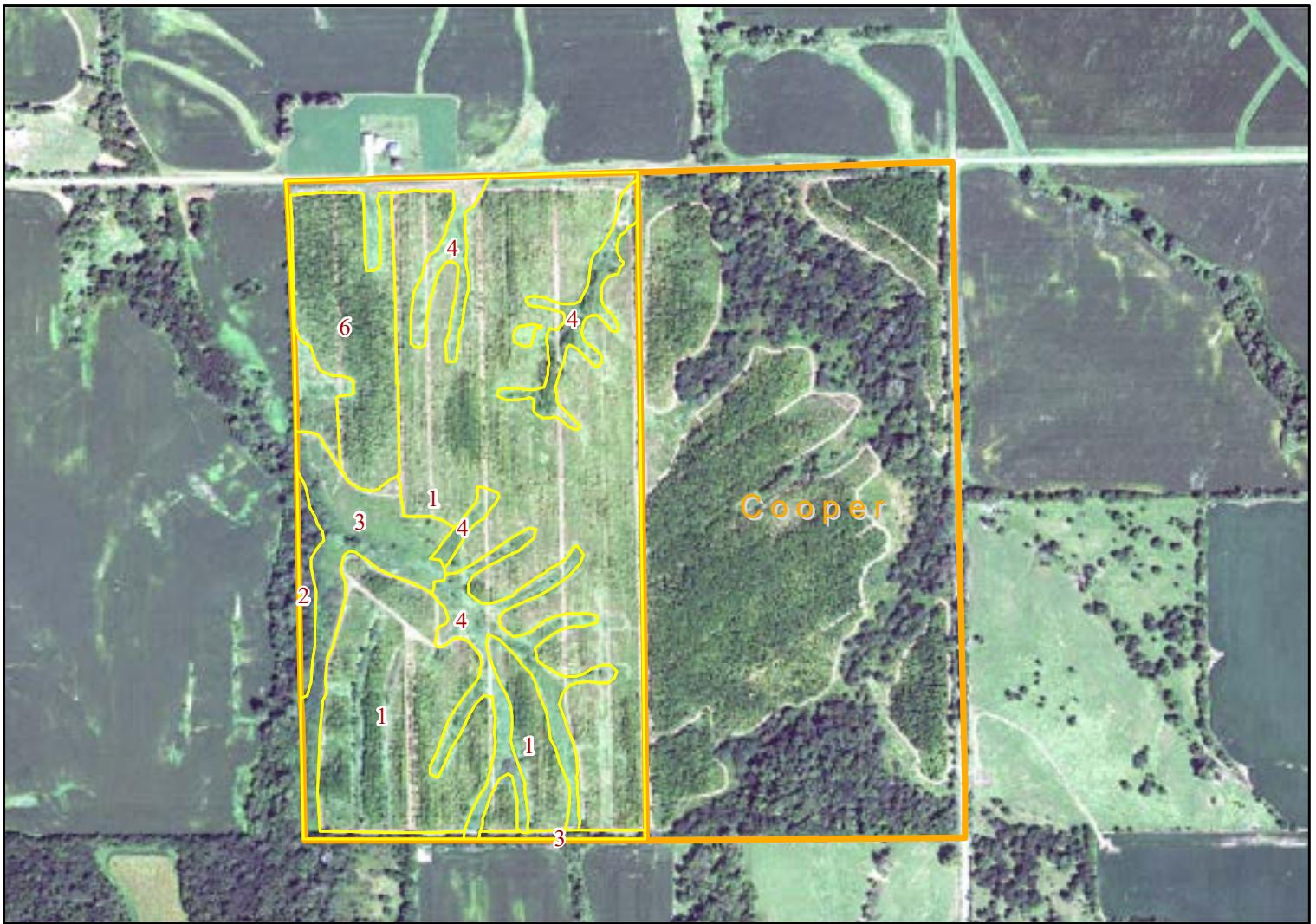
Table 1: Est. Current Stand Inventory for (Productive Area-Walnut Stands Only); HARRISON

Stand	GIS.Area	Current_Age	DBH	BAPA	TPA	TH	SAWCUFT	PULPCUFT
1	54.35	15	3.8	20.0	242	23.0	0	0
6	8.20	15	4.7	29.9	240	33.2	0	0

Table 2: Weighted Tract Average (Productive Area-Walnut Stands Only)

GIS_Area_Productive	GIS_Area_Total	Avg_DBH	Avg_BA	Avg_TPA	Avg_HT	Avg_SAWCUFT	Avg_PULPCUFT
62.5	82.6	3.9	21.3	241.3	24.3	0	0





Tract Name	Stand	State	County	Acres	Origin	Dom Species	Year Est
HARRISON	TRGBW006-209-1	Illinois	Mercer	54.35	Planted	Walnut	2009
HARRISON	TRGBW006-209-2	Illinois	Mercer	1.15	Natural	Hardwood	0
HARRISON	TRGBW006-209-3	Illinois	Mercer	7.08	Open	Undefined	0
HARRISON	TRGBW006-209-4	Illinois	Mercer	11.85	Open	Undefined	0
HARRISON	TRGBW006-209-6	Illinois	Mercer	8.20	Planted	Walnut	2009
				82.63			

HARRISON



1 inch = 660 feet

1/27/2025 mgm

