

Sec. 22

Sec. 23

H18

Franklin Ave

T73N R07W

Sec. 27

Sec. 26



Hackett-Doherty  
Henry Co., IA

Latitude: 41.1016°N  
Longitude: -91.6422°W  
Imagery Source: USDA NAIP  
Soil Data Source: USDA NRCS  
Boundaries Are Approximate

Sec. 22

Sec. 23

H18

Franklin Ave

T73N R07W

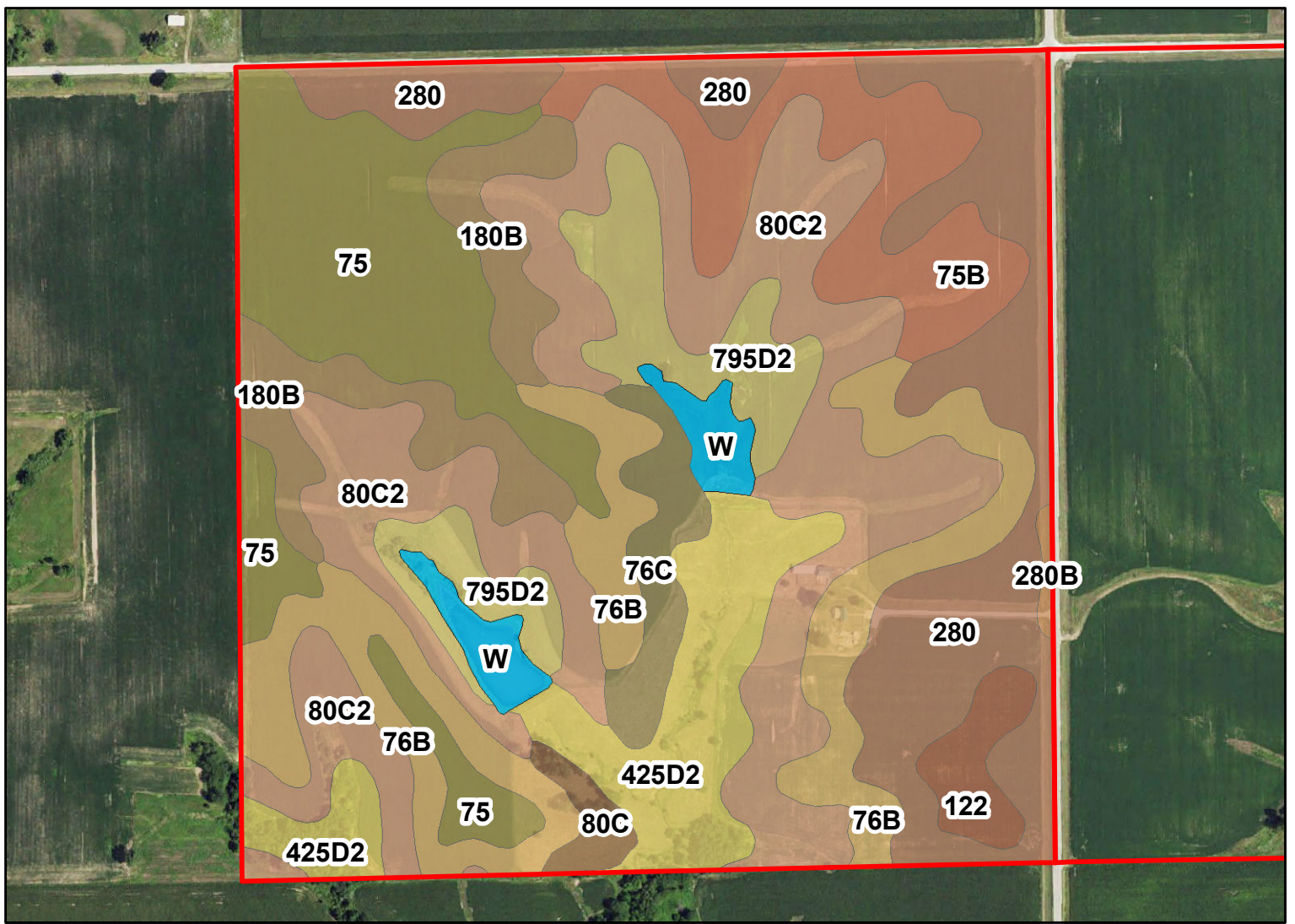
Sec. 27

Sec. 26



**Hackett-Doherty  
Henry Co., IA**

Latitude: 41.1016°N  
Longitude: -91.6446°W  
Imagery Source: USDA NAIP  
Soil Data Source: USDA NRCS  
Boundaries Are Approximate

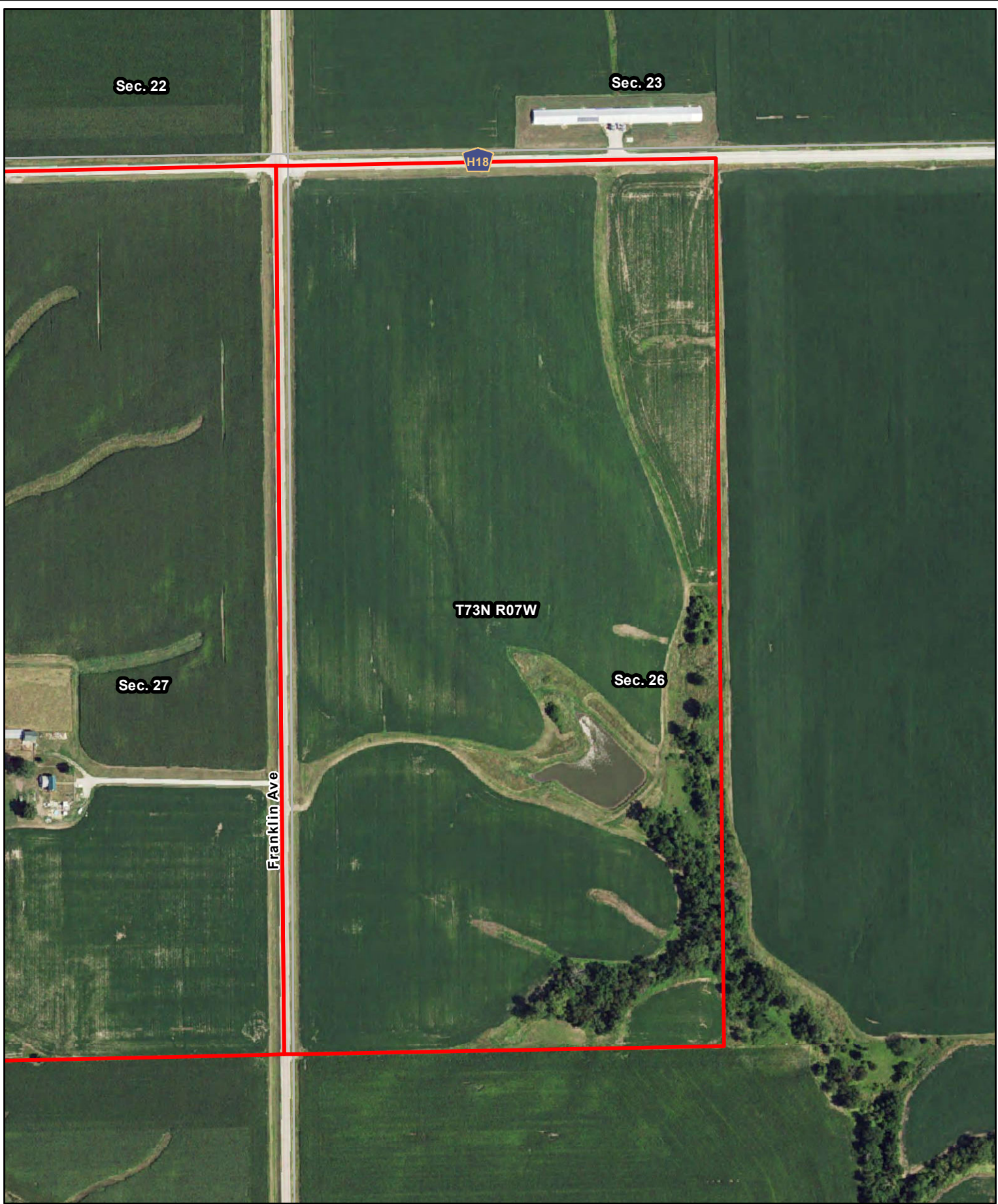


MAP		NON IRR			
SYMBOL	NAME	LCC	CSR1	CSR2	ACRES
80C2	Clinton silt loam, 5 to 9 percent slopes, eroded	IIIe	60	69	37.3
280	Mahaska silty clay loam, 0 to 2 percent slopes	Iw	95	94	25.1
75	Givin silt loam, 0 to 2 percent slopes	Ie	85	84	21.3
76B	Ladoga silt loam, 2 to 5 percent slopes	Ile	85	86	19.6
425D2	Keswick loam, 9 to 14 percent slopes, moderately eroded	IVe	12	9	13.3
75B	Givin silt loam, 2 to 5 percent slopes	Ile	81	81	12.5
795D2	Ashgrove silty clay loam, 9 to 14 percent slopes, moderately eroded	IVe	8	7	10.4
180B	Keomah silt loam, 2 to 5 percent slopes	Ile	73	76	9.9
76C	Ladoga silt loam, 5 to 9 percent slopes	IIIe	70	79	4.3
W	Water	---	---	---	3.6
122	Sperry silt loam, depressional, 0 to 1 percent slopes	IIIw	63	36	2.9
80C	Clinton silt loam, 5 to 9 percent slopes	IIIe	65	72	1.6
280B	Mahaska silty clay loam, 2 to 5 percent slopes	Ile	90	89	0.5
<b>TOTAL</b>			<b>66.0</b>	<b>67.6</b>	<b>162.0</b>



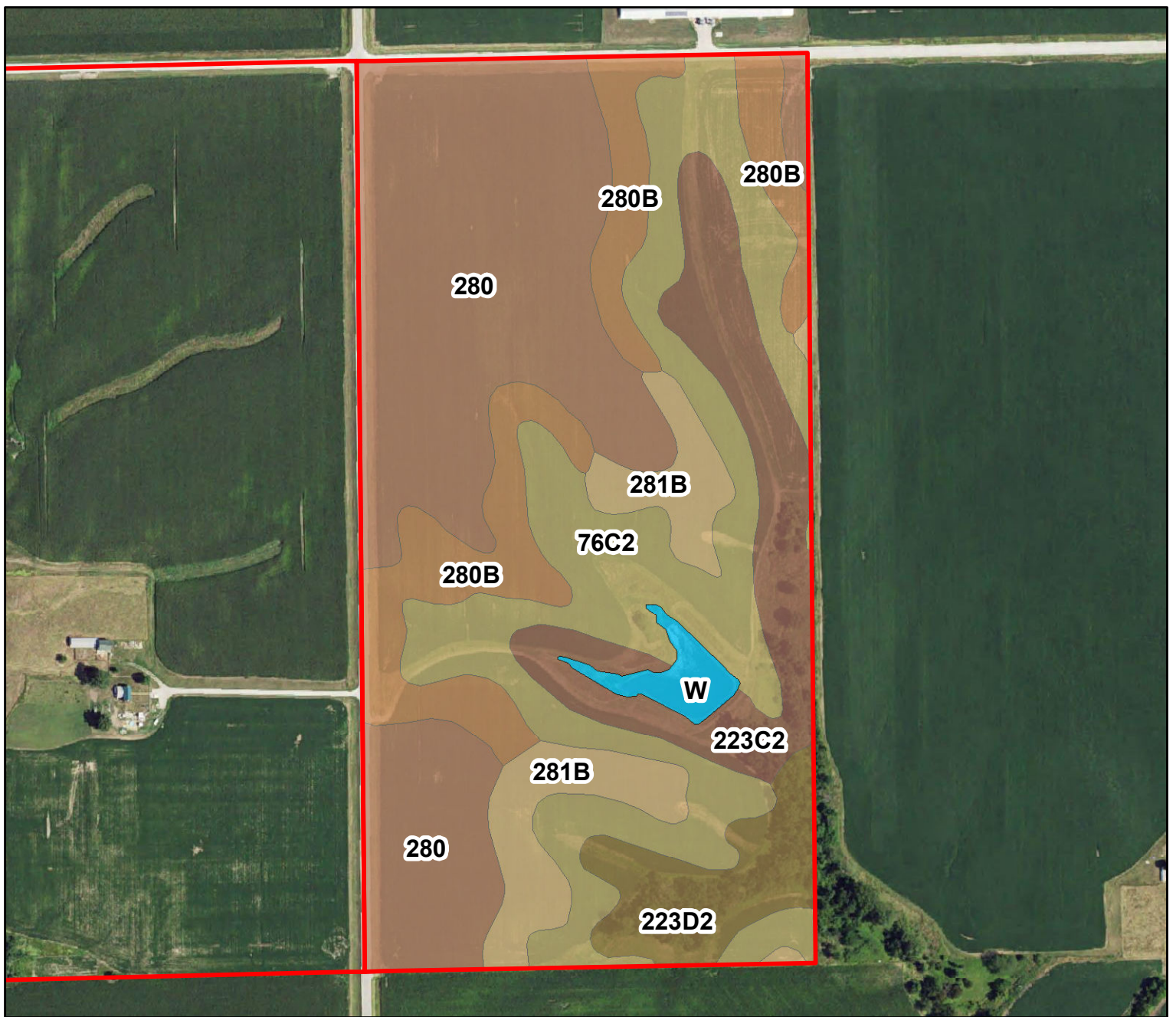
**Hackett-Doherty  
Henry Co., IA**

Latitude: 41.1016°N  
 Longitude: -91.6446°W  
 Imagery Source: USDA NAIP  
 Soil Data Source: USDA NRCS  
 Boundaries Are Approximate



**Hackett-Doherty  
Henry Co., IA**

Latitude: 41.1017°N  
Longitude: -91.6374°W  
Imagery Source: USDA NAIP  
Soil Data Source: USDA NRCS  
Boundaries Are Approximate

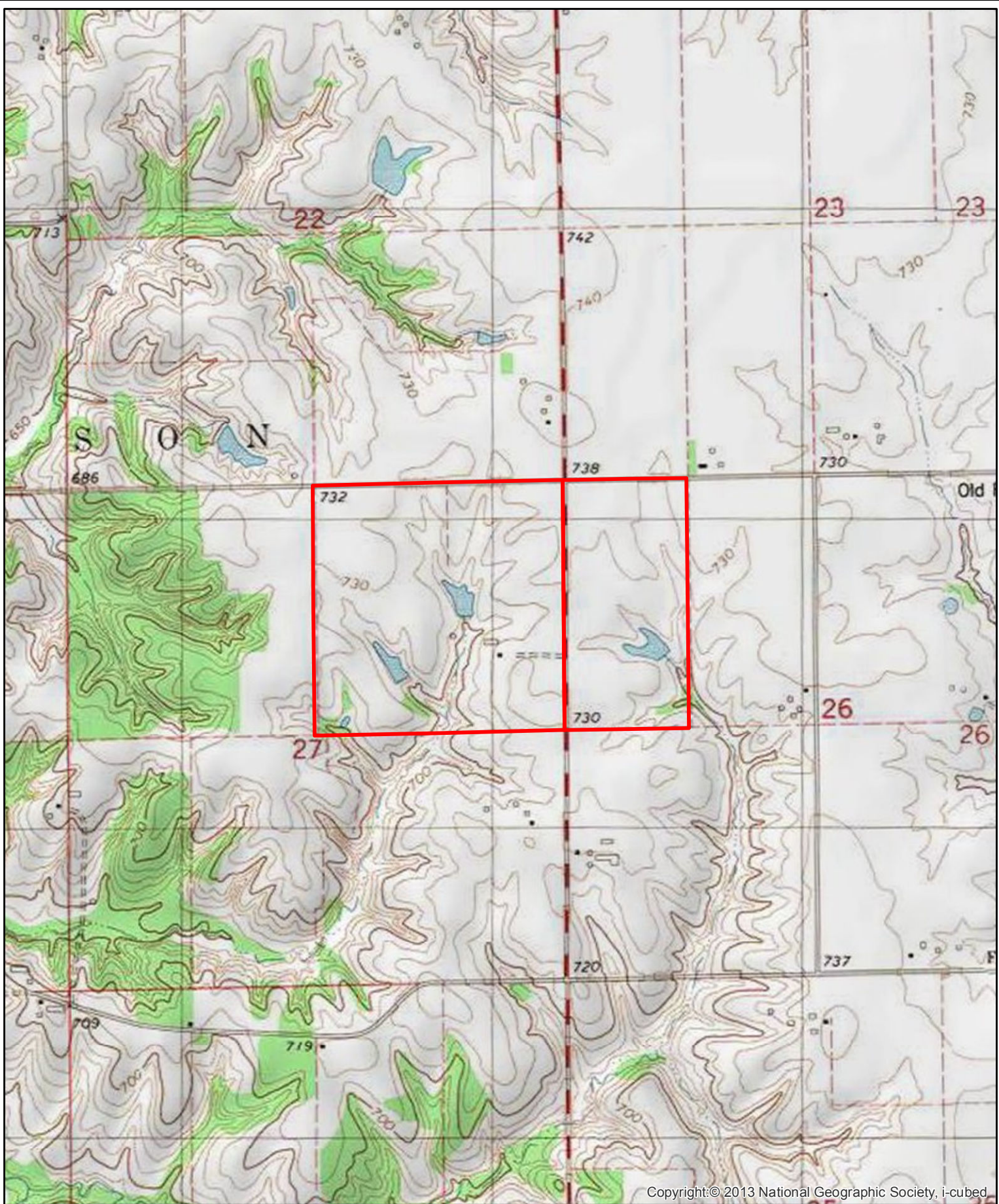


MAP SYMBOL	NAME	NON IRR			
		LCC	CSR1	CSR2	ACRES
280	Mahaska silty clay loam, 0 to 2 percent slopes	lw	95	94	27.8
76C2	Ladoga silt loam, 5 to 9 percent slopes, eroded	llle	65	75	20.0
280B	Mahaska silty clay loam, 2 to 5 percent slopes	lle	90	89	10.4
223C2	Rinda silty clay loam, 5 to 9 percent slopes, moderately eroded	lvw	22	45	9.4
281B	Otley silty clay loam, 2 to 5 percent slopes	lle	90	91	6.3
223D2	Rinda silty clay loam, 9 to 14 percent slopes, moderately eroded	lve	9	19	4.9
W	Water	---	---	---	1.3
<b>TOTAL</b>			<b>71.1</b>	<b>76.5</b>	<b>80.0</b>



**Hackett-Doherty  
Henry Co., IA**

Latitude: 41.1017°N  
 Longitude: -91.6374°W  
 Imagery Source: USDA NAIP  
 Soil Data Source: USDA NRCS  
 Boundaries Are Approximate

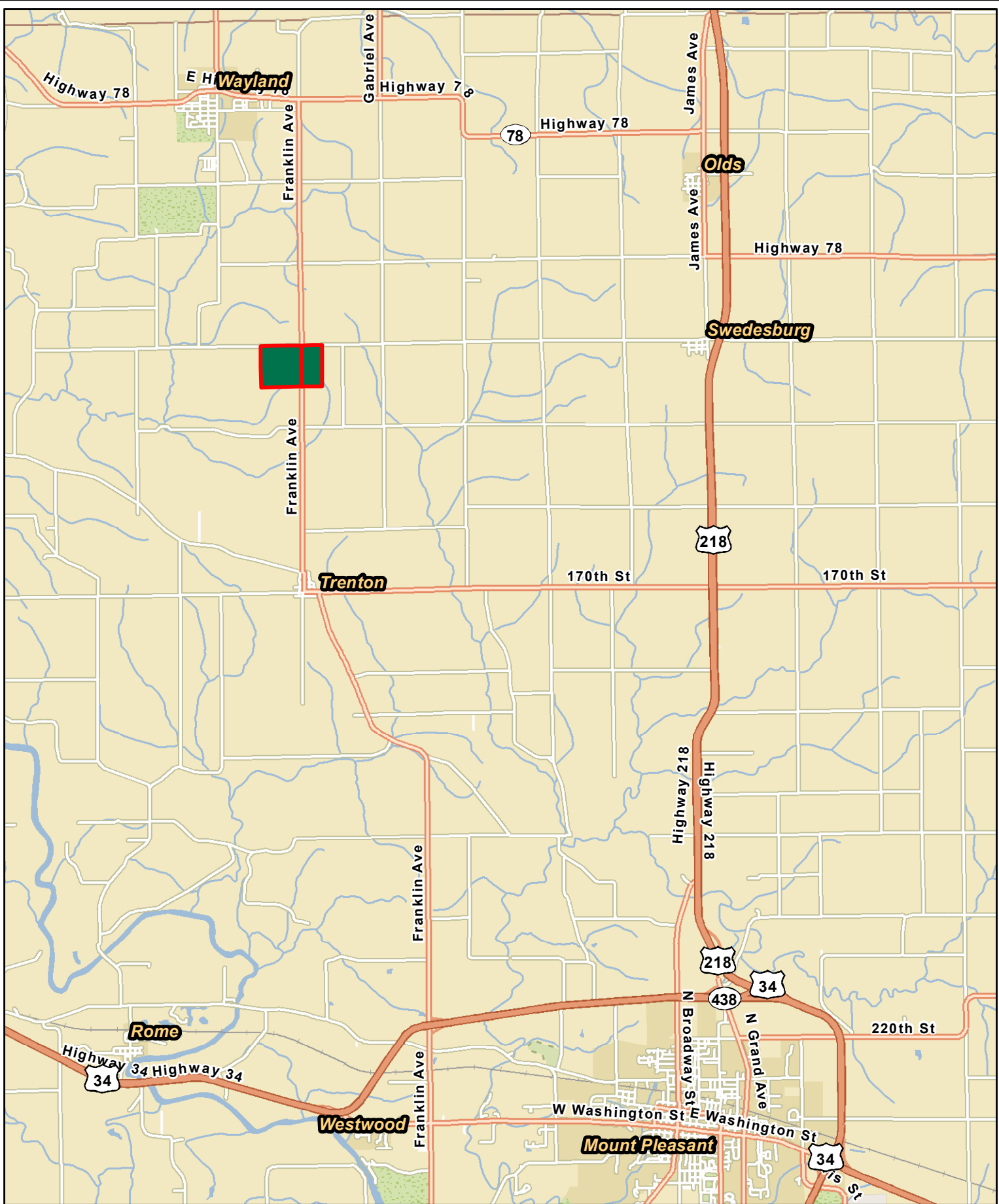


Copyright:© 2013 National Geographic Society, i-cubed



**Hackett-Doherty  
Henry Co., IA**

Latitude: 41.1016°N  
Longitude: -91.6422°W  
Imagery Source: USDA NAIP  
Soil Data Source: USDA NRCS  
Boundaries Are Approximate



Hackett-Doherty  
Henry Co., IA

Latitude: 41.0584°N  
Longitude: -91.5941°W  
Imagery Source: USDA NAIP  
Soil Data Source: USDA NRCS  
Boundaries Are Approximate