



HIGHLY ERODIBLE LAND AND WETLAND CONSERVATION DETERMINATION

Name Address:	Janice Hinde ow. C/O Farmers National-Bob Regenwether	Request Date:	8-05-08	County:	Black Hawk
Agency or Person Requesting Determination:		Tract No:	9381	FSA Farm No.:	6113

Section I - Highly Erodible Land

Is a soil survey now available for making a highly erodible land determination?	-
Are there highly erodible soil map units on this farm?	-

Fields in this section have undergone a determination of whether they are highly erodible land (HEL) or not; fields for which an HEL Determination has not been completed are not listed. In order to be eligible for USDA benefits, a person must be using an approved conservation system on all HEL.

<u>Field(s)</u>	<u>HEL(Y/N)</u>	<u>Sodbust(Y/N)</u>	<u>Acres</u>	<u>Determination Date</u>
-	-	-		
-	-	-		
-	-	-		
-	-	-		
-	-	-		

already Determined

The Highly Erodible Land determination was completed in the-Office

Section II - Wetlands

Are there hydric soils on this farm?	Yes
--------------------------------------	-----

Fields in this section have had wetland determinations completed. See the Definition of Wetland Label Codes for additional information regarding allowable activities under the wetland conservation provisions of the Food Security Act and/or when wetland determinations are necessary to determine USDA program eligibility.

<u>Field(s)</u>	<u>Wetland Label*</u>	<u>Occurrence Year (CW)**</u>	<u>Acres</u>	<u>Determination Date</u>	<u>Certification Date</u>
2	PC/NW		73.3	11-4-08	11-4-08
2	W		3.4	11-4-08	11-4-08
-	-				
-	-				
-	-				

The wetland determination was completed in the -Office It was -mailed to the person on 11-4-08.

Remarks: There are wetlands on this tract. Only non-preferated tile maybe use to go through these areas.

I certify that the above determinations are correct and were conducted in accordance with policies and procedures contained in the National Food Security Act Manual.

Signature Designated Conservationist	Date
<i>Shaffer Ridgway</i>	11-4-08

The U.S. Department of Agriculture (USDA) prohibits discrimination in all its programs and activities on the basis of race, color, national origin, gender, religion, age, disability, political beliefs, sexual orientation, and marital or family status. (Not all prohibited bases apply to all programs.) Persons with disabilities who require alternative means for communication of program information (Braille, large print, audiotope, etc.) should contact USDA's TARGET Center at 202-720-2600 (voice and TDD).

To file a complaint of discrimination, write USDA, Director, Office of Civil Rights, Room 326W, Whitten Building, 14th and Independence Avenue, SW, Washington, DC 20250-9410 or call (202) 720-5964 (voice or TDD). USDA is an equal opportunity provider and employer.

***DEFINITIONS OF WETLAND LABEL CODES**

AW	Artificial Wetland. An area that is artificial or irrigation induced wetland. These wetlands are not subject to the wetland conservation provision.
AW/FW	An area that contains both AW and FW.
AW/W	An area that contains both AW and W.
CC	Commenced Conversion exemption.
CPD	Corps Permit Decision. Corps of Engineers permit decisions regarding section 404 of the Clean Water Act will be relied upon to satisfy the wetland conservation provisions of the Food Security Act of 1985, as amended.
CMW	An area that receives a Categorical Minimal Effect determination.
CW	Converted Wetlands. An area converted between December 23, 1985 and November 28, 1990. IN any year that an agricultural commodity is planted on these converted wetlands, you will ineligible for USDA benefits.
**CW+year	An area converted after November 28, 1990. You will be ineligible for USDA program benefits until this wetland is restored.
CWNA	Converted Wetland Non-Agricultural use. A wetland area converted to other than agricultural commodity production.
CWTE	Converted Wetland Technical Error. An area converted or commenced based on an incorrect NRCS determination or misinformation from a NRCS or FSA employee.
FW	Farmed Wetland. An area that is farmed wetland; was manipulated and planted before December 23, 1985, but still meets wetland criteria. These may be farmed and maintained in the same manner as long as they are not abandoned.
FWP	Farmed Wetlands Pasture. An area that is pasture or hayland, manipulated before December 23, 1985 but still meets wetland criteria. These may be farmed and maintained in the same manner as long as they are not abandoned.
MIW	Mitigation Wetlands. Wetlands on which a person is actively mitigating a frequently cropped area or a wetland converted between December 23, 1985 and November 28, 1990. A converted wetland, farmed wetland, or farmed wetland pasture on which functions and values were lost are compensated for through wetland restoration, enhancement or creation.
MW	Minimal effect Wetland. An area determined to be minimal effect. These wetlands are to be farmed according to the minimal-effect agreement signed at the time the minimal-effect determination was made,
MWM	An area determined to be minimal effect with mitigation.
NI	Not Inventoried – No wetland determination has been completed.
NW	Non-Wetland. An area that does not contain a wetland.
NW/NAD	An area determined to be a non-wetland resulting from a decision from the National Appeals Division.
OW	Other Waters of the U.S. Area that fall under the jurisdiction of the Clean Water Act.
PC	Prior Converted cropland, which was drained filled, or manipulated before December 23, 1985; was cropped prior to December 23, 1985; was not abandoned; and does not meet FW criteria. These are not subject to the wetland conservation provision unless the area reverts to wetland as a result of abandonment.
PC/NW	An area that contains both PC and NW.
TP	Third Party Exemption.
W	Wetlands. An area meeting wetland criteria, including wetland farmed under natural conditions. If you plan to clear, drain, fill, level or manipulate these areas, contact NRCS and the Army Corp of Engineers prior to any such activity.
WX	A wetland area that has been manipulated after December 23, 1985, but was not, for the purpose of making production possible and production was not made possible. These include wetlands manipulated by drainage maintenance agreements.

Conservation Plan

Date: 11/4/2008

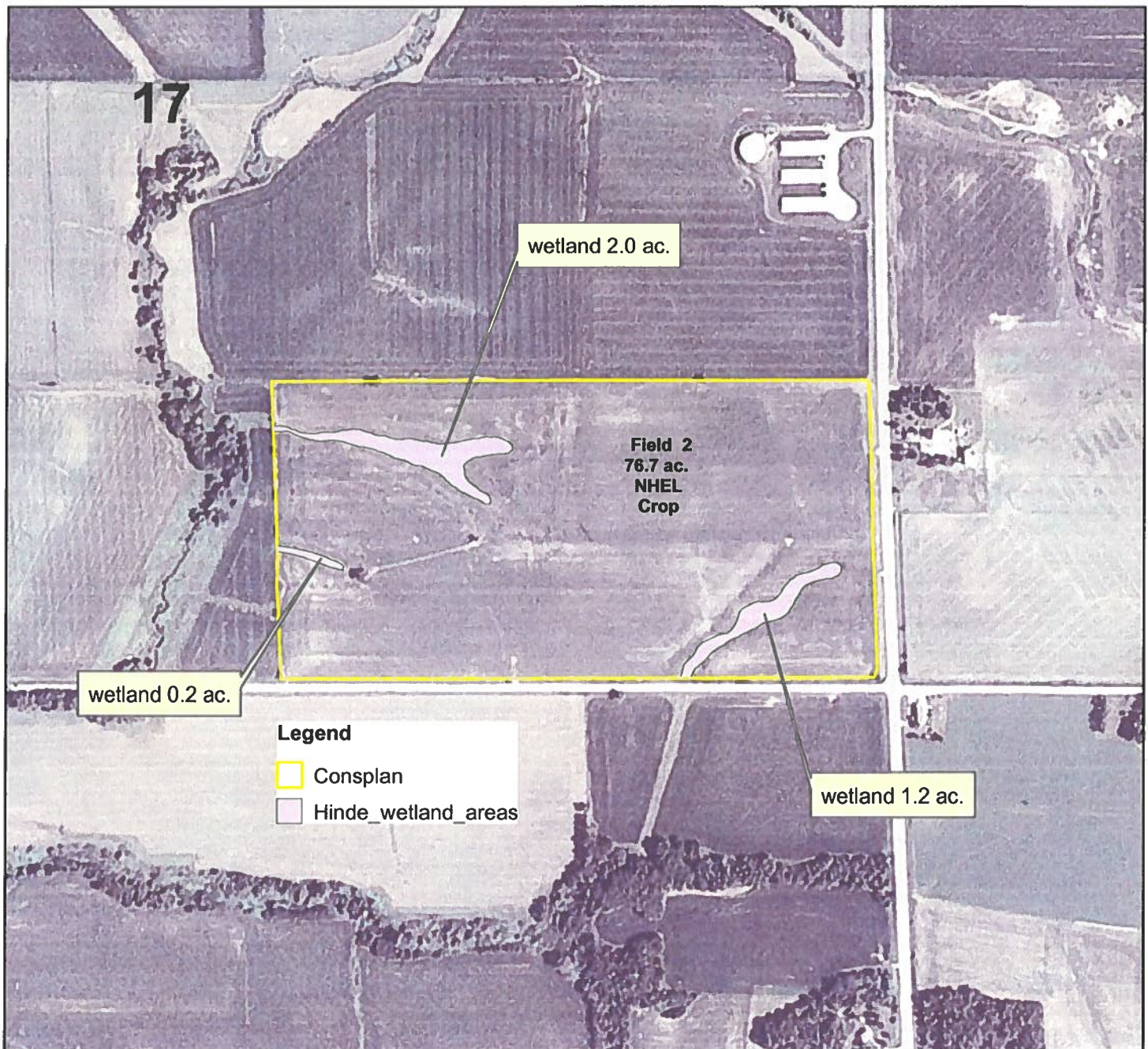
Customer(s): JANICE HINDE

Field Office: WATERLOO

Agency: NRCS

Legal Description: t9381 Sec. 17
Barclay Twp.

State and County: IA, BLACK HAWK



660 0 660 1,320
Feet



