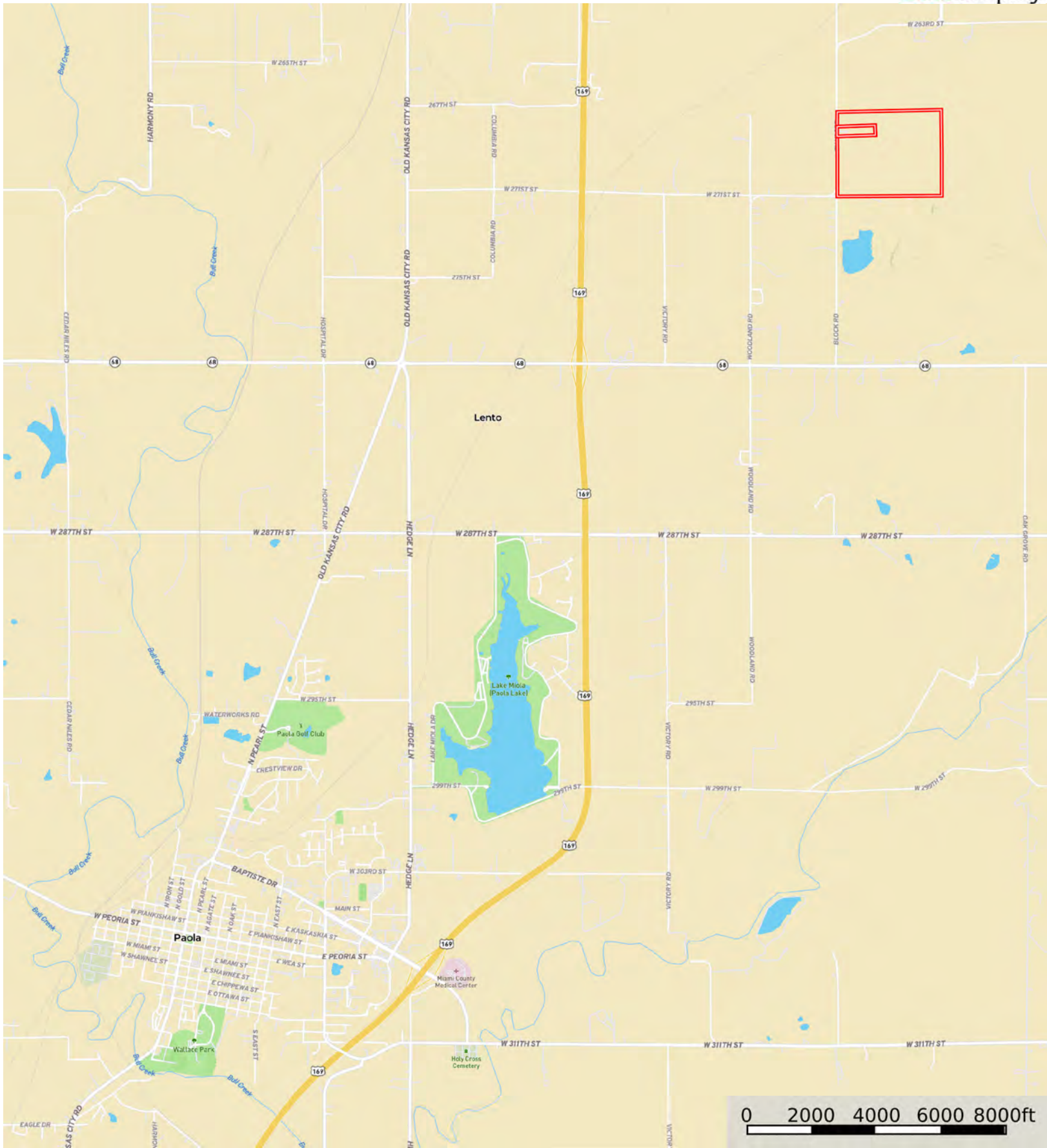


Howell Proposal

Miami County, Kansas, 196.19 AC +/-



Boundary



The information contained herein was obtained from sources deemed to be reliable. Land id™ Services makes no warranties or guarantees as to the completeness or accuracy thereof.



Boundary



Boundary

| Boundary 187.88 ac

SOIL CODE	SOIL DESCRIPTION	ACRES	%	CPI	NCCPI	CAP
8632	Bucyrus silty clay loam, 3 to 8 percent slopes	59.74	31.8	0	76	3e
8631	Bucyrus silty clay loam, 1 to 3 percent slopes	59.15	31.48	0	77	2e
8735	Eram silty clay loam, 3 to 7 percent slopes	27.65	14.72	0	58	4e
8663	Clareson-Rock outcrop complex, 3 to 15 percent slopes	25.0	13.31	0	30	6e
7251	Grundy silt loam, 1 to 3 percent slopes	13.02	6.93	0	71	2e
9983	Pits, gravel and quarry	2.37	1.26	0	-	8
8733	Eram silty clay loam, 1 to 3 percent slopes	0.72	0.38	0	53	3e
8911	Summit silty clay loam, 1 to 3 percent slopes	0.23	0.12	0	62	2e
TOTALS		187.8 8(*)	100%	-	66.13	3.22

(*) Total acres may differ in the second decimal compared to the sum of each acreage soil. This is due to a round error because we only show the acres of each soil with two decimal.





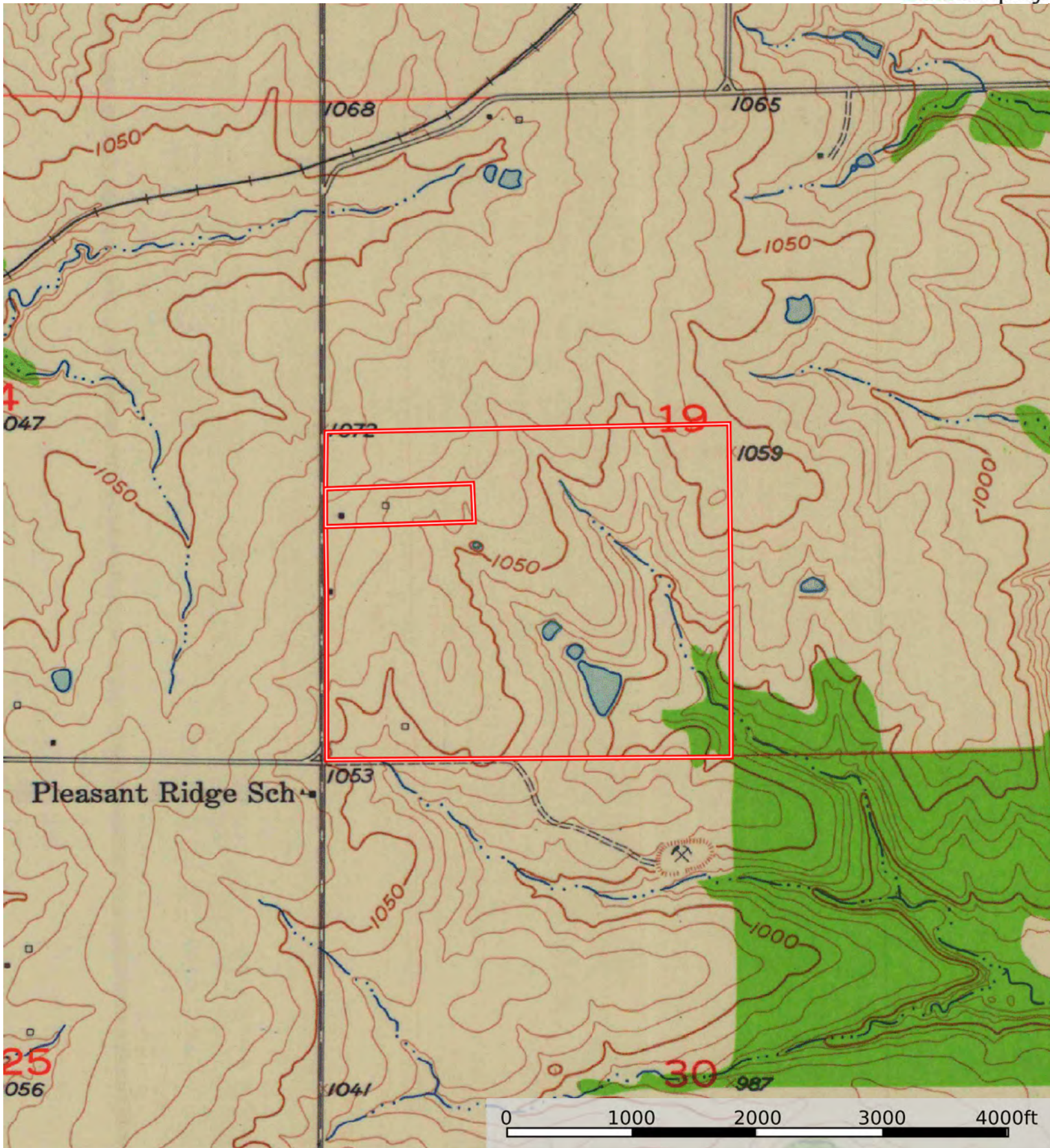
Boundary

| Boundary 8.27 ac

SOIL CODE	SOIL DESCRIPTION	ACRES	%	CPI	NCCPI	CAP
8631	Bucyrus silty clay loam, 1 to 3 percent slopes	5.02	60.7	0	77	2e
8632	Bucyrus silty clay loam, 3 to 8 percent slopes	3.25	39.3	0	76	3e
TOTALS		8.27(*)	100%	-	76.61	2.39

(*) Total acres may differ in the second decimal compared to the sum of each acreage soil. This is due to a round error because we only show the acres of each soil with two decimal.

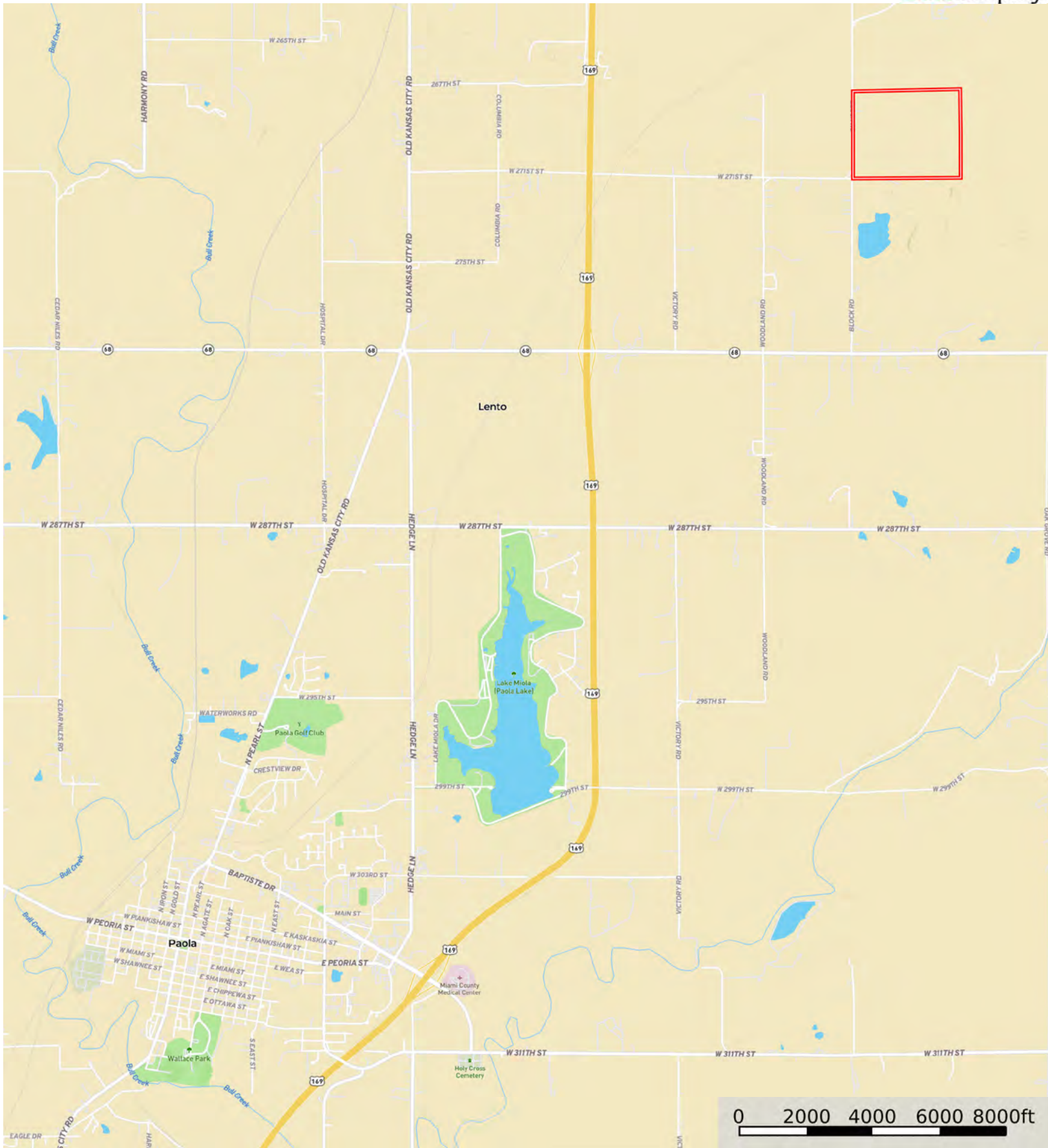




Boundary

Howell Proposal

Miami County, Kansas, 196.19 AC +/-



Boundary



The information contained herein was obtained from sources deemed to be reliable. Land id™ Services makes no warranties or guarantees as to the completeness or accuracy thereof.



Boundary



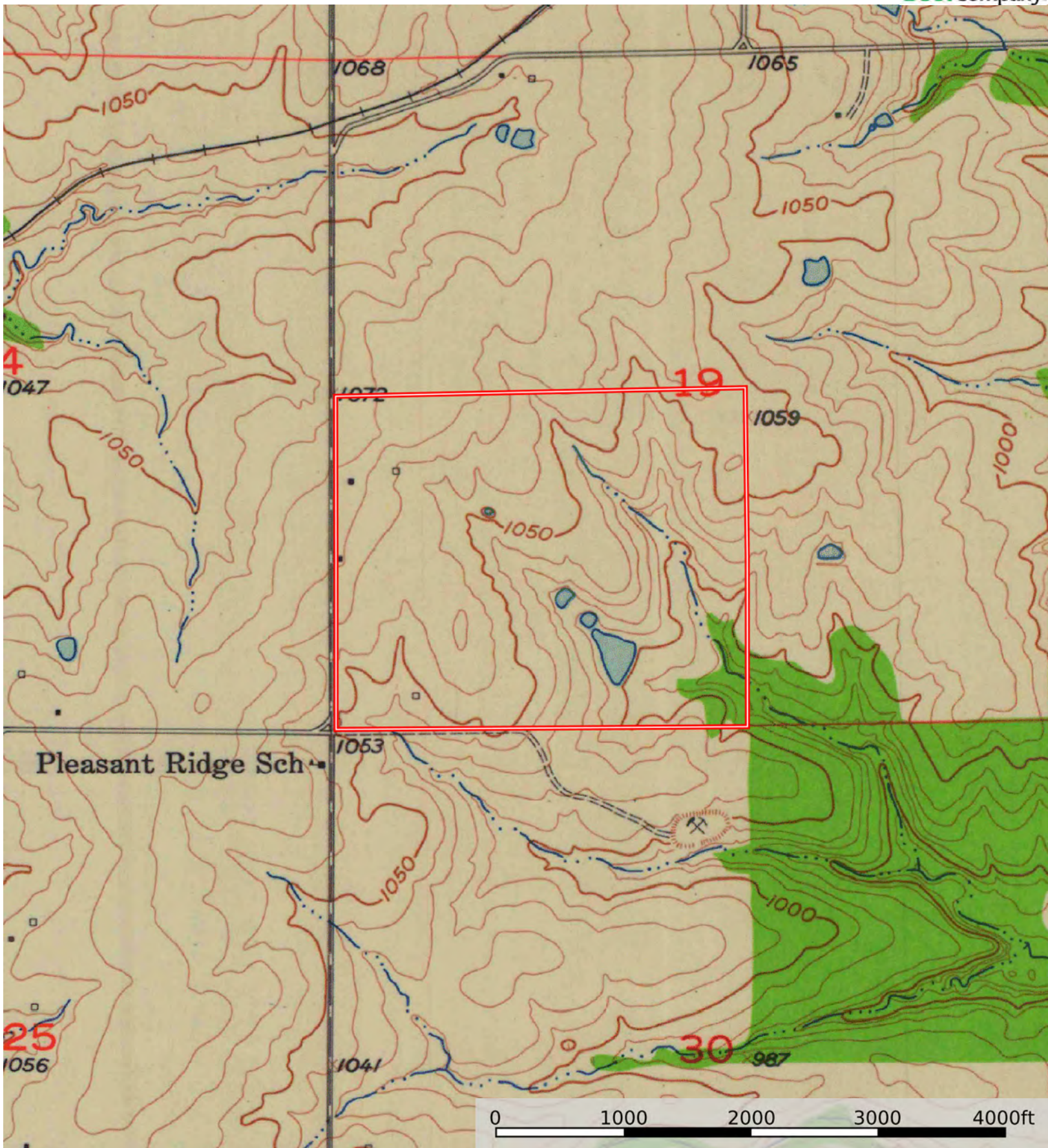
Boundary

| Boundary 196.04 ac

SOIL CODE	SOIL DESCRIPTION	ACRES	%	CPI	NCCPI	CAP
8631	Bucyrus silty clay loam, 1 to 3 percent slopes	64.08	32.69	0	77	2e
8632	Bucyrus silty clay loam, 3 to 8 percent slopes	62.98	32.12	0	76	3e
8735	Eram silty clay loam, 3 to 7 percent slopes	27.65	14.1	0	58	4e
8663	Clareson-Rock outcrop complex, 3 to 15 percent slopes	25.0	12.75	0	30	6e
7251	Grundy silt loam, 1 to 3 percent slopes	13.02	6.64	0	71	2e
9983	Pits, gravel and quarry	2.37	1.21	0	-	8
8733	Eram silty clay loam, 1 to 3 percent slopes	0.72	0.37	0	53	3e
8911	Summit silty clay loam, 1 to 3 percent slopes	0.22	0.11	0	62	2e
TOTALS		196.0 4(*)	100%	-	66.57	3.19

(*) Total acres may differ in the second decimal compared to the sum of each acreage soil. This is due to a round error because we only show the acres of each soil with two decimal.





Boundary