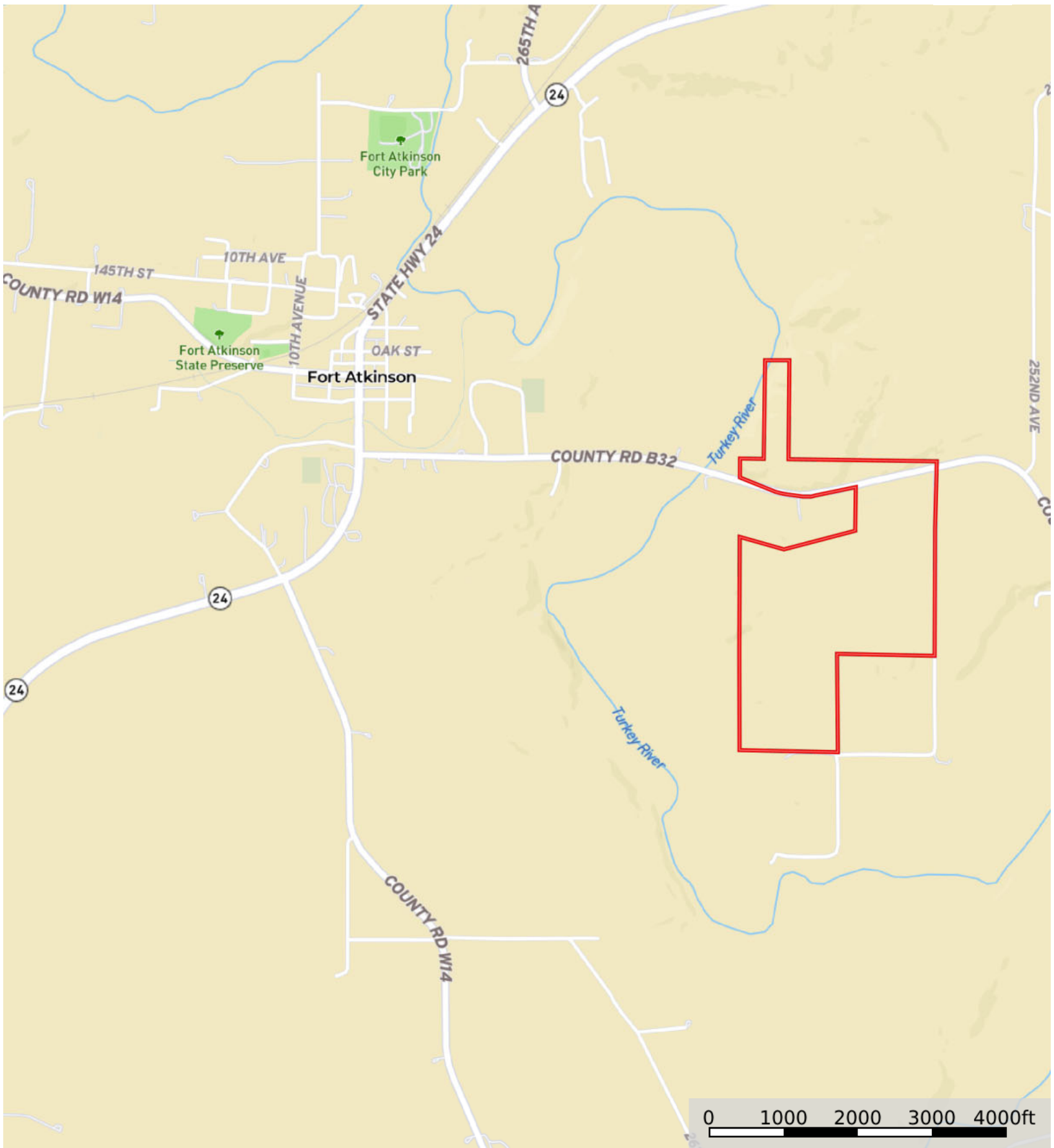



# Ida Ameling

Winneshiek County, Iowa, 203.52 AC +/-

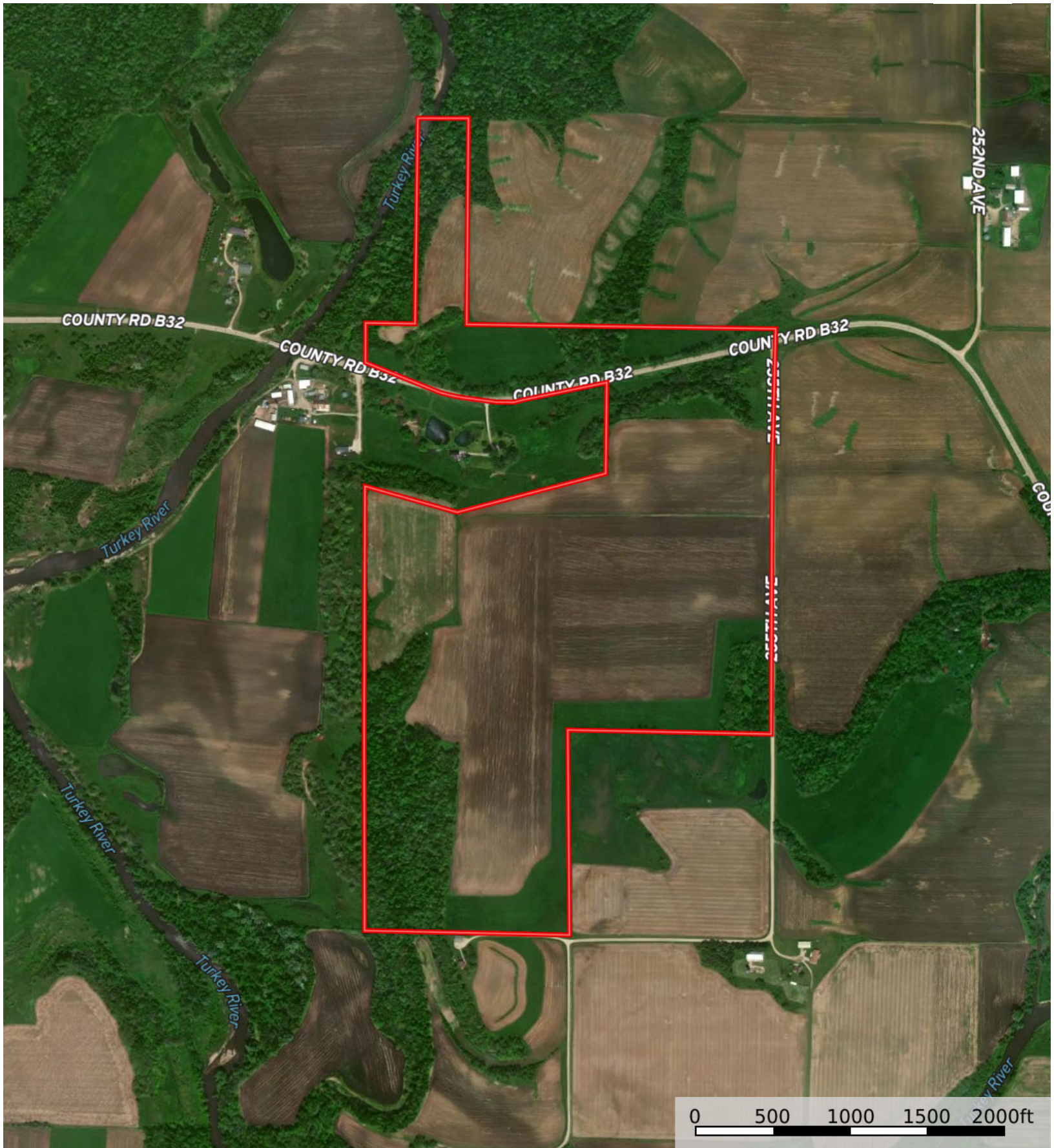



 Boundary

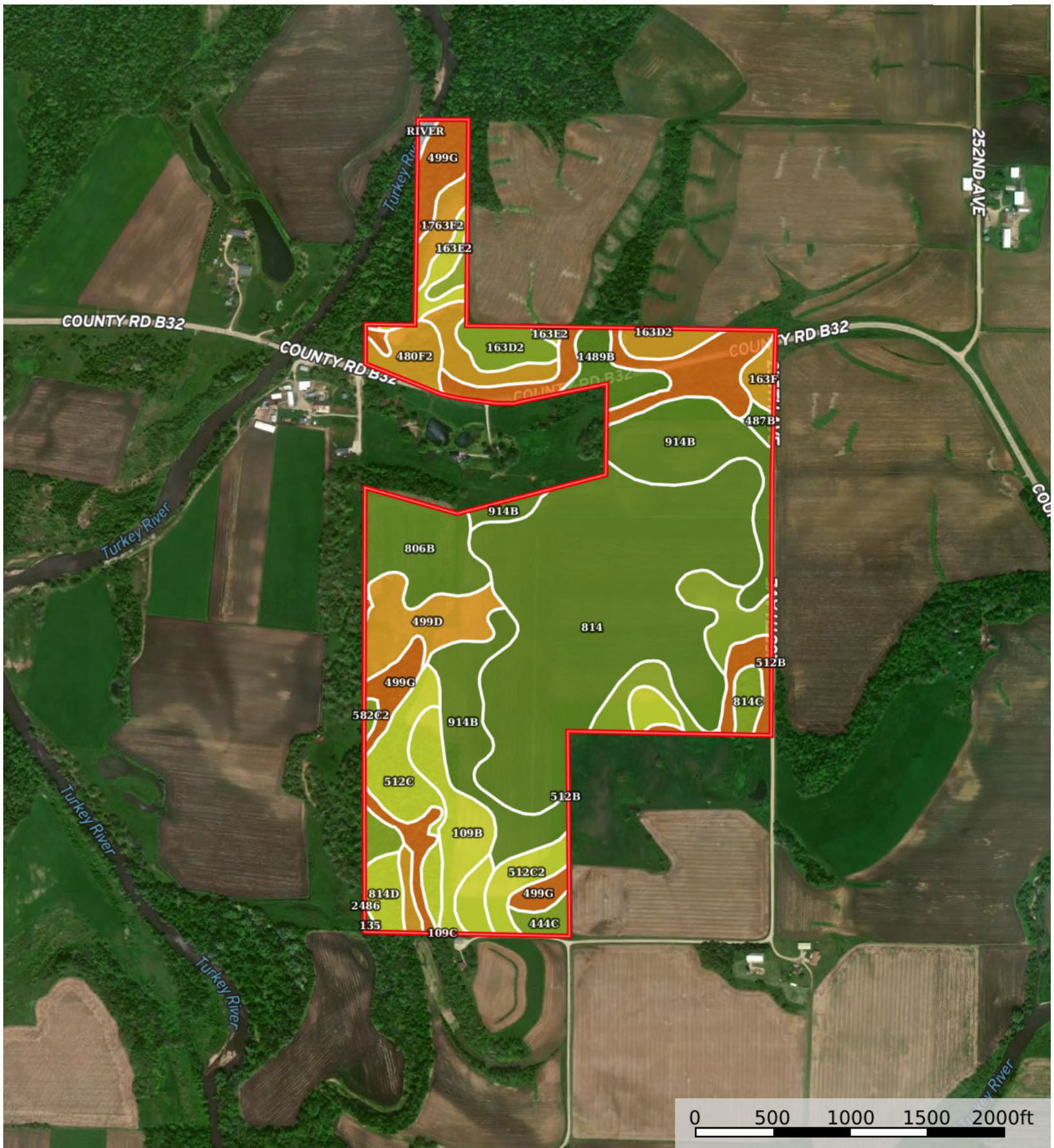



The information contained herein was obtained from sources deemed to be reliable. Land id™ Services makes no warranties or guarantees as to the completeness or accuracy thereof.

Ida Ameling  
Winneshiek County, Iowa, 203.52 AC +/-



 Boundary



 Boundary

Boundary 184.95 ac

SOIL CODE	SOIL DESCRIPTION	ACRES	%	CSR2	CPI	NCCPI	CAP
814	Rockton loam, 0 to 2 percent slopes	58.24	31.49	55.0	0	64	2e
914B	Winneshiek loam, 2 to 5 percent slopes	23.85	12.89	38.0	0	60	2e
499G	Nordness silt loam, 14 to 40 percent slopes	23.71	12.82	5.0	0	11	7s
806B	Whalan silt loam, 2 to 5 percent slopes	9.6	5.19	39.0	0	60	2e
499D	Nordness silt loam, 5 to 14 percent slopes	7.57	4.09	14.0	0	45	6s
512C	Marlean loam, 5 to 9 percent slopes	7.37	3.98	54.0	0	63	4e
512B	Marlean loam, 2 to 5 percent slopes	7.26	3.93	62.0	0	68	3e
109B	Backbone sandy loam, 2 to 5 percent slopes	6.76	3.65	35.0	0	59	4s
1763F2	Fayette-Exette complex, 18 to 25 percent slopes, moderately eroded	5.92	3.2	26.0	0	58	6e
512C2	Marlean loam, 5 to 9 percent slopes, moderately eroded	4.98	2.69	52.0	0	59	4e
163D2	Fayette silt loam, 9 to 14 percent slopes, moderately eroded	4.41	2.38	46.0	0	81	3e
1489B	Lawson-Ossian complex, 0 to 4 percent slopes	3.77	2.04	77.0	0	74	2w
163F	Fayette silt loam, 18 to 25 percent slopes	3.7	2.0	21.0	0	64	6e
480F2	Orwood silt loam, 18 to 25 percent slopes, moderately eroded	3.44	1.86	24.0	0	66	6e
814D	Rockton loam, 9 to 14 percent slopes	2.51	1.36	23.0	0	60	4e
163E2	Fayette silt loam, 14 to 18 percent slopes, moderately eroded	2.48	1.34	35.0	0	77	4e
109C	Backbone sandy loam, 5 to 9 percent slopes	1.95	1.05	37.0	0	59	4s
582C2	Kasson loam, 5 to 9 percent slopes, eroded	1.76	0.95	66.0	0	74	3e
814C	Rockton loam, 5 to 9 percent slopes	1.63	0.88	47.0	0	63	3e
444C	Jacwin loam, 5 to 9 percent slopes	1.57	0.85	56.0	0	59	3e
285F	Burkhardt loam, 14 to 25 percent slopes	1.07	0.58	10.0	0	35	6s
487B	Otter-Worthen complex, 1 to 4 percent slopes	0.8	0.43	79.0	0	82	2w
RIVER	Water, rivers and streams	0.38	0.21	-	0	-	-
135	Coland clay loam, 0 to 2 percent slopes, occasionally flooded	0.2	0.11	65.0	0	88	2w
2671	Ion-Eitzen complex, 0 to 2 percent slopes, occasionally flooded	0.01	0.01	76.0	0	74	2w
2486	Spillville, occasionally flooded-Waukee complex, 0 to 2 percent slopes	0.01	0.01	81.0	0	77	2w
TOTALS		184.95(*)	100%	40.25	-	55.87	3.48









(\*) Total acres may differ in the second decimal compared to the sum of each acreage soil. This is due to a round error because we only show the acres of each soil with two decimal.

## Capability Legend

Increased Limitations and Hazards

Decreased Adaptability and Freedom of Choice Users

Land, Capability

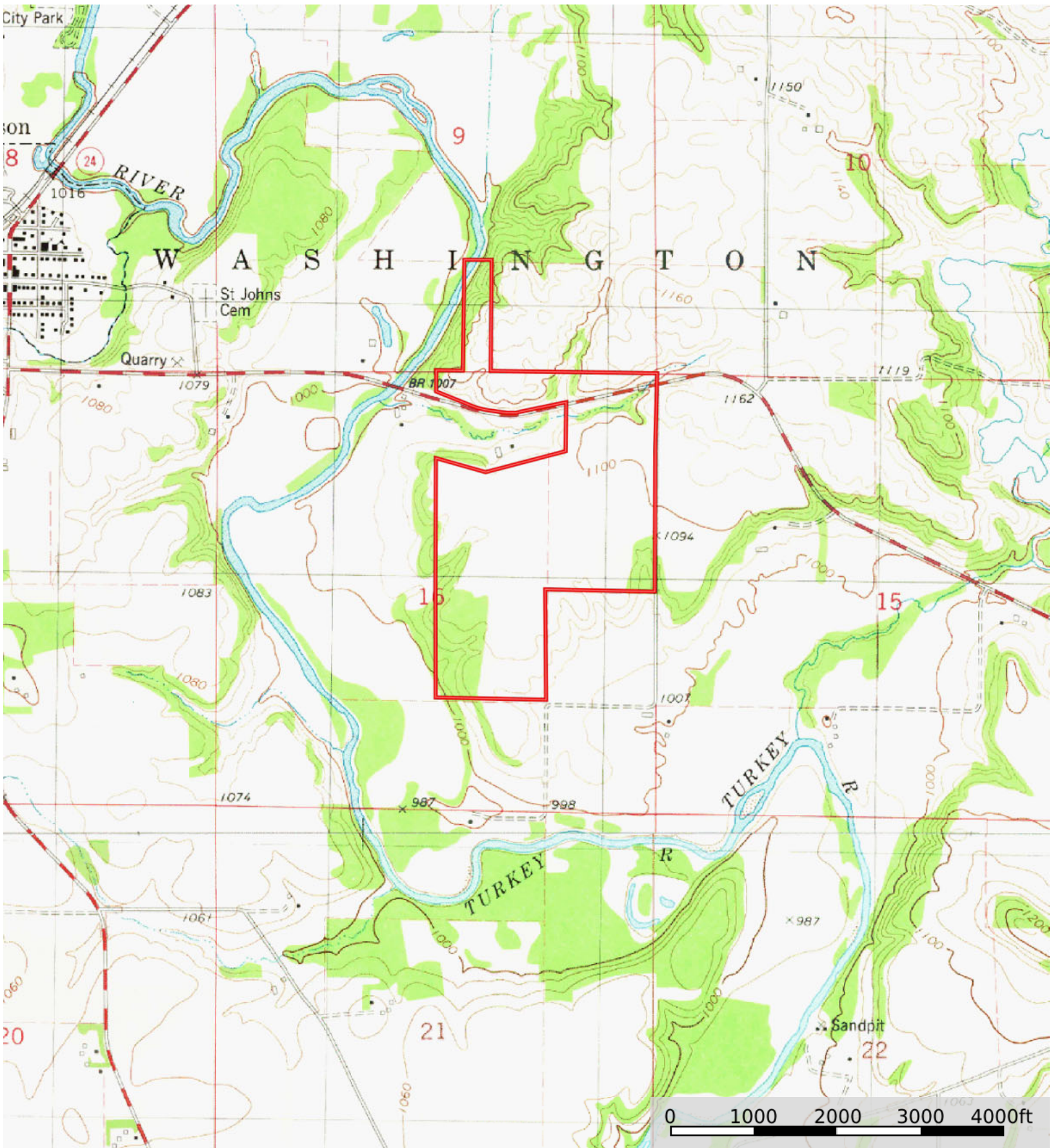
								
	1	2	3	4	5	6	7	8
'Wild Life'	•	•	•	•	•	•	•	•
Forestry	•	•	•	•	•	•	•	
Limited	•	•	•	•	•	•	•	
Moderate	•	•	•	•	•	•		
Intense	•	•	•	•	•			
Limited	•	•	•	•				
Moderate	•	•	•					
Intense	•	•						
Very Intense	•							


### Grazing Cultivation

(c) climatic limitations (e) susceptibility to erosion

(s) soil limitations within the rooting zone (w) excess of water

**Ida Ameling**  
Winneshiiek County, Iowa, 203.52 AC +/-



 Boundary