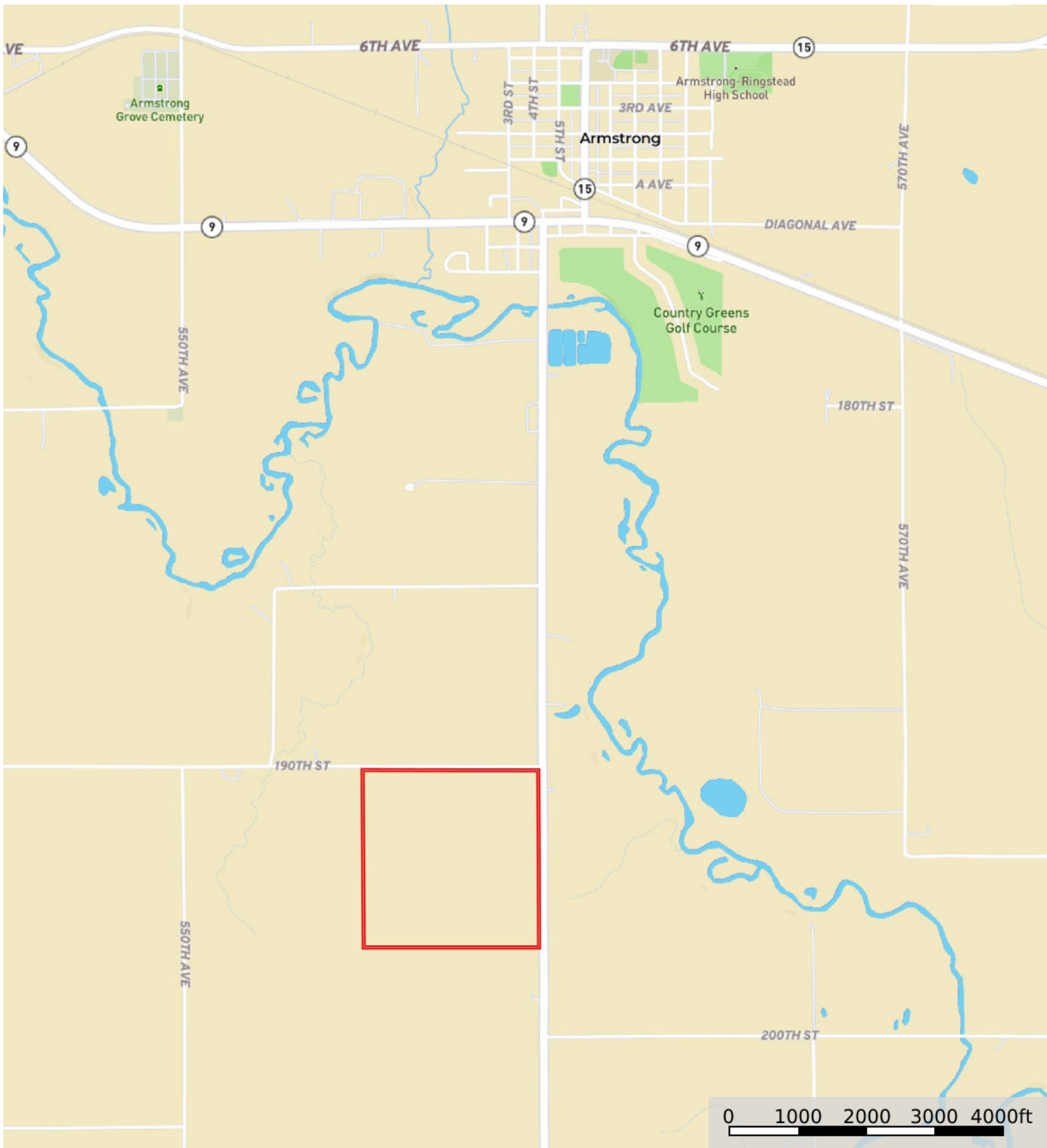
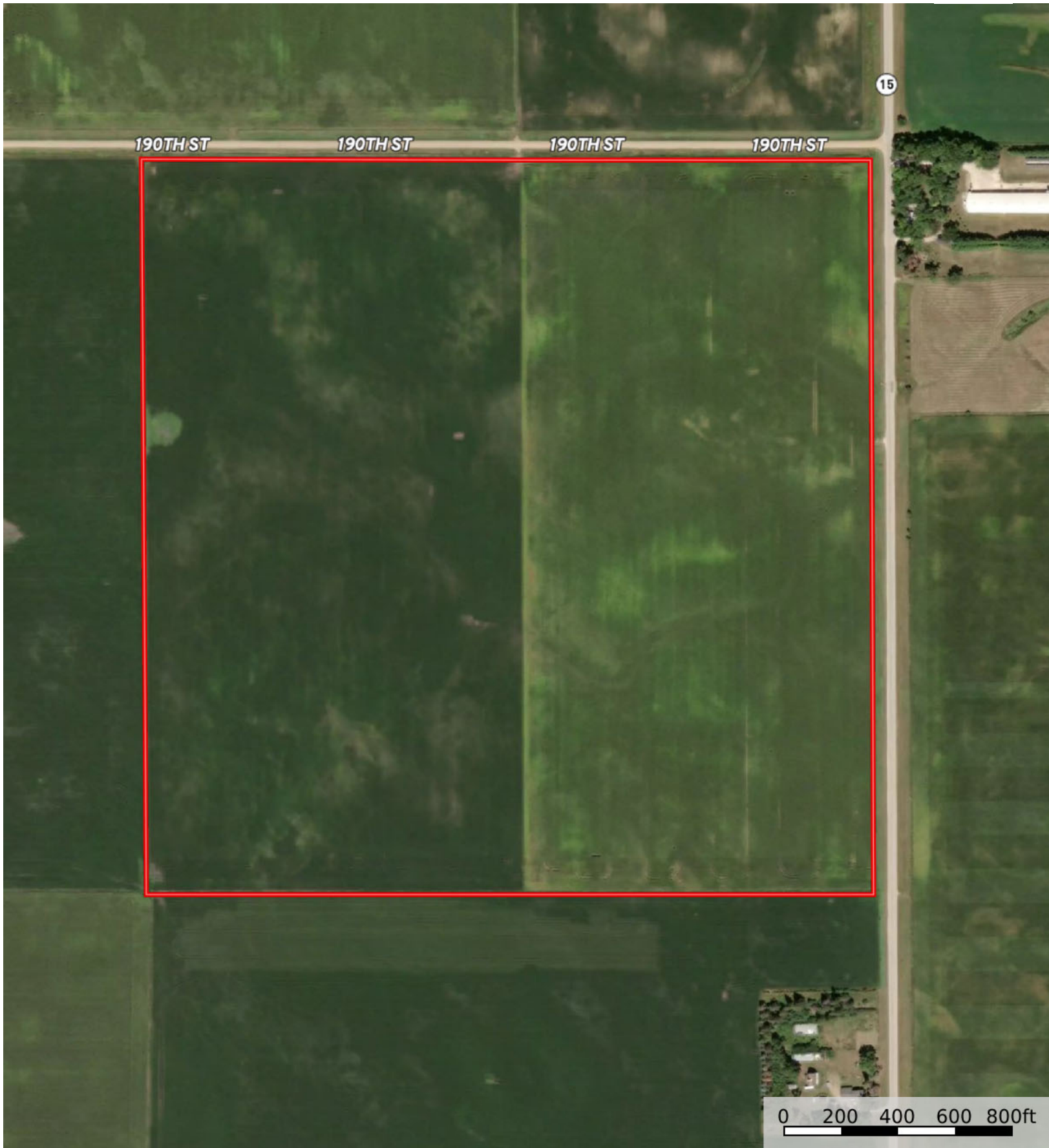


John Thorson
Emmet County, Iowa, 153.83 AC +/-



 Boundary



190TH ST

190TH ST

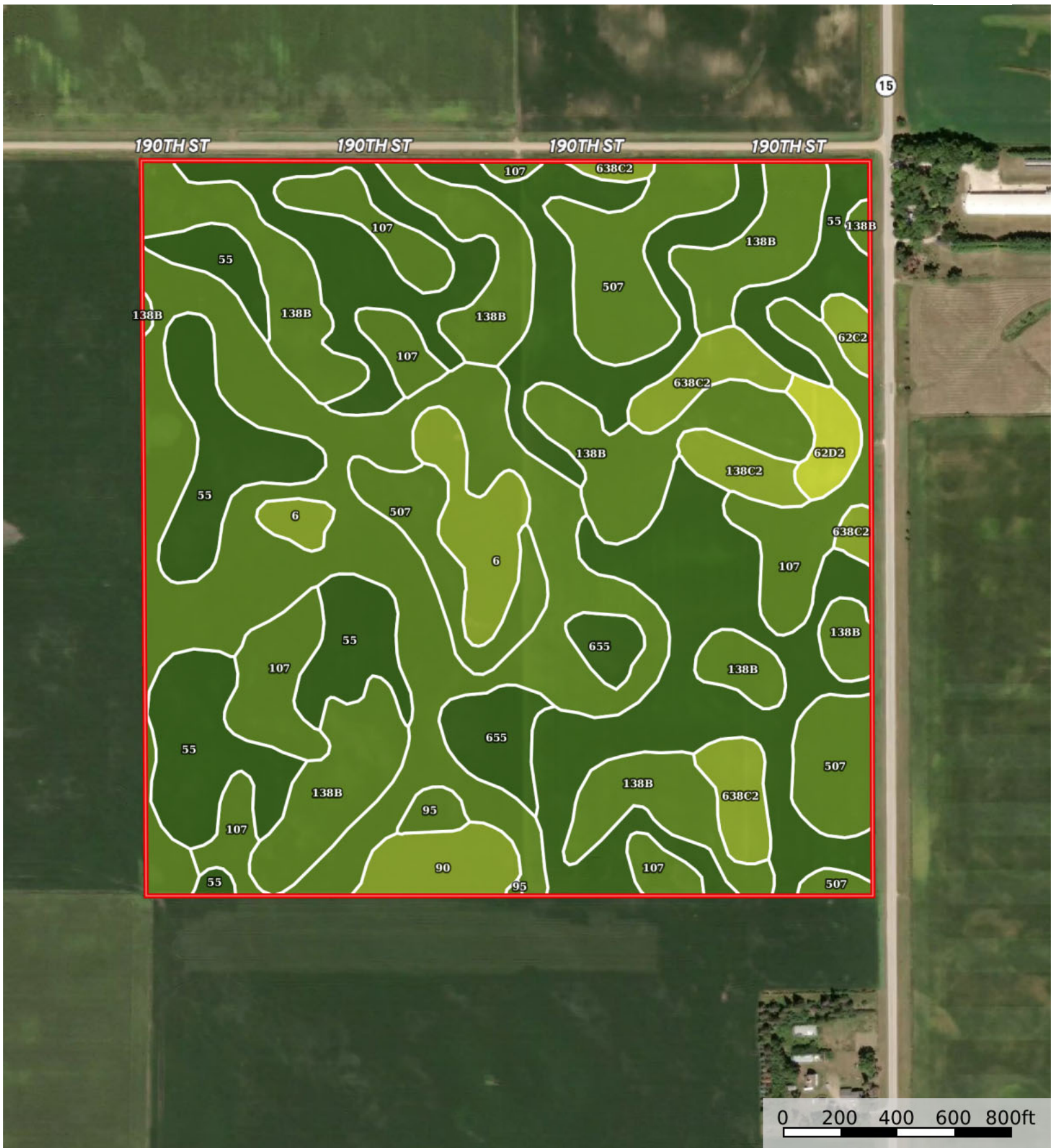
190TH ST


190TH ST

15

0 200 400 600 800ft

 Boundary



 Boundary

|  Boundary 152.52 ac

SOIL CODE	SOIL DESCRIPTION	ACRES	%	CSR2	CPI	NCCPI	CAP
55	Nicollet clay loam, 1 to 3 percent slopes	50.12	32.86	89.0	0	81	1
507	Canisteo clay loam, 0 to 2 percent slopes	37.61	24.66	84.0	0	82	2w
138B	Clarion loam, 2 to 6 percent slopes	28.0	18.36	89.0	0	83	2e
107	Webster clay loam, 0 to 2 percent slopes	13.03	8.54	86.0	0	83	2w
638C2	Clarion-Storden complex, 6 to 10 percent slopes, moderately eroded	4.77	3.13	75.0	0	68	3e
6	Okoboji silty clay loam, 0 to 1 percent slopes	4.47	2.93	59.0	0	75	3w
95	Harps clay loam, 0 to 2 percent slopes	4.29	2.81	72.0	0	82	2w
655	Crippin loam, 1 to 3 percent slopes	3.56	2.33	91.0	0	87	1
90	Okoboji mucky silt loam, 0 to 1 percent slopes	2.72	1.78	55.0	0	69	3w
138C2	Clarion loam, 6 to 10 percent slopes, moderately eroded	1.62	1.06	83.0	0	69	3e
62D2	Storden loam, 10 to 16 percent slopes, moderately eroded	1.59	1.04	41.0	0	64	4e
62C2	Storden loam, 6 to 10 percent slopes, moderately eroded	0.74	0.49	64.0	0	68	3e
TOTALS		152.52(*)	100%	84.48	-	80.79	1.76









(*) Total acres may differ in the second decimal compared to the sum of each acreage soil. This is due to a round error because we only show the acres of each soil with two decimal.

Capability Legend

Increased Limitations and Hazards

Decreased Adaptability and Freedom of Choice Users

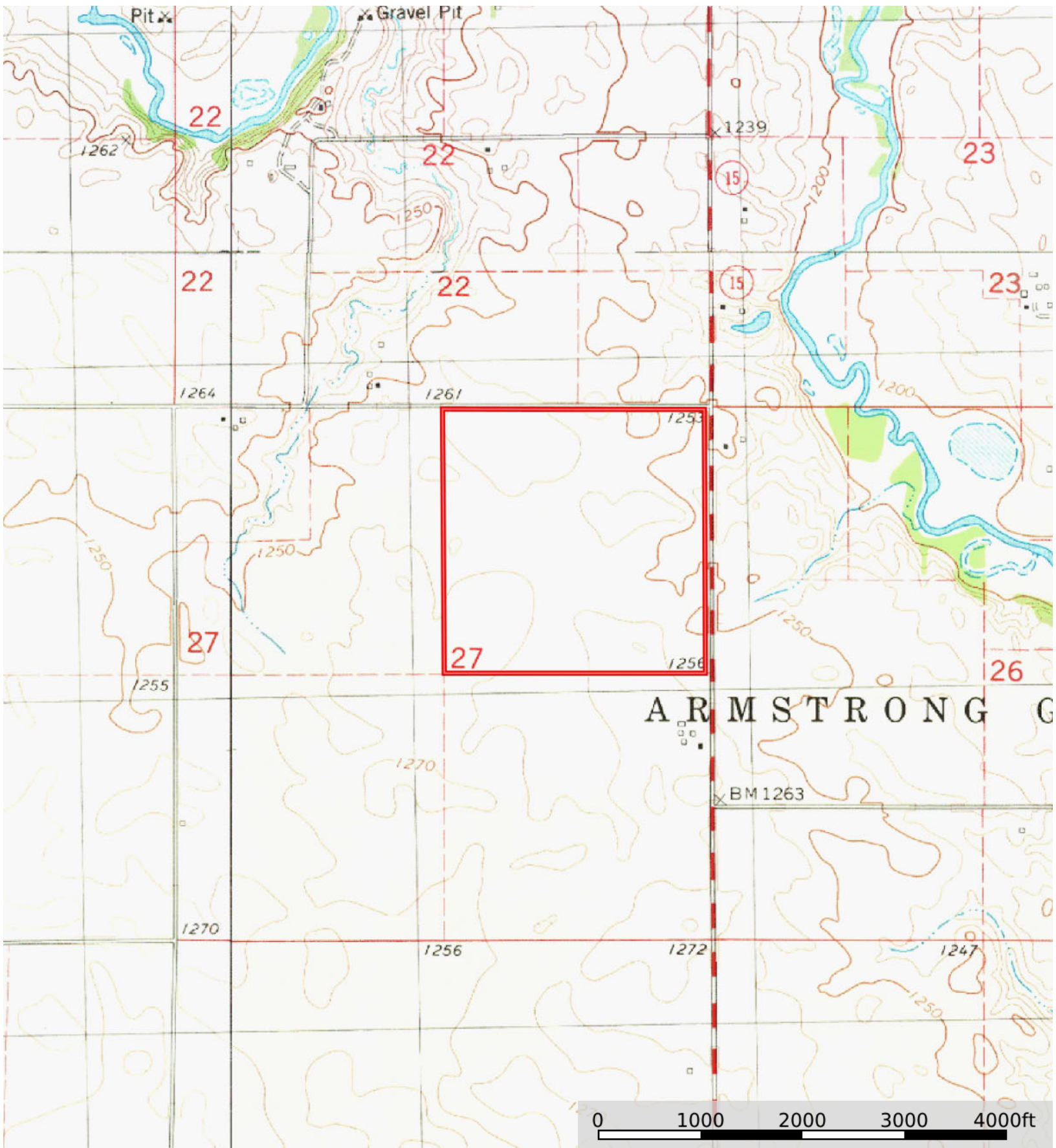
Land, Capability


								
	1	2	3	4	5	6	7	8
'Wild Life'	•	•	•	•	•	•	•	•
Forestry	•	•	•	•	•	•	•	
Limited	•	•	•	•	•	•	•	
Moderate	•	•	•	•	•	•		
Intense	•	•	•	•	•			
Limited	•	•	•	•				
Moderate	•	•	•					
Intense	•	•						
Very Intense	•							

Grazing Cultivation

(c) climatic limitations (e) susceptibility to erosion

(s) soil limitations within the rooting zone (w) excess of water



 Boundary