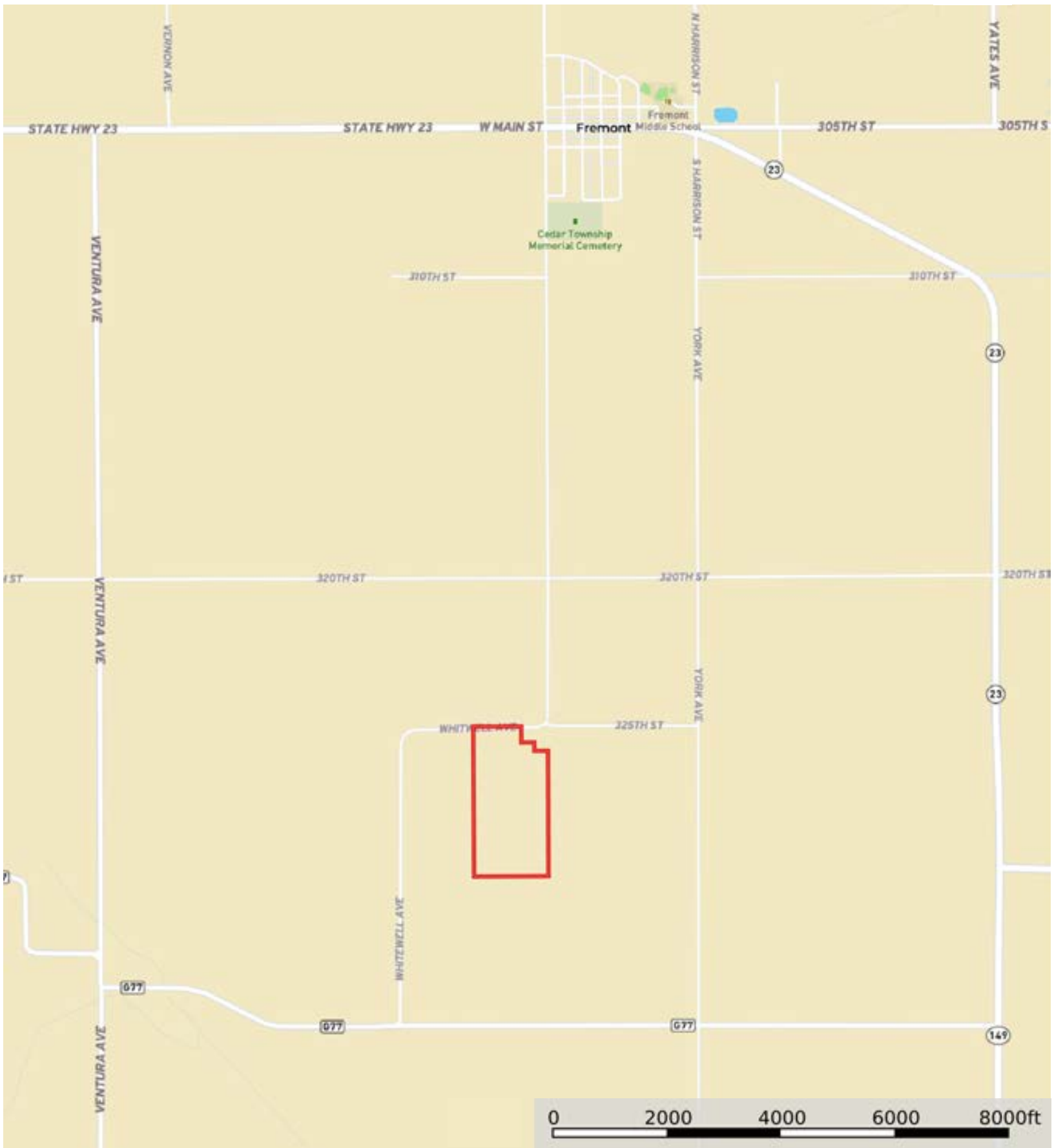


# Joy & Mark Rhinehart

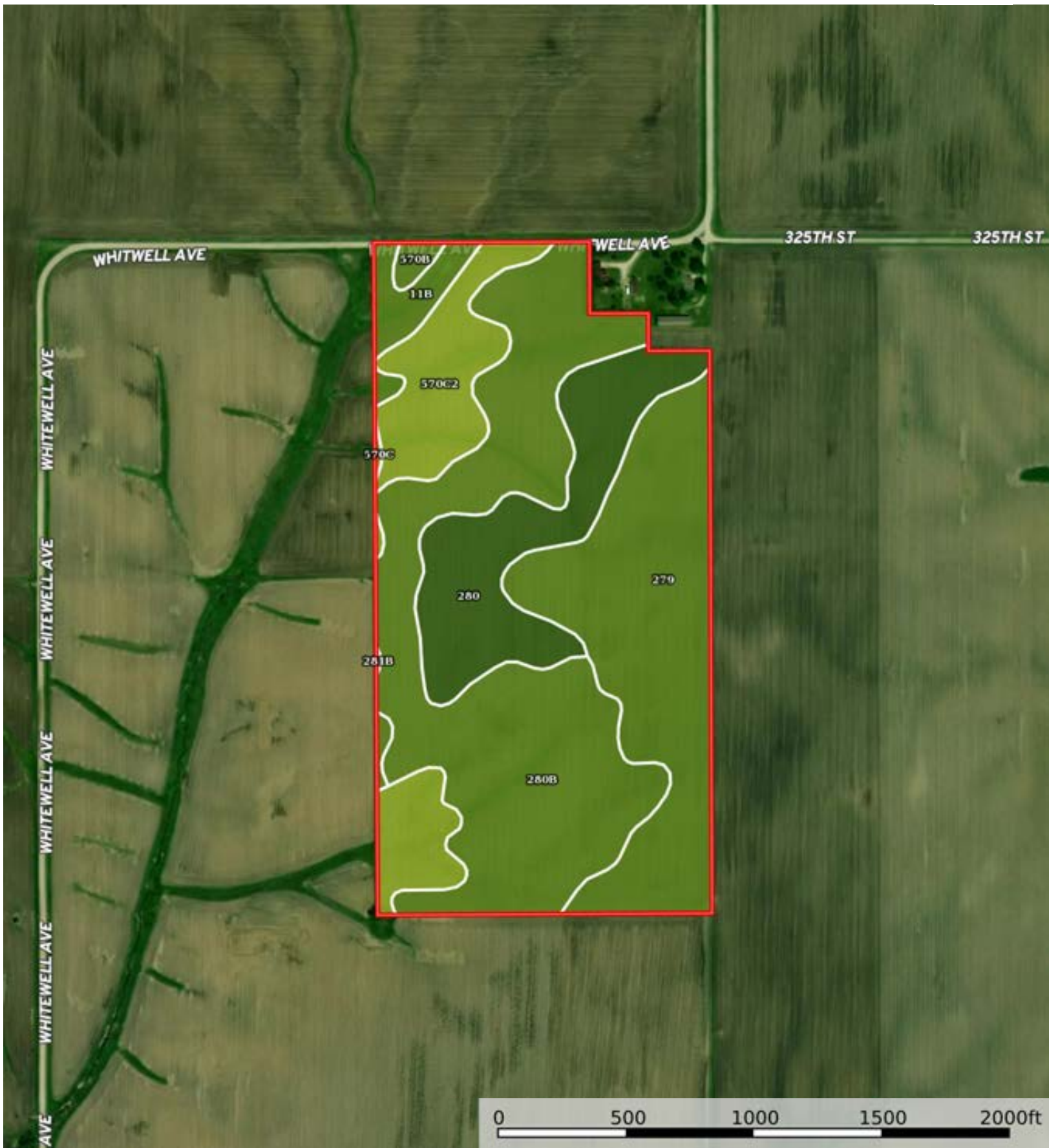
Mahaska County, Iowa, 75.49 AC +/-



 Boundary



 Boundary



 Boundary



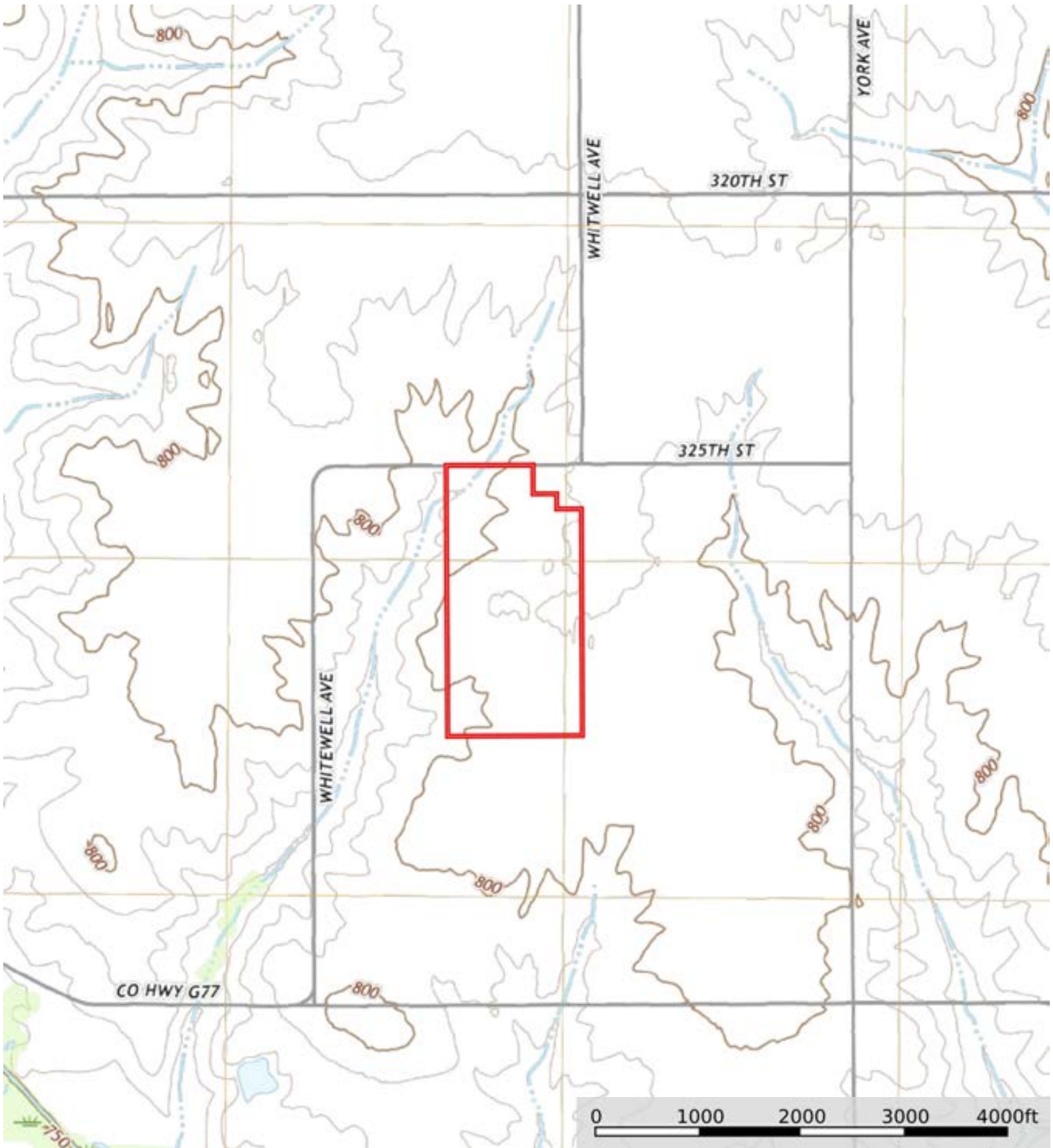
Boundary 75.85 ac

SOIL CODE	SOIL DESCRIPTION	ACRES	%	CSR2	CPI	NCCPI	CAP
280B	Mahaska silty clay loam, 2 to 5 percent slopes	30.1	39.69	89.0	0	86	2e
279	Taintor silty clay loam, 0 to 2 percent slopes	20.35	26.83	83.0	0	84	2w
280	Mahaska silty clay loam, 0 to 2 percent slopes	12.17	16.05	94.0	0	87	1
570C2	Nira silty clay loam, 5 to 9 percent slopes, moderately eroded	6.65	8.77	72.0	0	92	3e
570C	Nira silty clay loam, 5 to 9 percent slopes	3.42	4.51	76.0	0	97	3e
11B	Colo-Ely complex, 0 to 5 percent slopes	2.3	3.03	86.0	0	92	2w
570B	Nira silty clay loam, 2 to 5 percent slopes	0.55	0.73	81.0	0	98	2e
281B	Otley silty clay loam, 2 to 5 percent slopes	0.31	0.41	91.0	0	89	2e
TOTALS		75.85(*)	100%	85.99	-	86.94	1.97

(\*) Total acres may differ in the second decimal compared to the sum of each acreage soil. This is due to a round error because we only show the acres of each soil with two decimal.



Joy & Mark Rhinehart  
Mahaska County, Iowa, 75.49 AC +/-



Boundary