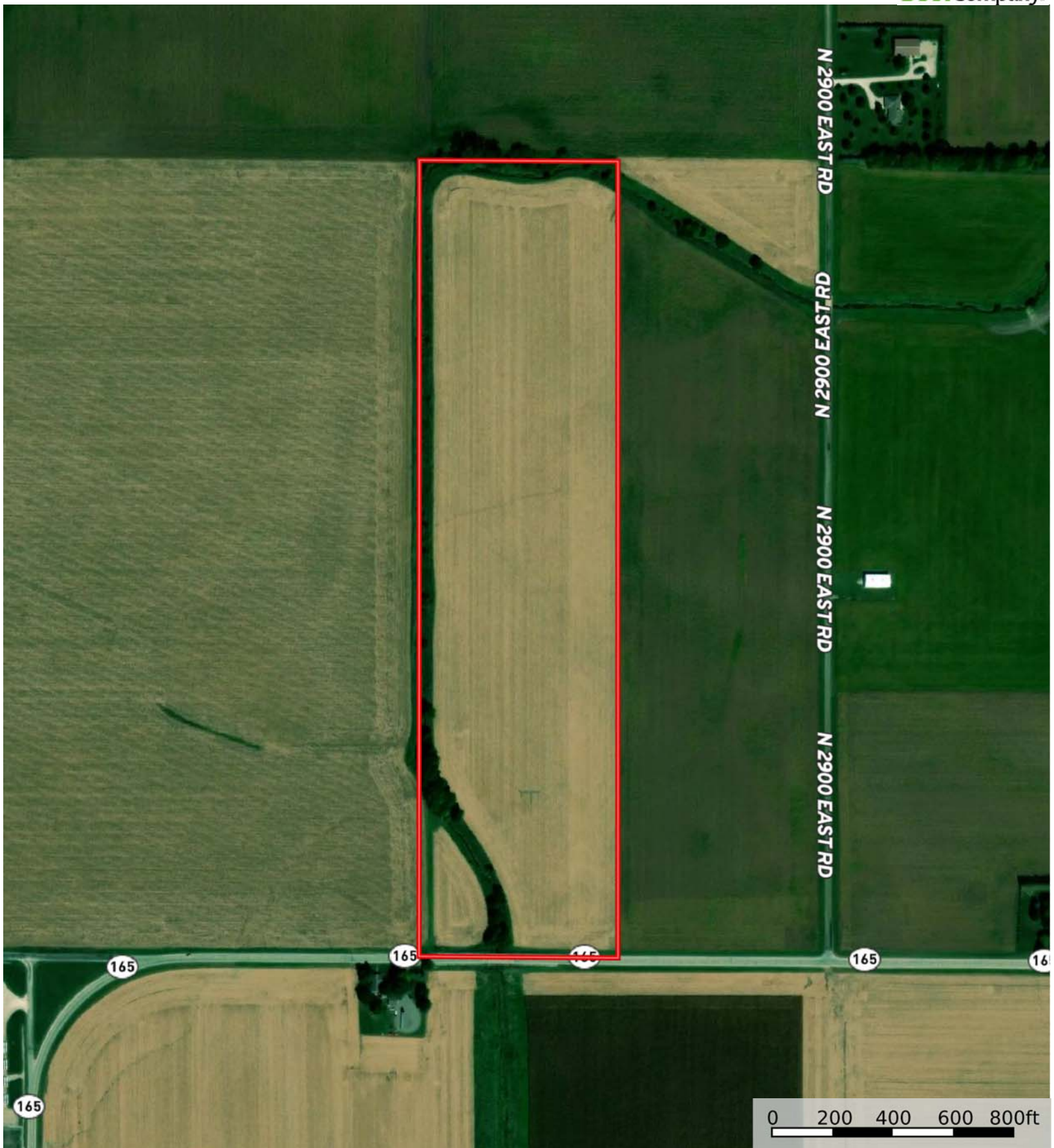




 Boundary



 Boundary



 Boundary

|  Boundary 39.96 ac

SOIL CODE	SOIL DESCRIPTION	ACRES	%	PI	NCCPI	CAP
622B2	Wyandot silt loam, 2 to 5 percent slopes, eroded	20.47	51.24	114	62	2e
721A	Drummer and Elpaso silty clay loams, 0 to 2 percent slopes	7.7	19.27	144	86	2w
145B2	Saybrook silt loam, 2 to 5 percent slopes, eroded	5.7	14.27	124	70	2e
149A	Brenton silt loam, 0 to 2 percent slopes	3.48	8.71	141	94	1
481A	Raub silt loam, non-densic substratum, 0 to 2 percent slopes	2.61	6.53	134	87	1
TOTALS		39.96(*)	100%	124.9	72.2	1.85









(*) Total acres may differ in the second decimal compared to the sum of each acreage soil. This is due to a round error because we only show the acres of each soil with two decimal.

Capability Legend

Increased Limitations and Hazards

Decreased Adaptability and Freedom of Choice Users

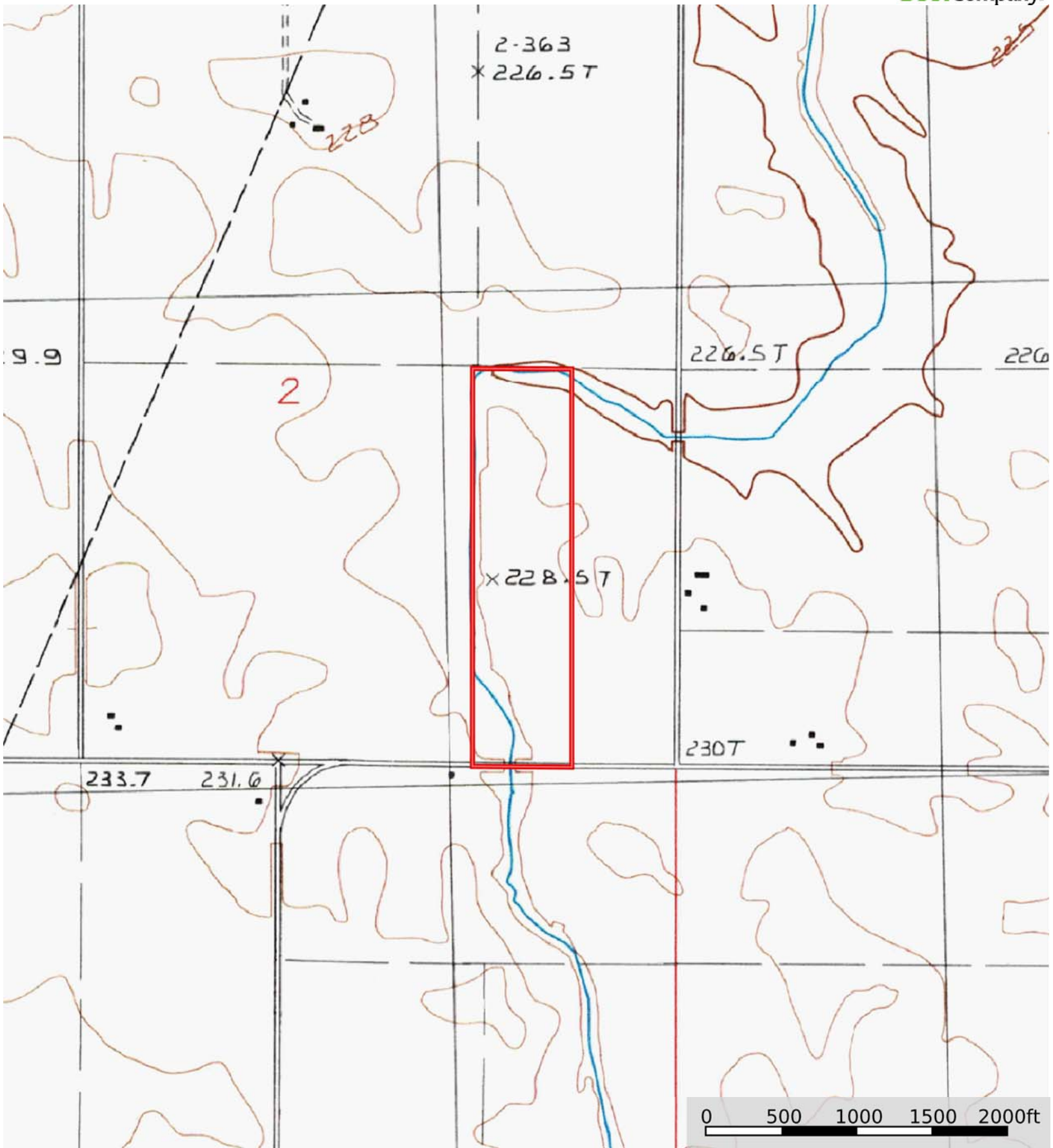
Land, Capability

								
	1	2	3	4	5	6	7	8
'Wild Life'	•	•	•	•	•	•	•	•
Forestry	•	•	•	•	•	•	•	
Limited	•	•	•	•	•	•	•	
Moderate	•	•	•	•	•	•		
Intense	•	•	•	•	•			
Limited	•	•	•	•				
Moderate	•	•	•					
Intense	•	•						
Very Intense	•							

Grazing Cultivation

(c) climatic limitations (e) susceptibility to erosion

(s) soil limitations within the rooting zone (w) excess of water



 Boundary